



Kane County

KC Agriculture Committee

Agenda

Government Center
719 S. Batavia Ave., Bldg. A
Geneva, IL 60134

JUBY, Roth, Allan, Lenert, Penesis, Sanchez, Williams and ex-officio Pierog (County Chair)

Thursday, September 18, 2025

10:30 AM

County Board Room

2025 Committee Goals

Goals from the July Agriculture Committee meeting

- Revise County Code Definition of the Agriculture Committee
 - Awareness & Support of Agriculture - Raise public awareness and support for agriculture in Kane County as an industry sector and community resource
 - Farmland Protection - Work in concert with the Farmland Protection Commission and County Board to oversee the successful implementation of Kane County's Farmland Protection Ordinance and related conservation efforts, and pursue funding
 - Continue Growing for Kane Program - Direct the implementation of programs and policies that expand the production of locally grown foods and improve community access to fresh and healthy food choices, and pursue funding
 - Continue partnerships with Kane County Farm Bureau and Northern Illinois Food Bank
 - Implement current grant funded projects
 - Continue to apply for additional outside grants
 - Implement economic development projects for Agriculture
 - ARPA Small grants for farmers
 - Other projects identified by the Economic Development Strategic Plan for Kane County
-

1. **Call To Order**
 2. **Roll Call**
 3. **Remote Attendance Requests**
 4. **Approval of Minutes: August 21, 2025**
 5. **Public Comment**
 6. **Partners**
 - A. Kane County Farm Bureau Updates (Steve Arnold, Manager)
 - B. Northern Illinois Food Bank Updates
 - C. Extension SNAP-Ed Program in Kane County (Deanna Roby, Director; Christine Birns, SNAP-Ed Educator)
 - D. Kane-DuPage Soil and Water Conservation District Updates (Isabella Borzeka, Senior Resource Analyst)
-

7. Presentations/Announcements

A. Growing for Kane Program Updates (Matt Tansley, Planner)

8. New Business**9. Reports Placed On File****10. Executive Session (if needed)****11. Adjournment**

STATE OF ILLINOIS)

SS.

COUNTY OF KANE)

PRESENTATION/DISCUSSION NO. TMP-25-1143

KANE COUNTY FARM BUREAU UPDATES (STEVE ARNOLD, MANAGER)

STATE OF ILLINOIS)

SS.

COUNTY OF KANE)

PRESENTATION/DISCUSSION NO. TMP-25-1144

NORTHERN ILLINOIS FOOD BANK UPDATES

STATE OF ILLINOIS)

SS.

COUNTY OF KANE)

PRESENTATION/DISCUSSION NO. TMP-25-1145

EXTENSION SNAP-ED PROGRAM IN KANE COUNTY (DEANNA ROBY, DIRECTOR; CHRISTINE BIRNS, SNAP-ED EDUCATOR)



SNAP -Ed: A Vital Investment in Illinois Families & Communities



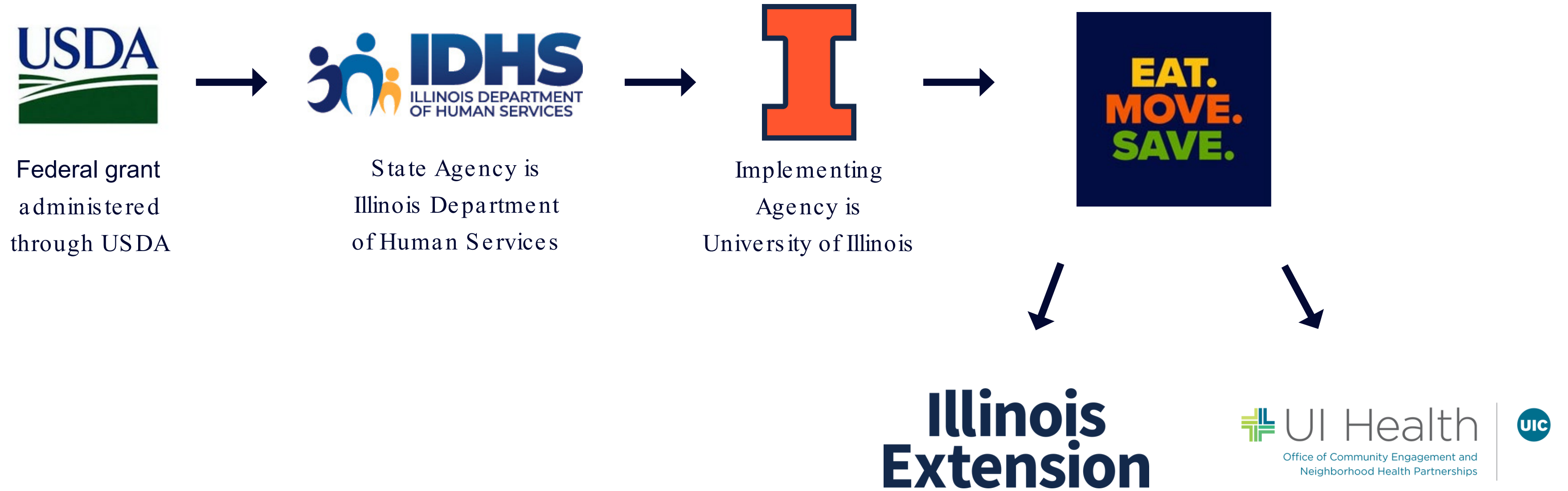
Illinois Extension
UNIVERSITY OF ILLINOIS URBANA-CHAMPAIGN



OFFICE OF COMMUNITY ENGAGEMENT AND
NEIGHBORHOOD HEALTH PARTNERSHIPS

SNAP -Ed Overview

EAT. MOVE. SAVE.



Comprehensive, Evidence -Based Public Health Approaches



Direct Education

Adults - Youth - Seniors - Families



Public Health Campaigns

Social Marketing, Find Food IL Map,
Eat.Move.Savesite and social media



Policy & Systems

Assessments, Technical Assistance,
Policy and Grant Writing Support

Hands -on Nutrition Education



**EAT.
MOVE.
SAVE.**



SNAP • LINK • WIC



FIND FOOD IN YOUR COMMUNITY



Food pantries & Meal sites



School & Summer Meal Sites



Grocery Stores



Farmers Markets



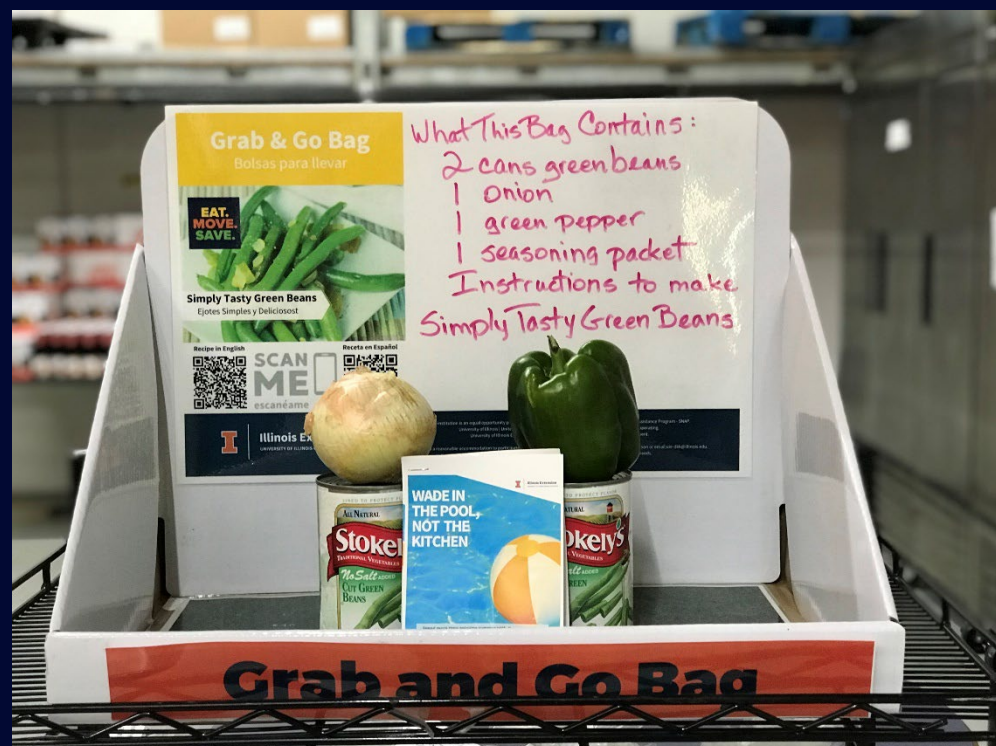
SNAP & WIC Offices



Older Adult Resources

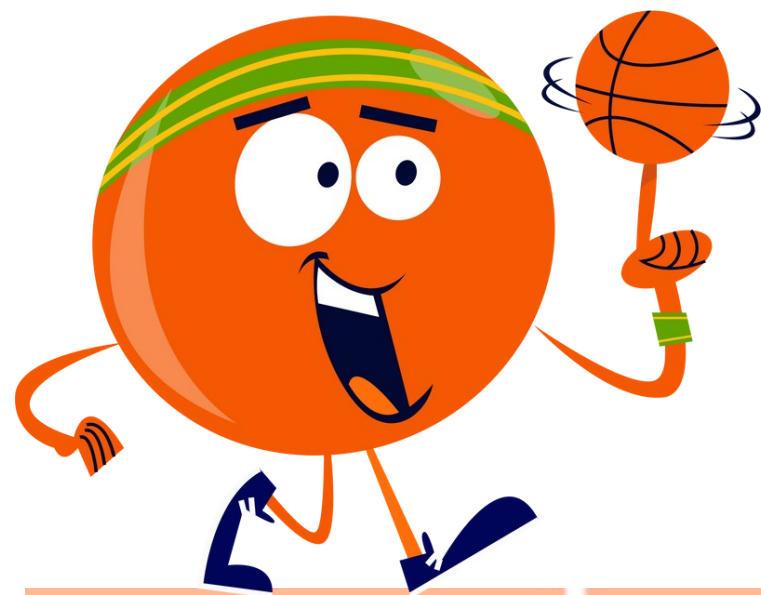
Policy, Systems, & Environmental Supports

- Training and Technical Assistance
- Infrastructure and Capacity Building
- Policy and Grant Writing Support



“We serve the most vulnerable families in our community. University of Illinois Extension helps our families try new fruits, vegetables, and recipes, and assisted them with budgeting and shopping. They understand the culture and needs of the families we serve.”

- Marie Wilkinson Food Pantry



COMMUNITY DRIVEN

Eat

Congregate meal sites
Senior nutrition centers
Fast food chains
Mobile vending
Food trucks
Restaurants
Soup kitchens
Other places people go to eat outside the home

Learn

Before/after school programs
Early care/education facilities (Head Start, etc)
Schools (K-12)
Schools (college/univ.)
Extension offices
Family resource centers
Libraries
WIC clinics
Mobile education sites
Other places people go to learn

Live

Community orgs.
Emergency shelters/temp housing
Faith-based centers
Group living
Health clinics/hospitals
Individual Homes/Public housing
Residential treatment centers
other neighborhood settings where people live or live nearby

Play

Bike/walking paths
Community/Rec Centers
Gardens
Parks/Open spaces
State/County fairgrounds
Youth organizations
Other places people go to play

Shop

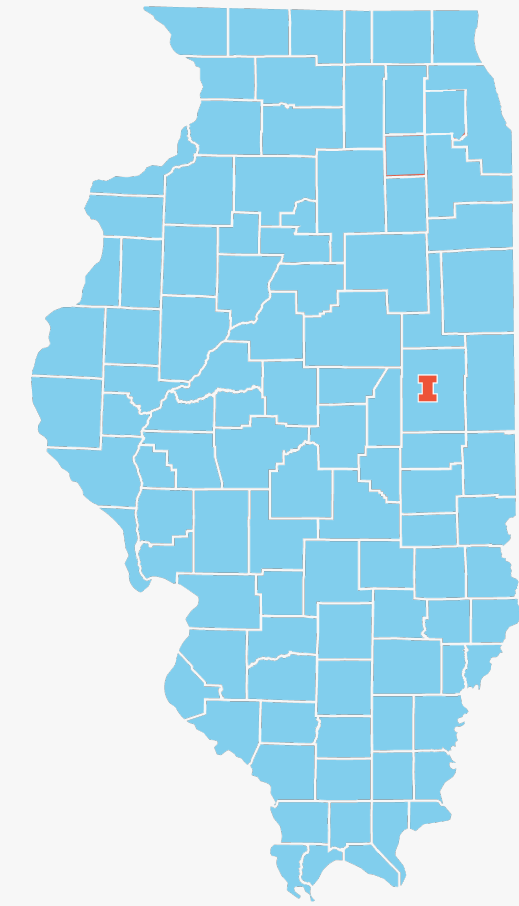
Farmers markets
Food assistance sites, pantries, banks, etc.
Large food stores/retail
Small food stores/retails (3 or less registers)
Other places people go to shop for or access food to prepare at home

Work

Adult education, job training, TANF, veteran service sites
SNAP offices
Worksites with low-wage workers
Other places people go to work

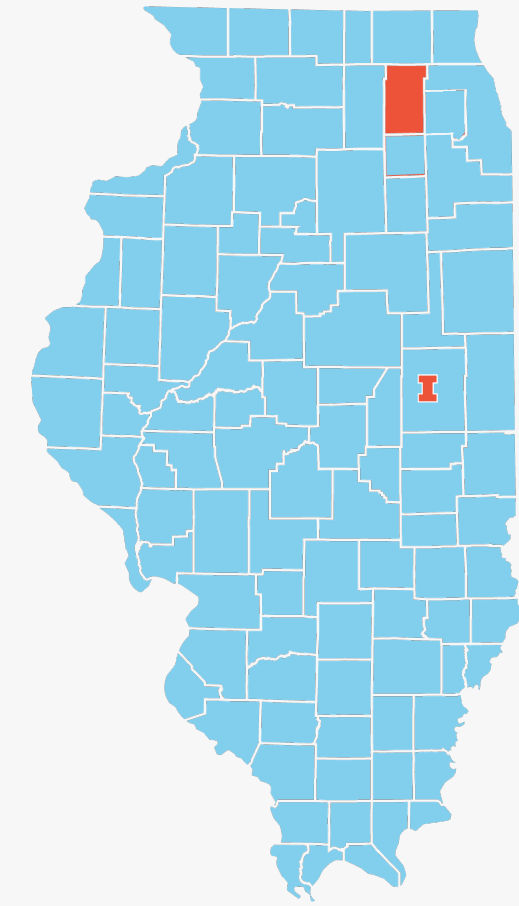
Multi-Setting • Multi-layered

Statewide Reach & Impact



- All 102 IL Counties
- Over 1 million households
- 59% of adults take healthy actions after exposure to SNAEd
 - Eating more fruits & veggies
 - Trying new recipes at home
 - Starting to be more active
- 158 community coalitions
- 1200+ changes made in 462 partner sites to help make the healthy choice the easy choice
 - Promoting local foods to increase food security
 - Placing community signage to prompt healthy choices
 - Workforce training to extend healthy changes

Kane County Reach & Impact

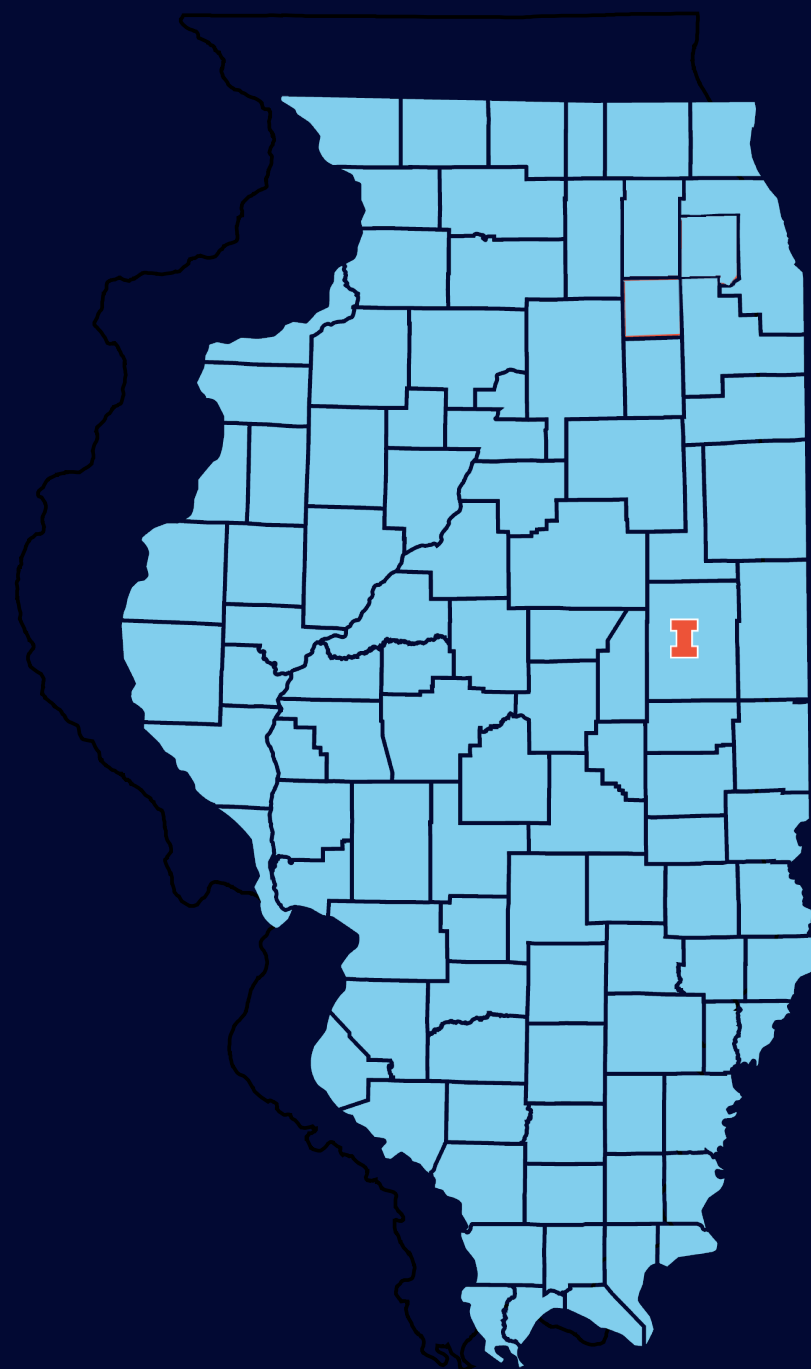


Direct Education (2025)

- 4,062 contacts
- 59.6% identify as Hispanic
- 15% identify as Black

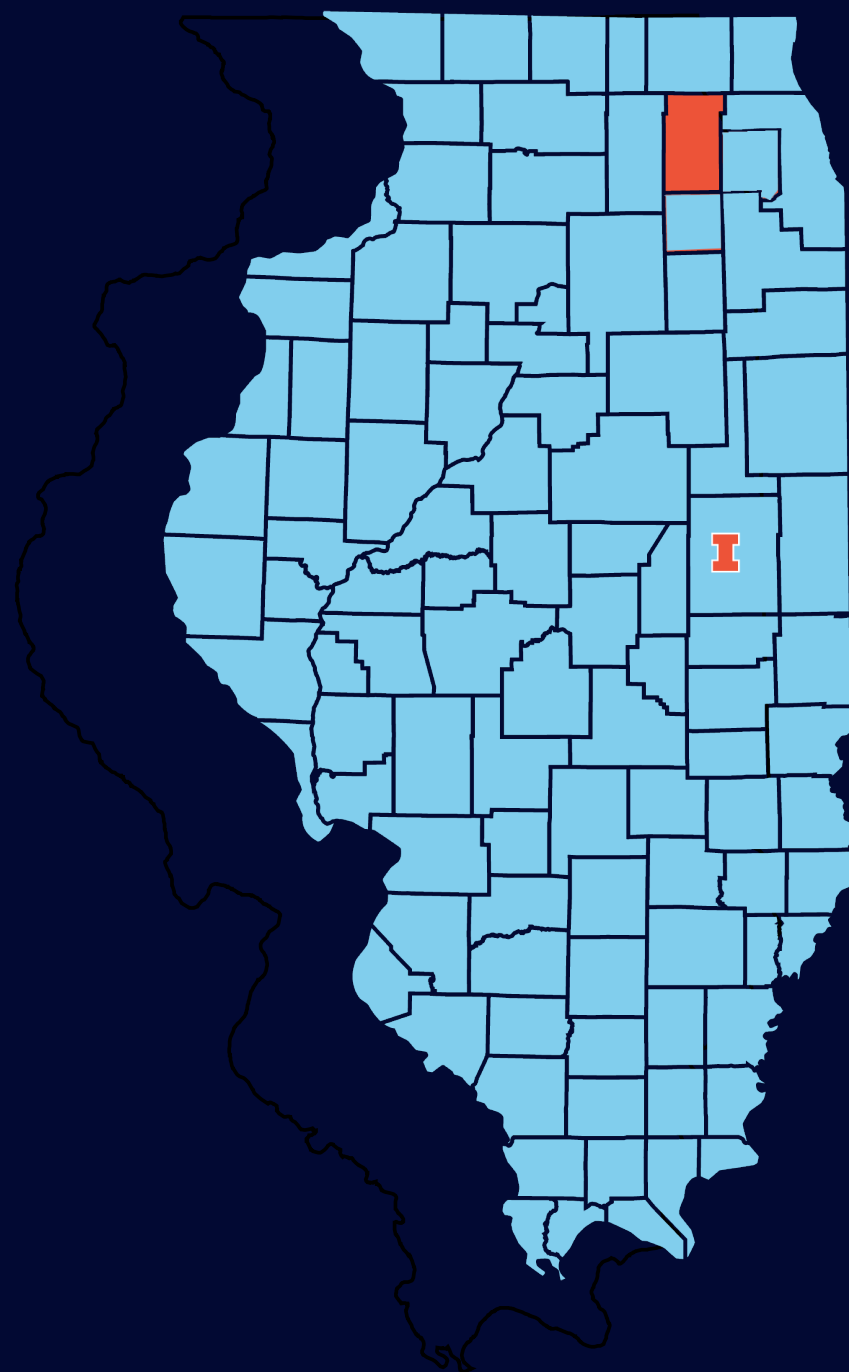
Policy, Systems, and Environmental

- 2,791 contacts with reach of 4,203 (2025)
- 85+ PSE changes (2025)
- Part of four Kane-based coalitions
- 4,032 pounds of food donation (2024)
- \$31,500 of external funds leveraged (2024)



1,878 Statewide Partners

- K-12 Schools 503
- Food banks & pantries 301
- Parks & recreation 163
- Early childhood & daycare 114
- Faith-based organizations 96
- Non-profits - 78
- Healthcare- 72
- Ag & farmers markets 69
- Libraries- 68
- Low income housing programs 57



50+ Kane County Partners

Reaching people where they eat, learn, live, play, shop, and work

- Charitable Foods- 10
- Coalitions—4
- Community Gardens-9
- Community Sites-3
- Early Childhood/Schools- 11
- Farmer's Markets-3
- Health Care-8
- Low Income Housing / Senior Sites5

Kane County Partners

CHARITABLE FOODS

- Aurora Interfaith Food Pantry
- Batavia Interfaith Food Pantry
- Community Unit School District 300 Food Pantry
- FISH Food Pantry
- Food for Greater Elgin
- Marie Wilkinson Food Pantry
- Sugar Grove Food Pantry
- Mercy Housing Batavia Food Pantry
- Two Rivers Food Pantry
- Well Child Center Food Pantry



COALITIONS

- AOK - All Our Kids Network
- EPEL - Enriching Partnerships for Early Learning
- Kane County Health Counts – Kane County Health Department
- SPARK - SPARK Aurora Early Childhood Collaboration

Kane County Partners

COMMUNITY GARDENS

- Aurora Area Interfaith Food Pantry
- Boys and Girls Club Elgin
- Centro de Información
- Charity Blooms
- CUSD 300 Garden
- IDEA Garden
- McCleery Elementary School Garden
- Mercy Housing Batavia
- One Hope United Garden

COMMUNITY SITES

- Boys and Girls Club Elgin and South Elgin
- Aurora Public Library
- Family Focus Aurora



EARLY CHILDHOOD/SCHOOLS

- Aurora Quad County Urban League
- Bright Point Child and Family Center
- Community Unit School District 300
- East Aurora School District 131
- Jerri Hoffmann Child & Family Center
- Mooseheart
- One Hope United
- School District U-46
- Two Rivers Head Start
- Waubensee Community College
- West Aurora School District 129

Kane County Partners

FARMER'S MARKETS

- Aurora Farmer's Market Downtown
- Aurora Farmer's Market West
- Elgin Harvest Market

HEALTH CARE

- Aunt Martha's Aurora Community Health Center
- Centro de Información
- Community Health Partnership of Illinois
- Department of Health and Human Services - Aurora
- Northwestern Medicine
- Rush Copley
- VNA Aurora
- Well Child Center

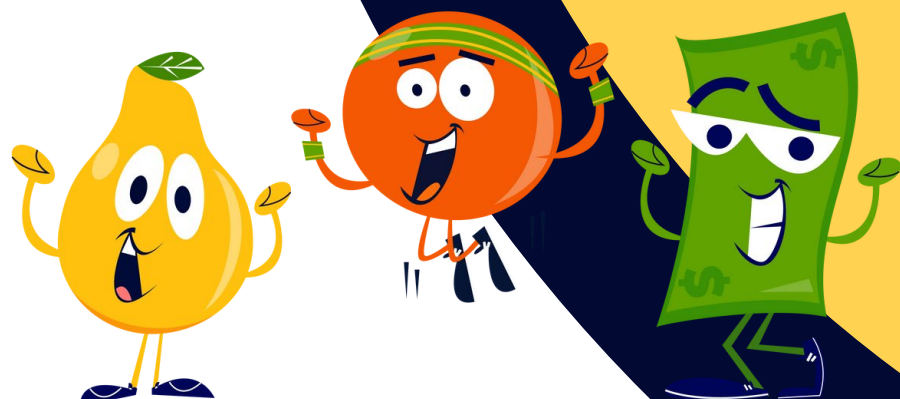
LOW INCOME HOUSING / SENIOR SITES

- Constitution House
- Hesed House
- Mercy Housing Batavia
- Sugar Grove Senior Residences
- Kane Food Access Sites



For every \$1 spent on
Illinois SNAP-Ed, the
program returns
up to **\$9.54**
in future benefits.

IL SNAP-Ed Impacts Flyer
go.illinois.edu/ILSNAPEdImpacts



Future savings are generated from....

\$35.7 – \$65.8 million

Healthcare cost savings

\$40.3 – \$69.5 million

Increased education,
life expectancy,
and lifetime earnings

Future savings are generated for....

\$23.9 - \$43.5 million

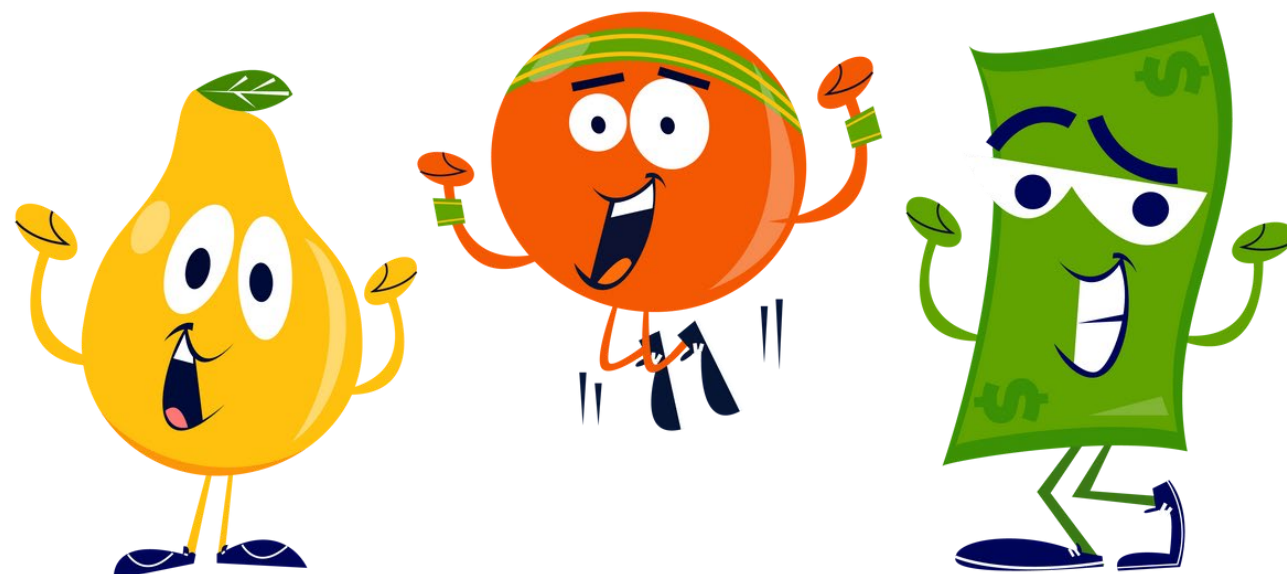
Federal government

\$5.4 - \$9.4 million

State and local governments

\$46.7 - \$82.4 million

Households and the private sector





Current SNAP -Ed Situation

Due to the passage of the One Big Beautiful Bill Act (H.R. No. 11921), SNAP-Ed funding officially ends on September 30, 2025.

In Illinois, we have been notified that we can offer scaled-back programming through the end of 2025 using unspent funds.



Striving to responsibly manage remaining resources while continuing to serve our community:

- Providing programs dependent on staffing
- Not offering food demonstrations, cooking activities, or tastings
- Working with groups to identify what options are available to best suit needs



**Moving forward,
SNAP -Ed work
will be lost without
alternative funding.**



Illinois Extension
UNIVERSITY OF ILLINOIS URBANA-CHAMPAIGN

Local Food Access Funding



Active Programs

CUSD 300 Food Pantry / Carpentersville Middle School / DeLacey Family Education Center

- Established garden to support on-site pantry; formed garden clubs at both schools; integrated gardening into mental health programs; supported by SNAP-Ed PSE.
- Neighbors served by pantry: 200 per week
- District serves: 21,000 students

East Aurora Resiliency Center

- Introduced hydroponic and raised-bed gardens to enhance mental health initiatives and provide fresh produce for school meals; supported by SNAP-Ed PSE.

Active Programs



“The garden has changed my visits at the pantry. Previously, everyone would keep to themselves. Now, with the garden, everyone comes out, we walk the garden, look at all the vegetables, and admire their beauty. Many of us gather on the deck and talk and share stories of delicious recipes. It has brought us together and is now a great meeting place to catch up with our fellow pantry friends.”

- Aurora Area Interfaith Food Pantry client

Aurora Area Interfaith Food Pantry

- Enhanced on-site garden to supply pantry needs; partnered with Master Gardeners and pantry volunteers; supported by SNAP-Ed DE and PSE.
- Neighbors served: 1,500 per week

Marie Wilkinson Food Pantry / Charity Blooms Garden

- Expanded and improved garden to provide fresh produce for Marie Wilkinson Food Pantry; partnered with Master Gardeners and Local Foods Small Farm Educator; supported by SNAP-Ed PSE.
- Neighbors served: 1,900 per week



Active Programs

Boys & Girls Club Elgin

- Upgraded on-site garden to promote youth mental health and increase access to fresh produce for summer and after-school meals; supported by SNAP-Ed DE and PSE.
- Youth served: 500



Mercy Housing Food Pantry / Garden (Batavia)

- Improved youth garden and created new adult garden for pantry support; developed volunteer team to maintain gardens; launched youth garden program; partnered with Master Gardeners; supported by SNAP-Ed DE and PSE.
- Neighbors served: 400 – 600 (Pantry numbers are much less)

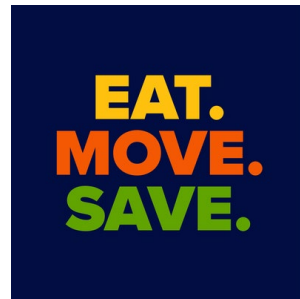


Active Programs

IDEA Garden (St. Charles)

- Provided fresh produce to local pantries including Centro de Información (Elgin) and Well Child Center (Elgin); collaborated with Master Gardeners and Local Foods Small Farms Educator; supported by SNAP-Ed PSE.
- In the future, the goal is to host educational programs on site in an outdoor education structure.





Questions?

Let's Connect!

Christine Birns

Extension Educator

cbirns@illinois.edu

Deanna Roby-Vorgias

County Director

robv@illinois.edu

STATE OF ILLINOIS)

SS.

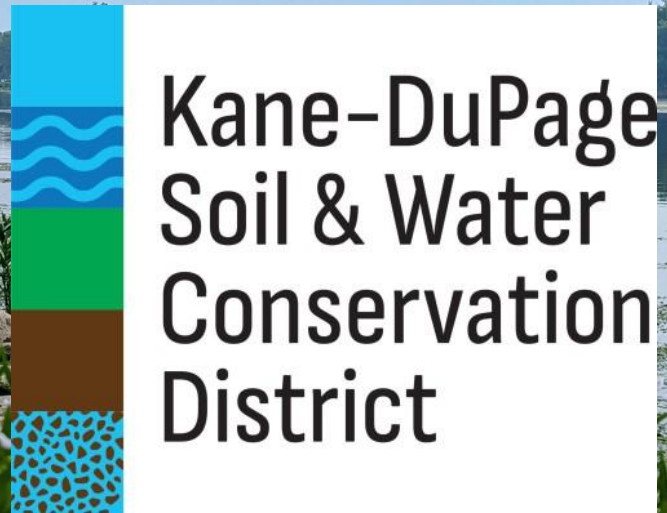
COUNTY OF KANE)

PRESENTATION/DISCUSSION NO. TMP-25-1146

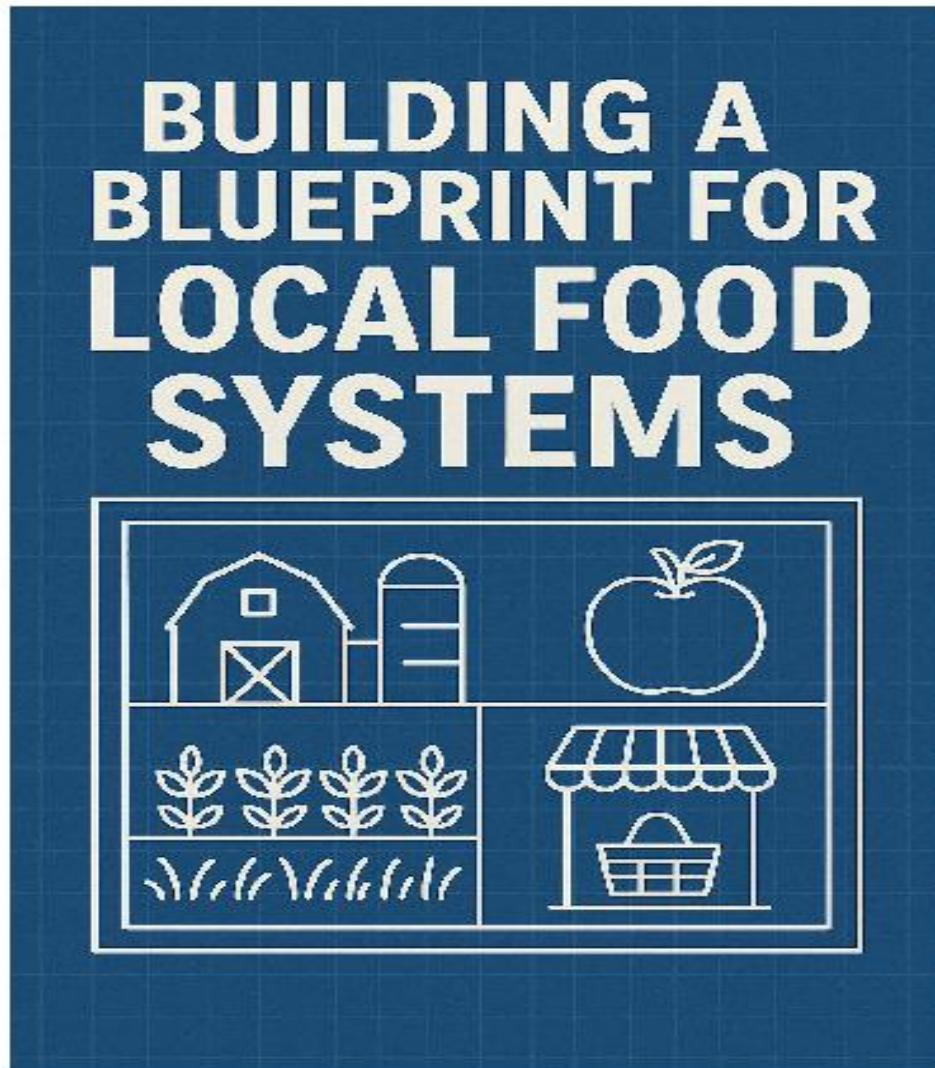
KANE-DUPAGE SOIL AND WATER CONSERVATION DISTRICT UPDATES

(ISABELLA BORZEKA, SENIOR RESOURCE ANALYST)

September 2025 Updates



Urban Ag Workshop



Hosted by:



NORTH COOK COUNTY
SOIL & WATER
CONSERVATION DISTRICT

Bootstrap methods
for farmers and food producers
building sustainable and profitable
businesses that focus on bringing
healthy, local foods into
communities that need them.

*Marketing, merchandising, social media,
connecting with buyers and more!
Network with agricultural landowners/operators,
share experiences and offer support.*

Lunch will be served
Registration Required

Limited to 30 attendees



Keynote Speaker Adam Cohen
Farmer, Trainer, Teacher.
Helping farmers to build
profitable (urban) farms in
today's world.

Additional Experts:

Joseph Bridges, *NRCS District
Conservationist*

Alexis Barnes, *Extension Educator
Local Food Systems
& Small Farms*

Isabella Borzeka, *KDSWCD Senior
Resource Analyst*

Thursday, October 16
10:00 am - 1:30 pm
Rolling Knolls Pavilion
Elgin



Date, time, and venue are finalized. All remaining information is subject to change.

STATE OF ILLINOIS)
COUNTY OF KANE) SS.

PRESENTATION/DISCUSSION NO. TMP-25-1147

GROWING FOR KANE PROGRAM UPDATES (MATT TANSLEY, PLANNER)

Growing for Kane Program Updates

- Urban Agriculture Innovative Production Grant Program
- Food and Farm Resiliency Grant Program



Kane County Agriculture Committee

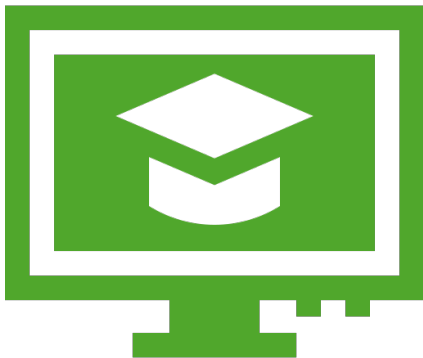
September 18, 2025

Matt Tansley, Planner

Urban Agriculture Innovative Production Grant Program (UAIP)

Master Urban Farmer Training Program

Cohort 1 (2024) – 12 Trainees
Cohort 2 (2025) – 5-6 Trainees



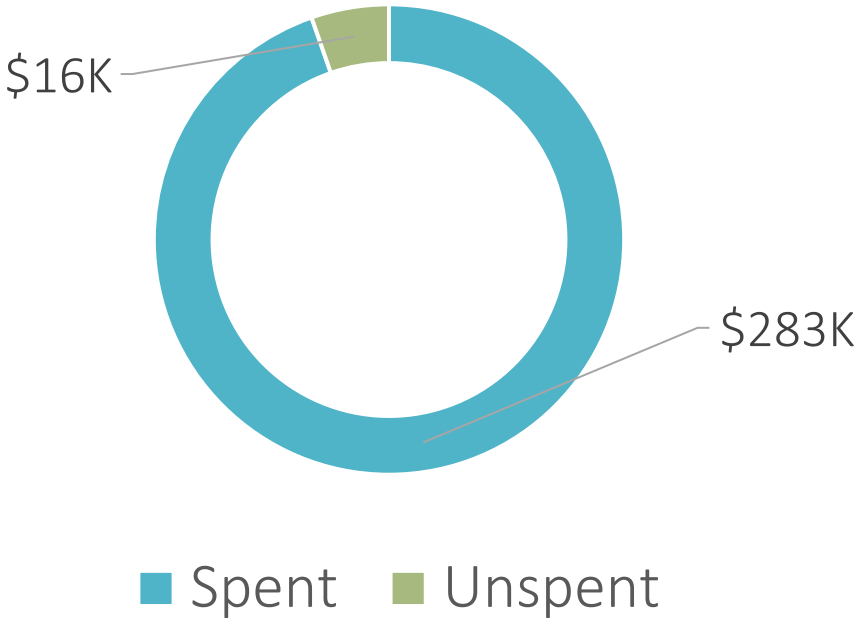
Equitable Local Food Access

Cohort 1 (2024) – 12 Trainees
Cohort 2 (2025) – 5-6 Trainees

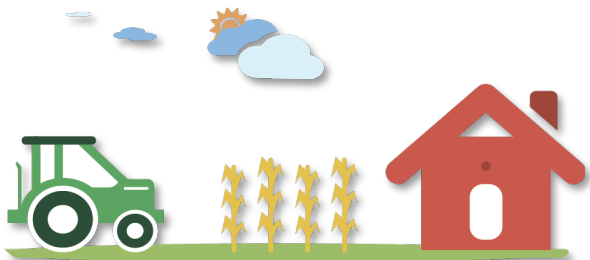


Urban Agriculture Innovative Production Grant Program (UAIP)

Balance of Program Funding	
Master Urban Farmer Training Program (MUFTP)	\$219,253
Equitable Local Food Access Projects	\$63,946
Total Expenditure To Date	\$283,199



Total Program Award: \$299,185



Food and Farm Resiliency Grant Program

Program Recap

Kane County received 29 applications, 19 were determined to be eligible recipients (all agreements executed)

Activity

ARPA Team has continuously received and processed reimbursement requests.

Award amounts
ranged from
\$11K - \$50K

Funds Awarded to Kane
County Food Growers
\$633,205

Remaining Balance of
Funds
\$121,795

