



Kane County

KC Energy and Environmental Committee

Government Center
719 S. Batavia Ave., Bldg. A
Geneva, IL 60134

Agenda

BATES, Tarver, Allan, Kiou, Penesis, Strathmann, Young, ex-officios Roth (County Vice Chair) and Pierog (County Chair)

Friday, July 11, 2025

9:00 AM

County Board Room

2025 Committee Goals

- Pursue funding to improve energy efficiency in Kane County Government-owned buildings
 - Upon passage of the Tree Protection Ordinance, develop budget and implementation strategy for the Ordinance and an educational program to promote Tree Protection
 - Develop Client Action Implementation teams and assist team in prioritizing action items and development strategies
 - Increase education and improve overall recycling in Kane County buildings
 - Community outreach to education about the CAIP
-

1. Call To Order

2. Roll Call

3. Remote Attendance Requests

4. Approval of Minutes: June 13, 2025

5. Public Comment (Agenda Items)

6. Environmental (J.Wollnik)

A. Resolution: Authorizing Kane County to Enter Into Community Solar Subscriptions

7. Recycling/Solid Waste (C. Ryan)

A. Internal Recycling Program & EEC Goal Progress

8. Sustainability (S.Hinshaw)

A. Illinois EPA's Climate Pollution Reduction Grant Updates

B. Smart Irrigation Systems - Pilot Project

C. Climate Action Implementation Plan Team Updates

9. New Business

- 10. Chairs Comments**
- 11. Reports Placed On File**
- 12. Executive Session (if needed)**
- 13. Adjournment**



RESOLUTION / ORDINANCE EXECUTIVE SUMMARY ADDENDUM

Title

Authorizing Kane County to Enter Into Community Solar Subscriptions

Committee Flow:

Energy and Environmental Committee, Executive Committee, County Board

Contact:

Jodie Wollnik, 630-232-3499

Budget Information:

Was this item budgeted? n/a	Appropriation Amount: \$n/a
If not budgeted, explain funding source: n/a	
Was this item passed through the appropriate committee? n/a	

Summary:

Community Solar Subscriptions can save the County 10% on the ComEd portion of our Energy Bills. Subscriptions fill quickly and this Resolution will allow the Chairman to enter into subscriptions after review by the Energy Consultant and SAO

STATE OF ILLINOIS)

SS.

COUNTY OF KANE)

PRESENTATION/DISCUSSION NO. TMP-25-789

INTERNAL RECYCLING PROGRAM & EEC GOAL PROGRESS



Internal Recycling Program

July 11, 2025



Clair Ryan
Kane County Recycling Coordinator
recycle@kanecountyil.gov

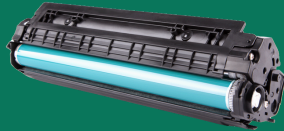
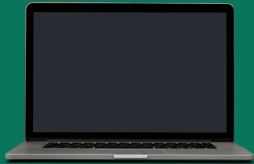


E&E Committee 2025 Goal:

Increase education and improve overall recycling in Kane County buildings

 Hard-to-Recycle Materials

 Single Stream Recycling (paper, packaging, containers)



Kane County Diversion of Hard-to-Recycle Materials

-  Electronics: ITD equipment via HOBI, non-ITD equipment via KCR Recycling Centers (TV/monitor fees apply)
-  Batteries: Call2Recycle Boxes for all portable battery types in several departments
-  Print Consumables: Boxes in the mail room for toner cartridges, waste toner drums, etc. that do not come with a return label (NEW 2024) + kiosk bin at Fabyan for ink jet cartridges
-  Metal: Departments rent scrap metal roll off containers (KDOT, Building Mgmt)
-  Paint: Will work with Building Management to make sure they know locations of PaintCare drop offs (free) starting next year + spray paint accepted at Fabyan (fee applies)
-  Lamps: Building Management required by law to manage mercury-containing lamps (fluorescents) under federal & state hazardous waste laws
-  Special Waste & Construction Debris: Kane Co. Recycling Coordinator consults with other departments on projects likely to yield special waste and construction debris
-  Office Supplies: Large items thru Purchasing, smaller items via annual Enviro Management Supply Swap

Single Stream Recycling: The Players



All County Employees



Visitors



Custodial Staff



Contracted Waste Hauling Company
(WM)

Single Stream Recycling: The Roles

County Employees & Visitors	Custodians	Waste Company
<p>Know what is and is not accepted as recyclable (it's the same as at home!)</p> <p>Make sure recyclables are clean(ish) and empty</p> <p>Break down boxes and remove packaging</p> <p>Put recyclables in blue bins</p> <p>Put bulk recyclables in outdoor receptacles (some employees)</p>	<p>Consolidate recycling from each can/bin <u>separately from trash</u> and deposit it in the correct outdoor receptacle <u>unbagged</u></p> <p>Remove obvious contaminants from recycling stream as time and safety allow</p>	<p>Specify what is and is not accepted as recyclable (based on sorting equipment and markets)</p> <p>Collect material from County outdoor recycling receptacles</p> <p>Ensure that recyclable material is sorted and marketed</p> <p>Educate customer (depending on contract language)</p> <p>Make money (reduce costs, increase revenues)</p>

Recycling Education & Logistics: The Roles

Kane County Recycling Coordinator	Building Management	Waste Company
<p>Responsible for educating staff and the general public</p> <p>Responsible for specialized custodial and departmental training</p> <p>Responsible for implementing the Solid Waste Management Plan and County Recycling Ordinance</p>	<p>Responsible for managing contract with Waste Management within budget</p> <p>Responsible for day-to-day direction and performance evaluation of custodial staff</p>	<p>Retains educator on staff</p> <p>Gives service recommendations to Building Management (balancing positive customer relationship with cost overruns caused by contamination)</p>

Some History...



Photos by Jennifer Jarland, Spring 2017

Fast Forward...



Recycling Dumpster outside Building B, June 26, 2025

Developments in Last 12 - 18 months

-  Padlocks added to most recycling containers and some trash containers to curtail fly dumping / identify contributors to recycling contamination
-  Janitorial services transitioned from contractors to County staff positions
-  Personnel changes in Building Management leadership & project management positions
-  WM replaced most of our recycling containers with containers with yellow lids and clearer marking
-  Custodial staff recycling guide (English and Spanish), Jan 2025
-  KCR and WM staff gave a joint recycling training to custodial staff, Jan 2025
-  All-staff recycling guide, uploaded to the intranet and sent out by HR, July 2025



Recycling Program Gaps/Obstacles

- ♻️ Almost no recycling is happening at the Judicial Campus
 - JJC is the only building on that campus with a recycling dumpster
 - Recycling container removed from MUB, Jan. 2022 (space constraints in corral + contamination fees)
 - Building management staff have expressed reservations/concerns about fees if recycling were added to AJC service
- ♻️ We are not in compliance with our Countywide Recycling Ordinance, which requires all commercial and institutional entities that generate recyclables to recycle
- ♻️ We have indications that when contamination fees are incurred, custodial staff are being directed to either stop recycling or to only recycle certain material (cardboard and maybe office paper)
 - WM frequently suggests to commercial customers with contamination issues/fees to reduce recycling efforts to only cardboard
 - This is still a violation of the ordinance if any other material is generated at the site (so, if people frequently bring in bottled/canned drinks, if there's a drink vending machine, etc.)
- ♻️ Container lock usage is inconsistent (the people who need keys don't always have them, etc.)

Potential Solutions

- ♻️ Interdepartmental commitment to and partnership on recycling is needed
 - All County employees are probable participants
- ♻️ More thorough audit of existing containers to ID specific deficiencies/issues using key staff on each campus
 - Audit on padlocks + development of lock/key plan
- ♻️ Additional, more frequent staff training
 - Custodial staff (Spanish language availability is vital)
 - Performance evaluation should include recycling consolidation tasks
 - All staff refresher?
 - Departmental trainings

Staff across the County have expressed their disappointment that the County is not recycling properly, often having seen custodial staff or contractors put recycling and garbage into the same bin and/or having observed that there is no recycling dumpster at their building.
Dedicated recyclers take their recycling home with them.



Questions or Comments?

Clair Ryan

Kane Co. Recycling Coordinator

o: 630-208-3841

c: 224-230-7926

e: recycle@kanecountyil.gov
ryanclair@kanecountyil.gov



*Thank
You*

STATE OF ILLINOIS)

SS.

COUNTY OF KANE)

PRESENTATION/DISCUSSION NO. TMP-25-799

ILLINOIS EPA'S CLIMATE POLLUTION REDUCTION GRANT UPDATES



CPRG Update

Background

- The U.S. Environmental Protection Agency (EPA) Climate Pollution Reduction Grant (CPRG) program provides funding for states to develop and implement climate action plans that aim to reduce greenhouse gas (GHG) emissions.
 - Phase 1
 - Submitted a Comprehensive Climate Action Plan on March 1, 2024
 - Phase 2
 - IEPA was awarded \$430 million to implement the Climate Pollution Reduction Grant plan

Phase 1

OUR APPROACH

The State has leaned on stakeholder input to identify priority measures for GHG reduction that complement, supplement, or enhance current state and federal programs, policies, or initiatives that result in GHG reduction and pollution reduction.

CLEAN BUILDINGS

Gap Closing Catalyst Fund

Navigator Program

Shared Portal

Workforce/Contract or Gaps

Networked Geothermal

Accelerate Stretch Code Adoption

Municipal Building Planning & Support

Large Building Strategic Planning

CLEAN FREIGHT AND FLEET

Charging Infr. for Small/Med Fleets

Clean Freight Planning + Engagement

Trackside Power at Rail Yards

On-Road / Off-Road Vehicle Support

Clean Fleet and Freight Concierge

Community Data Collection

Workforce Training for Fleet Operators

Workforce Training for HD Charging

CLEAN INDUSTRY

Clean Industry Concierge

Buy Clean Planning + Pilot

Fluorinated Gas Reduction Program

Regional Industrial Decarb. Challenge

CLEAN AGRICULTURE

Cover Crop and No-Till Management

Biomethane Management

Clean Small Engines Program

Natural Carbon Storage

CLEAN POWER

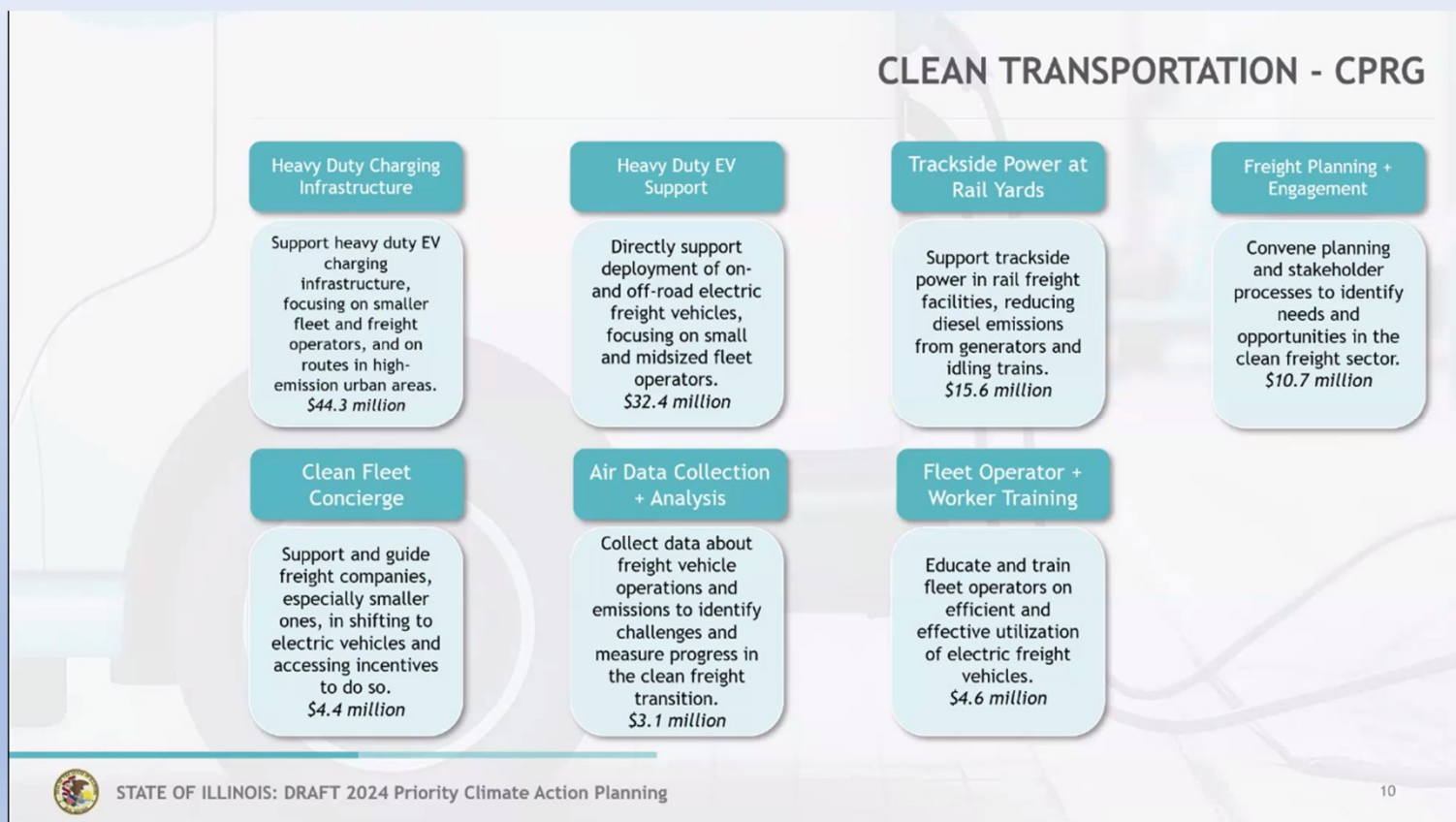
Clean Energy Planning Support



Phase 2

- The grant will fund projects in five priority areas: Accelerating Clean & Efficient Building Adoption; Deploying Clean Transportation & Freight; Kick-starting Industry Decarbonization; Expanding Climate-Smart Agriculture; and, Keeping Clean Power Goals on Track.
- The projects together will reduce more than fifty-seven million tons of greenhouse gas emissions over the next twenty-five years.
- Stakeholders Meeting on June 26 gave insight to how the funds will be distributed

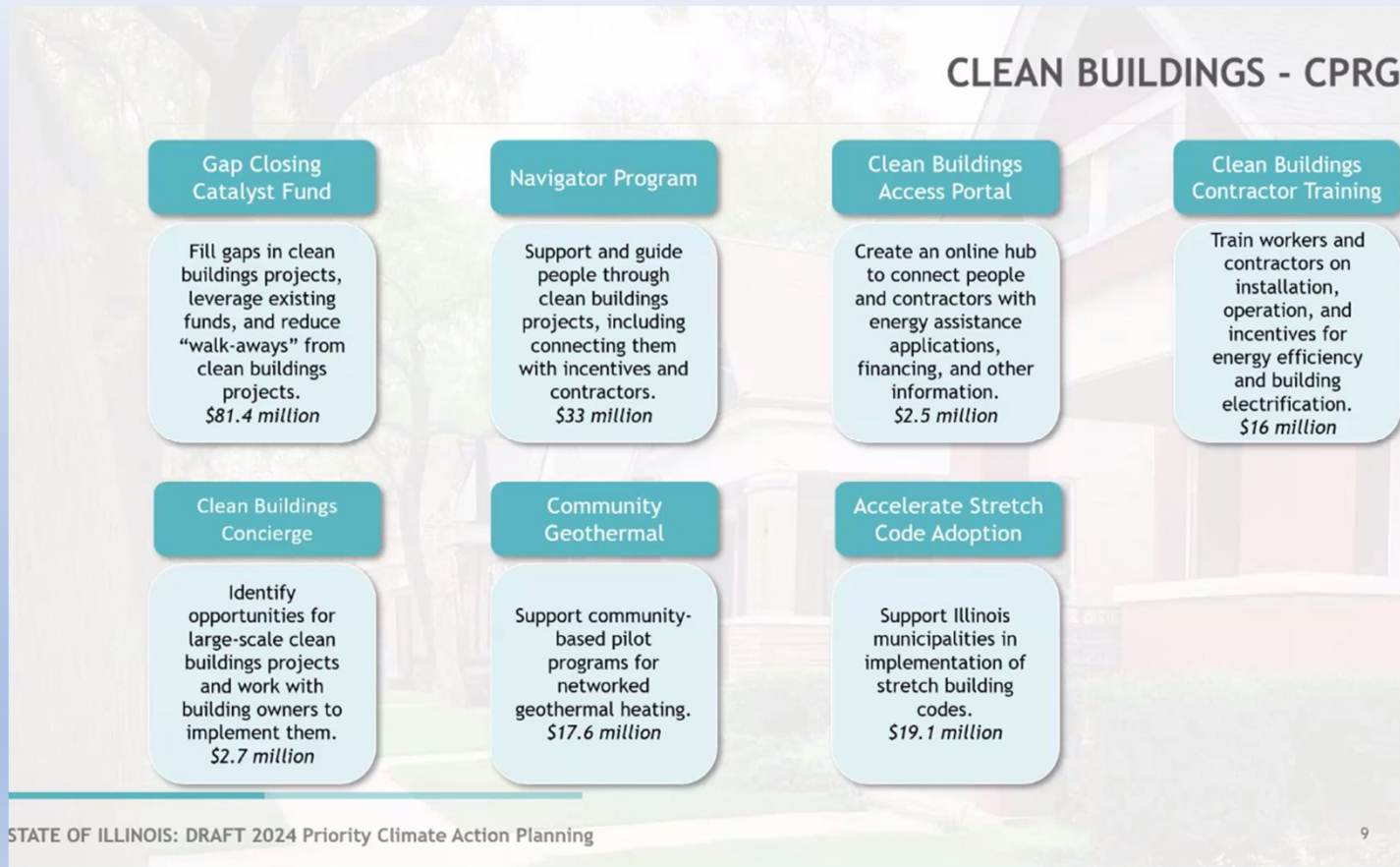
Transportation



Noteworthy for Kane County:

Most of these focus on freight and have duty EV chargers, unlikely to be available for Kane to apply for grants in Transportation

Clean Buildings



Noteworthy for Kane County:

Unclear at this time who is eligible for the upcoming grants (i.e local government, non-profit).

Accelerate Stretch Code Adoption
- Financial assistance for municipalities

Clean Power

CLEAN POWER - CPRG

Statewide Clean Energy Modeling

Support statewide modeling and planning to identify needs and solutions for Illinois' clean energy and climate targets.
\$3.7 million

Public Utility Clean Energy Modeling

Support municipal and public utilities to plan and deploy clean energy.
\$2.6 million



Noteworthy for Kane County:

Support municipalities and public utilities to plan and deploy clean energy

Clean Power

CLEAN AGRICULTURE + LAND USE - CPRG

Crop Residue Management

Implement sustainable, GHG-reducing agricultural practices, such as low/no-till farming and cover crops.
\$73.4 million

Biomethane Management

Reduce and capture methane emissions from livestock, wastewater, and landfill operations.
\$26.2 million

Clean Small Engines

Support the transition to all-electric lawn equipment, with a focus on highly-utilized professional landscaping equipment.
\$12.1 million

Noteworthy for Kane County:

Support for farmers soil conservation practices – financial and technical



Other questions from Stakeholders

- When will the funding be distributed?
 - Some programs have started such as the Navigator program others will start as late this year to early next year but will be expanded over a 5 year period
- What percentage will go to local governments?
 - Can not specifically answer that question at this time but unlikely local government will be eligible for all funding
- Plans to continue funding some of these programs after the funding runs out?
 - Short answer – We anticipate funding will continue for some programs

Thank you

Sarra Hinshaw PhD
(Ph) 630-208-8665
Environmental and Water Resources Department
[Sustain Kane Facebook Page](#)
[Sustain Kane Instagram Account](#)



STATE OF ILLINOIS)
COUNTY OF KANE) SS.

PRESENTATION/DISCUSSION NO. TMP-25-808
SMART IRRIGATION SYSTEMS - PILOT PROJECT

Smart Irrigation Systems

Pilot Study



CAIP Strategy and Action

- Strategy

- W 1: Promote increased water conservation and wastewater generation community-wide with a targeted reduction of 5% by 2030.

- Action

- Establish and promote a program supporting the installation of low-flow water fixtures in residential homes and commercial businesses as well as opportunities for real-time water and energy metering that may help customers better understand and reduce their water and energy consumption.
 - Goal: achieve 500 households and 40 businesses upgraded annually

What is Smart Irrigation?

- Using technology to optimize water usage in irrigation systems.
- Sensors and controllers to automatically adjust watering schedules based on real-time data, such as weather conditions and soil moisture levels.

Research

- Reached out to smart irrigation companies and met with Orbit

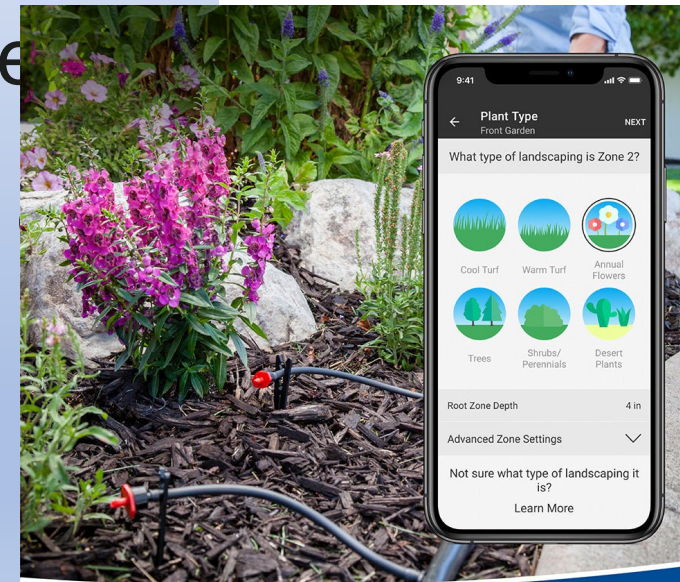


- B-hyve

- B-hyve technology helps you make watering decisions based on the ecological needs of your yard
- To date, B-hyve has helped conserve over **100 billion** gallons of water around the world.

The technology

- B-hyve XR Smart Indoor/Outdoor Sprinkler Timer
- Set up parameters for type of landscape each zone.
 - Turf, flowers, root depth, soil type, shade,
- Can set manually or water smart
 - Waters when needed based off your lawn setting and weather patterns

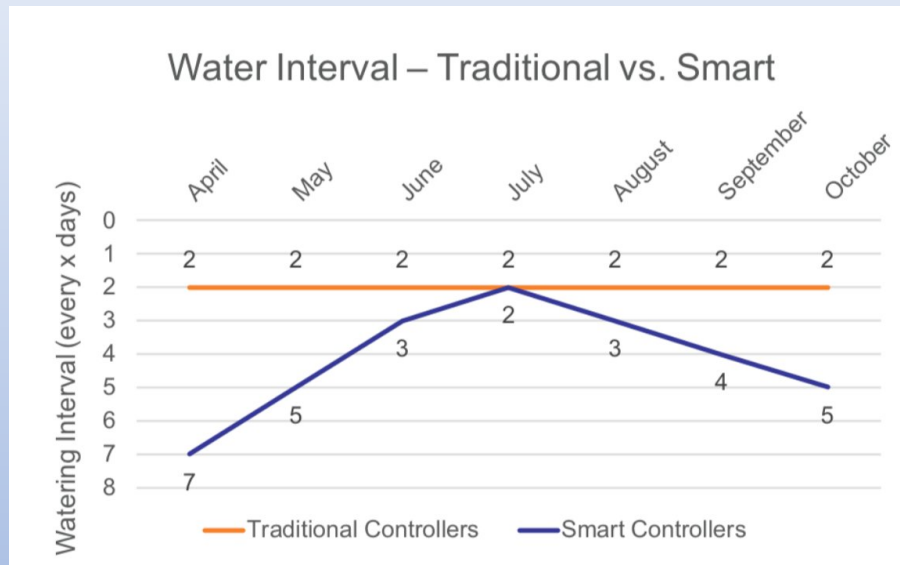


Smart Watering Based On Each Zone's
Soil, Plant Type, & More



Traditional vs. Smart Controller Scheduling

- Using a smart controller can eliminate 47% of waterings and save over 100,000 gallons...EACH YEAR



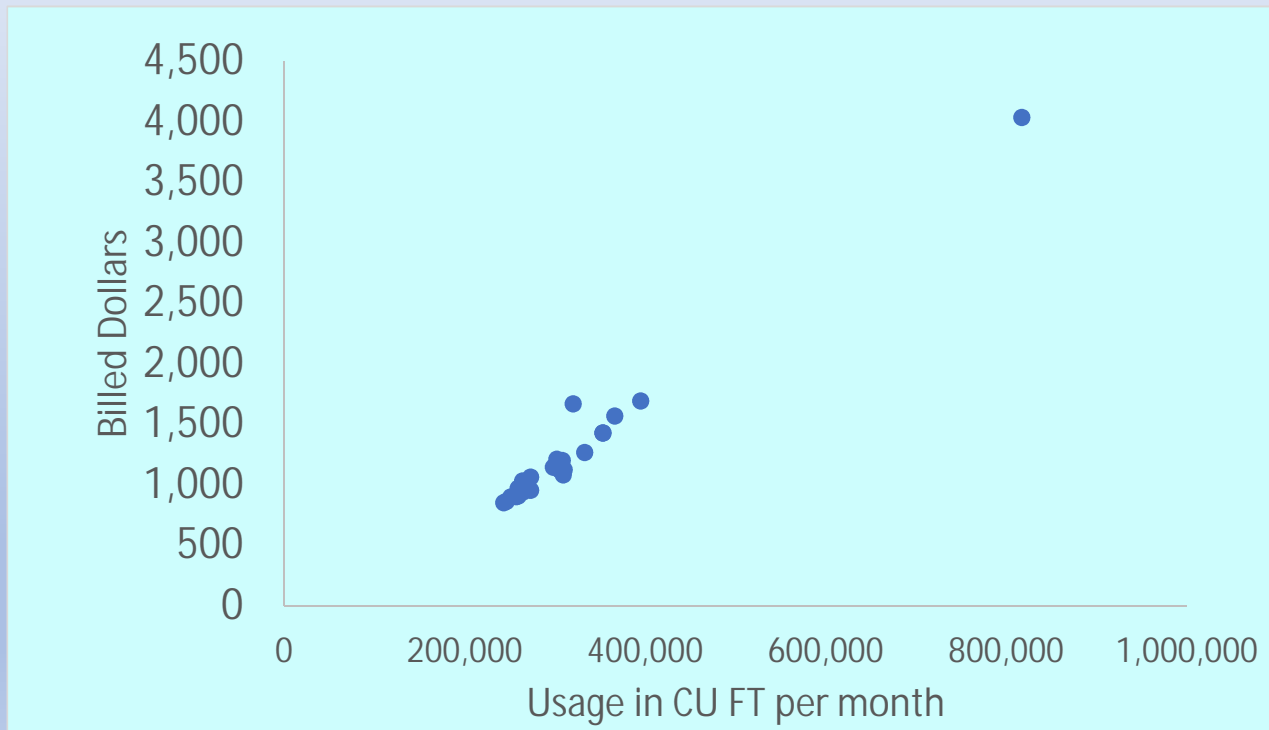
	Water Days	Gallons Per Watering	Gal Used
Traditional	90	2,500	225,000
Smart	48	2,500	120,000

47% Reduction
+
Rain Delays



Top users

- Wasco Sanitary provided the top 25 users usage and cost



Comparison
Sarraf's top
water usage =
250 CU FT
and \$34

Pilot Project

- Provide Smart Irrigation Systems to top user
- Funding through ARPA funds provided for the Kane County Water Conservation Technical Assistance Program
- Track usage over a 1 year period to demonstrate efficiency
- Provide real time data to residents
- Promote smart irrigation systems including financial incentives through Orbit

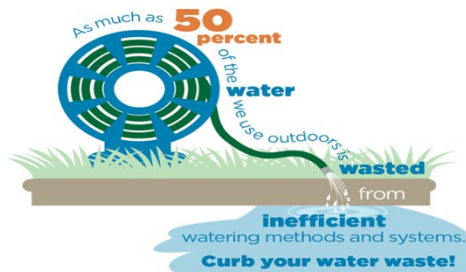
SAVE WATER WITH AN EFFICIENT SMART SPRINKLER SYSTEM

Kane County is launching a pilot program to help residents save money on their water bill. Our aquifers have been steadily declining over the past century and we're calling on residents to help us conserve water for future generations.

Using smart sprinkler systems can reduce water usage by 47% while maintaining a green beautiful lawn.

	Water Days	Gallons Per Watering	Gallons Unused
Traditional	90	2,500	225,000
Smart	48	2,500	120,000

Chicago Metropolitan Agency of Planning predicts Kane County needs to reduce its water usage by 12.2 million gallons a day to maintain a sustainable water supply



Source: WaterSense: An EPA Partnership Program



Kane County is running a pilot program to study water conservation using the the Orbit B-hyve Smart Indoor/Outdoor Sprinkler Timer



Orbit has saved over 250 billion gallons of water since its launch in 2016

It is estimated in Illinois the 40k Orbit users have collectively saved 4.5 billions gallons of water.

If your water bill is over \$400 per month and you are interested in sharing your data you may qualify for a free Orbit Smart Timer.

Contact Sarra Hinshaw if you are interested in participating
Email: HinshawSarra@kanecountyil.gov
Phone: 630-208-8665

Thank you

Sarra Hinshaw PhD
(Ph) 630-208-8665
Environmental and Water Resources Department
[Sustain Kane Facebook Page](#)
[Sustain Kane Instagram Account](#)



STATE OF ILLINOIS)
COUNTY OF KANE) SS.

REPORT NO. TMP-25-811

CLIMATE ACTION IMPLEMENTATION PLAN TEAM UPDATES



CAIP: Implementation Updates

Table of Contents

1. By the Numbers

2. Cycle #2 Actions

3. Next Steps

By the Numbers

- 30 Actions
- Average Attendance: 3.6
- Total Participants: 42

CAIP Implementation Teams:		
Team	Total Participants	Average Attendance
Buildings and Energy	9	4.1
Waste Management	8	5.7
Greenspace and Trees	7	3.6
Local Food and Agriculture	7	3.2
Climate Economy	5	2.5
Water and Wastewater	4	2.75
Transportation and Land-Use	4	2.4

Cycle #2 Actions: Climate Economy

Sector	Action Code	Progress	Action
Climate Economy	<u>CE1-2</u>	TBD	Conduct, or hire a consultant to conduct a Community-Wide Renewable Energy Potentials Study. Study should identify economic development opportunities as well as economic savings/impacts of expansion of renewable energy infrastructure within the community.
	<u>CE2-5</u>	TBD	Collaborate with school districts to promote youth development through support of programs like the Future Cities competition which challenge students to design projects for sustainability in their community.

Cycle #2 Actions: Local Food and Agriculture

Sector	Action Code	Progress	Action
Local Food and Agriculture	<u>FA3-5</u>	TBD	Equitability provide programmatic resources to: a) Increase the production and consumption of home-grown and locally sourced food by supporting farmers markets and community supported agriculture. b) Create policies and practices to encourage the purchase of healthy, climate-friendly and minimally processed foods for public meetings, events and facilities. c) Expand opportunities for food production and neighborhood-scale distribution including community gardens, especially for low-income populations and communities of color. d) Increase the use of public and private land and roof-tops for growing food. e) Increase the planting of fruit and nut trees in appropriate locations. f) Leverage the purchasing power of public and private institutions to source low-carbon and local foods including schools.
	<u>FA5-5</u>	TBD	Continue to promote farmland conservation to increase agriculture operations' economic resilience to potential decreases in revenue and costs increases associated with climate change.

Cycle #2 Actions: Greenspace & Trees

Sector	Action Code	Progress	Action
Greenspace and Trees	<u>GE2-6</u>	TBD	Develop guidelines and recommendations for types of native, climate adaptive plantings as turf alternatives for particular areas, such as parks, other open areas, and household backyards. Make publicizing the resource part of an overarching long-term communications plan for the climate actions and hold educational workshops.
	<u>GE4-4</u>	TBD	Explore establishing a lighting control ordinance to protect native plants, species, biodiversity, and improve night sky quality.

Cycle #2 Actions: Transportation & Land-Use

Sector	Action Code	Progress	Action
Transportation and Land-Use	<u>TL1-2</u>	TBD	Conduct, or hire a consultant to conduct a neighborhood walk audits to ensure streets are free from any hazards and ADA accessible.
	<u>TL1-10</u>	TBD	Implement a large-scale public bike sharing program to support continued population and employment growth and mobility within community. Explore opportunities to support bike sharing of cargo bikes. Review programs adopted by other communities to support program design.

Cycle #2 Actions: Water & Wastewater

Sector	Action Code	Progress	Action
Water and Wastewater	<u>W3-7</u>	TBD	Involve land managers to develop management approaches to conserve and restore riparian zones along tributaries that lead to the Fox River.
	<u>W3-12</u>	TBD	Assess the need for a Stormwater Utility Fee based on impervious surface and stormwater runoff calculations, including a Stormwater Credit for properties which implement strategies to meet or exceed stormwater retention and runoff reduction.

Cycle #2 Actions: Waste Management

Sector	Action Code	Progress	Action
Waste Management	<u>WM1-3</u>	TBD	Encourage and support creative solutions to consumption reduction: reuse, repair, and repurposing initiatives, including tool libraries, library of things, swap events, food-share opportunities, repair clinics, etc. Establish mini-grant programs to increase options and utilization.
	<u>WM1-13</u>	TBD	Establish a phase out of single-use products by 2026 by implementing an opt-in fee for such products. This should apply to (but not limited to) bags (both paper and plastic), utensils, napkins, and take-out containers. Explore the feasibility of establishing a reusable takeout container service within the community. Applies to businesses of any size. Encourage restaurants to allow customers to bring their own take-out containers.

Cycle #2 Actions: Buildings & Energy

Sector	Action Code	Progress	Action
Buildings and Energy	<u>BE1-7</u>	TBD	Explore establishing a Home Energy Scores program (performance tracking and reporting) and labeling program for homes listed for sale.
	<u>BE6-1</u>	TBD	Complete conversion of all streetlights to LED by 2028.

Cycle #2 Actions: Health and Safety

Sector	Action Code	Progress	Action
Health & Safety	<u>HS1-5</u>	TBD	Develop a toolkit for Emergency Response using the EOM resources available on the Kane County Emergency Management website and state and federal training to publicize the tool kit to ensure residents are aware and have access to the resources.
	<u>HS1-7</u>	TBD	Identify a sustainable funding source for increased utility assistance for low-income residents, including support for energy efficiency projects, such as weatherization.
	<u>HS1-9</u>	TBD	Consider establishing or updating Nuisances And Property Maintenance code to manage and mitigate mold or fungus. Include references to requirements in rental license.

Next Steps:

1. Review and refine all research collected from Cycle #2.
2. Meet with Internal Staff Members to go over actions and strategize the next steps.
3. Launch tracking page on Website (Due Date: August)
4. Prepare for Cycle #3 → Reconvene in 2-3 months

Any Questions?

Austin Powell
Sustainability Coordinator
powellaustin@kanecountyil.gov