



Operations Department Memorandum

TO: Benjamin Haberthur, Executive Director
FROM: Jeremy Jensen, Director of Operations
RE: November 2025 Department Monthly Report

OPERATIONS

Trail Maintenance & Dumped Refuse Cleanup

Trail maintenance is an ongoing, District-wide, year-round process; as mow season comes to an end, more attention can be focused on other trail work. This can include anything from tree removal and trimming along trail edges, to minor bridge repairs, and surface maintenance. Colder temperatures, rain, and even early season snow allow for easier access on our normally busy trail systems. New to the District this year, an expanded trail system has been installed at Big Rock Forest Preserve, including a new limestone loop on what was the old Deer Valley Golf Court. Crews replaced bridge decking and have been out to grade these new surfaces after equestrian traffic on the surface, reducing hazards for trail users caused by the divots left in the surface by the horses.

Staff recently completed a large-scale cleanup of a junk pile that was discovered a short distance off the internal trail system on the Stoney Creek FP property. The debris was revealed when the vegetation died back, staff noticed the materials partially covered by leaves in a ravine. The most difficult aspect of the project was getting the materials up out of the ravine to haul them away. After a lot of hiking up and down the hillside, they hauled out 1,500 lbs. of scrap metal, 30 used tires, and a full dump truck load of fencing, lumber and miscellaneous trash, with the majority of materials taken to recycling services.

Equipment Maintenance

Regular vehicle and equipment services and repairs continued in November. Utility carts were the main focus for Fleet this month. End of the season annual inspections and services have been completed for South Operations and Natural Resources; with North Operations equipment slated for early December. Cart inspections and services include tire evaluations, suspension checks, electrical diagnostics, drivetrain repairs, cooling system services, axle



Staff preparing a cart to grade trail surfaces.

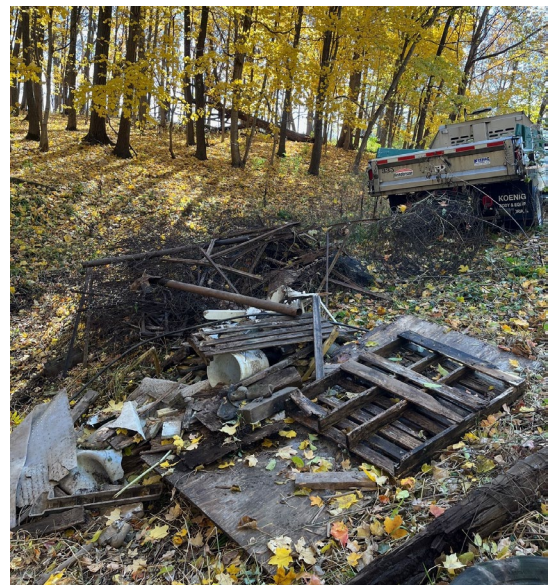


Photo of some of the debris found and cleaned up at Stoney Creek FP.



The 2025 Polar Express kicked off last month at Jon Duerr FP.

Operations Department Memorandum

November Report

replacements, brake inspections, tune-ups, oil changes, and filter replacements. These utility carts are utilized throughout the year for campground duties, preserve maintenance, trail upkeep, and heavy usage during the Districts prescribed burn seasons.

Bison Support

Operations staff have been busy behind-the-scenes with the bison project at Burlington Forest Preserve. New and additional signage was created for the enclosure to warn the public about safety surrounding the area of the fence area and a shed was constructed for storage of needed supplies.



One of the carts utilized during prescribed burns that is maintained by fleet crew.