





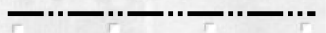
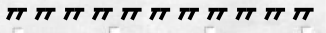

Matchline: A-2

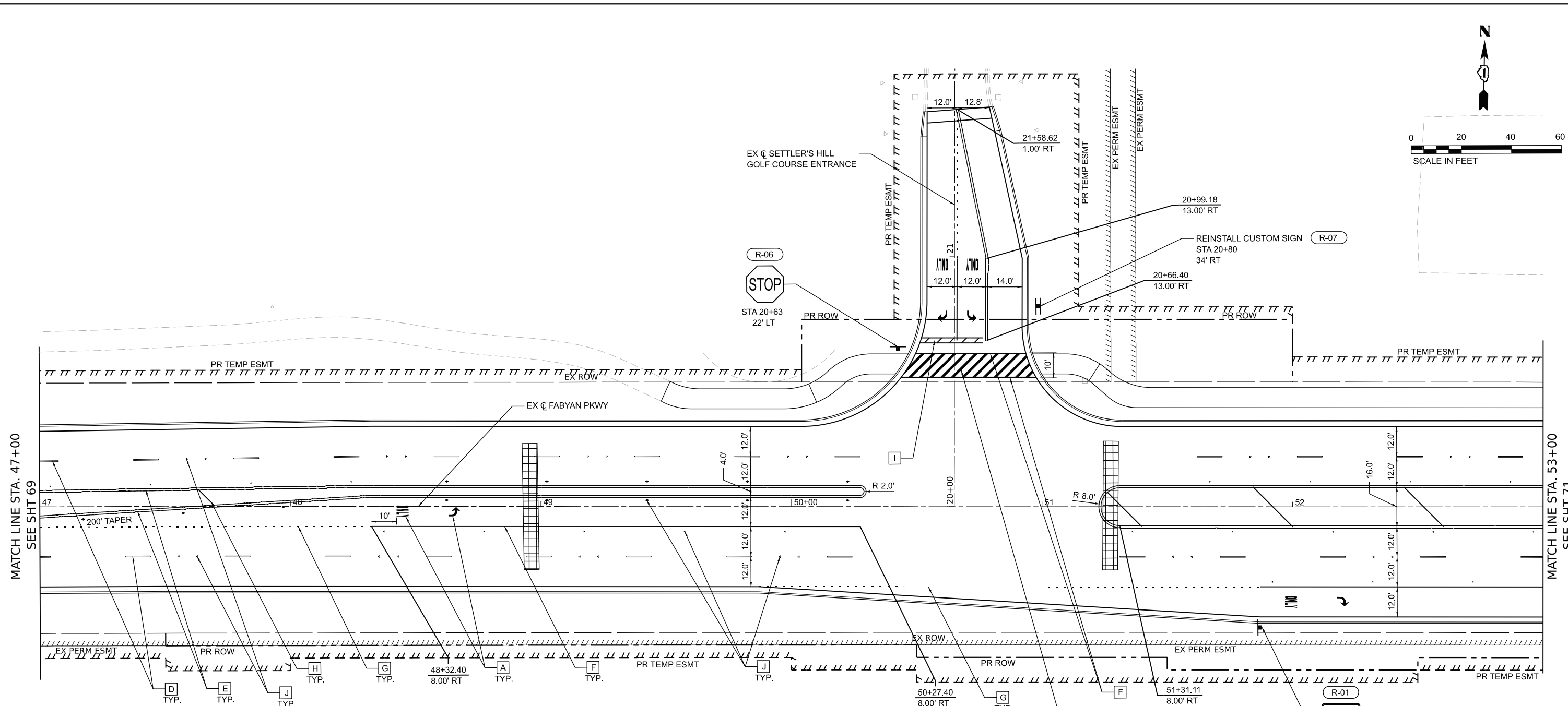


Proposed ROW & Temporary Construction Easement Limits

Scale: 1"=50'

A-1

LEGEND	
	Proposed Right-of-Way Acquisition
	Proposed Temporary Easement Area
	Proposed Right-of-Way
	Proposed Temporary Easement
	Existing Right-of-Way



PAVEMENT MARKING PLAN LEGEND

- A PAVEMENT MARKING - LETTERS & SYMBOLS WHITE
- B PAVEMENT MARKING - LINE 4", WHITE
- C PAVEMENT MARKING - LINE 4", YELLOW
- D PAVEMENT MARKING - LINE 4", WHITE SKIP-DASH - 10' DASH, 30' SKIP
- E PAVEMENT MARKING - LINE 4", DOUBLE YELLOW
- F PAVEMENT MARKING - LINE 6", WHITE
- G PAVEMENT MARKING - LINE 6", WHITE DOTTED - 2' DASH, 6' SKIP
- H PAVEMENT MARKING - LINE 12", YELLOW - 75' C-C (SEE IDOT STD. TC-13 FOR MEDIAN DIAGONAL SPACING)
- I PAVEMENT MARKING - LINE 24", WHITE
- J RAISED REFLECTIVE PAVEMENT MARKER

MU = MODIFIED URETHANE PAVEMENT MARKING
 R-## SIGN LEGEND # - SEE SIGN SCHEDULE FOR MORE DETAILS

- NOTES**
- ALL PAVEMENT MARKINGS ARE TO BE POLYUREA PAVEMENT MARKINGS (TYPE I), UNLESS OTHERWISE NOTED.
 - SEE IDOT STD. TC-11 FOR SPACING ON RAISED REFLECTIVE MARKERS. ALL REFLECTIVE MARKERS SHALL BE RECESSED IN PAVEMENT.
 - ALL PAVEMENT MARKINGS SHALL BE GROOVED 1" GREATER THAN MARKING AND RECESSED IN PAVEMENT, UNLESS OTHERWISE NOTED.

MODEL: Default
 FILE NAME: 2023-0001_KDOT Phase 1H Settlers and Fabian Parkway Project150_Dwdm\CAD\Phase 2 CAD\Sheets\Settlers_Hill_sht.pmk-02.dgn



USER NAME	= mit.patel	DESIGNED	- KSA	REVISED	-
DRAWN	- KSA	REVISIONS	-		
PLOT SCALE	= 40,000' / in.	CHECKED	- ASO	REVISED	-
PLOT DATE	= 10/24/2025	DATE	- 10/24/2025	REVISED	-

KANE COUNTY DIVISION OF TRANSPORTATION

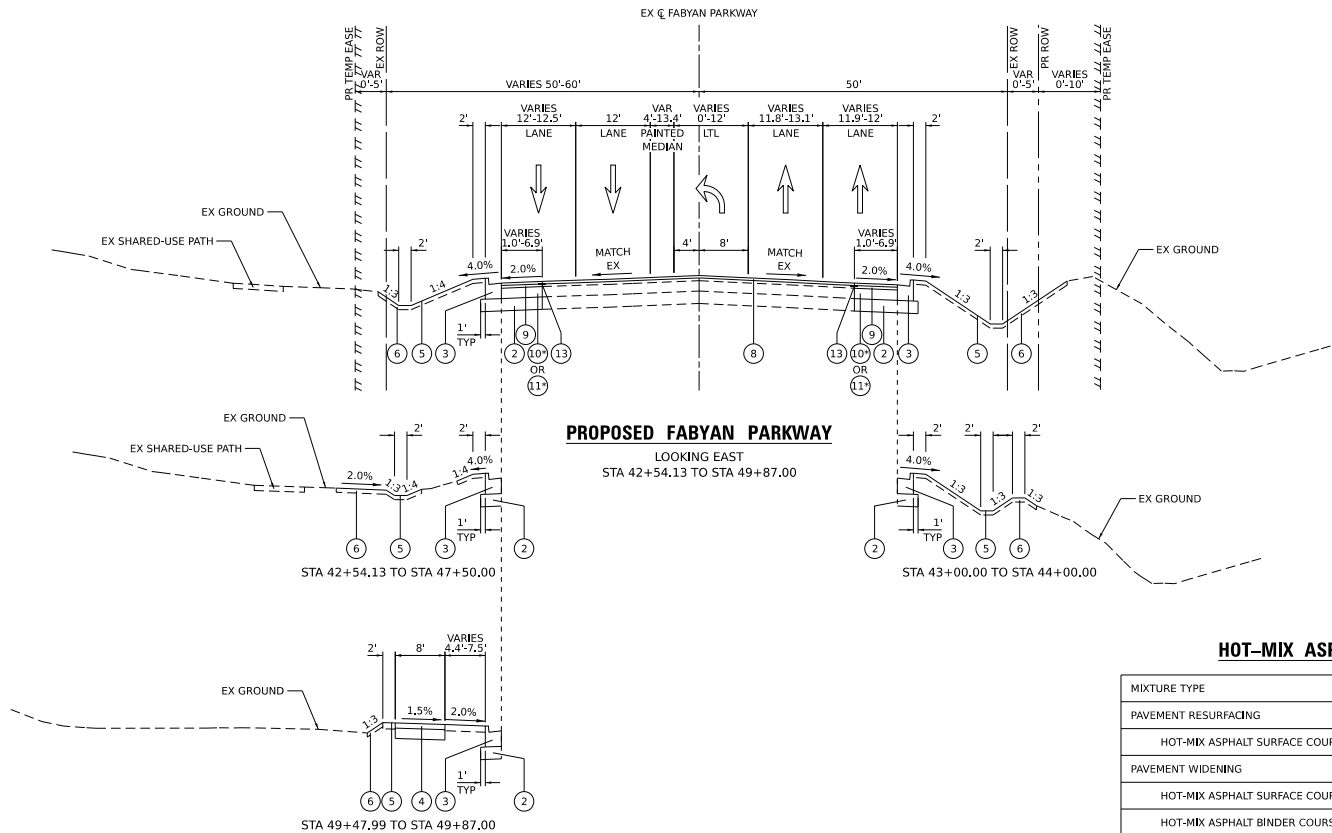
PAVEMENT MARKING AND SIGNING PLAN FABYAN PARKWAY

SCALE: 1"=20' SHEET 3 OF 6 SHEETS STA. 47+00 TO STA. 53+00

F.A.P. RTE.	SECTION	COUNTY	TOTAL SHEETS	SHEET NO.
363	21-00373-01-CH	KANE	120	70
CONTRACT NO.				
ILLINOIS FED. AID PROJECT				

PROPOSED LEGEND:

- ① PORTLAND CEMENT CONCRETE PAVEMENT (JOINTED), 10 ½"
- ② AGGREGATE SUBGRADE IMPROVEMENT, 12"
- ③ COMBINATION CONCRETE CURB AND GUTTER, TYPE B-6.24
- ④ SHARED-USE PATH
- (A) HOT-MIX ASPHALT SURFACE COURSE, IL-9.5, MIX "D", N50, 3"
- (B) AGGREGATE BASE COURSE, TYPE B 6"
- ⑤ SEEDING (SEE PLANS FOR CLASSES)
- ⑥ TOPSOIL EXCAVATION AND PLACEMENT (6" DEPTH)
- ⑦ NO. 6 TIE BAR AT 24" LONG, DEFORMED (EPOXY COATED) AT 24" CTRS. (TO BE INCLUDED IN THE COST OF CURB AND GUTTER AND PORTLAND CEMENT CONCRETE PAVEMENT)
- ⑧ HOT-MIX ASPHALT SURFACE COURSE, IL-9.5, MIX "D", N70, 1.5"
- ⑨ HOT-MIX ASPHALT BINDER COURSE, IL-19.0, N70, 2.5"
- ⑩ HOT-MIX ASPHALT BASE COURSE WIDENING, 10"
- ⑪ HOT-MIX ASPHALT BASE COURSE, 10"
- ⑫ CORRUGATED MEDIAN
- ⑬ STRIP REFLECTIVE CRACK CONTROL TREATMENT
- (+) REVERSE PITCHED



HOT-MIX ASPHALT MIXTURE REQUIREMENTS

MIXTURE TYPE	AIR VOIDS @ Ndesign	QMP
PAVEMENT RESURFACING		
HOT-MIX ASPHALT SURFACE COURSE, IL-9.5, MIX "D", N70, 1.5"	4% @ 70 GYR.	QC / QA
PAVEMENT WIDENING		
HOT-MIX ASPHALT SURFACE COURSE, IL-9.5, MIX "D", N70, 1.5"	4% @ 70 GYR.	QC / QA
HOT-MIX ASPHALT BINDER COURSE, IL-19.0, N70, 2.5"	4% @ 70 GYR.	QC / QA
HOT-MIX ASPHALT BASE COURSE WIDENING (HMA BINDER IL-19 mm), 10"	4% @ 70 GYR.	QC / QA
HOT-MIX ASPHALT BASE COURSE (HMA BINDER IL-19 mm), 10"	4% @ 70 GYR.	QC / QA
SHARED-USE PATH		
HOT-MIX ASPHALT SURFACE COURSE, IL-9.5, MIX "D", N50, 3"	4% @ 50 GYR.	QC / QA
TEMPORARY PAVEMENT		
HOT-MIX ASPHALT SURFACE COURSE, IL-9.5, MIX "D", N70, 2"	4% @ 70 GYR.	QC / QA
HOT-MIX ASPHALT BINDER COURSE, IL-19.0, N70, 8"	4% @ 70 GYR.	QC / QA
QMP DESIGNATIONS; QUALITY CONTROL/QUALITY ASSURANCE (QC/QA); QUALITY CONTROL FOR PERFORMANCE (QCP); PAY FOR PERFORMANCE (PFP)		

NOTES: THE UNIT WEIGHT USED TO CALCULATE ALL HMA SURFACE MIXTURE QUANTITIES IS 112 LBS/SQ YD/IN.
THE "AC TYPE" FOR POLYMERIZED HMA MIXES SHALL BE "SBS/SBR PG 76 -22" AND FOR NON-POLYMERIZED HMA THE "AC TYPE" SHALL BE "PG 64 -22" UNLESS MODIFIED BY RECLAIMED MATERIALS SPECIFICATIONS.

*PROPOSED HMA BASE COURSE WIDENING SHALL CONSIST OF WIDENING AREAS NOT EXCEEDING 6 FEET. PROPOSED HOT-MIX ASPHALT BASE COURSE FOR WIDENING AREAS EXCEEDING 6 FEET.

MODEL: Default
 FILE NAME: Z:\23\0001\DOT Phase 1B\Station and Median\Project19_Design\CD\Phase 1_CAD\Sheet\Station.mxd

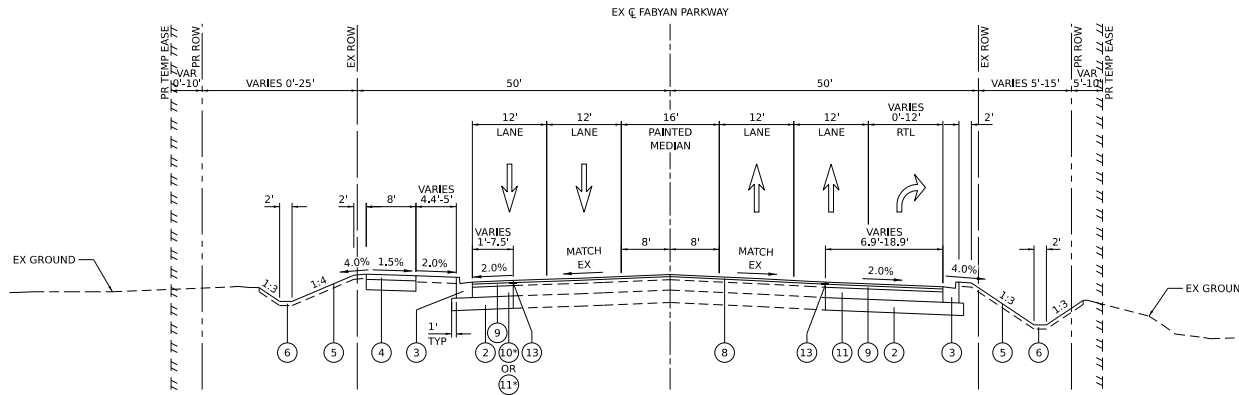


USER NAME	mb.patt	DESIGNED	- KSA	REVISED	-
DRAWN	- KSA	CHECKED	- ASO	REVISED	-
DATE	10/24/2025				

**KANE COUNTY
DIVISION OF TRANSPORTATION**

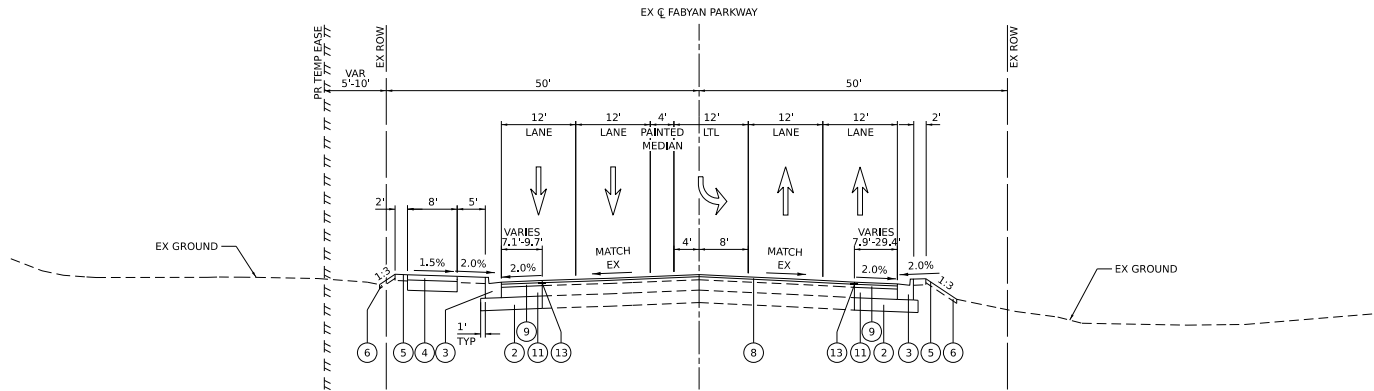
TYPICAL SECTIONS	
SCALE: N.T.S	SHEET 3 OF 7 SHEETS

F.A.P. SITE: 363	SECTION: 21-00373-01-CH	COUNTY: KANE	TOTAL SHEETS: 120	SHEET NO.: 11
CONTRACT NO.				
ILLINOIS FED. AID PROJECT				



PROPOSED FABYAN PARKWAY

LOOKING EAST
STA 49+87.00 TO STA 53+80.00



PROPOSED FABYAN PARKWAY

LOOKING EAST
STA 53+80.00 TO STA 55+94.04

PROPOSED LEGEND:

- ① PORTLAND CEMENT CONCRETE PAVEMENT (JOINTED), 10 ½"
- ② AGGREGATE SUBGRADE IMPROVEMENT, 12"
- ③ COMBINATION CONCRETE CURB AND GUTTER, TYPE B-6-24
- ④ SHARED-USE PATH
- Ⓐ HOT-MIX ASPHALT SURFACE COURSE, IL-9.5, MIX "D", N50, 3"
- Ⓑ AGGREGATE BASE COURSE, TYPE B 6"
- ⑤ SEEDING (SEE PLANS FOR CLASS)
- ⑥ TOPSOIL EXCAVATION AND PLACEMENT (6" DEPTH)
- ⑦ NO. 6 TIE BAR AT 24" LONG, DEFORMED (EPOXY COATED) AT 24" CTRS. (TO BE INCLUDED IN THE COST OF CURB AND GUTTER AND PORTLAND CEMENT CONCRETE PAVEMENT)
- ⑧ HOT-MIX ASPHALT SURFACE COURSE, IL-9.5, MIX "D", N70, 1.5"
- ⑨ HOT-MIX ASPHALT BINDER COURSE, IL-19.0, N70, 2.5"
- ⑩ HOT-MIX ASPHALT BASE COURSE WIDENING, 10"
- ⑪ HOT-MIX ASPHALT BASE COURSE, 10"
- ⑫ CORRUGATED MEDIAN
- ⑬ STRIP REFLECTIVE CRACK CONTROL TREATMENT
- (+) REVERSE PITCHED

*PROPOSED HMA BASE COURSE WIDENING SHALL CONSIST OF WIDENING AREAS NOT EXCEEDING 6 FEET. PROPOSED HOT-MIX ASPHALT BASE COURSE FOR WIDENING AREAS EXCEEDING 6 FEET.

MODEL: Default
 FILE NAME: Z:\234001 DOT Phase II Suffers and Mitigation\Project00_Design\CADPhase 2 CAD Sheets\Sheet4.mxd



USER NAME	mb.patt	DESIGNED	- KSA	REVISED	-
		DRAWN	- KSA	REVISED	-
PLOT SCALE	= 100.000' / 1" =	CHECKED	- ASO	REVISED	-
PLOT DATE	= 10/24/2025	DATE	- 10/24/2025	REVISED	-

**KANE COUNTY
DIVISION OF TRANSPORTATION**

TYPICAL SECTIONS

SCALE: N.T.S SHEET 4 OF 7 SHEETS STA. N/A TO STA. N/A

F.A.P. SITE:	SECTION	COUNTY	TOTAL SHEETS	SHEET NO.
363	21-00373-01-CH	KANE	120	12
CONTRACT NO.				
BILLINGS			FED. AID PROJECT	