



Planning & Land Protection Department Memorandum

TO: Benjamin Haberthur, Executive Director

FROM: Jennifer Rooks-Lopez, Director of Planning & Land Protection
Zach Tegge, Landscape Architect

RE: August 2025 Department Monthly Report

LAND ACQUISITION & PLANNING

Staff continues to work with the Land Acquisition Committee on the evaluation and acquisition of properties.

GRANT PROJECTS

MILL CREEK GREENWAY FOREST PRESERVE – OSLAD ARCHERY RANGE AND PRESERVE DEVELOPMENT

The District was awarded an Open space Land Acquisition Grant (OSLAD) in 2023 for improvements to the Mill Creek Greenway Forest Preserve. This project will develop the 62.5 acres purchased in 2016 with Land Water Conservation Funding (LWCF) by introducing resource-based recreation elements that include an outdoor archery range (first of the District's kind), interpretive nature trails, 60+ acres of prairie restoration, parking, restrooms, and design for a future linkage to a regional bike trail.

Project Updates:

- August 2025 – Earthwerks ordered the shelter, 3 cantilevered shelters (for archers) and the raised archery platform. Grading and site preparation will ensue in September.

BIG ROCK FOREST PRESERVE – RTP LIMESTONE TRAIL RESURFACING

In 2023, the District was awarded a Recreational Trail Program (RTP) grant to provide a trail connection between the Deer Valley property and Big Rock campground and to assist with the resurfacing of 1.57 miles of limestone trails at Big Rock Forest Preserve. Installed in 2014, sections of the limestone trails, especially in the woodland area are experiencing erosion and are in need of significant resurfacing. The RTP grant, will fund 80% of the project costs up to \$200,000.00.



- August 2025 - Obsidian began clearing brush and overhanging limbs for the new sections of mowed and limestone trails. Silt fence installed in key areas. Staff received a 6-month extension from the IDNR to account for the lost time with Evans and Son.

FITCHIE CREEK FOREST PRESERVE – RTP LIMESTONE TRAIL RESURFACING

On September 24, 2024 the District was awarded a Recreational Trail Program (RTP) grant to assist in the restoration of the existing limestone trail at Fitchie Creek Forest Preserve. Sections of the trail, especially that section within the wooded area, experience significant washout and flooding. The project will include addressing known drainage issues and resurfacing of the limestone trail. The RTP grant, will fund 80% of the project costs up to \$200,000.00.

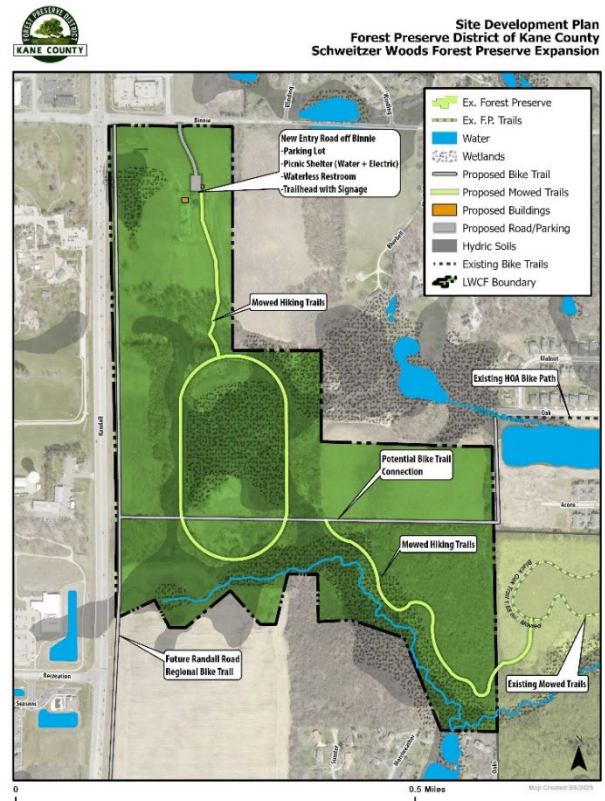
- Design and engineering are expected to begin in later summer. The project is expected to be bid in late fall of 2025/2026 with construction anticipated to begin in early summer 2026.



GRANT APPLICATIONS – PENDING

LAND WATER CONSERVATION FUND (LWCF) GRANT APPLICATION- SCHWEITZER WOODS EXPANSION PROJECT.

The Forest Preserve District of Kane County seeks funding assistance through the 2025 LWCF grant cycle to acquire an additional 122 acres of ecologically significant land adjacent to the existing Schweitzer Woods Forest Preserve. This expansion is aimed at protecting sensitive habitats, enhancing recreational opportunities, and ensuring long-term conservation of regional biodiversity. The proposed property lies immediately west of the current Schweitzer Woods Forest Preserve boundary and represents a rare opportunity to secure contiguous natural land in a rapidly urbanizing area of northern Kane County. The land is primarily composed of upland oak-hickory woodlands, open meadow, and seasonal wetlands, consistent with the native ecological profile of the existing preserve. Acquisition of this land will not only preserve these important habitats but will also expand passive recreational access and trail continuity for the public.



- August 2025- Acquisition grants through the Illinois Department of Natural Resources (IDNR), Open space Land Acquisition and Development (OSLAD) opened in July. While the state will only award acquisition funds through either the LWCF or OSLAD grants they encourage agencies to apply for both grants. Planning staff have started the application process to apply for acquisition assistance for the Schweitzer Woods expansion project. Applications are due September 30th.



MUIRHEAD SPRINGS FOREST PRESERVE - WILDLIFE OBSERVATION PLATFORM



Muirhead Springs Forest Preserve contains the first wetland mitigation bank created by the District. The volume and diversity of birds that have returned to this wetland is unrivaled by any previous projects

completed by the District. Multiple state and federal threatened and endangered species have been seen utilizing the site, and the word of this success is widespread amongst the “birding” community. As a result, birders have inundated the site hoping for glimpses of these rarities. This increase in visitors to the preserve has created issues with the establishment of the wetland plants required for the mitigation bank. The proposed wildlife-observation platform was included as a key project for the 2024 Land Acquisition & Preserve Improvement Referendum. It includes the construction of a raised observation deck that would be installed close to the water. It would allow visitors of differing abilities access to view

the birds and the wetland, without causing damage to the plant community and disturbing the birds' activities. The District plans to seek funding assistance from the Illinois Department of Natural Resources (IDNR) Open Space Land Acquisition & Development grant (OSLAD) which, if awarded, would reimburse up to \$600,000 for development.

- August 2025- Wight and District staff continued to develop plans for the wildlife platform for the OSLAD submittal. The above image shows the current plan that includes an ADA accessible elevated platform 13' high as well as a lower lever outdoor seating/classroom area. OSLAD applications are due September 30th.

CAPITAL PROJECTS

MUIRHEAD SPRINGS FOREST PRESERVE - WETLAND/STREAM MITIGATION BANK PROJECT

In 2017, the District began planning to restore over 200 acres of wetland at Muirhead Springs Forest Preserve as part of a wetland mitigation bank. V3 Companies was chosen and approved to be the consultant for this project. Staff and V3 met on-site to review the site conditions.



- June 2025 – V3 continues management of the plantings. Additional planting is expected in fall 2025.

BRUNNER FAMILY FOREST PRESERVE - TRAIL IMPROVEMENTS

The Brunner Family (709.22 acres) and Buffalo Park (28.46 acres) Forest Preserves total 737.92 acres, and are located in the northeast corner of Kane County. In 2024, the District completed improvements at the far north end of the preserve. This included a new shelter, bathroom, and trail connection from the northerly parking lot to shelter/bathroom parking lot, and a new sled hill. Improvements proposed for 2025-2026 include grading and drainage improvements along the older section of limestone trail and resurfacing the section of asphalt trail.

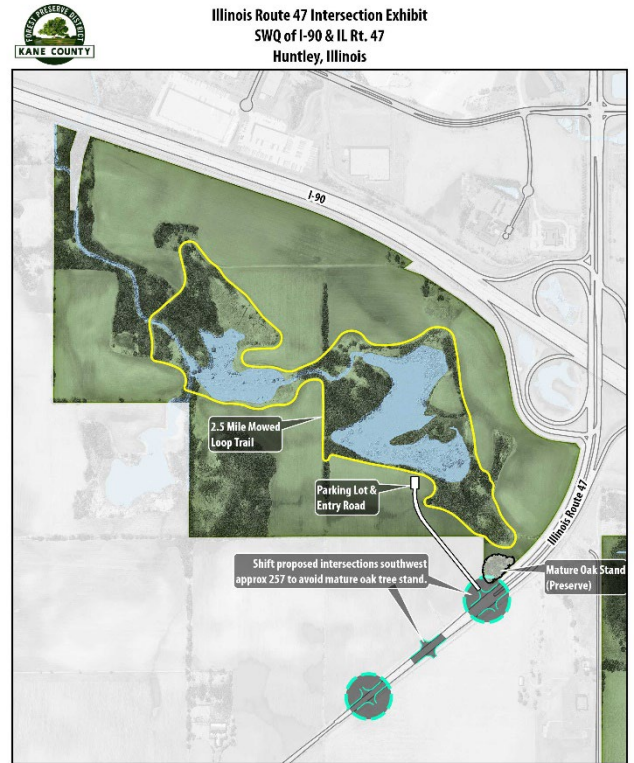


- August 2025 – Pre-construction meeting held on 8/6/25. Forest Preserve staff to layout beginnings and ends of asphalt sections for Obsidian. Construction expected to begin in September.

NEWLY ACQUIRED FOREST PRESERVE IN HUNTLEY – ROUTE 47 ACCESS

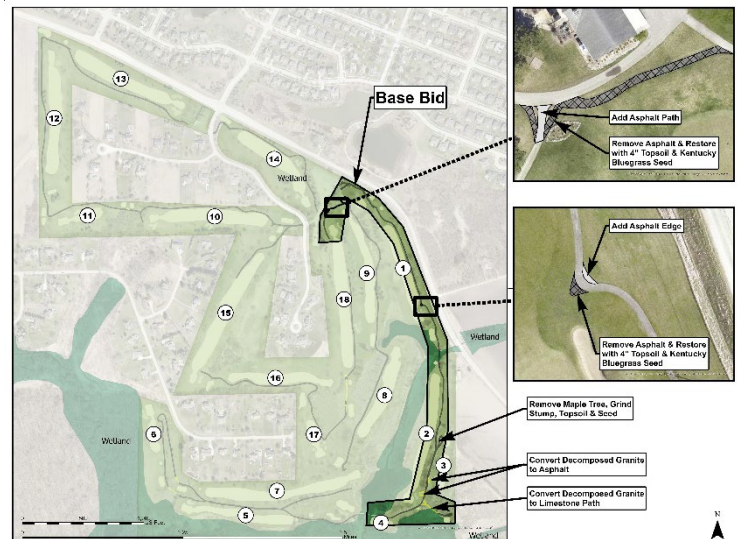
In 2024, the District acquired 298 acres in Huntley, at the southwest intersection of Illinois Route 47 (IL-47) and Interstate 90 (I-90). The property includes old oaks, a never-plowed sedge meadow, and more than 25 acres of prime waterfowl habitat. During the acquisition process, it was discovered that the approved entrance to the property is located at the edge of the eastbound I-90 exit ramp and IL-47. As part of the acquisition, an access easement on IL-47 was granted to the District by the adjacent property owner and the Village of Huntley. However, before a new entrance can be constructed, the District must also seek approval from IDOT.

- August 2025 – Project kick-off meeting held on August 5th. CBRE is working on concept plans to submit to IDOT for approval in late September/early October.



RESURFACING OF HUGHES CREEK GOLF CLUB CART PATHS AND NEW CART PATH CONSTRUCTION AT SETTLER'S HILL GOLF COURSE

The existing cart paths at Hughes Creek Golf Club were installed in phases from the late 1990's to the early 2000's and are showing significant signs of deterioration and failure in large sections. Just recently, half of hole #4 and up to hole #9 green were resurfaced. This project will focus on pulverizing-in-place and resurfacing cart paths near the clubhouse, and from hole #1 to the bridge at hole #4. Minor path adjustments will be made additionally near the clubhouse and at green #1. The additional surface course will add approximately 3" of height to the path, and will be backfilled and seeded to maintain a smooth transition. In between holes #3 and #4, certain portions of the cart path will be converted from decomposed granite to either limestone or asphalt.



The existing numbered layout at Settler's Hill Golf Course was designed so that golfers would have the option to return to a potential new clubhouse near the new driving range, after holes 9 and 18. This project focuses on adding key cart path connections so that golfers can return to the existing clubhouse after holes 9 and 18. This will involve building a new path from the current tee box at #6 and connect to current tee box #15. A new split path will be built just west of the clubhouse to allow golfers to drive up to the new #10 tee and return down the same path after the new #18.

- August 2025- the project was released for bid on July 22nd and opened on August 12th. The project is anticipated to be awarded at the September full commission and completed by the end of the year.



RUTLAND FOREST PRESERVE – RELOCATION OF EAKIN CREEK CROSSING

Rutland Forest Preserve is a large preserve located just west of Elgin on Big Timber Road. The area of the preserve north of Big Timber Road has been improved with picnic areas, parking, and trails. The area south of Big Timber Road has some areas of wetland along Eakin Creek, which flows through the site, however a majority of the site is currently farmed in the District's agriculture program. Currently, access to the agricultural field utilizes an easement with the adjacent land owner. The current crossing over the creek is very narrow for the wide farming equipment, and the supporting footings are beginning to fail. In 2017, WBK Engineering was retained by the District to review the existing conditions and recommend the best approach to address concerns. It was determined that the best long-term solution would be to abandon and remove the existing crossing, and construct a new wider structure further to the east. The new location would allow the District to eliminate the shared access easement with the adjacent land owner, to reduce risk and establish a future public access to the



southern half of Rutland Forest Preserve. The wider crossing will be safer for the current farmer and District maintenance vehicles it and will be designed in such a way as to accommodate pedestrians when the area is restored.

- August 2025 – Project kick-off meeting held on August 5th. WBK engineering began initial survey work to verify preferred site location.

MISCELLANEOUS UPDATES

- August 4th – Pre-bid meeting for the Settlers Hill Golf Course re-route and Hughes Creek resurfacing
- August 5th – Kick-off meetings for both IL Route 47 Access to the Huntley site and Eakin Creek Crossing.
- August 7th & 19th – Muirhead Springs Wildlife Overlook Concept reviews
- August 11th – 2 soil borings were taken along the Fox River Trail at Les Arends F.P., as part of the upcoming Fox Valley Park District Pedestrian Bridge project.
- August 13th – Planning staff attended the Steering Committee Meeting #1 for the East Dundee Bike and Pedestrian Plan.
- August 14th – Staff held a Zoom call with legal counsel to discuss the TCE Pipeline Easements and 2 key encroachment matters.
- August 20th – Staff met to discuss the Ecology Field Station project.
- August 27th – Illinois Prairie Path meeting at Mayor of Aurora's office
- August 29th – Meeting with Army Corp of Engineers, V3 and staff to review proposed change to mitigation banking instrument (MBI) to allow for a wildlife habitat credit. If approved the change would slightly increase the number of credits the bank could produce.