



# Kane County

## KC Energy and Environmental Committee

Government Center  
719 S. Batavia Ave., Bldg. A  
Geneva, IL 60134

### Agenda

BATES, Tarver, Allan, Kious, Roth, Strathmann, Young, ex-officios Pierog (County Chair),  
and Tepe (County Vice Chair)

---

<b>Friday, February 16, 2024</b>	<b>9:00 AM</b>	<b>County Board Room</b>
----------------------------------	----------------	--------------------------

---

1. **Call To Order**
2. **Roll Call**
3. **Remote Attendance Requests**
4. **Approval of Minutes: November 17, 2023**
5. **Public Comment (Agenda Items)**
6. **Environmental (J.Wollnik)**
  - A. ARPA Water Projects Update
7. **Sustainability (S. Hinshaw)**
  - A. Sustainability Updates
  - B. Climate Action Implementation Plan Updates
  - C. Kane County Coalition Update On the Climate Pollution Reduction Grant
  - D. **Resolution:** Authorizing Execution of Documents Related to the Climate Pollution Reduction Grant Award and Agreements for Kane County to Lead a Coalition Including Other Municipal and County Entities
  - E. Fabulous Fox! Water Trail Access Infrastructure Project
  - F. Tree Preservation Ordinance Training Opportunity
  - G. Kane County Tree Ordinance
8. **Recycling/Solid Waste (C. Ryan)**
  - A. 2024 Kane County Recycles Green Guide
9. **New Business**
10. **Chairs Comments**
11. **Reports Placed On File**



- 12. Executive Session (if needed)**
- 13. Public Comment (Non- Agenda Items)**
- 14. Adjournment**



STATE OF ILLINOIS )

SS.

COUNTY OF KANE )

**PRESENTATION/DISCUSSION NO. TMP-24-1782**

## ARPA WATER PROJECTS UPDATE



# ***Kane County Shallow Groundwater Sustainability Update***

**November 30, 2023**

**Daniel R. Hadley  
Cecilia Cullen**

***ISWS Groundwater Science Section***



**Illinois State Water Survey  
PRAIRIE RESEARCH INSTITUTE**



# Updates on all three components today

Assessment of Shallow Groundwater Sustainability in Kane County, IL – 2023 – Dec. 2025  
Community discussions and modeling to define sustainability methodology for the shallow aquifer and constrain metrics for long term sustainability of this system

Establishment of a Real-Time Monitoring Network in Kane County, IL – 2023 - 2026  
Using telemetry stations to monitor water levels throughout the county

Assessment of Shallow Groundwater Water Quality in Kane County, IL – Fall 2023  
Repeat study of water quality in Kane County's shallow aquifer and homeowner's wells.  
How has water quality changed since 2003? Since 2015?



# Assessment of Groundwater Sustainability in Kane County, IL



# Sustainability Analysis- Goals

## ***PHASE 1 August 2023 - July 2024***

Meet with individual municipalities to:

- Discuss their supply and water quality issues
- Review modeling inputs and results in an iterative fashion to support estimates of sustainable supply

Update the Kane County local model with:

- The last 20 years of shallow groundwater withdrawals
- The latest CMAP water use projections out to 2050
  - *We would like input from each community to verify/modify these*

Calibrate model to:

- Recent groundwater level data
  - At monitoring wells
  - IWIP reported water levels
  - Any other water levels submitted to us by municipalities
- USGS Stream gauge data

## ***PHASE 2 August 2024 - July 2025***

Estimate sustainable supply at a municipal level:

- Based on acceptable reductions of natural groundwater discharge to streams/head declines/other metrics
- Compare estimates of sustainable withdrawal rates (supply) to current and future demands

Evaluate chloride contamination and aquifer vulnerability

- Simulate chloride in the shallow aquifers by adding chloride along roadways and in developed areas through time
- Calibrate to any chloride data available from municipalities
- Create maps where there is high potential for chloride to enter the sand and gravel aquifer

## ***PHASE 3 August 2025 – Dec 2025***

- Contract report writing
- Publish series of web applications/story maps



# Sustainability Analysis- Progress

Community	Meeting Scheduled	Meeting Complete	Model Demands Review
Algonquin	x	x	
Aurora	x	x	
Batavia	x	x	
Burlington	x	x	
Carpentersville	x	x	
East Dundee			
Geneva	x	x	
Montgomery	x	x	
South Elgin	x	x	
Sugar Grove	x	x	
St. Charles			

- Have met with most of the municipal shallow groundwater users
- East Dundee in the works
- No word from St. Charles

- Other small users we may meet with:
  - Fermilab
  - Mill Creek Reclamation
  - Waubensee Community College
- Sandstone users we will reach out to see if any plans for shallow use
  - Elburn
  - Elgin
  - Gilberts
  - Hampshire
  - Huntley
  - Maple Park
  - North Aurora
  - Pingree Grove
  - Wasco Sanitary District
  - West Dundee



# Sustainability Analysis- What have we learned so far?

Community	Increase Shallow Use	Maintain Shallow Use	Decrease Shallow Use	
Algonquin		x		
Aurora	x			
Batavia		x		
Burlington		x		
Carpentersville		x		
East Dundee				Not Met Yet
Geneva				Reviewing
Montgomery			x	
South Elgin			x	
Sugar Grove		x		
St. Charles				Not Met Yet

- Aurora only community planning on drilling significant number of shallow wells, but not huge increase in overall withdrawals
- Most needs will be met with existing wells
- CMAP Projections
  - Aurora was underestimate by 2 mgd
  - Batavia was overestimated by 0.75 mgd
  - Geneva likely underestimated by 0.5 mgd
  - South Elgin underestimated by 0.25 mgd



# Sustainability Analysis- What have we learned so far?

Community	Cl- concern	PFAS concern	MIB/Geosmin Concern	Fe/Mn Concern
Algonquin	x	x		
Aurora	x	x	x	
Batavia	x			
Burlington				
Carpentersville				x
East Dundee				
Geneva				
Montgomery		x		x
South Elgin		x	x	
Sugar Grove	x	x		
St. Charles				

Not Met Yet

Not Met Yet

- Way to go Geneva and Burlington!
- Many municipalities have chloride data and have/will share
- Road Salt application data
  - Central Management Services (IDOT)



# Establishment of a Real-Time Monitoring Network in Kane County, IL



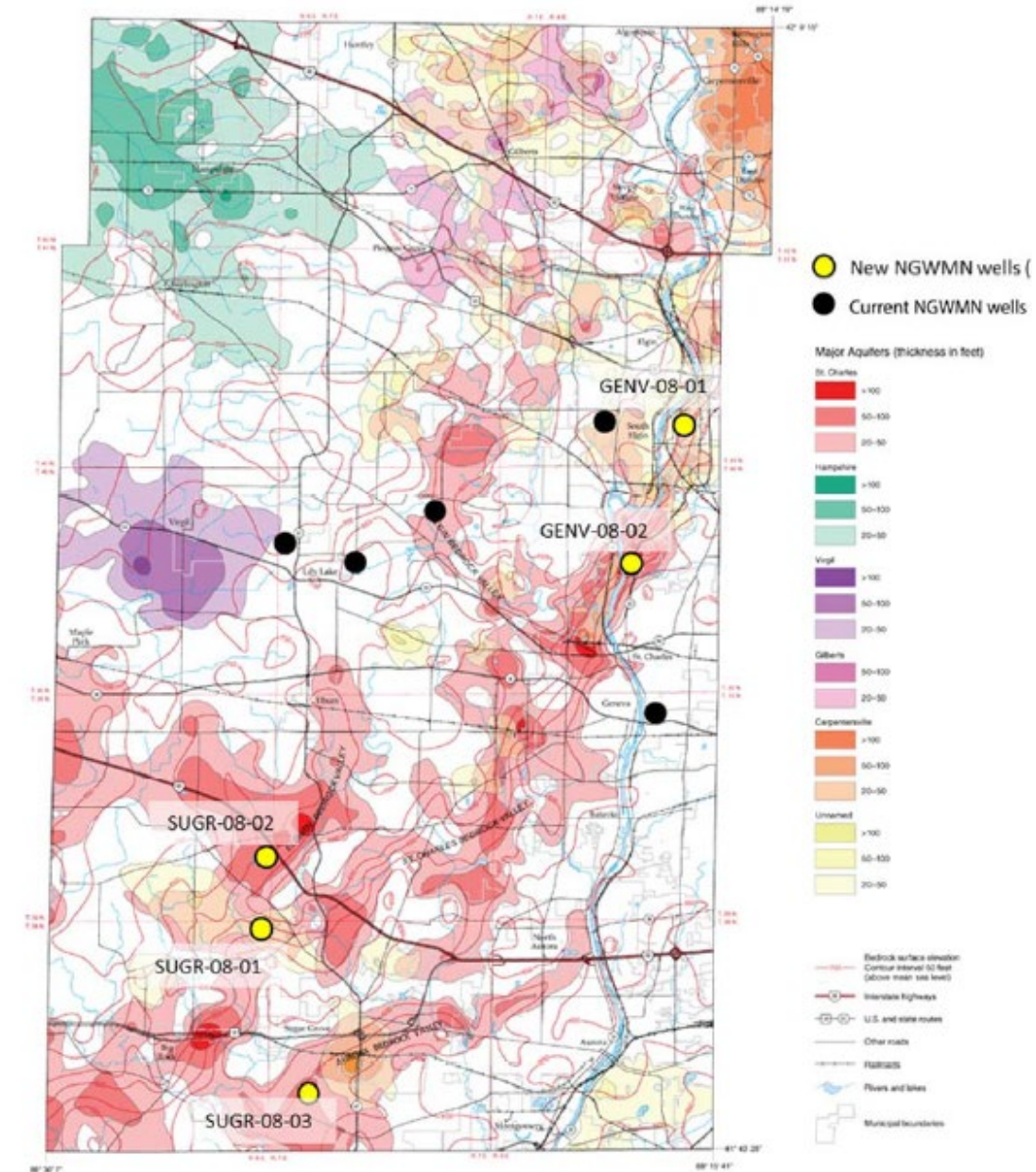
# Kane Observation Network- goals

- Install up to 15 sites (4-5 each year for next 3 years)
- Focus on the major bedrock valleys and other significant sand and gravel deposits
- Shallow bedrock wells too
- 2 sites will have continuous specific conductance (analog for  $\text{Cl}^-$ )

## PHASE 1 August 2023 - July 2024

### Install 5 sites

- Focus on St. Charles Bedrock Valley
- 4 wells already installed in 2017 under the National Groundwater Monitoring Network Program
  - a. Kenyon Farm
  - b. Fox River Bluff East
  - c. Sauer Kame
  - d. Alden Underwood Prairie
- Install monitoring equipment at additional site, likely one of the existing ISGS monitoring wells at the Nelson Lake Forest Preserve
- Identify the next 5 sites for Period 2
- *Will need help from communities to identify wells we can use*





# Kane Observation Network- Progress

- Nelson Lake well found, redeveloped, and sampled
  - Very productive
  - Center of the SCBV, thick sequence of sand
  - Will be a good monitoring well



*Nelson Lake*



*Sampling at Kenyon Farm*

- Kane County FP district permits filed
- Equipment ordered for 5 sites (have most of it in hand)
- All 5 SCBV monitoring wells have now had water quality sampled
  - Background conditions
  - Chloride/conductance monitoring
- Equipment install in early spring



# Assessment of Shallow Groundwater Water Quality in Kane County, IL



# Contaminants of Concern in the Shallow Aquifer

## Human Derived Contaminants (Anthropogenic)

- Chloride
- Total Dissolved Solids (TDS)
- Nitrate
- PFAS

## Naturally Occurring Contaminants (Geogenic)

- Arsenic
- Iron
- Manganese
- Sulfate

*Water Quality is important aspect of health of an aquifer for community supply*

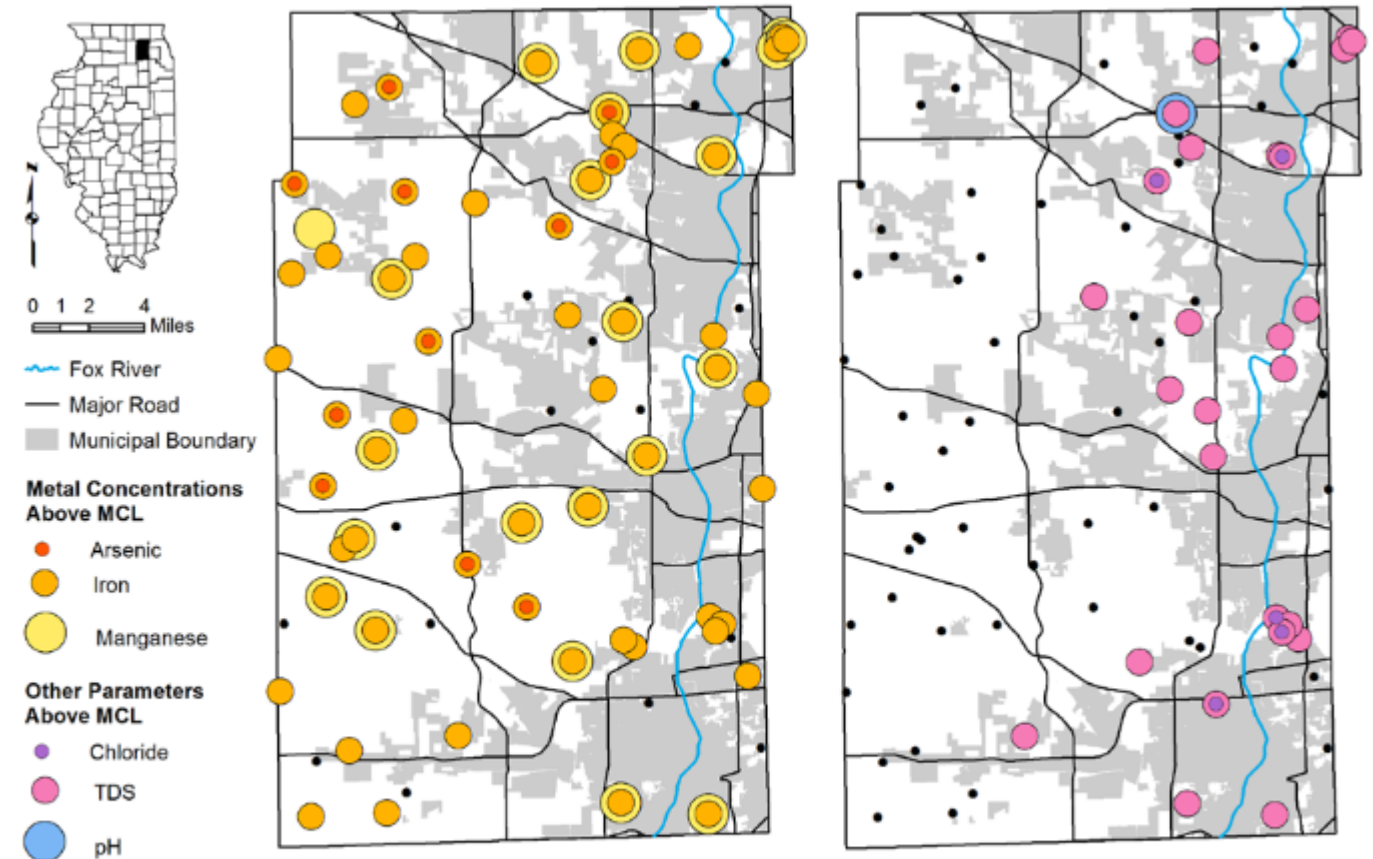


Figure 15. Chemical contaminants above the primary (As) or secondary MCL of sampled wells. Wells with no contaminants exceeding MCLs indicated by small black circles.

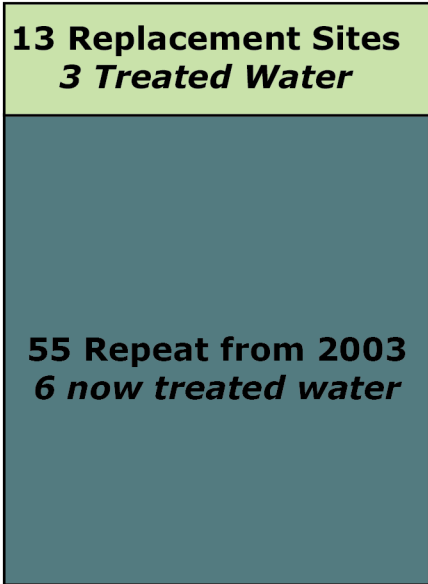


# Sampling effort complete

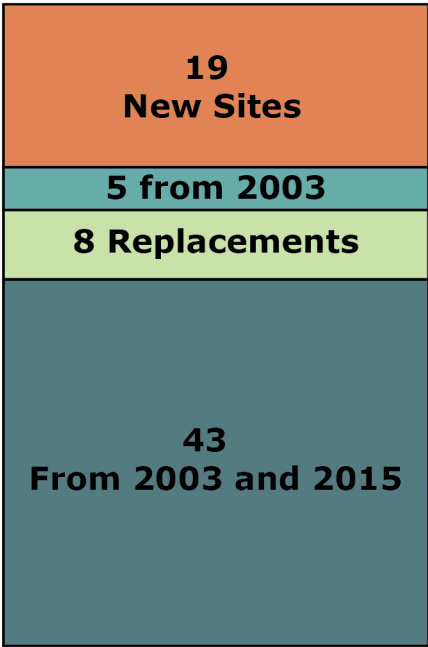
- 75 samples collected, distributed for 25 in each third of the county: west, east, central
- Over half of sites were sampled in 2003 and 2015.
- 6 of the new sites sampled were monitoring wells, 2 in each third of the county



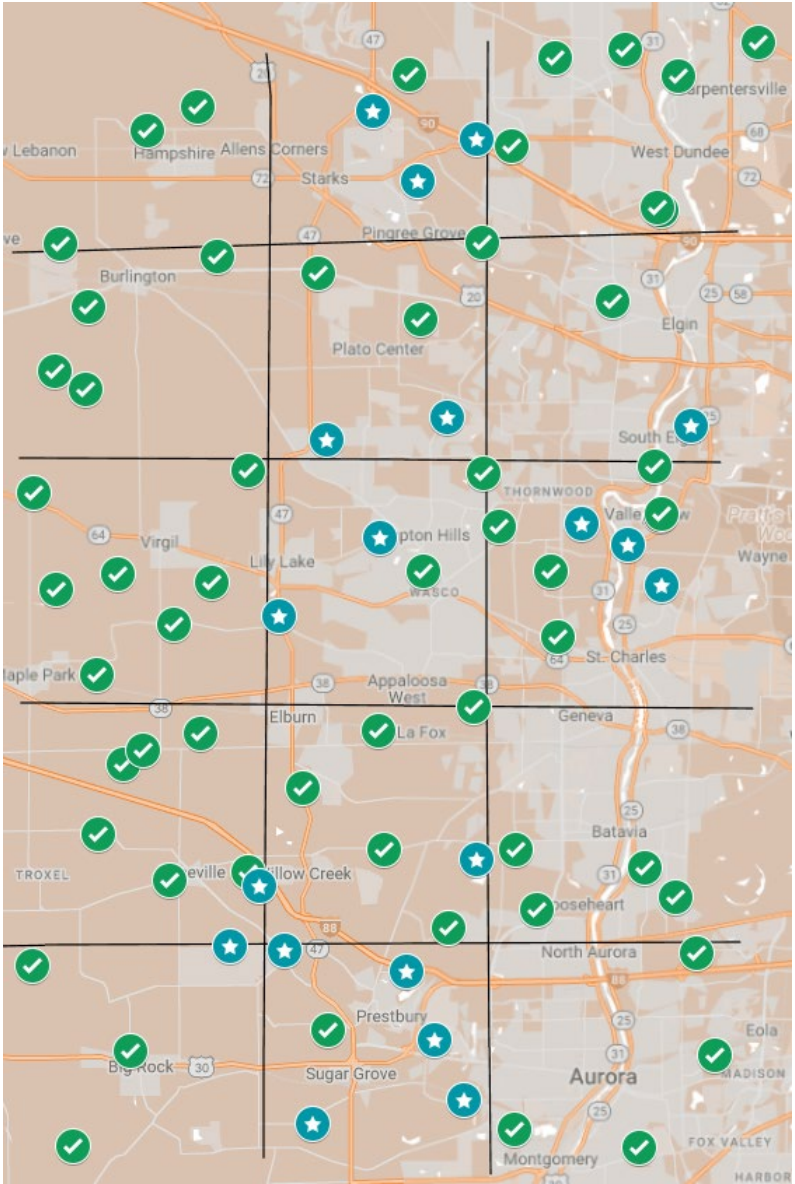
**2003**  
**75 Samples Total**



**2015**  
**68 Samples Total**



**2023**  
**75 Samples Total**





# Current Status

- Bacterial analyses are back
- Field results are suggestive that chloride may not have increased between 2015 and 2023 and much as it increased from 2003 to 2015
- The rest of water quality results are pending



*Walt Kelly, study originator, collecting the last 2023 Kane County sample*



# Bacterial Analyses Results

In 2023

- 69 samples tested (all sites except the monitoring wells)
- 20 tested positive for total coliform
- 2 tested positive for E coli bacteria presence. Well owners were notified.

In 2015

- 68 samples tested
- 10 wells tested positive for total coliform
- 4 wells had fecal bacteria above detection

In 2003

- 74 wells tested
- 7 tested positive for total coliform



Field results are suggestive that that rate of chloride increase in an aquifer is slowing down compared to the 2003 to 2015 rate

- Recent paper on chloride in Ontario shallow aquifers shows that reduced applications of winter deicers on the surface manifest in reduced rates of chloride accumulation
- We are interested in community, county, and state data on winter deicer application rates
- Once we have chloride data back, we will be able to compare chloride accumulation rates from 2003 - 2015 to 2015 to 2003 throughout the county

*Thank you, Kane County communities for discussions on your groundwater quality!*



# Next Steps

- Start Writing Water Quality Contract Report-Winter/Spring 2024
- Install the 5 SCBV telemetry stations- Early Spring 2024
- Data Review
  - Send emails to sandstone communities
  - Compile all water levels received from communities
  - Compile chloride data and other water quality data from communities
  - Finalize projections of water use
- Modeling (now and ongoing)
  - Model-ready datasets (use and calibration targets)
  - Convert model to Python scripting framework (repeatable workflow)
  - Calibrate model to updated water levels
  - Determine changes in natural groundwater discharge to streams
- Meetings:
  - Follow-ups with individual communities as needed
  - Progress meeting in spring
  - Summer 2024, reconvene with entire group to discuss sustainability metrics



STATE OF ILLINOIS )  
COUNTY OF KANE ) SS.

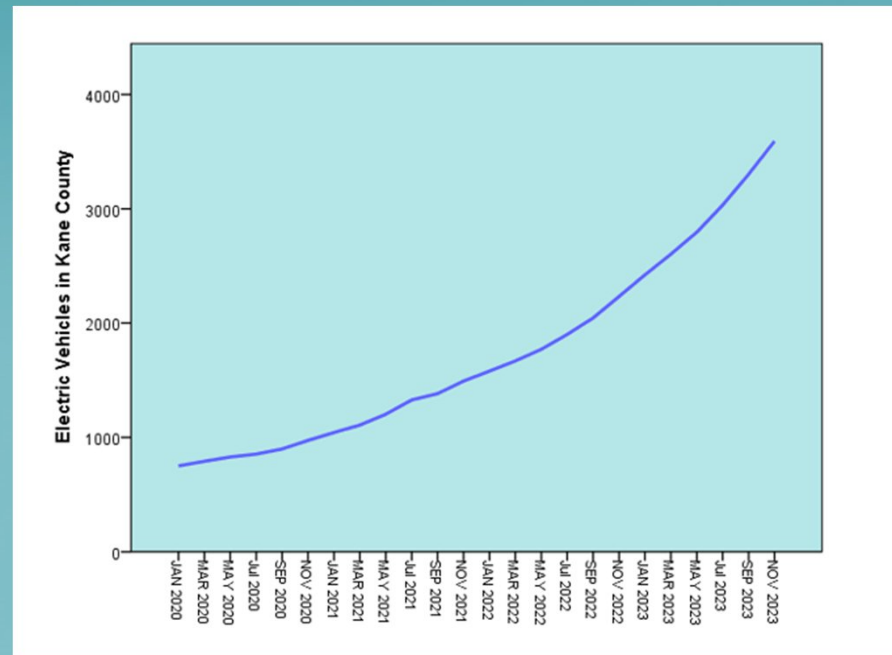
**PRESENTATION/DISCUSSION NO. TMP-24-1794**

**SUSTAINABILITY UPDATES**



# Sustainability Update

Energy and Environmental Committee Meeting, Friday, Jan 12<sup>nd</sup>, 2024





Department of Energy



## Energy Efficiency and Conservation Block Grant Program



Technical  
Assistance  
Rebate



Equipment  
Rebate



# Technical Assistance Rebate - EV Charging for the Community

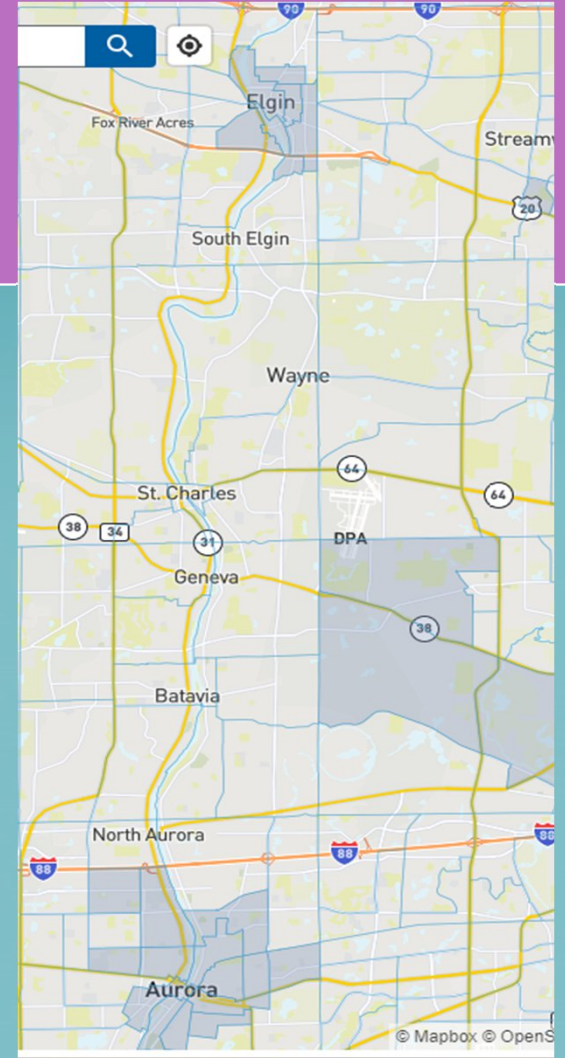
- \$236,000
- Technical assistance to develop an EV Charging Infrastructure Plan
- The assistant will help tailor the plan to engage stakeholders to select promising locations
- Outreach and hold public events to help better understand the technology





# Technical Assistance Rebate

- 40% needs to focus on Environmental Justice Communities
- The other 60% will focus on technical assistance on rural areas and areas along I-90 and I-88





# Equipment Rebate

- \$50,000
- Update lighting in the parking lot of the Judicial Center



## Parking Lot & Drive Lane Area Light Replacement

### Overview of Lighting Replacement

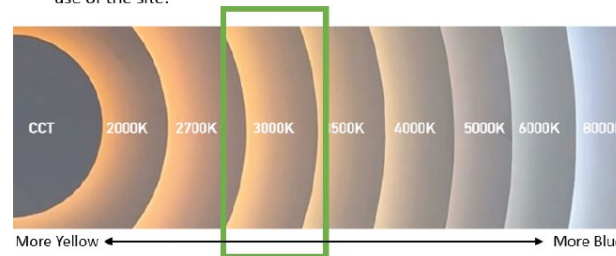
- New parking lot and drive lane area light layout to improve overall illumination of the pavement
  - 2.3 FC Average
  - LED
- Dark Sky Compliance
  - No up-light component on pole lights to decrease sky glow
  - 3000K Color Temperature of Light
  - Low Glare
- Area lights will automatically turn On/Off at the presence of daylight. During nighttime hours, area lights will also dim to 50% output when the area the light serves is un-occupied. Raising the illumination back to 100% when movement from a person or car is present. Further decreasing the overall energy use of the site.



### Area Pole Light Layout Comparison

	Quantity of Poles	Quantity of Heads	Wattage
Existing Layout	117	158	~32,000
New Layout	118	118	26,800
Total	+1	-40	-5,200

- This reviews the preliminary plan for pole lights only
- Wattage is for existing layout based on provided documentation for most recent re-lamping that occurred on campus but may not reflect the lamps that are currently installed at the site.
- Existing Layout does not currently meet the 2.3FC average which does play a role in the wattage for the new layout being relatively similar to the existing.





# Tax credits from IRS

- **Alternative Fuel Vehicle Refueling Property Credit**
  - qualified refueling property subject to depreciation equals 6% with a maximum credit of \$100,000 for each single item of property. For low-income areas only
- **Energy efficient commercial buildings deduction - For the lighting project at JC**
  - The cost of the installed property **or**
  - The savings per square foot calculated as:
    - \$0.50 per square foot for a building with 25% energy savings
    - **Plus** \$0.02 per square foot for each percentage point of energy savings above 25%
    - **Up to** a maximum of \$1.00 per square foot for a building with 50% energy savings





# Another potential grant

- Environmental and Climate Justice Community Change Grants Program
  - Strategy 1: Green Infrastructure and Nature-Based Solutions
  - Strategy 3: Energy-Efficient, Healthy, and Resilient Housing and Buildings
  - Strategy 5: Community Resilience Hubs





Sarra Hinshaw Ph.D  
Sustainability Manager  
Kane County Environmental & Water Resources Department  
Ph: 630-208-8665





STATE OF ILLINOIS )  
COUNTY OF KANE ) SS.

**PRESENTATION/DISCUSSION NO. TMP-24-1798**

**CLIMATE ACTION IMPLEMENTATION PLAN UPDATES**



# Climate Action Implementation Draft – a short highlight of different sections and key points

## Kane County's Climate Action Implementation Draft Plan Community Meeting



Transportation Health and Safety Greenspace Water

Energy Waste Management Agriculture Economy

This Climate Action Implementation Plan includes an implementation framework designed to achieve County-wide goals for GHG reduction and climate adaptation and resilience.

Join us to hear about our new action plan. We want your feedback and opinions. Your input matters for the future of Kane County.

**How you can review the Draft Plan:**

Review the Draft Climate Action Implementation Plan on the Plan's website by scanning the QR code to the right or visiting the URL listed below:

<https://palebluedot.ilc/kane-climate-action>

Feb. 6<sup>th</sup> - Geneva Public Library, 227 S 7th St. Geneva, 6:00-7:30 pm

Feb. 7<sup>th</sup> - Gail Borden Public Library, 270 N. Grove Ave. Elgin, 6:00-7:30 pm

Feb. 21<sup>st</sup> - Santori Library, 101 S River St. Aurora, 5:30-7:00 pm

Feb. 24<sup>th</sup> Workshop - Hawthorne Hill Nature Center, 28 Brookside Dr. Elgin, 11:00-2:00 pm



## How you can review the Draft Plan:



Review the Draft Climate Action Implementation Plan on the Plan's website by scanning the QR code to the right or visiting the URL listed below:



<https://palebluedot.llc/kane-climate-action>





## Buildings and Energy

Click here to return to TOC

### Key Metrics

#### CURRENTLY IN KANE COUNTY

**62.7%**  
of community-wide GHG emissions in 2019 from buildings and energy

**5,487,181,100**  
kWh of electricity used in 2019

**374,609,012**  
Therms of natural gas used in 2019

**46.5%**  
of all homes were built before 1980

**59.3%**  
of renter-occupied homes were built before 1980

### Sector Overview

### Goals



**-26.3%**  
drop in GHG emissions (metric tons)



**25%**  
renewable energy (on-site and purchased)



**-12%**  
less electricity use



**-12%**  
less on-site fuel combustion

2019	4,396,045 MT	3 Million kWh	5.5 Billion kWh	375 M Therms
2030 Targets*	3,239,746 MT	275 Million kWh	4.8 Billion kWh	330 M Therms

\*Includes impacts associated with population increases. See Appendix A for greenhouse-related climate action plan development which supported planning team in goal finalization.

Building energy use is a major contributor to greenhouse gas (GHG) emissions. Greenhouse gas emissions from this sector come from direct emissions such as fossil fuels burned on-site for heating or cooking needs—as well as indirect emissions such as fossil fuels burned off-site to supply the building with electricity. Building energy use contributes significantly to greenhouse gas (GHG) emissions. Direct emissions include fossil fuels burned on-site for heating or cooking needs. Indirect emissions can consist of fossil fuels burned off-site to supply the building with electricity. A building's design and maintenance impact how much GHG it emits. Increasing energy efficiency can help reduce GHG emissions, increase comfort, and result in significant cost savings for homes and businesses.

#### Residential Energy

The residential sector in Kane County consumes nearly 1,619 million kWh annually. This is equal to 3,041 kWh per capita, 118% of the metro area average. The sector also consumes over 217 million therms of natural gas annually, 119% of metro area per capita average.

#### Commercial / Industrial Energy

This sector consumes over 3,868 million kWh, equal to 17,740 kWh per job—more than 145% of metro area average—and 157 million therms of natural gas annually, 98% of metro area average.



**82%**  
of survey respondents support one or more strategy advancing renewable energy in Kane County.

### Comm Input

#### Saving Money and Reducing Emissions Through the Inflation Reduction Act

The 2022 Inflation Reduction Act offers tax credits to promote cleaner energy adoption, combat climate change, and potentially reduce energy expenses for many. It includes credits like the used electric vehicle credit (up to \$4,000), energy-efficient home improvement credit (up to \$1,200 annually), and residential clean energy credit. These provisions stabilize energy costs, boost savings, and create clean energy jobs.

The Act complements existing programs, enhancing the benefits of clean energy adoption, with a focus on helping disadvantaged communities through outreach and support. These credits cut costs, stimulate quality clean energy jobs, and ensure equitable distribution of benefits.



## Buildings and Energy STRATEGIES

## Buildings and Energy

### Sector Strategies with Summary description

#### Strategy BE 1

Improve total Community wide residential, commercial, institutional, and industrial building energy efficiency by 12% for electricity and natural gas by 2030.

The US Energy Information Administration reports that homes constructed after 2000 consume 15% less energy per square foot compared to those built in the 1980s, and 40% less than those pre-1950. This illustrates the considerable scope for enhancing energy efficiency by retrofitting older homes with modern technologies. There are over 84,000 homes built before 1980 throughout the county. Making up 56.4% of owned and 59.3% of rented homes, upgrading the energy efficiency of these older structures could significantly curb community energy use and reduce energy costs for households.

#### Strategy BE 2

Increase adoption of high performance building construction technology, achieving 1% Net Zero households and commercial properties community wide by 2030. (Net Zero buildings are energy efficient buildings that produce as much energy on-site as they consume in a year)

High-performance buildings, 30% more energy-efficient than standard ones, bring many benefits. They cut energy use, carbon emissions, and costs. Advanced materials reduce maintenance. Better indoor conditions boost well-being and productivity. Net Zero buildings, part of this group, use minimal energy and produce on-site power, often via renewables like solar or wind. This enhances resilience and saves money, making them ideal for a sustainable future.

#### Strategy BE 3

Achieve 10% residential and commercial and industrial building "fuel switching" from on-site fossil fuel combustion to electrification by 2030.

The US Census shows most County homes use natural gas (87.9%) or electricity (10.9%) for heating. As the regional electric grid expands its renewable electricity share, reducing and ultimately eliminating on-site fossil fuel use becomes increasingly important. This is where building heating fuel switch to electrification or other zero emission fuels plays a key role. This process involves replacing traditional fossil fuel-based heating systems with electric ones. By doing so, it not only reduces carbon emissions but also improves energy efficiency. Moreover, this transition is a central requirement to achieving regional GHG reduction goals in the building sector.

#### Strategy BE 4

Increase renewable energy to 25% of community-wide residential, commercial, institutional, and industrial building electric use by 2030. (on-site and green source purchase)

Anticipated GHG reductions from grid electricity shouldn't divert attention from consumer-driven renewable energy choices for meeting GHG reduction goals. Those property owners who are unable to install solar panels can purchase renewable energy from utilities or community solar programs to achieve Net Zero electricity, contributing to a cleaner grid. For properties suitable for solar, on-site renewables bring not only GHG cuts but also cost savings and energy resilience. These benefits emphasize the significance of more renewable energy use for the county's sustainable future.

#### Strategy BE 5

Increase resilience of community-wide buildings to potential impacts of climate change. (impacts include increased flooding risk, increased extreme weather events, and increased extreme temperature events)

By 2100, Kane County can anticipate an increase of up to 15% in total annual precipitation and an increase in heavy precipitation events of up to 30%. The timeframe between rains is expected to continue to increase, meaning dryer ground conditions and increased stormwater runoff. In addition, the county can anticipate an increased risk of extreme temperature and weather events. In anticipation of these impacts, actions to increase the resilience of our homes, businesses, and institutions is a central need to ensure climate resilience.

#### Strategy BE 6

Improve total government building energy efficiency by 15% by 2030. (electricity and natural gas, including water and wastewater infrastructure)

#### Strategy BE 7

Achieve 25% government building thermal "fuel switching" from on-site fossil fuel combustion to electrification by 2030.

#### Strategy BE 8

Increase renewable energy to 100% of government building electric use by 2030. (on-site and green source purchase)  
Local governments can lead in energy efficiency, fuel switching, and renewables, cutting GHG emissions and setting adoption examples.

Go to Implementation and Actions for supporting actions.

Go to Implementation and Actions for supporting actions.

Go to Implementation and Actions for supporting actions.

Go to Implementation and Actions for supporting actions.

Go to Implementation and Actions for supporting actions.

Go to Implementation and Actions for supporting actions.

Link to  
Actions  
(not active yet)

3-5

Kane County CAIP

Kane County CAIP

3-6



## Detailed Actions by Sector Strategy

Link back to  
strategies  
(not active yet)

## ACTIONS

### Transportation and Land Use

#### Strategy TL 1

Decrease community wide Vehicle Miles Traveled (VMT) by 5% by 2030.

- TL 1-1 Continue sidewalk and bikeway construction and education projects that promote active transportation in alignment with the 2023 Kane County Bike and Pedestrian Plan.
- TL 1-2 Conduct, or hire a consultant to conduct a neighborhood walk audits to ensure streets are free from any hazards and ADA accessible.
- TL 1-3 Explore "market development" strategies, which would remove barriers for small-scale retail and essential services like daycare centers, especially those located within areas which would promote and support walk, bike, and alternative transportation access.
- TL 1-4 Make car sharing convenient and affordable by reducing sales tax on car sharing services.
- TL 1-5 Support the efforts of special service districts to improve streetscapes and encourage walking and bicycling
- TL 1-6 Support a new state multimodal transportation funding source for transit, bicycle and pedestrian services and facilities. Advocate for including provisions that prioritize transit and multimodal designs for facilities
- TL 1-7 Continue to support the development of neighborhoods with walkable and bikeable access and connections to services, nature, transit and destinations, locally and across the community, by:
  - a) Establish and implement a Healthy Connected City strategy to bring complete neighborhoods to 80% of the community's population by 2035.
  - b) Completing a Comprehensive Plan with supportive maps, goals, policies and projects.
- TL 1-8 Improve design and development standards for multifamily buildings and driveways to create more pedestrian-friendly environments. This could include landscaping and open space standards, building design and parking maximums and design standards.
- TL 1-9 Support centrally located and regionally significant industrial areas that may provide for future intermodal facilities and also enable efficient local deliveries.
- TL 1-10 Implement a large-scale public bike sharing program to support continued population and employment growth and mobility within community. Explore opportunities to support bike sharing of cargo bikes. Review programs adopted by other communities to support program design.
- TL 1-11 Collaborate with school districts to help more students attend schools near their homes by expanding the Safe Routes to Schools Program for community schools. This involves working closely with schools to create and put into action plans that promote safe walking and biking to school.

Return to Transportation and  
Land Use section.

10-5

Kane County CAIP

### Transportation and Land Use

## ACTIONS

#### Strategy TL 2

Increase public transit commuter ridership from 2.24% to 6.5% by 2030.

- TL 2-1 Use regulatory and voluntary tools to promote affordable and accessible housing development along existing and planned high capacity transit lines, frequent transit routes and in opportunity areas identified by planning department. Include identification of affordable housing areas within all future regional planning projects and evaluate needs for safe, direct bicycle and pedestrian access to transit in areas near affordable housing.
- TL 2-2 Link parking requirements to mode share targets.
- TL 2-3 Collaborate to rapidly deploy public transit solutions such as bus rapid transit (BRT) or light rail to community hot spots, which could be areas with high congestion, populous areas with currently limited access to public transit, or areas with issues that increase single-occupancy vehicle (SOV) use within the community. Require land developers to donate land towards these projects.
- TL 2-4 Expand access to transit including implementation of a community-wide EcoPass (unlimited rides within community) and expansion of Bus Rapid Transit routes.
- TL 2-5 Invest in infrastructure that supports bus operations and more comfortable and welcoming bus stop environments.
- TL 2-6 Incorporate feedback of low-income and transit-dependent populations in planning and build-out of these lines to increase transit options and quality of life
- TL 2-7 Collaborate with partners including IDOT, CTA, Metra, public entities, and local governments to implement and expand Intelligent Transportation Systems strategies to improve multi-modal travel times and user experience.
- TL 2-8 Establish a Transportation System Plan which incorporates
  - a) Transportation-related carbon reduction and vehicle-miles-traveled reduction targets in line with this plan.
  - b) A policy that supports criteria on climate, equity, economic benefit, health, safety and cost effectiveness for project evaluation, development and funding decisions and for performance monitoring.
  - c) Improved city and regional level of service standards to reflect bicycle, pedestrian and transit needs and urban congestion thresholds.

Return to Transportation and  
Land Use section.

10-6



# What can you do?



**What You Can Do**

You can support the goals of the Waste Management section of this climate action implementation plan as an individual, household, or a business. Here are just a few things you can do:

---

  
**Increase Organics Diversion**

- Compost food and yard waste.
- Drop off yard and organic waste at a Kane County [drop off site](#), or participate in an organics collection program.
- Aim to eliminate food waste. Eat existing fridge contents first. Plan meals and shop accordingly. Learn more [here](#).

---

  
**Reduce what you throw away**

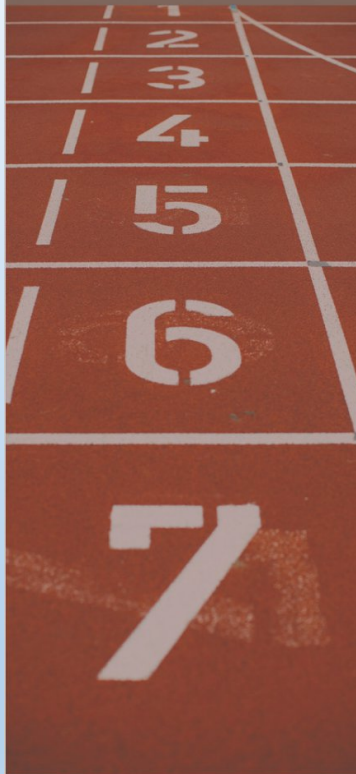
- Use LEDs and rechargeable batteries to reduce eWaste.
- Upgrade, donate, or recycle old electronics.
- Use reusable bags for all shopping.
- Swap single-use plastics for durable, reusable alternatives.
- Choose items with no, minimal, compostable, or fully recyclable packaging.
- Repair or donate reusable or repairable items instead of discarding.





## Implementation and Actions

Click here to return to TOC



10-1

The first few years after plan adoption are critical to its success. Establishing roles and identifying funding will help establish the implementation phase of the plan and ensure the community is on track to achieve its goals. This plan includes robust goals for significant greenhouse gas (GHG) emission reductions and addressing climate resilience. This vision requires commitment and integration of the CAIP into local government operations, functions, and services. Ultimately, however, successful implementation of this Climate Action Implementation Plan will require the support and commitment of Kane County public entities, residents, and businesses.

### Implementation is For Everyone

The causes and impacts of climate change are broad. Solving it must be equally broad. Some actions will need to be led by local government elected officials or departments while others can only be supported by local government and will require engagement by the business community. In addition, there are steps that households and individuals can take to make an impact. Ultimately, achieving the visionary goals outlined in this plan will require engagement and a sense of responsibility not only by the leadership and staff of Kane County and municipal governments, but by the community as well.

**Climate Action Implementation is a Journey**  
Starting a decade-long Climate Action Implementation Plan (CAIP) entails uncertainties, especially regarding future technologies, costs, and regulations, making a full initial cost-benefit analysis impracticable. This journey will require rolling adjustments to actions that guide Kane County towards its climate goals. Actions which may modify/create policy or ordinances or which may have expenses incurred should be anticipated to go through appropriate local government process for approval.

Kane County CAIP

## Strategies and Actions for Organizing for Implementation

### STRATEGIES

#### Strategy 11

Organize for climate action implementation.

Integrating climate actions into day-to-day operations is central to successfully implementing the plan and achieving long-range climate goals. Establishing an implementation team with participation from all organizational departments, assigning staff to lead or participate in actions, and establishing a process for the review of implementation progress can all help climate action become integral to operations.

Go to Actions for supporting actions.

#### Strategy 12

Facilitate and collaborate with external support needed for climate action implementation.

Climate Action Plans with community-wide goals require awareness by and participation of stakeholders throughout the community. Meanwhile, many communities throughout Kane County and the region have established climate action goals and are seeking to implement similar actions for their communities. This means that plan implementation needs to be, and can be, collaborative.

Establishing coordinated community communication campaigns, organizing a cross-jurisdictional collaboration team to facilitate action implementation with other local governments and public entities, and organizing volunteer efforts are all key opportunities to broaden implementation support.

Go to Actions for supporting actions.

Kane County CAIP

### ACTIONS

Detailed actions supporting the implementation of all strategies for each Sector included in this plan are on the following pages.

Click the double arrow symbol at the bottom of each action list page to return to the plan sector.

#### Implementation Support Tools

To support implementation of this plan, the paleBLUEdot team has created the following tools:

#### Implementation and Monitoring Matrix

An excel-based tool for tracking action lead assignments, identification of potential community advocates and resources, and action implementation status and progress monitoring.

#### Example Climate Action Policies and Ordinances

Example policies and ordinances supporting some of the strategies and actions included in this plan: <https://palebluedot.ilc/kane-example-cap-policies>

#### Example Policy Alignment Memo

For use in reviewing all public entity policy items against CAIP goals: <https://cutt.ly/7wDCSQqZ>

#### Example Internal Implementation Team Agendas

For support in establishing internal implementation teams in public entities: <https://cutt.ly/5wDCDzv>

10-2

## Support Tools:

Action Matrix

Example Policy Database

Implementation Team Agendas

Policy Review Memo Template



STATE OF ILLINOIS )  
COUNTY OF KANE ) SS.

**PRESENTATION/DISCUSSION NO. TMP-24-1903**

**KANE COUNTY COALITION UPDATE ON THE CLIMATE POLLUTION  
REDUCTION GRANT**





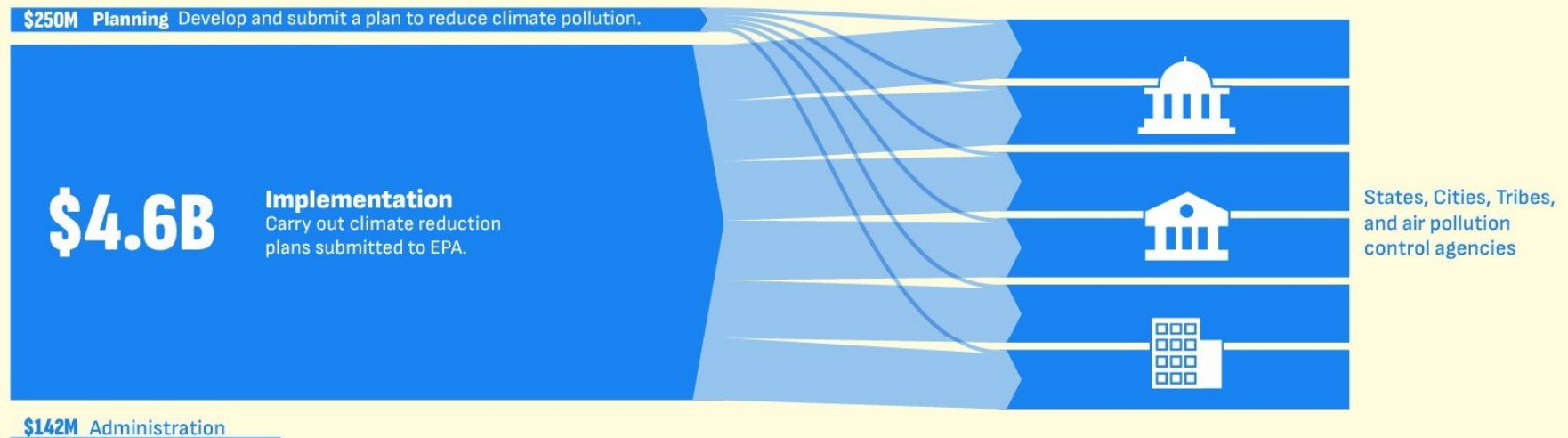
**CLIMATE  
POLLUTION  
REDUCTION  
GRANTS**

U.S. Environmental Protection Agency

## Kane County Coalition Update



# Recap from November



Administered By



40% of Funds to  
Disadvantaged Communities

**J40**



# Participating Municipalities and Counties

## • Kane County as the Lead Coalition

### • Counties

- Will
- Dupage
- \*Kendall
- \*Lake

\*Tentative

### Municipalities

- Highland Park
- Elgin
- Aurora
- Mokena
- Naperville
- Waukegan
- Batavia
- \*Geneva
- \*Wheeling
- \*Downers Grove



# Timeline of forming the coalition

- 1) Letter of invitation was sent out to over 400 local government officials in September
- 2) 1<sup>st</sup> zoom meetings were in – October with Confluence Climate Consulting (C<sup>3</sup>) consultant Kris Murphy presented the information
- 3) Correspondences continued through emails and zoom meetings which involved discussing budgetary details and exploring various project concepts. We identified three principal sections in December.
- Electric Power, Buildings, and Transportation



# Notice of Intent sent on January 31<sup>st</sup>

---

- Communitywide and targeted education and outreach, rebates on electric efficiency and renewable energy, group buys, technical assistance programs and additional staff required for implementation.
- Subawards to subrecipients are planned to deploy solar systems, batteries, electric vehicle chargers, and improving efficiency and electrifying buildings. Underserved segments of the region will receive prioritized attention in the initiatives focused on mitigating of greenhouse gas emissions.



# Example Budget

LED Retrofits	Ballpark Cost	COMED savings	EECBD savings	Cost after Incentives Deducted	Kwh Removed per year	Energy Savings per year
Circuit Court	200,000	27,000	586.5	172,414	376,106	\$25,951
3rd street court	\$250,000	35399.5	156.75	\$214,444	1,422,906	\$98,180
JJC	\$500,000	\$33,500.00	\$17,043	\$449,457	305722	\$210,948
JC	\$800,000	\$93,000.00	\$16,977	\$690,023	722693.8	\$498,659
Gov A	\$250,000	6200	\$1,309	\$242,491	165,798	\$11,440
Gov B	\$100,000	11024	\$977	\$87,999	92,505	\$63,829
Gov C	\$350,000	4508.5	\$2,533	\$342,959	96,970	\$66,910
	Original Cost of installation	Total COMED	Total EECBD	Total Savings from initial cost from rebate	New estimate Cost for installation	Total Savings on utility bill each year
	<b>\$2,450,000</b>	210,632	39582.25	250,214	<b>\$2,199,786</b>	<b>\$975,917</b>

- The Coalition will be requesting \$150,000,000



**1,170** Metric Tons ▾ of Carbon Dioxide (CO<sub>2</sub>) equivalent

This is equivalent to greenhouse gas emissions from:

**260** gasoline-powered passenger vehicles driven for one year ?



**3,000,110** miles driven by an average gasoline-powered passenger vehicle ?



This is equivalent to CO<sub>2</sub> emissions from:

**131,686** gallons of gasoline consumed ?



**114,960** gallons of diesel consumed ?



**1,310,911** pounds of coal burned ?



**15.5** tanker trucks' worth of gasoline ?



**147** homes' energy use for one year ?

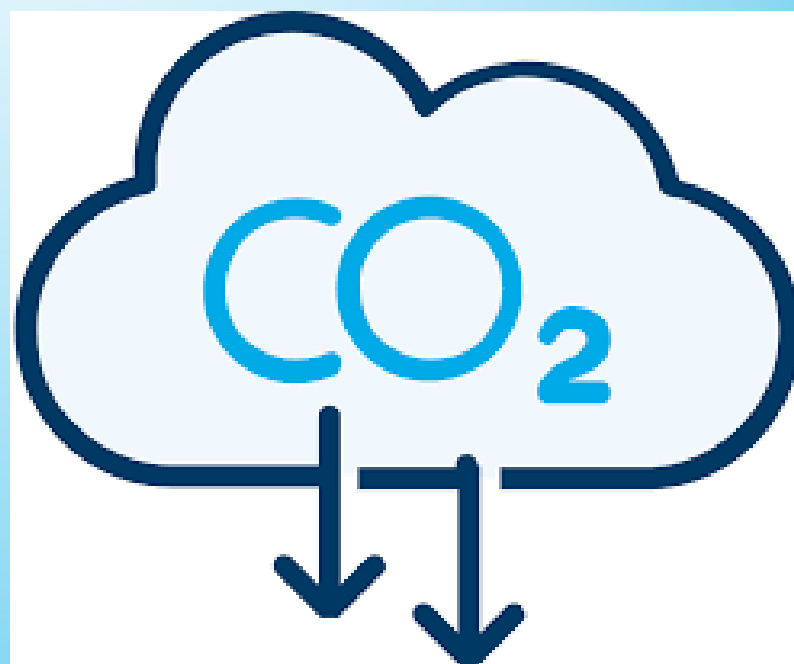


**228** homes' electricity use for one year ?





- To discuss further advantages in applying for the CPRG funds
- Vince Coyle









WHEREAS, Kane County, as coalition lead, will provide subawards to subrecipients for projects listed in the application as deemed eligible by the US EPA and the subrecipients will be accountable to the Kane County for proper use of EPA funding, successful project implementation, procurement of equipment and contractors consistent with EPA subaward policy and any other state or federal regulations.

NOW, THEREFORE, BE IT RESOLVED by the Kane County Board that the Kane County Board Chairman is authorized to execute documents in the application and acceptance of any funds from the Climate Pollution Reduction Grant for the purpose of reducing GHG emissions, improving air pollution, and any other project deemed eligible by the US EPA.

NOW, THEREFORE, BE IT RESOLVED by the Kane County Board that the Kane County Board Chairman is authorized to execute a Memorandum of Agreement and other related intergovernmental agreements for the creation of and participation of a coalition of municipal or county entities for purposes of the Climate Pollution Reduction Grant, which Kane County will be the lead applicant and accountable to U.S. Environmental Protection Agency for carrying out the full scope of work and the proper financial management of the grant.

Passed by the Kane County Board on March 12, 2024.

---

John A. Cunningham, MBA, JD, JD  
Clerk, County Board  
Kane County, Illinois

---

Corinne M. Pierog MA, MBA  
Chairman, County Board  
Kane County, Illinois

Vote:





## RESOLUTION / ORDINANCE EXECUTIVE SUMMARY ADDENDUM

### **Title**

Authorizing Execution of Documents Related to the Climate Pollution Reduction Grant Aware and Agreements for Kane County to Lead a Coalition Including Other Municipal and County Entities

### **Committee Flow:**

Energy and Environmental Committee, Executive Committee, County Board

### **Contact:**

Jodie Wollnik (630) 232-3499

### **Budget Information:**

Was this item budgeted? NA	Appropriation Amount: \$NA
If not budgeted, explain funding source: NA	

### **Summary:**

The Climate Pollution Reduction Grant Award incentivizes eligible applicants to apply for funding as a coalition to implement GHG reduction measures across multiple municipalities. Kane County would act as the lead applicant for the grant and act as the 'pass through entity' for applying and administering funds, taking full responsibility for the performance of the coalition and be accountable to the EPA for carrying out the scope of work.



STATE OF ILLINOIS )

SS.

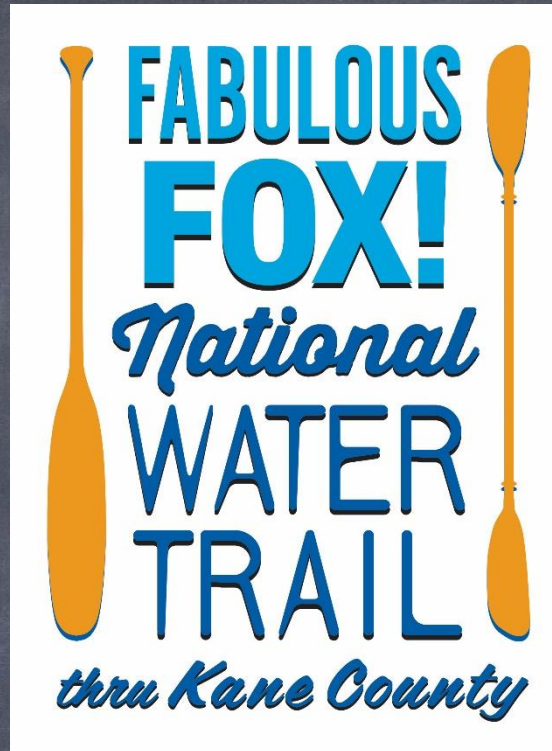
COUNTY OF KANE )

**PRESENTATION/DISCUSSION NO. TMP-24-1772**

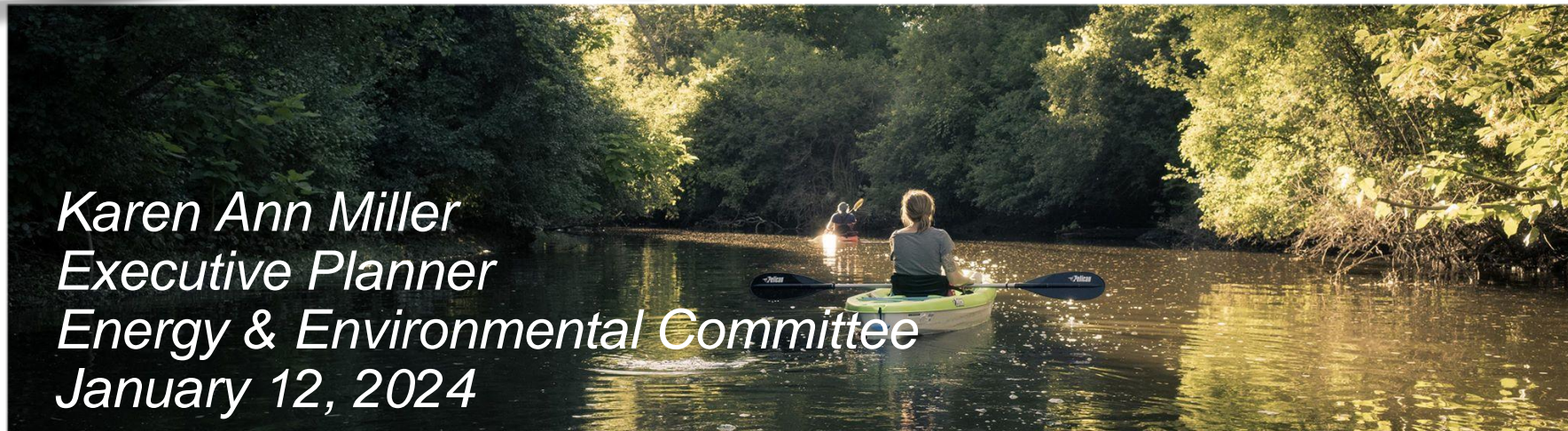
## FABULOUS FOX! WATER TRAIL ACCESS INFRASTRUCTURE PROJECT



Welcome to the...



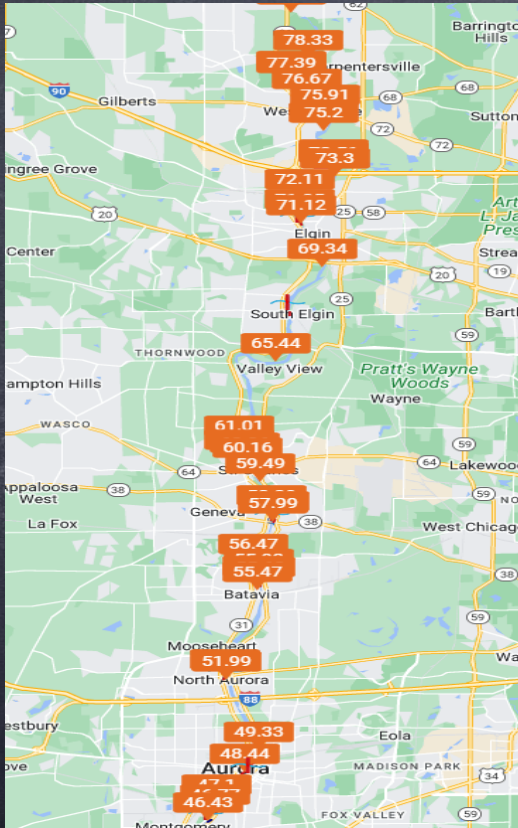
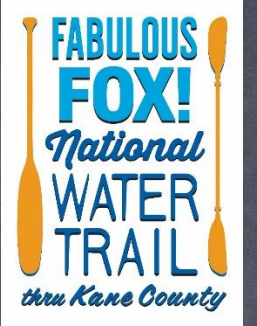
*Karen Ann Miller  
Executive Planner  
Energy & Environmental Committee  
January 12, 2024*





# Fabulous Fox! Water Trail Access Infrastructure Project

*Assist Kane County with the design and construction of new and upgraded water trail access infrastructure to support the further development of the Fabulous Fox! Water Trail in Kane County*



***Hey and Associates, Inc.***

Suitability Factors for site identification & prioritization:

- ✓ Public landowner interest & involvement
- ✓ Functionality of current access facilities including accessibility constraints
- ✓ Permitting complexities
- ✓ Proximity to important supportive services for visitors
- ✓ Proximity/connectivity with other historical/ecological/cultural and/or recreational features
- ✓ Estimated construction cost
- ✓ Long-term costs of maintaining the proposed site access infrastructure



STATE OF ILLINOIS )  
COUNTY OF KANE ) SS.

**PRESENTATION/DISCUSSION NO. TMP-24-1892**  
**TREE PRESERVATION ORDINANCE TRAINING OPPORTUNITY**



# Tree Preservation Ordinance for Unincorporated Kane County Training Opportunity

## Tree Ordinance Administration Workshop

- ▶ Thur. April 11
- ▶ 8:00 AM to 3:00 PM
- ▶ Morton Arboretum  
Thornhill Education Center
- ▶ \$18
- ▶ [https://mortonarb.org/explore/activities/adult-programs/tree-ordinance-administration-workshop/?fbclid=IwAR3brhJc3COLE\\_wFvXs\\_FJXMtcZOwT55LLpwd3Wy72tg1JZBpItAaiYcXJo#overview](https://mortonarb.org/explore/activities/adult-programs/tree-ordinance-administration-workshop/?fbclid=IwAR3brhJc3COLE_wFvXs_FJXMtcZOwT55LLpwd3Wy72tg1JZBpItAaiYcXJo#overview)

This full-day workshop will provide insight and examples on how to administer and manage a tree preservation ordinance effectively and equitably. Using real world examples, attendees will learn how to strike a balance between the black and white of the law, the BMPs (Best Management Practices) of site development and tree health, and the positive and negative realities of tree preservation. This training is intended for land managers, urban foresters, certified arborists, code enforcement officials, architects, civil engineers, consultants, and anyone working to improve their urban forest. Breakfast and lunch will be provided. 5.5 CEU's will be earned for ISA Certified Arborists.





STATE OF ILLINOIS )

SS.

COUNTY OF KANE )

**PRESENTATION/DISCUSSION NO. TMP-24-1806**

# KANE COUNTY TREE ORDINANCE



STATE OF ILLINOIS )

SS.

COUNTY OF KANE )

**PRESENTATION/DISCUSSION NO. TMP-24-1801**

# 2024 KANE COUNTY RECYCLES GREEN GUIDE



# KANE COUNTY RECYCLES GREEN GUIDE 2024

Welcome to the Green Guide! This booklet, along with our website, aims to help Kane County residents recycle right and reduce waste.

I began in the role of County Recycling Coordinator in early 2022, and since then have learned ever so much! I wanted to share my top three take-aways here:

## 1. Recycling is real.

Having visited five facilities in Illinois that sort and process various materials, I've seen first hand the substantial investments in equipment and labor that make recycling work. In 2022, waste haulers collected 64,000 tons of curbside recyclables from Kane County residents.

## 2. Recycling is confusing.

What is and isn't accepted in recycling programs changes with time and place. Plastic items that can't be recycled sometimes have recycling symbols printed on them anyway. Some materials can only be recycled at special drop-offs, and there is no drop-off that takes everything. Frustrating! We're lucky in Illinois to have some great resources like the curbside recycling guidelines in the centerfold of this guide, which was developed by consensus among state recycling experts. Even so, I don't blame anyone for being confused about recycling. Please ask questions and do the best you can.

## 3. Recycling is part of the solution.

However, it isn't a silver bullet. While almost anything can be recycled in theory, there are limits to technology and market demand so that certain everyday items are not recycled in practice. In these pages, I hope to encourage you to consider reusing durable items as much as possible, either in your own home or through resale or donation. However, consumers alone shouldn't carry the burden of reducing waste. We need businesses and policy makers to be involved in reimagining products and packaging to be more sustainable. I've been encouraged by the success of Extended Producer Responsibility (EPR) policies in Illinois and elsewhere, that require manufacturers to take an economic stake in the end-of-life management of their products. Successful EPR efforts at the state level have increased access to electronics recycling (see p2) and safe medication disposal (box, p5), and new options will be coming for paint next year (box, p3). However, there's a lot more to do to make comprehensive recycling available to all.

Clair Ryan, Kane County Recycling Coordinator

[www.countyofkane.org/recycling](http://www.countyofkane.org/recycling)  
630-208-3841  
[recycle@countyofkane.org](mailto:recycle@countyofkane.org)

## NEW IN CURBSIDE RECYCLING: PAPER CUPS

Paper cups for hot and cold beverages are now recyclable through curbside programs. Advancements in paper pulping technology allow the paper fiber in the cups to be recovered from the plastic lining. For successful recycling, cups must be empty (no ice or coffee dregs) and clean (give a quick rinse for residues), and lids, straws and stirrers should be removed and put in the trash. If you buy a lot of carry-out drinks, invest in a quality reusable cup!



### INSIDE:

County Recycling Centers.....	2
County 2024 Recycling Events.....	3
Household Hazardous Waste.....	4-5
Curbside Recycling.....	6-7



Reuse & Recycling A-Z.....	8-10
Reuse Options.....	10
Resource Conservation.....	11
Hauler Contacts.....	12



# RECYCLING CENTERS

## LOCATIONS & ACCEPTED ITEMS:



### BATAVIA

517 E. Fabyan Pkwy.  
Mon - Fri, 8am - 4pm



### WEST DUNDEE

Dept. of Public Works  
900 Angle Tarn  
Mon - Fri, 7am - 3pm



### AURORA

Ace Hardware  
994 N. Lake St.

Monthly first Saturdays, 9am - noon



### ELBURN

LRS, 1N138 Linlar Dr.  
Mon - Fri, 8:30am - 2:30pm

\*Pre-registration req'd for this site only; call 844-633-3577\*

## CENTER RECYCLING COSTS

eWorks Electronics Services, Inc., the County's non-profit recycling collection partner, charges fees on TVs and computer monitors:

- \$25 for items with screens less than 21 inches, measured diagonally
- \$35 for items with screens 21 inches or larger
- Cash & cards accepted at Batavia, W. Dundee & Aurora
- Fees for Elburn must be paid over the phone upon registration 844-633-3577

Fees for aerosols and small propane tanks (Batavia only):

- \$1 for aerosols
- \$3 for propane tanks (16.4 oz. or smaller)

ELECTRONICS

CLOTHING & TEXTILES

BOOKS, PAPER, CARDBOARD

METAL & LARGE APPLIANCES

AEROSOLS

TAPES & DISCS



Sites are closed on most major holidays - call or check County website for closure info.

eWorks is R2v3 certified by Sustainable Electronics Recycling International. This certification requires strict adherence to environmental and data security best practices.

## ITEMS NOT ACCEPTED (SEE PAGES 8 - 10 FOR SOLUTIONS)

Devices containing refrigerant including fridges, freezers, ice makers, A/C units, and dehumidifiers; loose batteries; light bulbs; large cabinet speakers; non metal furniture; mattresses; spiral bound books; Styrofoam; dirty, wet, moldy, or bug infested textile or paper fiber items (stains that won't wash out are fine!); empty CD, DVD or tape cases. Please check website, call or email the Recycling Coordinator (see front cover) with item acceptance questions.



## CENTER ATTENDANTS

Batavia, W. Dundee & Aurora are fully staffed by eWorks during open hours. Staff will help residents to unload heavy or bulky items and will process payments. The Elburn location is staffed by LRS.

## KIOSK AT FABYAN

We have a new self-service kiosk at Fabyan for the following small items: non-liquid art and school supplies, eye glasses and hearing aids, ink-jet cartridges, multi-beverage holders (both can caddies and multi-pack rings).





# 2024 RECYCLING EVENTS

## COUNTY EVENT INFO & DATES:



**Shred 'n' More, Sat., May 4th, 8am - noon, 540 S. Randall Road, St. Charles**

**Featuring:** Confidential document shredding, collection of clothing, textiles and small home goods, liquid latex paint\*, aerosols\*, child car seats\* and small propane tanks.\*

**Recycling Extravaganza, Sat., July 20th, 8am - noon, 540 S. Randall Road, St. Charles**

**Featuring:** Collection of electronics\*, clothing, shoes, books, Styrofoam, bikes & bike accessories, batteries, fluorescent lights, liquid latex paint\*, aerosols\*, child car seats\* and small propane tanks.\* (call or check website for full item list closer to event date)

**Shred 'n' More, Sat., Sept. 28th, 8am - noon, 540 S. Randall Road, St. Charles**

**Featuring:** Same as May 4th event, above

**Campaign Sign Recycling, November (tent.)** - call or check website for details in the fall

**Pumpkin Composting, November (tent.)** - call or check website for details in the fall

\*= fees apply, see bottom of page

## CONFIDENTIAL DOCUMENT SHREDDING INFO:

- Shredding is free but limited to the residential shredding needs of Kane County residents (**household/personal records only - no business records**)
- Documents are shredded on site by mobile shredding trucks
- Quantity limit of one car load (~4 standard bankers boxes) per household per event
- Please remove all three-ring binders, metal file hangars, and large binder clips; small fasteners like paper clips and staples are not an issue
- Please do not bring any of the following as they are either not confidential or not recyclable: magazines, catalogues, junk mail, photographs and photo albums, cash register receipts, greeting cards (especially those with batteries), school papers

## EVENT RECYCLING FEES:

**Latex paint by can size:** quart or less is \$1; gallon is \$3; 2-gallon is \$5; 5-gallon is \$15

**Aerosols:** \$1 each

**Propane Tanks (16.4 oz. or smaller):** \$3 each

**Car Seats/Boosters:** \$10 each

**TVs/Monitors:** \$25-\$35 (see opposite page)



## NEW PAINT RECYCLING OPTIONS COMING SOON

In 2023 the IL General Assembly passed the Paint Stewardship Act, that will change the way unwanted paint is collected for recycling. There will be a fee added to each can of new paint sold in the state, but dropping off paint for recycling will be free, and there will likely be many more drop-off opportunities available. The sales fees will likely be smaller than the current per-can recycling fees that most paint recyclers charge, because paint manufacturers will cover some of the costs. The new program is expected to start in 2025. Check our website and future Green Guides for details!

## WE LOVE VOLUNTEERS!

The success of Kane County's recycling events depend on community volunteers! We can find tasks to suit most activity levels and can sign off on hours for various programs. Call or email to join us (contact info on front cover).





# HOUSEHOLD HAZARDOUS WASTE

## WHAT IS HHW?

Household Hazardous Waste (HHW) is waste material used and stored in homes that poses a hazard in the waste stream. These materials are usually either toxic to people and the environment and/or are highly flammable or corrosive. Several common HHW materials are listed below.

**black** = accepted at Naperville & County home collection program  
**green** = accepted through County home collection program but not at Naperville

\* = prohibited from landfill disposal by state law

Aerosols

Antifreeze

Batteries, Lead Acid\*

Batteries, Other Rechargeable

**Batteries, Single-use/Alkaline**

Fire Extinguishers

Fluorescent Light Bulbs & Tubes

Gasoline & Other Fuels

Household Cleaners

**Paint, Latex/Water-based**

Paint, Oil-based

Pesticides

Propane Tanks

Lawn Chemicals

Mercury-containing Items

Motor Oil\*

Pool Chemicals

Strong Acids & Bases

## GREEN TIP!

By far the most common HHW items are lawn chemicals and paint. Plan your lawncare and painting projects carefully to avoid over-buying!

## DROP-OFF



**What:** Naperville Household Hazardous Waste Facility

**Where:** 156 Fort Hill Drive, Naperville, IL 60540

**When:** every Saturday & Sunday, 9am - 2pm (closed major holidays)

**Accepting:** Residential HHW in open containers from any Illinois household **for free**

**Contact:** 630-420-6095, Mon - Fri, 7am - 4pm with questions

**Did You Know:** The Naperville HHW Facility is one of only five IEPA- supported HHW facilities in the state.



## HOME COLLECTION (ELIGIBLE AREAS)



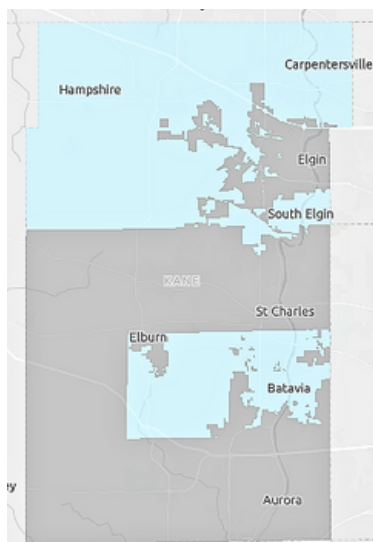
**What:** Once-per-year **free** home collection of HHW

**Eligibility (blue areas on map inset below are eligible)**

- Kane County addresses in any of the following municipalities: Algonquin, Batavia, Burlington, Carpentersville, East Dundee, Geneva, Gilberts, Hampshire, Huntley, Pingree Grove, Sleepy Hollow, South Elgin, West Dundee
- Unincorporated addresses within the bounds of the following townships and SSA: Blackberry, Burlington, Dundee, Elgin, Hampshire, Plato, Rutland, Mill Creek Special Service Area

**Eligibility Questions:** Kane County Recycling Coordinator, 630-208-3841

**Booking & Item Questions:** Clean Harbors Environmental Services, 866-466-5060



## OTHER OPTIONS?

Some municipalities secure HHW collection services as part of their regular trash & recycling contracts. City of Elgin and Maple Park residents can use the WM At-Your-Door service: 800-449-7587. Village of Hampshire and Village of Sugar Grove residents can call their hauler about HHW service by using the contacts provided on the back cover of this guide.



## BATTERIES



Battery recycling is challenging for two main reasons: 1) batteries cannot be recycled in curbside recycling bins, and 2) the right place to drop batteries off for recycling depends on the battery type. The most important batteries to recycle carefully are rechargeable batteries used in electronic devices, power tools, etc. **Please never place rechargeable batteries in regular trash or recycling bins as they can start fires in waste processing facilities.** Instead, take them to a site listed below, use an HHW program (opposite page) or take them to any Lowes or Home Depot location for recycling. Note that Kane County's Recycling locations (see p2) cannot accept loose batteries.

Single-use, non-rechargeable batteries, especially the very common alkaline type, are costly to recycle and contain no hazardous materials, so fewer locations accept them, and many that do charge fees based on quantity. If recycling alkaline batteries is not practical, it is safe to throw them in regular trash.

## DROP-OFFS - ALL SMALL/HOUSEHOLD BATTERIES (LOCATIONS LISTED FROM NORTH TO SOUTH)

**Batteries + Bulbs**, 1497 S. Randall, Algonquin (call for costs & hours - 847-802-8858)

**Elgin Fire Dept. Station 2**, 650 Big Timber Rd., Elgin (24/7 access, free)

**Pingree Grove Fire Protection District**, 39W160 Plank Rd., Elgin (24/7 access, free)

**Batteries + Bulbs**, 352 Randall Rd., Elgin (call for costs & hours - 847-289-8990)

**Elgin Township Highway Dept.**, 725 S. McLean Blvd., Elgin (24/7 access, free)

**Elgin Fire District Annex**, 8N709 Stevens Rd., Elgin (24/7 access, free)

**St. Charles Dept. of Public Works**, 1405 S. 7th Ave., St. Charles (M-F, 7am - 3pm, free)

**Flat Can Recycling**, 732 Hicks Dr., Elburn (call for costs & hours - 630-400-4906)

**Geneva Dept. of Public Works**, 1800 South St., Geneva (M-F, 7am - 3pm, free)

**Batteries + Bulbs**, 1492 S. Randall Rd., Geneva (call for costs & hours - 630-313-5700)

**Batteries Unlimited**, 83 S. River St., Aurora (call for costs & hours - 630-340-4601)

## LIGHT BULBS & TUBES



Recycling efforts for household lighting should focus on fluorescent lights (both compact bulbs and tubes) and LEDs. Older light bulb types, including simple incandescent bulbs, cannot be recycled and should be put in regular trash. **Kane County has partnered with the Ace Hardware located at 617 W. State St. in Geneva to accept all fluorescent lights and LEDs from County residents at no cost year-round.** The Batteries + Bulbs locations listed above accept most lightbulb types but may charge fees per item; call stores for details. Many big box hardware stores also accept compact fluorescent bulbs for free recycling. Give your favorite store a call or ask at customer service.

## INDUSTRY-FUNDED MEDICATION TAKE-BACK

The Illinois Drug Take-Back Act went fully into effect on December 1, 2023, requiring pharmaceutical companies to fund programs providing at least 10 medication take-back kiosks in Kane County for old and unwanted prescription medications. According to the program plans submitted to the IEPA, we will actually have 20 funded kiosks! There isn't space to list all 20 here, and several of them have been in place previously and are just switching the source of funding. There are new collection kiosks at:

- Elburn Police Dept.
- Hampshire Police Dept.
- Hampshire Pharmacy
- Medical Park Pharmacy (Aurora)
- Presence-Mercy Pharmacy (Aurora)
- St. Joseph's Hospital (Elgin)

If you need help finding the closest medication drop-off site to your home, visit the medications page of our website or call 630-208-3841 for assistance. Residents may request mail-back packages for medication, either online or by calling either one of the two state program operators:

- Inmar: 1-833-445-2382
- MED-Project:  
1-844-633-7765



# RECYCLING GUIDELINES

# YES!



## METAL

Steel & Aluminum Containers and Foil



## PAPER

Cardboard (flattened),  
Office Paper, Newspaper, Magazines

**Clean & Empty**

Replace lids & caps

**Put material in loose  
- Not in bags**



## GLASS

Containers: Bottles & Jars Only



## PLASTIC

Containers: Bottles, Tubs, Jugs,  
and Jars Only



## CARTONS

# NO!



**No Plastic Bags  
No Plastic Wrap**

(return clean to retailer)



**No Big Items** (Electronics, Wood,  
Propane Tanks, Scrap Metal or Styrofoam –  
see [countyofkane.org/recycling](http://countyofkane.org/recycling) for other recycling options)



**No Tangles** (Hangers, Hoses,  
Wire, Cords, Ropes or Chains)



**No Clothing**  
Textiles or Shoes (donate)



**No Food, Liquid, Diapers,  
Batteries or Needles**



**No Shredded Paper**  
(see [countyofkane.org/recycling](http://countyofkane.org/recycling) for other recycling options)

These Guidelines represent the common items accepted in most recycling programs in Illinois. For greater detail on specific items or programmatic variations, reach out to your local authority.

To find out more detail, including recycling and reuse programs beyond the bin, visit [countyofkane.org/recycling](http://countyofkane.org/recycling), or contact [recycle@countyofkane.org](mailto:recycle@countyofkane.org) or 630-208-3841.

Also see the EPA online resource at

<https://www2.illinois.gov/epa/topics/waste-management/Pages/recycling.aspx>





# DIRECTRICES PARA EL RECICLAJE

# ¡SÍ!



## METAL

Envases de acero/aluminio y papel de aluminio



## PAPEL

Cartón (aplanado), papel de oficina, periódico, revistas



## VIDRIO

Botellas y frascos solamente



## PLÁSTICO

Botellas, jarras, y recipientes de plástico solamente

**Limpios y vacíos**  
DEJE LAS TAPADERAS PUESTAS



**ENVASES DE CARTÓN PARA ALIMENTOS Y BEBIDAS**

# ¡NO!



**No coloque los reciclables en bolsas**



**No bolsas ni envolturas de plástico**

(Limpie y regrese estas al comerciante donde las obtuvo)



**No a los artículos que se enredan**

(Ganchos, mangueras, alambres, cordones, cuerdas y cadenas)



**No artículos grandes**

(Electrónicos, madera, tanques de propano, deshecho metálico, o uncel - Para otras opciones de reciclaje, visite a [swalco.org](http://swalco.org) y consulte a nuestra guía en línea "Where Do I Recycle This?" (¿Dónde reciclo esto?)



**No comida, líquidos, pañales, baterías ni agujas/jeringas**



**No artículos de ropa, textiles ni zapatos**

(Visite a [swalco.org](http://swalco.org) para una lista de los sitios de colección de ropa, textiles, o sitios de colección de zapatos para reutilización)

These Guidelines represent the common items accepted in most recycling programs in Illinois. For greater detail on specific items or programmatic variations, reach out to your local authority.

To find out more detail, including recycling and reuse programs beyond the bin, visit [countyofkane.org/recycling](http://countyofkane.org/recycling), or contact [recycle@countyofkane.org](mailto:recycle@countyofkane.org) or 630-208-3841.

Also see the EPA online resource at

<https://www2.illinois.gov/epa/topics/waste-management/Pages/recycling.aspx>





# REUSE & RECYCLING A - Z

The Kane County Recycling Program Coordinator answers over 1,000 resident questions about how to recycle or otherwise dispose of all kinds of things every year. Our full A-Z list of hard-to-recycle items is on our website ([www.countyofkane.org/recycling](http://www.countyofkane.org/recycling)). The next few pages include solutions for some of the most asked about items.

**Aerosol Cans:** Cans for non-hazardous products (e.g. foods, shaving cream) that are completely empty can go in curbside recycling. All aerosols are accepted for \$1 per item at our Fabyan recycling center (p2) and at Flat Can Recycling (732 Hicks Dr., Elburn). Aerosols are also accepted through HHW programs (p4).

**Appliances:** Modern, working appliances are great candidates for reuse. Try online reuse options (see box, p10), a garage sale, or donation. Most thrift stores accept small appliances in working order. Habitat for Humanity ReStore (800 N. State St., Elgin) accepts both small and larger items.

Kane County Recycling Centers accept appliances without refrigerants for recycling (p2). Aurora, West Dundee and Fabyan locations accept small appliances. Fabyan can also accept larger refrigerant-free items.

Federal law requires that refrigerant be recovered from appliances like A/C units, fridges, freezers and dehumidifiers prior to recycling. These items are most easily and cheaply disposed of curbside (call your hauler, p12). Elgin Recycling (660 Schiller St., Elgin & 161 Center Dr., Gilberts) allow drop off of these items with a refrigerant reclamation fee. Call 847-972-6574 for current pricing.

## GREEN TIP!

Americans today buy and discard more clothing and textile than ever before. On average, we throw away 81.5 lbs. per person each year. Despite resale, donation and recycling options, about 66% of textile discards are landfilled. A lot of low quality clothing is shipped overseas where it may end up at unregulated dump sites. Collectively, we need to rethink our relationship to clothes and invest in quality over quantity.

**Art & Craft Supplies:** Now accepted at our Fabyan kiosk to benefit local non-profits (page 2). Association for Individual Development in Aurora also accepts art supplies directly - call 847-931-2292 to arrange.

**Batteries:** See page 5.

**Books:** Reuse is best for fiction and current non-fiction. Donate to your public library book sale, a Free Little Library, a church or daycare center, a thrift store, or sell/trade to a local used book shop or an online trader. Kane County takes books for recycling in Aurora, West Dundee and at Fabyan (p2). No spiral bindings, please!

**Car Seats/Boosters:** Accepted by Flat Can Recycling at Kane County's recycling events (p3) and Flat Can's site at 732 Hicks Dr., Elburn. There is a fee of \$10 per item.

**Clothing, Shoes, Textiles:** Reuse is best, and the closer to home the better. Can you have ill-fitting or slightly damaged items repaired or tailored to keep them in your closet for longer? Otherwise, try online reuse options (see box, p10), a garage sale, or donation. Options for clothing donation are nearly endless, with numerous thrift stores and donation bins to choose from. Some of these directly benefit local non-profits. For example, clothing and textiles brought to Kane County's recycling centers (p2) are sold to benefit eWorks' job skills training programs for developmentally disabled students in the region. Most large thrift stores, clothing bins, and the County centers can accept items that are permanently stained, torn or damaged, as long as they are clean and dry. These items are generally recycled into insulation, shop rags, carpet padding, upholstery stuffing, and other industrial uses.





**Exercise Equipment:** Reuse is best! Can a replacement part or service technician bring a stalled treadmill back to life? For working unwanted equipment, try online reuse options (see box, p10), a garage sale, or donation. Association for Individual Development (309 New Indian Trail Ct., Aurora) takes working treadmills and stationary bikes - call 847-931-2292 for info. Cash4Treadmills is a Chicago region company that buys gently used whole machines and parts. See cashfortreadmills.com or call 847-404-6054. Worn out equipment generally goes in the trash - call your hauler (p12) about bulk item pick up. Metal items like free weights, pull-up bars, and any metal machine component can be brought to the Fabyan recycle center (p2) or to any metal scrap dealer. Kane County sites cannot accept whole exercise machines.

**Furniture:** Reuse is best for items in decent condition. Can a piece that's gotten slightly shabby be restrained or reupholstered? Or, try online reuse options (see box, p10), a garage sale, or donation. Habitat for Humanity ReStore (800 N. State St., Elgin), Wayside Cross (215 E. New York St., Aurora) and St. Vincent De Paul/DejaVu (911 Sullivan Rd., Aurora) take furniture and may offer pick up. Junk hauling companies will also facilitate furniture donation. Worn out/broken furniture generally goes in the trash - call your hauler (p12) about bulk item pick up. Metal items or components can be brought to the Fabyan recycle center (p2) or to any metal scrap dealer.

**Light Bulbs & Tubes:** See page 5.

**Mattresses & Box Springs:** A like-new item may be sold or given away online (see box, p10). Most thrift stores and charities do not take used mattresses. There are companies that specialize in mattress collection for recycling, including Bedder World (abedderworld.com, 720-263-6094) and Mattress Disposal + (mattressdisposalplus.com, 877-708-8329). Most non-specialized junk removal companies will also collect mattresses and send them for recycling when possible. The least expensive option is likely to be curbside disposal to the landfill though your regular waste hauler (p12). Call first for details and requirements.

**Medications:** See box on page 5.

**Media Items (CDs, DVDs, VHS, etc.):** Reuse is best for commercially recorded items in playable condition. Donate to a thrift store, or sell/trade to a local used record shop or an online trader. Kane County facilitates local reuse of unwanted media items through collection at our Fabyan recycling center (p2). The company GreenDisk (greendisk.com) has an affordable self-pack option to mail items for recycling. This is a good option for empty cases and damaged/unsellable items. Otherwise, these items should be put in regular trash.

**Motor Oil:** See HHW programs (p4). Additionally, many chain auto parts stores will accept residential quantities of used oil for little or no cost. It is illegal to put used motor oil in regular trash in Illinois.

**Plastic Bags and Films:** Where possible, it's best to avoid single use plastic bags by choosing reusable bags or boxes. Area chains that participate in the NexTrex program to collect plastic film for use in composite decking include Fresh Thyme, Jewel-Osco, Kohl's, Mariano's, Meijer, and Save-A-Lot. Kiosks at these stores accept shopping bags, case wrap, bubble wrap, bubble mailers, shipping bags, and other flexible, stretchable, non-crinkly plastic film items. See nextrex.com for more info. **Please do not put plastic bags or any flexible plastic items in your regular recycling cart or container!**

**Sharps/Needles:** The Kane County Coroner's Office (37W699 Rt.38, St. Charles) accepts sharps from human residential use at no cost. Sharps for drop-off should be in a sturdy plastic container one gallon or smaller, clearly marked as sharps and sealed closed with duct tape. Hours are M-F, 8:30am - 4:30pm, 630-232-3535. Ask your doctor's or vet's office about other options they may have available. There are also sharps mail-back kits for purchase through multiple companies online. As a last resort, sharps that are containerized as described above can be placed in regular household trash - **not recycling**.

**Shredded Paper:** Kane County's Aurora, West Dundee and Fabyan locations (p2) accept residential quantities of shredded paper in paper bags stapled closed. Do not place shredded paper in regular recycling. **Note: Kane County sites do not offer routine shredding service, but see p3 for shredding events.**



# A - Z, CONTINUED

**Six-Pack Rings and Can Caddies:** Both traditional flexible six-pack rings and snap on can caddies are accepted at our Fabyan kiosk (p2). Can caddies are also accepted at Heartland Beverage (750 N. 17th St.) and Riverlands Brewing (1860 Dean St., Unit A) both in St. Charles.



**Smoke & CO Detectors:** All types of smoke and carbon monoxide detectors may be legally placed in normal trash. See p5 for battery recycling options. There are a few mail-in programs for ionization smoke detectors, which contain very small amounts of radioactive material. Contact the device manufacturer or Curie Environmental Services, [curieservices.com](http://curieservices.com), 505-888-9392. Neither Kane County sites nor the Naperville HHW site accept smoke or CO detectors.

**Styrofoam:** There are two known recycling drop-offs in the County: Dart Container at 310 Evergreen Drive, North Aurora has a recycling vestibule that accepts packaging foam (marked #6) and clean, bagged take-out containers 24/7. Chicago Logistics Service at 701 Wesemann Dr., West Dundee accepts packing foam (marked #6), clean take-out containers, and containerized foam packing peanuts. Drop off is at rear dock door 109, M-F, 8am - 5pm, call 847-429-1926 for assistance. **Do not put foam material in curbside recycling.**

**Toys:** Reuse is best for toys in good shape. Try online reuse options (see box below), a garage sale, or donation. Most thrift stores accept small toys. Once Upon a Child (250 S. Randall Rd., Elgin & 552 Rt.59 Naperville) buys newer toys for resale. Mattel has a free mail-back program for certain of its brands (including Barbie and Fisher-Price) - web search "Mattel PlayBack" for details.

## THE WIDE WORLD OF REUSE OPTIONS

There is nothing wrong with donating unwanted items to traditional brick-and-mortar thrift stores and charities, especially when the proceeds are used to benefit local communities and neighbors in need. However, thrift stores are often inundated with stuff, and items that don't sell in a relatively short amount of time are either sold off in bulk or sent to landfill by necessity. The internet and various social media platforms have opened up a variety of options for person to person (P2P) giving and selling of second-hand items, including hyper-local options that eliminate the need for shipping. Listing unwanted items on these platforms may take more time than dropping off at a thrift store, as sellers/givers will generally need to post a photo and an item description for each listing. The upside is that items given or sold P2P are more likely to have a robust second life. Always keep safety in mind when selling or giving away items online. Never share personal information with strangers, including phone numbers; it's best to keep communication on the app or website hosting the listing. Consider making all exchanges at public, well-lit places or police station parking lots. Many police stations have a spot reserved just for this purpose!

♥ = platform for free giving  
\$ = platform for selling

### GREEN TIP!

Close the loop by buying high quality second hand items instead of new when practical.

### LOCAL ONLINE P2P GIVING AND RESALE NETWORKS

- ♥ Freecycle.org (add towns based on location)
- ♥ Trashnothing.com (post based on zip code)
- \$ ♥ Craigslist.com (post based on zip code)
- \$ ♥ Offerup.com (post based on zip code)
- ♥ Facebook Groups: Buy Nothing (join group for your town)
- \$ ♥ Facebook Marketplace (join local buy/sell/trade group)
- \$ ♥ Nextdoor.com (post based on neighborhood/zip code)



# USE LESS, USE WISELY

## REDUCING CARBON FOOTPRINT



A personal or household carbon footprint is an index value that indicates how much greenhouse gas (typically, carbon dioxide and methane) a person or family generates through everyday activities. The average carbon footprint in the United States is three-to-four times higher than the global average. Here are some tips that residents can follow to tread more lightly on the Earth and save some money on energy costs too!

- Calculate your household footprint at [www3.epa.gov/carbon-footprint-calculator/](http://www3.epa.gov/carbon-footprint-calculator/)
- Turn off lights & appliances when not in use
- Switch lightbulbs to LEDs
- Install a smart thermostat at home
- Wash your clothes in cold water
- Upgrade to insulating curtains to keep the heat in
- Consider installing solar panels at home - more info: [www.countyofkane.org/sustainability/pages/solar.aspx](http://www.countyofkane.org/sustainability/pages/solar.aspx)
- Choose reusable items like shopping bags, water bottles, coffee mugs, utensils and drinking straws
- Upgrade to high-efficiency/Energy Star appliances



## CONSERVING & PROTECTING WATER

Stormwater runoff generated from rainwater and snowmelt can significantly contribute to water pollution. As water passes over impermeable surfaces, pollutants such as chemicals from vehicles, fertilizers, pesticides, sediment, and debris accumulate. These pollutants end up in streams, lakes, and other water bodies, contributing to poor water quality and posing potential risks to aquatic species. Here are some tips that residents can use to conserve water and reduce pollution:

- Install rain barrels to collect water from gutters; use collected rain to water the lawn and garden
- Upgrade to WaterSense fixtures (ComEd sells low-flow showerheads for as little as \$1 after rebates)
- Never dispose of medication, pesticides, or any other household chemicals down the drain (see pages 4&5)
- Plant drought-resistant native species
- Don't overwater - established landscaping only needs 1" per week to stay green in summer
- Always pick up after your pets
- Plant drought-resistant native plants and/or install a rain garden; lots of great info at [theconservationfoundation.org](http://theconservationfoundation.org)
- Use salt and deicing products sparingly and always sweep up any spills; 1 cup is enough for most driveways!

### RAIN BARRELS & COMPOST BINS

Available through Kane County's Spring Sale! More details on the Recycling website (see cover) in the spring. Or, call 630-208-8665 with questions!



For more information on energy & water conservation or County sustainability initiatives, please contact: Sarra Hinshaw, Sustainability Manager, [hinshawsarra@kanecountyil.gov](mailto:hinshawsarra@kanecountyil.gov) 630-208-8665



## FEEDBACK WELCOME!

This guide was produced by the Kane County Department of Environmental & Water Resources.

Please direct any questions or comments to (630) 208-3841 or [recycle@countyofkane.org](mailto:recycle@countyofkane.org).

All listing of private reuse and recycling services and businesses are illustrative and do not constitute County endorsement.

All information in this publication is believed to be accurate and up-to-date at time of publication. For the most up-to-date information, visit the program website at [www.countyofkane.org/recycling](http://www.countyofkane.org/recycling)



Kane County Connects is the official email newsletter and blog of Kane County Government, sharing key community news, events, and of course, recycling tips. Subscribe today at [kanecountyconnects.com](http://kanecountyconnects.com). KCC posts are also shared to the Kane County Government Facebook page!

## MAILING LIST

If you aren't already on our mailing list and would like a copy of the next Green Guide delivered to your door, please call (630) 208-3841 or email [recycle@countyofkane.org](mailto:recycle@countyofkane.org) to be added.



PRSRT STD  
U.S. POSTAGE  
**PAID**  
PERMIT NO. 693  
SAINT CHARLES, IL

## CURBSIDE WASTE COLLECTION CONTRACTS

IF YOU LIVE IN...	YOUR HAULER IS...	CONTACT
East Dundee, Hampshire*, Pingree Grove	Flood Brothers Disposal	(630) 261-0578
Algonquin*	Groot East	(847) 734-6400
Aurora*, Batavia*, North Aurora, Big Rock	Groot Aurora/SW	(630) 892-9294
Bartlett, Burlington*, Carpentersville, Elgin Township, Sleepy Hollow, South Elgin, West Dundee	Groot North	(847) 429-7370
Blackberry Township, Campton Hills, Campton Township, Elburn, Geneva*, Kaneville, Mill Creek SSA, Montgomery, Plato, St. Charles*, Sugar Grove*, Virgil	LRS	(844) 633-3577
Gilberts, Huntley	MDC Enviro. Services	(815) 568-7274
City of Elgin*, Maple Park, Prestbury, Sun City by Del Webb	WM	(800) 964-8988

\* = contract applies to municipality only, not to Township of the same name