



# Kane County

1996 S. Kirk Rd. Suite 320  
Geneva, IL 60134

## Forest Preserve District, Planning and Utilization Committee

### Agenda

President Bill Lenert, Chair Cherryl Strathmann, Vice-Chair Deborah Allan, Alex Arroyo,  
Mavis Bates, Dale Berman, Chris Kious, Myrna Molina, Ted Penesis

---

**Thursday, August 28, 2025**

**9:30 AM**

**3rd Floor Board Room**

---

**I. Call To Order**  
**Remote Attendance Approval**

**II. Approval of Minutes from June 26, 2025**

**III. Public Comment (Each Speaker is limited to three minutes)**

**IV. Bids and Proposals**

[\*\*TMP-25-1015\*\*](#) Resolution Approving a Bid for the Resurfacing of Hughes Creek Golf Club Cart Paths and New Cart Path Construction at Settler's Hill Golf Course

[\*\*TMP-25-1012\*\*](#) Resolution Authorizing a Bid For Native Seed Purchases to Restore Lands at Various Preserves

[\*\*TMP-25-1013\*\*](#) Resolution Approving Bids for Tree and Brush Clearing at Portions of 11 Forest Preserves

**V. New or Unfinished Business**

[\*\*TMP-25-1033\*\*](#) Muirhead Springs Wildlife Observation Deck Presentation

[\*\*TMP-25-887\*\*](#) Resolution Authorizing the District To Apply for IDNR OSLAD Grant Funds for a Wildlife Observation Platform and Supporting Improvements at Muirhead Springs Forest Preserve

**VI. Closed Session to Discuss Land Acquisition, License Agreements, Potential Litigation and Personnel**

**VII. Communications**

**VIII. Chairman's Comments**

**IX. Adjournment**

**Adjournment until: Thursday, September 25, 2025 at 9:30 a.m. in person at the Forest Preserve District Administration Offices 1996 S. Kirk Road, Suite 320 Geneva, Illinois and via zoom**

**<https://zoom.us/j/6302325980?pwd=aURTSGJoRlVJNDRCcHJXd3dvaVVrUT09>**

**Meeting ID: 630 232 5980 Password: 24680 The Request to Speak Form on the Districts' website must still be completed for guests to speak at the meeting.**

STATE OF ILLINOIS )

SS.

COUNTY OF KANE )

**FP RESOLUTION NO. TMP-25-1015**

**RESOLUTION APPROVING A BID FOR THE RESURFACING OF HUGHES CREEK GOLF CLUB CART PATHS AND NEW CART PATH CONSTRUCTION AT SETTLER'S HILL GOLF COURSE**

WHEREAS, bids have been solicited and received for the resurfacing of approximately 0.87 miles of cart paths at Hughes Creek Golf Club and constructing approximately 0.22 miles of new cart paths at Settler's Hill Golf Course; and

WHEREAS, the District has deemed it necessary to resurface a portion of Hughes Creek Golf Club as part of the District's Preventative Maintenance Program; and

WHEREAS, the District has found it desirable to construct new cart paths at Settler's Hill Golf Course so that golfers may return to the existing clubhouse after holes nine and/or eighteen; and

WHEREAS, the lowest, qualified bidder for both projects is Maneval Construction, of Ingleside, IL, with a combined base bid of \$270,365.70. Additionally, a contingency of \$27,036.57 shall be set aside to cover any unanticipated additional costs that may arise during construction, for a total contract amount not to exceed \$297,402.27.

NOW, THEREFORE, BE IT RESOLVED that the Forest Preserve District of Kane County, Kane County, Illinois, Board of Commissioners that the lowest, qualified bid from Maneval Construction of Ingleside, Illinois for \$270,365.70, plus a contingency of \$27,036.57 for a total contract amount not to exceed \$297,402.27 be, and hereby is, accepted and approved.

APPROVED AND PASSED on this 9th day of September, 2025.

Bill Lenert  
President, Kane Forest Preserve  
Kane County, Illinois

Mohammad Iqbal  
Secretary, Kane Forest Preserve  
Kane County, Illinois



# AGENDA MEMORANDUM

---

**DATE:** September 9, 2025

**TO:** Forest Preserve District Planning & Utilization Committee

**FROM:** Zach Tegge, Landscape Architect  
Benjamin Haberthur, Executive Director

**SUBJECT:** Presentation and Approval of a Bid for the Resurfacing of Hughes Creek Golf Club Cart Paths and New Cart Path Construction at Settler's Hill Golf Course

---

## **PURPOSE:**

The purpose of this memorandum is to provide the Committee with information to consider the approval of bids for the resurfacing of a portion of cart paths at Hughes Creek Golf Club in Elburn and additional cart paths at Settler's Hill Golf Course in Batavia.

## **BACKGROUND:**

The existing cart paths at Hughes Creek Golf Club were installed in phases from the late 1990s to the early 2000s and are showing significant signs of deterioration and failure in large sections. In early 2025, half of hole #4 up to hole #9 green were resurfaced. This project will focus on pulverizing-in-place and resurfacing cart paths near the clubhouse, from hole #1 to the bridge at hole #4. Additionally, minor path adjustments will be made near the clubhouse and at green #1. The additional surface course will add approximately 3" of height to the path, and will be backfilled and seeded to maintain a smooth transition. In between holes #3 and #4, additional portions of the cart path will be converted from decomposed granite to either limestone or asphalt.

The Settler's Hill Golf Course underwent a major renovation in 2022; the whole course was redesigned, a driving range was added and the new course was laid out in such a manner as to create a "returning nines" flow centered on a future clubhouse location. Conceptual engineering in 2023 on a minimally-acceptable clubhouse proved to be prohibitively expensive at an estimated cost of \$12M. The golf course architect from the course's redesign, Greg Martin, was consulted to revise the course hole numbering to apply the returning nines concept with the existing clubhouse as the hub. This revision involves building a new path from the current tee box at #6 and connect to current tee box #15. A new split path will be built just west of the clubhouse to allow golfers to drive up to the new #10 tee and return down the same path after the new #18 (see map).

The bid was publicly advertised and the qualified, lowest bidder was Maneval Construction of Ingleside, Illinois, with a base bid cost of \$270,365.70 to complete both projects. Additionally, a contingency of \$27,036.57 shall be set aside to cover any unanticipated construction costs, bringing the total overall project cost to \$297,402.27.

## **FINANCIAL IMPACT:**

Funds totaling \$300,000 were budgeted and are available for FY 2025/26 in Land Area Development for Settler's Hill Golf Course; account 03-99-02-7050 (\$150,000), Project #60000 (Settler's Hill Golf Course) and

Project #60001 (\$150,000, Hughes Creek Golf Club). The savings from project #60000 at Settler's Hill Golf Course will be used to cover the excess amount for the Hughes Creek Golf Club, project # 60001.

**RECOMMENDATION:**

Staff is recommending the approval of the bid with Maneval Construction for a total not to exceed \$297,402.27.

**ATTACHMENTS:**

*Memo-GolfCourses-Mandeval.docx*

*CountyLocMap\_Hughes Creek Golf Club.jpg*

*HughesCreek-PhaseIIBaseBidPlan.jpg*

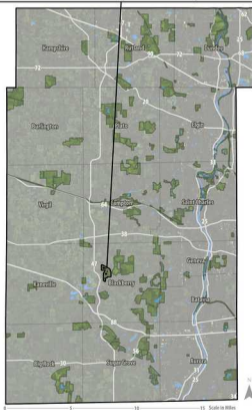
*CountyLocMap\_Settler's Hill Golf Course.jpg*

*SettlersHill-NewLayoutPlan.jpg*

*BidAbstract8.12.25.jpg*



## Hughes Creek Golf Club Kane County Location Map

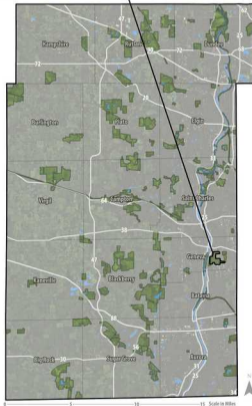


6





## Settler's Hill Golf Course Kane County Location Map



# Settler's Hill Golf Course New Cart Path Exhibit





## ABSTRACT OF BIDS

### Settler's Hill and Hughes Creek Golf Cart Path Improvements

SB-FP-05-2526 PROJECT NUMBER

| Bidder's Name  | Maneval Construction Co, Inc. | Obsidian Asphalt Paving | Provantage Systems, Inc. |
|--|-------------------------------|-------------------------|--------------------------|
| City, State  | Ingleside, IL                 | West Chicago, IL        | St. Charles, IL          |
| <b>Settler's Hill Base Bid Items-</b> Adding brand new cart paths west of the clubhouse and near the western edge of the course in order to promote a 'returning nines' style of play. Golfers can expect to play the outer ring of 9 holes and return to the clubhouse, or finish the interior loop of 9 holes and return to clubhouse.           | \$105,284.70                  | \$183,282.34            | No Bid                   |
| <b>Hughes Creek Base Bid Items-</b> Grinding and resurfacing the cart paths starting at hole 1 and ending at the halfway point on hole 4, where the bridge crosses Hughes Creek. Several smaller sections of paths will be re-worked near the clubhouse and adjacent to green #1 to promote smoother turning transitions and eliminate redundancy. | \$165,081.00                  | \$166,728.48            | \$233,685.33             |
| <b>Hughes Creek Alternate #1-</b> Grinding and resurfacing of cart paths on holes 16-18, approximately 1,818 square yards  | \$88,804.00                   | \$79,069.54             | \$118,121.16             |
| <b>Hughes Creek Alternate #2-</b> Grinding and resurfacing of cart paths on holes 10-15, approximately 4,966 square yards  | \$203,758.50                  | \$178,149.40            | \$239,127.81             |

I have certified that I have opened, read and recorded all bids received in response to the invitation

David Petschke, Director of Finance

STATE OF ILLINOIS     )  
COUNTY OF KANE     )                     SS.

SS.

COUNTY OF KANE )

**FP RESOLUTION NO. TMP-25-1012**

## RESOLUTION AUTHORIZING A BID FOR NATIVE SEED PURCHASES TO RESTORE LANDS AT VARIOUS PRESERVES

WHEREAS, it has been determined by the Commissioners of the Forest Preserve District of Kane County, Illinois, that the District desires to restore lands through a purchase of native seed for conversion of agricultural lands, prairie restoration, woodland restoration, and habitat creation; and

WHEREAS, native plants are the basis of all native ecosystems and therefore are the basis of our work in the Natural Resource Management department; and

WHEREAS, bids have been solicited and received for the purchase of native seed; the qualified, lowest bids were received from Shooting Star Nursery, Genesis Nursery, Agrecol, RES Great Lakes, Spence Restoration Nursery, and Millborn Seeds for Projects 1 and 2, as listed below:

Project 1 - Rutland North Forest Preserve (172 acres):

Agrecol - 11 species: Bid of \$16,521.00

Genesis Nursery - 5 species: Bid of \$12,079.08

Millborn Seeds - 42 species: Bid of \$35,079.62

RES Great Lakes - 17 species: Bid of \$10,700.75

Spence Restoration Nursery - 15 species: Bid of \$19,848.60

Shooting Star Native Seed - 43 species: Bid of \$42,082.60

Total: 133 species - \$136,311.65

### Project 2 - Johnson's Mound Forest Preserve (87 acres):

Agrecol - 6 species: Bid of \$8,420.00

Genesis Nursery - 2 species: Bid of \$2,960.00

**Millborn Seeds - 31 species: Bid of \$26,244.00**

RES Great Lakes - 5 species: Bid of \$3,415.00

Spence Restoration Nursery - 11 species: Bid of \$5,433.60

Shooting Star Native Seed - 23 species: Bid of \$27,081.00

Total: 78 species - \$73,553.60

NOW, THEREFORE, BE IT RESOLVED that the Commissioners of the Forest Preserve District of Kane County, Kane County, Illinois, that the qualified, lowest bids by Shooting Star Nursery in the amount of \$69,163.60, Genesis Nursery in the amount of \$15,039.08, Agrecol in the amount of \$24,941.00, RES Great Lakes in the amount of \$14,115.75, Spence Restoration Nursery in the amount of \$25,282.20, and Millborn Seeds in the amount of \$61,323.62, as listed above, for the purchase of native seed for the conversion of agricultural lands, prairie restoration, woodland restoration, and habitat creation in the total amount of \$209,865.25 be, and hereby are, accepted and approved.

APPROVED AND PASSED on this 9th day of September, 2025.

---

Bill Lenert  
President, Kane Forest Preserve  
Kane County, Illinois

---

Mohammad Iqbal  
Secretary, Kane Forest Preserve  
Kane County, Illinois



# AGENDA MEMORANDUM

---

**DATE:** August 28, 2025

**TO:** Forest Preserve District Planning and Utilization Committee

**FROM:** Patrick Chess, Director of Natural Resources  
Benjamin Haberthur, Executive Director

**SUBJECT:** Presentation and Approval of a Bid for Native Seed Purchases to Restore Lands at Various Preserves

---

**PURPOSE:**

The purpose of this memorandum is to provide the Committee with information to consider the approval of a bid for native seed purchases for 2025/26 Natural Resource Management restoration projects.

**BACKGROUND:**

Native plants are the basis of all native ecosystems, and therefore are the basis of our work in the Natural Resource Management department. Our native insects coevolved with these plants, and cannot survive on imported plants. In turn, all of our fauna that prey upon our native insects cannot do so if those insects are not present, due to non-native or low-diversity plants occupying the space of our native plants.

This year's seed bid represents a project-driven approach to determining seed needs. This is the fourth-year mixes were bid by option with seeds bagged by species. This approach both maximizes value and ensures quality of the delivered product. All of the seed specified in our bid is slated to go onto the ground this winter, to support ongoing restoration projects.

The bid was publicly advertised with six vendors responding. The bid was advertised with the following three projects:

**Project 1 – Rutland North Forest Preserve:** 133 species to be sown across an approximately 172-acre field at Rutland North Forest Preserve in Hampshire. The restoration is a new agricultural-to-tallgrass prairie restoration, located across the entirety of the preserve. This will result in the retirement of the remaining agricultural land on site, in accordance with the specifications laid out through the Illinois Clean Energy Community Foundation grant that helped with the initial acquisition.

**Project 2 – Johnson's Mound Forest Preserve:** 78 species to be sown across an approximately 87-acre field at the Elburn preserve. This planting is an agricultural-to-tallgrass prairie conversion that will retire a hillside above Blackberry Creek.

The qualified, lowest bid for each species was tabulated, with awards for each project going to all five vendors. The qualified lowest bids are as follows:

**Project 1 – Agrecol LLC – 11 species:** Bid of \$16,521.00

Genesis Nursery – 5 species: Bid of \$12,079.08

Millborn Seeds – 42 species: Bid of \$35,079.62

RES Great Lakes – 17 species: Bid of \$10,700.75

Spence Restoration Nursery – 15 species: Bid of \$19,848.60

Shooting Star Native Seed – 43 species: Bid of \$42,082.60

Total: 133 species - \$136,311.65

**Project 2 – Agrecol – 6 species: Bid of \$8,420.00**

Genesis Nursery – 2 species: Bid of \$2,960.00

Millborn Seeds – 31 species: Bid of \$26,244.00

RES Great Lakes – 5 species: Bid of \$3,415.00

Spence Restoration Nursery – 11 species: Bid of \$5,433.60

Shooting Star Native Seed – 23 species: Bid of \$27,081.00

Total: 78 species - \$73,553.60

**FINANCIAL IMPACT:**

Funds totaling \$85,000 were budgeted in Fiscal Year 2025/26 in the Construction & Development Restoration Account (03-31-31-7060) for the ICECF Grant Project (#21015). Those funds were received through the ICECF acquisition grant to fund a portion of the site restoration, at an average of \$500/acre, for seed purchase. All \$85,000 budgeted are currently available to cover a portion of the total of Project 1 (\$136,311.65).

Funds totaling \$240,000 were budgeted in Fiscal Year 2025/26 in the General Fund Native Seed and Plants Account (#01-31-31-6035). Sufficient funds totaling \$240,000 are available in this account, for the remaining expense of Project 1 at \$51,311.65 and the total of Project 2 at \$73,553.60, for a total expense of 124,865.25. The total cost of both projects is \$209,865.25.

**RECOMMENDATION:**

Staff recommends the Committee approve the bids for Projects 1 and 2 of this native seed purchase, with seed from each project coming from six different vendors. The total purchase from Agrecol is for 17 species at a total cost of \$24,941.00. The purchase from Genesis Nursery is for seven species at a total cost of \$15,039.08. The purchase from Millborn is for 73 species at a total cost of \$61,323.62. The purchase from RES Great Lakes is for 22 species at a total cost of \$14,115.75. The purchase from Spence Restoration Nursery is for 26 species at a total expense of \$25,282.20. The purchase from Shooting Star Native Seed is for 66 species at a total expense of \$69,163.60. The grand total for all purchases is for 211 species at a total expense of \$209,865.25.

**ATTACHMENTS:**

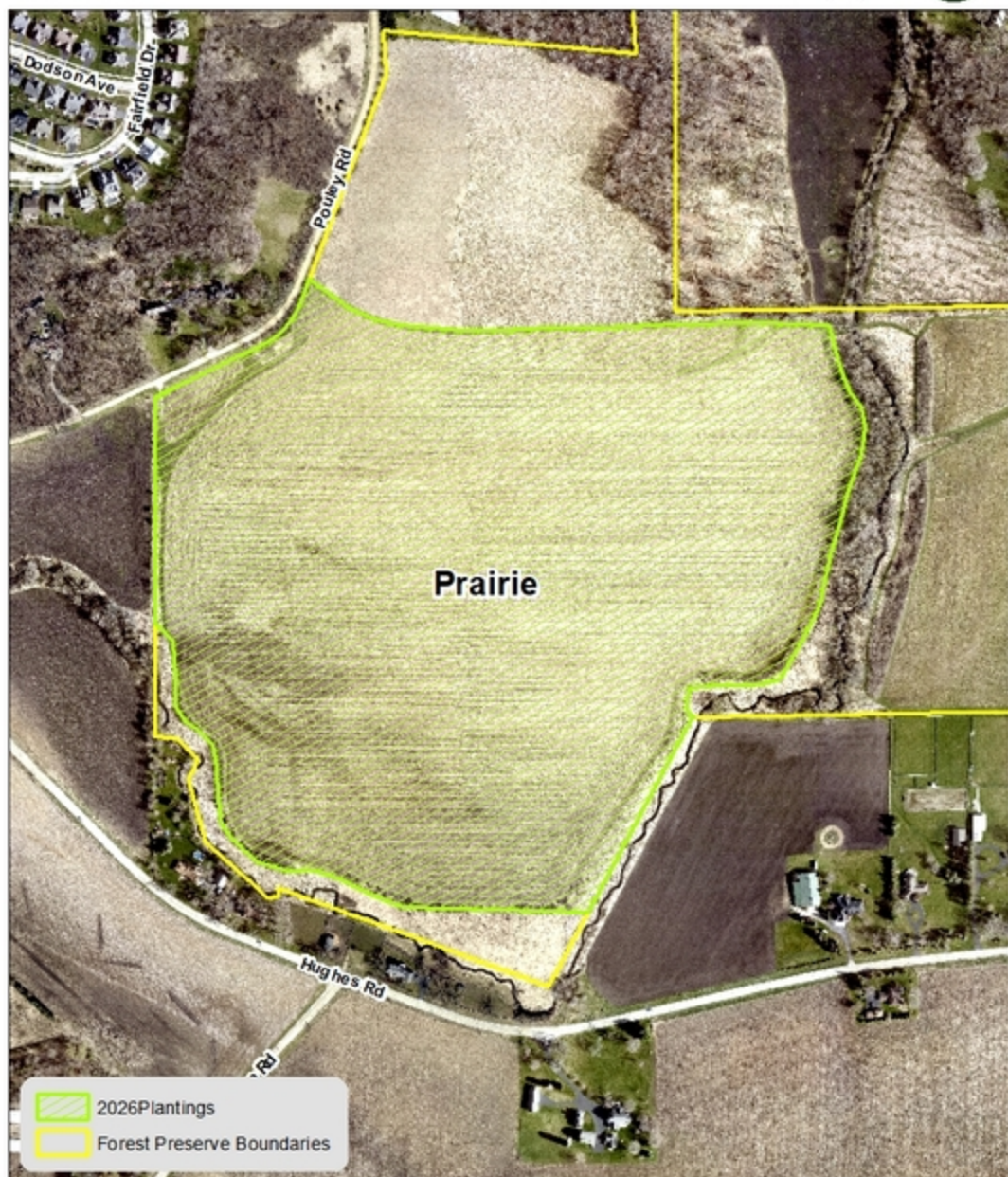
*County Locator Map*

*Rutland North Project Area Map*

*Johnson's Mound F.P. Project Area Map*

*Bid Abstract*

Johnson's Mound FP  
87 acres



0 250 500 1,000 Feet

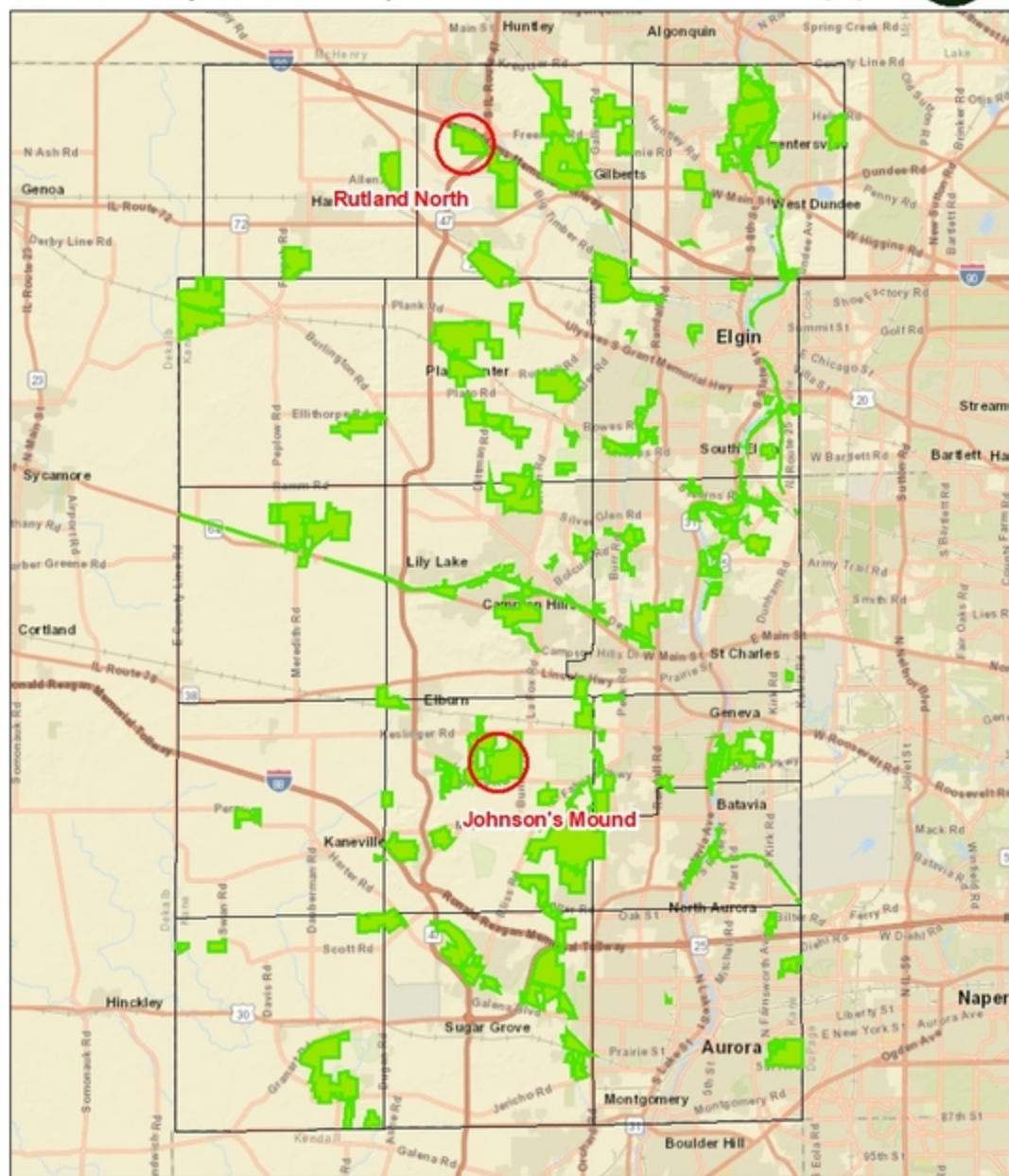
Map Created February 2025; 2024 Air Photo

Rutland North FP  
172 acres



Map Created February 2025; 2024 Air Photo

# Seed Purchase Kane County Locator Map



0 2 4 8 Miles

Map Created August, 2025; ESRI Basemap



## ABSTRACT OF BIDS

### DONAHUE AND JOHNSON'S MOUND SEED BID

SB-FP-03-2526

| Bidder's Name                      | Agrecol LLC    | Genesis Nursery, Inc. | Millborn Seeds | Resource Environmental Solutions / Taylor Creek Restoration Nurseries | Spence Restoration Nursery | Shooting Star Natives Seeds |
|------------------------------------|----------------|-----------------------|----------------|---|----------------------------|-----------------------------|
| City, State                        | Evansville, WI | Tampico, IL           | Brookings, SD  | Brodhead, WI  | Muncie, IN                 | Spring Grove, MN            |
| Project 1: Donahue Seed            | 16,521.00      | 12,079.08             | 35,079.62      | 10,700.75   | 19,848.60                  | 42,082.60                   |
| Project 2: Johnson's Mound Seed    | 8,420.00       | 2,960.00              | 26,244.00      | 3,415.00  | 5,433.60                   | 27,081.00                   |
| Total Bid Award (Projects 1 and 2) | 24,941.00      | 15,039.08             | 61,323.62      | 14,115.75   | 25,282.20                  | 69,163.60                   |

I have certified that I have opened, read and recorded all bids received in response to the invitation.

David Petschke, Director of Finance

|       |                             |                              |                    | Agrecol LLC | Genesis Nursery, Inc. | Millborn Seeds | Resource Environmental<br>Solutions / Taylor Creek<br>Restoration Nurseries | Spence Restoration<br>Nursery | Shooting Star<br>Natives Seeds |
|-------|-----------------------------|------------------------------|--------------------|-------------|-----------------------|----------------|---|-------------------------------|--------------------------------|
|       |                             |                              |                    | \$24,941.00 | \$ 15,039.08          | \$ 61,323.62   | \$ 14,115.75  | \$ 25,282.20                  | \$ 69,163.60                   |
| #     | Items                       | CommonName                   | Ounces<br>Required |             |                       |                |   |                               |                                |
| 1     | Donhue Seed                 |                              |                    |             |                       |                |   |                               |                                |
| #1-1  | Agalinis purpurea           | Purple False Foxglove        | 1                  | No Bid      | No Bid                | No Bid         | No Bid  | No Bid                        | No Bid                         |
| #1-2  | Agalinus tenuifolia         | Slender False Foxglove       | 4                  | No Bid      | No Bid                | No Bid         | \$ 240.00   | No Bid                        | No Bid                         |
| #1-3  | Allium cernuum              | Nodding Onion                | 323                | No Bid      | No Bid                | \$ 4,037.50    | No Bid  | No Bid                        | \$ 3,230.00                    |
| #1-4  | Amorpha canescens           | Lead Plant                   | 160                | No Bid      | No Bid                | \$ 448.00      | No Bid  | \$ 960.00                     | No Bid                         |
| #1-5  | Andropogon gerardii         | Big Bluestem                 | 656                | \$ 492.00   | No Bid                | \$ 209.92      | No Bid  | \$ 328.00                     | \$ 229.60                      |
| #1-6  | Anemone canadensis          | Canada Anemone               | 76                 | \$ 1,900.00 | No Bid                | No Bid         | No Bid  | No Bid                        | \$ 2,052.00                    |
| #1-7  | Anemone cylindrica          | Thimbleweed                  | 64                 | No Bid      | No Bid                | No Bid         | No Bid  | No Bid                        | No Bid                         |
| #1-8  | Antennaria neglecta         | Prairie Pussytoes            | 8                  | No Bid      | No Bid                | No Bid         | No Bid  | No Bid                        | No Bid                         |
| #1-9  | Antennaria plantaginifolia  | Pussytoes                    | 8                  | No Bid      | No Bid                | No Bid         | No Bid  | No Bid                        | No Bid                         |
| #1-10 | Arnoglossum atriplicifolium | Pale Indian Plantain         | 320                | No Bid      | No Bid                | No Bid         | No Bid  | No Bid                        | No Bid                         |
| #1-11 | Asclepias incarnata         | Rose Milkweed                | 80                 | No Bid      | \$ 500.00             | \$ 328.00      | No Bid  | \$ 1,500.00                   | \$ 736.00                      |
| #1-12 | Asclepias purpurascens      | Purple Milkweed              | 16                 | No Bid      | No Bid                | No Bid         | No Bid  | No Bid                        | No Bid                         |
| #1-13 | Asclepias sullivantii       | Prairie Milkweed             | 64                 | No Bid      | No Bid                | No Bid         | No Bid  | \$ 4,800.00                   | No Bid                         |
| #1-14 | Asclepias syriaca           | Common Milkweed              | 320                | \$ 1,600.00 | \$ 1,801.60           | \$ 1,600.00    | No Bid  | No Bid                        | \$ 1,520.00                    |
| #1-15 | Asclepias tuberosa          | Butterfly Weed               | 192                | No Bid      | No Bid                | \$ 4,147.20    | No Bid  | No Bid                        | \$ 5,568.00                    |
| #1-16 | Asclepias verticillata      | Whorled Milkweed             | 96                 | No Bid      | No Bid                | No Bid         | \$ 5,760.00   | No Bid                        | \$ 3,408.00                    |
| #1-17 | Astragalus canadensis       | Canada Milk Vetch            | 112                | No Bid      | \$ 210.56             | \$ 56.00       | No Bid  | No Bid                        | \$ 336.00                      |
| #1-18 | Baptisia bracteata          | Cream Wild Indigo            | 96                 | No Bid      | \$ 4,800.00           | No Bid         | \$ 7,680.00   | No Bid                        | No Bid                         |
| #1-19 | Baptisia lactea             | White Wild Indigo            | 400                | No Bid      | \$ 2,500.00           | \$ 3,400.00    | No Bid  | No Bid                        | \$ 3,700.00                    |
| #1-20 | Blephilia ciliata           | Ohio Horse Mint              | 2                  | No Bid      | No Bid                | \$ 280.00      | No Bid  | No Bid                        | \$ 240.00                      |
| #1-21 | Blephilia hirsuta           | Hairy Wood Mint              | 1                  | No Bid      | No Bid                | No Bid         | \$ 77.00  | No Bid                        | No Bid                         |
| #1-22 | Bouteloua curtipendula      | Side Oats                    | 4800               | No Bid      | \$ 6,624.00           | \$ 5,040.00    | \$ 14,400.00  | No Bid                        | \$ 5,280.00                    |
| #1-23 | Brickellia eupatorioides    | False Boneset                | 64                 | No Bid      | No Bid                | No Bid         | \$ 2,240.00   | No Bid                        | \$ 1,792.00                    |
| #1-24 | Bromus ciliatus             | Fringed Brome                | 8                  | No Bid      | No Bid                | No Bid         | No Bid  | No Bid                        | No Bid                         |
| #1-25 | Bromus kalmii               | Prairie Brome                | 400                | No Bid      | \$ 2,124.00           | \$ 1,500.00    | No Bid  | No Bid                        | No Bid                         |
| #1-26 | Calamagrostis canadensis    | Blue Joint Grass             | 4                  | \$ 320.00   | No Bid                | \$ 250.00      | \$ 316.00   | No Bid                        | \$ 248.00                      |
| #1-27 | Caltha palustris            | Marsh Marigold               | 1                  | No Bid      | No Bid                | No Bid         | \$ 75.00  | No Bid                        | No Bid                         |
| #1-28 | Camassia scilloides         | Wild Hyacinth                | 70                 | No Bid      | No Bid                | No Bid         | \$ 3,850.00   | No Bid                        | No Bid                         |
| #1-29 | Carex annectens             | Small Yellow Fox Sedge       | 16                 | No Bid      | No Bid                | \$ 16.00       | \$ 224.00   | \$ 148.80                     | No Bid                         |
| #1-30 | Carex bebbii                | Bebb's Oval Sedge            | 6                  | No Bid      | No Bid                | No Bid         | \$ 90.00  | No Bid                        | \$ 144.00                      |
| #1-31 | Carex bicknellii            | Copper-shouldered Oval Sedge | 352                | \$ 8,800.00 | No Bid                | \$ 5,508.80    | \$ 5,808.00   | No Bid                        | \$ 4,576.00                    |
| #1-32 | Carex blanda                | Common Wood Sedge            | 8                  | No Bid      | No Bid                | No Bid         | No Bid  | No Bid                        | No Bid                         |
| #1-33 | Carex brevior               | Plains Oval Sedge            | 336                | \$ 4,200.00 | No Bid                | No Bid         | \$ 3,696.00   | No Bid                        | No Bid                         |
| #1-34 | Carex cephalophora          | Short-headed Bracted Sedge   | 32                 | No Bid      | No Bid                | No Bid         | No Bid  | No Bid                        | No Bid                         |
| #1-35 | Carex cristatella           | Crested Sedge                | 16                 | No Bid      | No Bid                | No Bid         | No Bid  | No Bid                        | No Bid                         |
| #1-36 | Carex diandra               | Bog Panicle Sedge            | 16                 | No Bid      | No Bid                | No Bid         | No Bid  | No Bid                        | No Bid                         |
| #1-37 | Carex granularis            | Pale Sedge                   | 16                 | No Bid      | No Bid                | No Bid         | \$ 512.00   | No Bid                        | \$ 296.00                      |

|       |                          |                               |      |              |             |              |             |             |             |           |
|-------|--------------------------|-------------------------------|------|--------------|-------------|--------------|-------------|-------------|-------------|-----------|
| #1-38 | Carex gravida            | Long-awned Bracted Sedge      | 32   | No Bid       | No Bid      | \$ 428.80    | No Bid      | No Bid      | No Bid      | No Bid    |
| #1-39 | Carex lacustris          | Lake Sedge                    | 16   | No Bid       | No Bid      | \$ 848.00    | No Bid      | No Bid      | No Bid      | \$ 696.00 |
| #1-40 | Carex lasiocarpa         | Narrow Woolly Sedge           | 16   | No Bid       | No Bid      | No Bid       | No Bid      | No Bid      | No Bid      | No Bid    |
| #1-41 | Carex meadii             | Mead's Stiff Sedge            | 2    | No Bid       | No Bid      | No Bid       | No Bid      | No Bid      | No Bid      | No Bid    |
| #1-42 | Carex molesta            | Field Oval Sedge              | 32   | No Bid       | No Bid      | \$ 131.20    | No Bid      | No Bid      | No Bid      | \$ 240.00 |
| #1-43 | Carex molesta            | Field Oval Sedge              | 6    | No Bid       | No Bid      | \$ 24.60     | \$ 84.00    | No Bid      | No Bid      | \$ 45.00  |
| #1-44 | Carex normalis           | Spreading Oval Sedge          | 6    | No Bid       | No Bid      | No Bid       | \$ 99.00    | No Bid      | No Bid      | \$ 210.00 |
| #1-45 | Carex pellita            | Prairie Woolly Sedge          | 32   | No Bid       | No Bid      | No Bid       | No Bid      | No Bid      | No Bid      | No Bid    |
| #1-46 | Carex sartwellii         | Running Prairie Sedge         | 16   | No Bid       | No Bid      | No Bid       | No Bid      | No Bid      | No Bid      | No Bid    |
| #1-47 | Carex scoparia           | Lance-fruited Oval Sedge      | 8    | No Bid       | No Bid      | \$ 122.40    | \$ 80.00    | No Bid      | No Bid      | \$ 160.00 |
| #1-48 | Carex stricta            | Tussock Sedge                 | 16   | No Bid       | No Bid      | No Bid       | No Bid      | No Bid      | No Bid      | \$ 896.00 |
| #1-49 | Carex tribuloides        | Blunt Broom Sedge             | 6    | \$ 150.00    | No Bid      | \$ 36.00     | \$ 204.00   | No Bid      | No Bid      | No Bid    |
| #1-50 | Ceanothus americanus     | New Jersey Tea                | 32   | No Bid       | No Bid      | No Bid       | No Bid      | No Bid      | No Bid      | No Bid    |
| #1-51 | Chamaecrista fasciculata | Partridge Pea                 | 1200 | No Bid       | No Bid      | \$ 720.00    | No Bid      | No Bid      | No Bid      | \$ 660.00 |
| #1-52 | Chelone glabra           | Turtlehead                    | 4    | No Bid       | No Bid      | No Bid       | No Bid      | No Bid      | No Bid      | \$ 372.00 |
| #1-53 | Cicuta maculata          | Water Hemlock                 | 2    | No Bid       | No Bid      | No Bid       | \$ 32.00    | No Bid      | No Bid      | No Bid    |
| #1-54 | Cirsium discolor         | Pasture Thistle               | 16   | No Bid       | No Bid      | No Bid       | No Bid      | No Bid      | No Bid      | \$ 768.00 |
| #1-55 | Cirsium muticum          | Swamp Thistle                 | 2    | No Bid       | No Bid      | No Bid       | No Bid      | No Bid      | No Bid      | No Bid    |
| #1-56 | Comandra umbellata       | False Toadflax                | 4    | No Bid       | No Bid      | No Bid       | No Bid      | No Bid      | No Bid      | No Bid    |
| #1-57 | Coreopsis lanceolata     | Lance-Leaf Coreopsis          | 4    | No Bid       | No Bid      | No Bid       | No Bid      | \$ 44.00    | \$ 9.60     | No Bid    |
| #1-58 | Coreopsis palmata        | Prairie Coreopsis             | 160  | \$ 10,000.00 | No Bid      | \$ 10,000.00 | No Bid      | \$ 7,040.00 | \$ 7,200.00 | No Bid    |
| #1-59 | Coreopsis tripteris      | Tall Coreopsis                | 48   | No Bid       | No Bid      | \$ 1,051.20  | No Bid      | \$ 595.20   | No Bid      | No Bid    |
| #1-60 | Cyperus schweinitzii     | Rough Sand Sedge              | 32   | No Bid       | No Bid      | No Bid       | No Bid      | No Bid      | No Bid      | No Bid    |
| #1-61 | Dalea candida            | White Prairie Clover          | 160  | No Bid       | \$ 300.80   | \$ 96.00     | No Bid      | No Bid      | No Bid      | No Bid    |
| #1-62 | Dalea purpurea           | Purple Prairie Clover         | 320  | No Bid       | \$ 499.20   | \$ 160.00    | No Bid      | No Bid      | No Bid      | No Bid    |
| #1-63 | Danthonia spicata        | Poverty Oat Grass             | 8    | No Bid       | No Bid      | No Bid       | No Bid      | No Bid      | No Bid      | No Bid    |
| #1-64 | Desmodium canadense      | Showy Tick Trefoil            | 64   | \$ 640.00    | \$ 240.00   | \$ 144.00    | No Bid      | No Bid      | No Bid      | No Bid    |
| #1-65 | Desmodium illinoensis    | Illinois Tick Trefoil         | 160  | No Bid       | No Bid      | \$ 512.00    | No Bid      | No Bid      | No Bid      | No Bid    |
| #1-66 | Dodecatheon meadia       | Midland Shooting Star         | 32   | No Bid       | No Bid      | No Bid       | No Bid      | No Bid      | \$ 3,808.00 | No Bid    |
| #1-67 | Doellingeria umbellata   | Flat-top Aster                | 6    | No Bid       | No Bid      | \$ 150.00    | No Bid      | \$ 78.00    | No Bid      | No Bid    |
| #1-68 | Dryocallis arguta        | Prairie Cinquefoil            | 48   | \$ 240.00    | No Bid      | \$ 240.00    | No Bid      | No Bid      | No Bid      | No Bid    |
| #1-69 | Echinacea pallida        | Pale Purple Coneflower        | 1120 | No Bid       | \$ 2,800.00 | \$ 1,400.00  | No Bid      | No Bid      | No Bid      | No Bid    |
| #1-70 | Eleocharis acicularis    | Needle Spike Rush             | 6    | No Bid       | No Bid      | No Bid       | No Bid      | No Bid      | \$ 60.00    | No Bid    |
| #1-71 | Eleocharis compressa     | Flatstem Spike Rush           | 16   | No Bid       | No Bid      | No Bid       | No Bid      | No Bid      | No Bid      | No Bid    |
| #1-72 | Elymus canadensis        | Canada Wild Rye               | 1600 | \$ 5,000.00  | No Bid      | No Bid       | No Bid      | \$ 2,200.00 | \$ 1,760.00 | No Bid    |
| #1-73 | Epilobium coloratum      | Cinnamon Willow Herb          | 1    | No Bid       | No Bid      | No Bid       | \$ 60.00    | No Bid      | No Bid      | No Bid    |
| #1-74 | Eragrostis spectabilis   | Purple Love Grass             | 32   | No Bid       | No Bid      | No Bid       | No Bid      | No Bid      | No Bid      | No Bid    |
| #1-75 | Eryngium yuccifolium     | Rattlesnake Master            | 400  | No Bid       | \$ 4,624.00 | \$ 1,640.00  | \$ 6,000.00 | No Bid      | No Bid      | No Bid    |
| #1-76 | Eupatorium perfoliatum   | Boneset                       | 2    | No Bid       | No Bid      | \$ 50.00     | \$ 64.00    | No Bid      | \$ 56.00    | No Bid    |
| #1-77 | Euphorbia corollata      | Flowering Spurge              | 64   | No Bid       | \$ 2,600.32 | No Bid       | No Bid      | No Bid      | No Bid      | No Bid    |
| #1-78 | Euthamia graminifolia    | Grass-leaved Goldenrod        | 16   | \$ 1,000.00  | No Bid      | \$ 1,000.00  | No Bid      | \$ 960.00   | \$ 768.00   | No Bid    |
| #1-79 | Euthamia gymnospermoides | Plains Grass-leaved Goldenrod | 4    | No Bid       | No Bid      | No Bid       | No Bid      | No Bid      | No Bid      | No Bid    |
| #1-80 | Eutrochium maculatum     | Joe Pye Weed                  | 4    | \$ 80.00     | No Bid      | \$ 75.00     | \$ 96.00    | \$ 115.00   | \$ 75.00    | No Bid    |
| #1-81 | Galium boreale           | Northern Bedstraw             | 4    | No Bid       | No Bid      | No Bid       | No Bid      | No Bid      | \$ 392.00   | No Bid    |
| #1-82 | Gaura biennis            | Biennial Gaura                | 128  | No Bid       | No Bid      | No Bid       | No Bid      | No Bid      | No Bid      | No Bid    |

|        |                           |                               |       |             |           |             |           |          |             |             |        |
|--------|---------------------------|-------------------------------|-------|-------------|-----------|-------------|-----------|----------|-------------|-------------|--------|
| #1-83  | Gentiana andrewsii        | Bottle Gentian                | 3     | No Bid      | No Bid    | No Bid      | No Bid    | No Bid   | No Bid      | No Bid      | No Bid |
| #1-84  | Gentianella quinquefolia  | Stiff Gentian                 | 4     | No Bid      | No Bid    | No Bid      | No Bid    | No Bid   | No Bid      | No Bid      | No Bid |
| #1-85  | Geum triflorum            | Prairie Smoke                 | 4     | No Bid      | No Bid    | No Bid      | No Bid    | No Bid   | No Bid      | \$ 1,000.00 |        |
| #1-86  | Glyceria striata          | Fowl Manna Grass              | 8     | No Bid      | No Bid    | \$ 56.00    | \$        | 152.00   | No Bid      | No Bid      | No Bid |
| #1-87  | Helenium autumnale        | Sneezeweed                    | 4     | No Bid      | No Bid    | \$ 28.00    | \$        | 72.00    | No Bid      | No Bid      | No Bid |
| #1-88  | Helianthus grosseserratus | Saw-tooth Sunflower           | 16    | No Bid      | \$ 600.00 | \$ 160.00   | \$        | 672.00   | No Bid      | \$ 280.00   |        |
| #1-89  | Helianthus mollis         | Downy Sunflower               | 80    | No Bid      | No Bid    | \$ 2,000.00 |           | No Bid   | No Bid      | No Bid      | No Bid |
| #1-90  | Helianthus occidentalis   | Western Sunflower             | 32    | No Bid      | No Bid    | No Bid      |           | No Bid   | No Bid      | No Bid      | No Bid |
| #1-91  | Helianthus pauciflorus    | Prairie Sunflower             | 64    | \$ 3,200.00 | No Bid    | No Bid      |           | No Bid   | No Bid      | No Bid      | No Bid |
| #1-92  | Heliopsis helianthoides   | Early Sunflower               | 272   | \$ 952.00   | \$ 340.00 | \$ 231.20   | \$        | 544.00   | \$ 2,720.00 | No Bid      |        |
| #1-93  | Hesperostipa spartea      | Porcupine Grass               | 96    | \$ 3,000.00 | No Bid    | No Bid      |           | No Bid   | No Bid      | \$ 1,056.00 |        |
| #1-94  | Heuchera richardsonii     | Prairie Alumroot              | 7     | \$ 630.00   | No Bid    | \$ 455.00   | \$        | 735.00   | No Bid      | No Bid      | No Bid |
| #1-95  | Hypericum punctatum       | Dotted St. John's Wort        | 2     | No Bid      | No Bid    | No Bid      |           | No Bid   | No Bid      | No Bid      | No Bid |
| #1-96  | Hypericum sphaerocarpum   | Round-fruited St. John's Wort | 4     | No Bid      | No Bid    | No Bid      |           | No Bid   | No Bid      | No Bid      | No Bid |
| #1-97  | Iris virginica shrevei    | Blue Flag Iris                | 16    | No Bid      | No Bid    | No Bid      |           | No Bid   | No Bid      | No Bid      | No Bid |
| #1-98  | Juncus dudleyi            | Dudley's Rush                 | 1     | \$ 60.00    | No Bid    | No Bid      | \$ 35.00  |          | No Bid      | \$ 37.00    |        |
| #1-99  | Juncus effusus            | Common Rush                   | 1     | \$ 20.00    | No Bid    | No Bid      | \$ 25.00  |          | No Bid      | \$ 18.75    |        |
| #1-100 | Juncus nodosus            | Knotted Rush                  | 1     | No Bid      | No Bid    | No Bid      |           | No Bid   | No Bid      | \$ 24.00    |        |
| #1-101 | Juncus torreyi            | Torrey's Rush                 | 1     | \$ 50.00    | No Bid    | No Bid      |           | No Bid   | No Bid      | No Bid      | No Bid |
| #1-102 | Koeleria macrantha        | June Grass                    | 80    | \$ 1,200.00 | No Bid    | \$ 1,000.00 | \$        | 1,360.00 | No Bid      | \$ 900.00   |        |
| #1-103 | Lespedeza capitata        | Round-headed Bush Clover      | 272   | No Bid      | No Bid    | No Bid      |           | No Bid   | \$ 5,712.00 | No Bid      | No Bid |
| #1-104 | Liatris aspera            | Button Blazing Star           | 160   | \$ 6,400.00 | No Bid    | No Bid      |           | No Bid   | No Bid      | No Bid      | No Bid |
| #1-105 | Liatris cylindracea       | Dwarf Blazing Star            | 64    | No Bid      | No Bid    | No Bid      |           | No Bid   | No Bid      | No Bid      | No Bid |
| #1-106 | Liatris pycnostachya      | Prairie Blazing Star          | 80    | \$ 1,200.00 | No Bid    | \$ 1,224.00 | \$        | 1,800.00 | No Bid      | \$ 980.00   |        |
| #1-107 | Lilium michiganense       | Michigan Lily                 | 4     | No Bid      | No Bid    | No Bid      |           | No Bid   | No Bid      | \$ 496.00   |        |
| #1-108 | Lilium philadelphicum     | Prairie Lily                  | 3     | No Bid      | No Bid    | No Bid      |           | No Bid   | No Bid      | No Bid      | No Bid |
| #1-109 | Lithospermum canescens    | Hoary Puccoon                 | 1     | No Bid      | No Bid    | No Bid      |           | No Bid   | No Bid      | No Bid      | No Bid |
| #1-110 | Lobelia cardinalis        | Cardinal Flower               | 1     | No Bid      | No Bid    | No Bid      | \$ 56.25  |          | No Bid      | \$ 70.00    |        |
| #1-111 | Lobelia siphilitica       | Great Blue Lobelia            | 4     | \$ 200.00   | No Bid    | \$ 75.00    | \$        | 144.00   | No Bid      | \$ 120.00   |        |
| #1-112 | Lobelia spicata           | Pale Spiked Lobelia           | 4.5   | No Bid      | No Bid    | No Bid      |           | No Bid   | No Bid      | No Bid      | No Bid |
| #1-113 | Lolium multiflorum        | Annual Rye Grass              | 28800 | No Bid      | No Bid    | \$ 1,440.00 |           | No Bid   | No Bid      | \$ 2,880.00 |        |
| #1-114 | Lycopus americanus        | American Bugleweed            | 1     | No Bid      | No Bid    | No Bid      |           | No Bid   | \$ 18.50    | No Bid      | No Bid |
| #1-115 | Lycopus uniflorus         | Bugleweed                     | 1     | No Bid      | No Bid    | No Bid      |           | No Bid   | No Bid      | No Bid      | No Bid |
| #1-116 | Lysimachia quadriflora    | Fen Loosestrife               | 1     | No Bid      | No Bid    | No Bid      |           | No Bid   | No Bid      | No Bid      | No Bid |
| #1-117 | Lythrum alatum            | Winged Loosestrife            | 0.25  | No Bid      | No Bid    | No Bid      | \$ 22.50  |          | No Bid      | No Bid      | No Bid |
| #1-118 | Maianthemum stellatum     | Starry False Solomon's Seal   | 4     | No Bid      | No Bid    | No Bid      |           | No Bid   | No Bid      | No Bid      | No Bid |
| #1-119 | Mentha canadensis         | Wild Mint                     | 1     | No Bid      | No Bid    | No Bid      |           | No Bid   | No Bid      | No Bid      | No Bid |
| #1-120 | Mimulus ringens           | Monkey Flower                 | 0.25  | No Bid      | No Bid    | No Bid      |           | No Bid   | No Bid      | No Bid      | No Bid |
| #1-121 | Monarda fistulosa         | Wild Bergamot                 | 86    | No Bid      | \$ 430.00 | \$ 348.30   | \$        | 1,075.00 | \$ 2,150.00 | \$ 1,032.00 |        |
| #1-122 | Oenothera pilosella       | Prairie Sundrops              | 2     | No Bid      | No Bid    | No Bid      |           | No Bid   | \$ 188.00   | No Bid      | No Bid |
| #1-123 | Oligoneuron albidum       | Upland White Goldenrod        | 48    | No Bid      | No Bid    | No Bid      | \$ 480.00 |          | No Bid      | No Bid      | No Bid |
| #1-124 | Oligoneuron ohioense      | Ohio Goldenrod                | 4     | No Bid      | No Bid    | No Bid      | \$ 88.00  | \$ 50.00 | \$          | 80.00       |        |
| #1-125 | Oligoneuron riddellii     | Riddell's Goldenrod           | 4     | No Bid      | No Bid    | \$ 83.60    | \$        | 120.00   | \$ 144.00   | No Bid      | No Bid |
| #1-126 | Oligoneuron rigidum       | Stiff Goldenrod               | 4     | \$ 40.00    | \$ 18.76  | No Bid      | \$        | 48.00    | \$ 50.00    | \$ 19.00    |        |
| #1-127 | Oxalis violacea           | Violet Wood Sorrel            | 2     | No Bid      | No Bid    | No Bid      |           | No Bid   | No Bid      | No Bid      | No Bid |
| #1-128 | Oxypolis rigidior         | Cowbane                       | 1     | No Bid      | No Bid    | No Bid      |           | No Bid   | No Bid      | No Bid      | No Bid |

|        |                                |                        |      |              |             |             |             |              |             |        |
|--------|--------------------------------|------------------------|------|--------------|-------------|-------------|-------------|--------------|-------------|--------|
| #1-129 | Packera plattensis             | Prairie Ragwort        | 2    | No Bid       | No Bid      | \$ 450.00   | No Bid      | No Bid       | No Bid      | No Bid |
| #1-130 | Panicum oligosanthos           | Scribner's Panic Grass | 16   | No Bid       | No Bid      | No Bid      | No Bid      | No Bid       | No Bid      | No Bid |
| #1-131 | Panicum virgatum               | Switch Grass           | 304  | No Bid       | \$ 191.52   | \$ 197.60   | No Bid      | \$ 152.00    | \$ 182.40   |        |
| #1-132 | Parthenium integrifolium       | Wild Quinine           | 192  | No Bid       | \$ 2,160.00 | No Bid      | No Bid      | \$ 3,072.00  | No Bid      |        |
| #1-133 | Pedicularis canadensis         | Wood Betony            | 64   | No Bid       | No Bid      | No Bid      | No Bid      | No Bid       | No Bid      |        |
| #1-134 | Pedicularis lanceolata         | Marsh Betony           | 6    | No Bid       | No Bid      | No Bid      | No Bid      | No Bid       | No Bid      |        |
| #1-135 | Penstemon digitalis            | Foxglove Beardtongue   | 32   | \$ 480.00    | \$ 144.00   | \$ 131.20   | \$ 288.00   | \$ 192.00    | \$ 176.00   |        |
| #1-136 | Penstemon hirsutus             | Hairy Beardtounge      | 3    | No Bid       | No Bid      | No Bid      | \$ 54.00    | \$ 57.00     | \$ 52.50    |        |
| #1-137 | Phlox glaberrima var. interior | Marsh Phlox            | 3    | No Bid       | No Bid      | No Bid      | No Bid      | No Bid       | No Bid      |        |
| #1-138 | Phlox pilosa                   | Prairie Phlox          | 8    | No Bid       | No Bid      | No Bid      | No Bid      | No Bid       | No Bid      |        |
| #1-139 | Physostegia virginiana         | Obedient Plant         | 8    | No Bid       | No Bid      | \$ 125.20   | No Bid      | \$ 150.00    | \$ 110.00   |        |
| #1-140 | Poa palustris                  | Fowl Bluegrass         | 8    | No Bid       | No Bid      | No Bid      | No Bid      | No Bid       | No Bid      |        |
| #1-141 | Polygala senega                | Seneca Snakeroot       | 4    | No Bid       | No Bid      | No Bid      | No Bid      | No Bid       | No Bid      |        |
| #1-142 | Polytaenia nuttallii           | Prairie Parsley        | 4    | No Bid       | No Bid      | No Bid      | No Bid      | No Bid       | No Bid      |        |
| #1-143 | Prenanthes racemosa            | Smooth Prairie Lettuce | 2    | No Bid       | No Bid      | No Bid      | No Bid      | No Bid       | No Bid      |        |
| #1-144 | Pseudognaphalium obtusifolium  | Sweet Everlasting      | 4    | No Bid       | No Bid      | No Bid      | No Bid      | No Bid       | No Bid      |        |
| #1-145 | Pycnanthemum virginianum       | Mountain Mint          | 18   | \$ 540.00    | \$ 337.50   | \$ 394.20   | \$ 540.00   | \$ 810.00    | \$ 306.00   |        |
| #1-146 | Ranunculus scleratus           | Annual Buttercup       | 1    | No Bid       | No Bid      | No Bid      | No Bid      | No Bid       | No Bid      |        |
| #1-147 | Ratibida pinnata               | Yellow Coneflower      | 176  | No Bid       | No Bid      | \$ 246.40   | \$ 660.00   | \$ 660.00    | \$ 528.00   |        |
| #1-148 | Rosa blanda                    | Early Wild Rose        | 8    | \$ 600.00    | No Bid      | \$ 200.00   | No Bid      | No Bid       | \$ 160.00   |        |
| #1-149 | Rosa carolina                  | Pasture Rose           | 16   | No Bid       | No Bid      | No Bid      | No Bid      | No Bid       | No Bid      |        |
| #1-150 | Rosa palustris                 | Swamp Rose             | 1    | No Bid       | No Bid      | No Bid      | No Bid      | No Bid       | \$ 31.00    |        |
| #1-151 | Rudbeckia hirta                | Black-eyed Susan       | 160  | No Bid       | \$ 150.40   | \$ 96.00    | \$ 320.00   | No Bid       | No Bid      |        |
| #1-152 | Rudbeckia subtomentosa         | Sweet Black-eyed Susan | 32   | \$ 160.00    | No Bid      | \$ 160.00   | \$ 512.00   | \$ 179.20    | \$ 160.00   |        |
| #1-153 | Rudbeckia triloba              | Brown-eyed Susan       | 80   | No Bid       | \$ 200.00   | \$ 120.00   | \$ 880.00   | No Bid       | No Bid      |        |
| #1-154 | Ruellia humilis                | Wild Petunia           | 16   | \$ 400.00    | No Bid      | No Bid      | No Bid      | No Bid       | No Bid      |        |
| #1-155 | Schizachyrium scoparium        | Little Bluestem        | 2400 | \$ 3,750.00  | No Bid      | No Bid      | \$ 3,600.00 | \$ 4,200.00  | \$ 2,040.00 |        |
| #1-156 | Schoenoplectus acutus          | Hard-Stemmed Bulrush   | 16   | No Bid       | No Bid      | No Bid      | \$ 400.00   | No Bid       | \$ 344.00   |        |
| #1-157 | Scirpus atrovirens             | Dark-green Bulrush     | 1    | \$ 3.00      | No Bid      | No Bid      | \$ 3.75     | \$ 8.75      | \$ 6.00     |        |
| #1-158 | Scirpus cyperinus              | Wool Grass             | 0.5  | No Bid       | No Bid      | No Bid      | \$ 4.50     | \$ 7.50      | \$ 3.75     |        |
| #1-159 | Scutellaria lateriflora        | Mad-Dog Skullcap       | 4    | No Bid       | No Bid      | No Bid      | No Bid      | No Bid       | No Bid      |        |
| #1-160 | Silene regia                   | Royal Catchfly         | 4    | No Bid       | No Bid      | No Bid      | \$ 336.00   | No Bid       | No Bid      |        |
| #1-161 | Silphium integrifolium         | Rosin Weed             | 320  | No Bid       | No Bid      | \$ 2,592.00 | No Bid      | \$ 3,299.20  | \$ 8,960.00 |        |
| #1-162 | Silphium laciniatum            | Compass Plant          | 480  | \$ 3,600.00  | \$ 6,000.00 | \$ 4,800.00 | No Bid      | \$ 13,440.00 | No Bid      |        |
| #1-163 | Silphium terebinthinaceum      | Prairie Dock           | 400  | \$ 3,000.00  | \$ 8,752.00 | \$ 7,120.00 | No Bid      | No Bid       | \$ 2,700.00 |        |
| #1-164 | Sisyrinchium albidum           | Common Blue-Eyed Grass | 8    | No Bid       | No Bid      | No Bid      | No Bid      | No Bid       | No Bid      |        |
| #1-165 | Sium suave                     | Tall Water Parsnip     | 4    | No Bid       | No Bid      | No Bid      | No Bid      | No Bid       | \$ 184.00   |        |
| #1-166 | Solidago gigantea              | Late Goldenrod         | 2    | No Bid       | No Bid      | No Bid      | No Bid      | \$ 93.60     | No Bid      |        |
| #1-167 | Solidago juncea                | Early Goldenrod        | 8    | No Bid       | No Bid      | No Bid      | \$ 240.00   | \$ 168.00    | \$ 216.00   |        |
| #1-168 | Solidago nemoralis             | Old Field Goldenrod    | 16   | No Bid       | No Bid      | \$ 180.00   | \$ 288.00   | No Bid       | No Bid      |        |
| #1-169 | Solidago speciosa              | Showy Goldenrod        | 16   | \$ 960.00    | No Bid      | \$ 214.40   | No Bid      | \$ 704.00    | \$ 384.00   |        |
| #1-170 | Sorghastrum nutans             | Indian Grass           | 480  | \$ 480.00    | No Bid      | \$ 264.00   | \$ 240.00   | \$ 264.00    | \$ 192.00   |        |
| #1-171 | Spartina pectinata             | Cord Grass             | 64   | No Bid       | No Bid      | No Bid      | \$ 768.00   | \$ 1,024.00  | No Bid      |        |
| #1-172 | Sporobolus cryptandrus         | Sand Dropseed          | 80   | No Bid       | No Bid      | No Bid      | No Bid      | No Bid       | No Bid      |        |
| #1-173 | Sporobolus heterolepis         | Prairie Dropseed       | 800  | \$ 12,000.00 | No Bid      | \$ 7,280.00 | No Bid      | No Bid       | \$ 7,400.00 |        |
| #1-174 | Symphotrichum ericoides        | Heath Aster            | 8    | No Bid       | No Bid      | No Bid      | No Bid      | \$ 488.00    | No Bid      |        |

|        |                               |                                |      |             |             |             |             |             |             |
|--------|-------------------------------|--------------------------------|------|-------------|-------------|-------------|-------------|-------------|-------------|
| #1-175 | Symphyotrichum laeve          | Smooth Blue Aster              | 48   | No Bid      | No Bid      | \$ 451.20   | \$ 900.00   | \$ 528.00   | \$ 444.00   |
| #1-176 | Symphyotrichum lanceolatum    | Panicked Aster                 | 2    | \$ 100.00   | No Bid      | No Bid      | \$ 88.00    | \$ 56.00    | \$ 80.00    |
| #1-177 | Symphyotrichum novae-angliae  | New England Aster              | 44   | \$ 440.00   | No Bid      | \$ 752.40   | \$ 1,650.00 | \$ 880.00   | \$ 495.00   |
| #1-178 | Symphyotrichum oblongifolium  | Aromatic Aster                 | 32   | No Bid      | No Bid      | No Bid      | No Bid      | No Bid      | No Bid      |
| #1-179 | Symphyotrichum oolentangiense | Sky Blue Aster                 | 32   | No Bid      | No Bid      | No Bid      | \$ 1,200.00 | \$ 400.00   | No Bid      |
| #1-180 | Symphyotrichum puniceum       | Bristly Aster                  | 4    | No Bid      | No Bid      | No Bid      | \$ 220.00   | No Bid      | \$ 192.00   |
| #1-181 | Symphyotrichum sericeum       | Silky Aster                    | 32   | No Bid      | No Bid      | \$ 960.00   | No Bid      | No Bid      | \$ 1,920.00 |
| #1-182 | Symphyotrichum lateriflorum   | Calico Aster                   | 11   | No Bid      | No Bid      | No Bid      | \$ 770.00   | No Bid      | \$ 495.00   |
| #1-183 | Taenidia integerrima          | Yellow Pimpernel               | 30   | No Bid      | No Bid      | No Bid      | No Bid      | No Bid      | No Bid      |
| #1-184 | Thalictrum dasycarpum         | Purple Meadow Rue              | 32   | No Bid      | \$ 800.00   | No Bid      | \$ 704.00   | No Bid      | No Bid      |
| #1-185 | Tradescantia ohimensis        | Ohio Spiderwort                | 352  | No Bid      | No Bid      | \$ 5,508.80 | \$ 7,920.00 | No Bid      | \$ 4,752.00 |
| #1-186 | Verbena hastata               | Blue Vervain                   | 6    | No Bid      | No Bid      | \$ 36.00    | \$ 33.78    | \$ 72.00    | \$ 27.00    |
| #1-187 | Verbena simplex               | Narrow-leaved Vervain          | 8    | No Bid      | No Bid      | No Bid      | No Bid      | No Bid      | No Bid      |
| #1-188 | Verbena stricta               | Hoary Vervain                  | 16   | \$ 96.00    | \$ 90.08    | \$ 70.40    | \$ 120.00   | No Bid      | \$ 88.00    |
| #1-189 | Vernonia fasciculata          | Common Ironweed                | 1    | No Bid      | No Bid      | No Bid      | \$ 18.00    | \$ 9.30     | No Bid      |
| #1-190 | Vernonia missurica            | Missouri Ironweed              | 48   | No Bid      | No Bid      | No Bid      | No Bid      | No Bid      | No Bid      |
| #1-191 | Veronicastrum virginicum      | Culver's Root                  | 4    | \$ 128.00   | No Bid      | \$ 150.00   | \$ 300.00   | \$ 248.00   | \$ 192.00   |
| #1-192 | Viola pedatifida              | Prairie Violet                 | 4    | No Bid      | No Bid      | No Bid      | No Bid      | No Bid      | No Bid      |
| #1-193 | Viola sororia                 | Common Blue Violet             | 4    | No Bid      | No Bid      | No Bid      | No Bid      | No Bid      | No Bid      |
| #1-194 | Zizia aptera                  | Heart-leaved Golden Alexanders | 80   | No Bid      | No Bid      | \$ 1,072.00 | No Bid      | No Bid      | No Bid      |
| #1-195 | Zizia aurea                   | Golden Alexanders              | 192  | \$ 624.00   | \$ 480.00   | \$ 422.40   | No Bid      | \$ 960.00   | \$ 1,440.00 |
| 2      | Johnson's Mound Seed          |                                |      |             |             |             |             |             |             |
| #2-1   | Allium cernuum                | Nodding Onion                  | 192  | No Bid      | No Bid      | No Bid      | No Bid      | \$ 3,456.00 | \$ 1,920.00 |
| #2-2   | Amorpha canescens             | Lead Plant                     | 128  | No Bid      | No Bid      | \$ 358.40   | No Bid      | \$ 768.00   | No Bid      |
| #2-3   | Andropogon gerardii           | Big Bluestem                   | 320  | \$ 240.00   | No Bid      | \$ 102.40   | No Bid      | \$ 160.00   | \$ 112.00   |
| #2-4   | Anemone canadensis            | Canada Anemone                 | 48   | \$ 1,200.00 | No Bid      | No Bid      | No Bid      | No Bid      | \$ 1,296.00 |
| #2-5   | Anemone virginiana            | Tall Thimbleweed               | 32   | No Bid      | No Bid      | No Bid      | No Bid      | No Bid      | \$ 1,696.00 |
| #2-6   | Antennaria plantaginifolia    | Pussytoes                      | 5    | No Bid      | No Bid      | No Bid      | No Bid      | No Bid      | No Bid      |
| #2-7   | Arnoglossum atriplicifolium   | Pale Indian Plantain           | 96   | No Bid      | No Bid      | No Bid      | No Bid      | No Bid      | No Bid      |
| #2-8   | Arnoglossum plantagineum      | Prairie Indian Plantain        | 16   | No Bid      | No Bid      | No Bid      | No Bid      | No Bid      | No Bid      |
| #2-9   | Asclepias incarnata           | Rose Milkweed                  | 96   | No Bid      | \$ 600.00   | \$ 393.60   | No Bid      | \$ 1,800.00 | \$ 883.20   |
| #2-10  | Asclepias sullivantii         | Prairie Milkweed               | 16   | No Bid      | No Bid      | No Bid      | No Bid      | \$ 1,200.00 | No Bid      |
| #2-11  | Asclepias syriaca             | Common Milkweed                | 192  | \$ 960.00   | \$ 1,080.96 | \$ 960.00   | No Bid      | \$ 3,072.00 | \$ 912.00   |
| #2-12  | Asclepias tuberosa            | Butterfly Weed                 | 48   | No Bid      | No Bid      | \$ 1,036.80 | No Bid      | No Bid      | \$ 1,392.00 |
| #2-13  | Asclepias verticillata        | Whorled Milkweed               | 48   | No Bid      | No Bid      | No Bid      | \$ 2,880.00 | No Bid      | \$ 1,704.00 |
| #2-14  | Astragalus canadensis         | Canada Milk Vetch              | 64   | No Bid      | \$ 120.32   | \$ 32.00    | No Bid      | No Bid      | \$ 192.00   |
| #2-15  | Baptisia bracteata            | Cream Wild Indigo              | 16   | No Bid      | \$ 800.00   | No Bid      | \$ 1,280.00 | No Bid      | No Bid      |
| #2-16  | Baptisia lactea               | White Wild Indigo              | 384  | No Bid      | No Bid      | \$ 3,264.00 | No Bid      | No Bid      | \$ 3,552.00 |
| #2-17  | Blephilia ciliata             | Ohio Horse Mint                | 2    | No Bid      | No Bid      | No Bid      | No Bid      | No Bid      | \$ 240.00   |
| #2-18  | Bouteloua curtipendula        | Side Oats                      | 1920 | No Bid      | No Bid      | \$ 2,016.00 | \$ 5,760.00 | No Bid      | \$ 2,112.00 |
| #2-19  | Brickellia eupatorioides      | False Boneset                  | 32   | No Bid      | No Bid      | No Bid      | \$ 1,120.00 | No Bid      | \$ 896.00   |
| #2-20  | Bromus kalmii                 | Prairie Brome                  | 800  | No Bid      | No Bid      | \$ 3,000.00 | No Bid      | No Bid      | No Bid      |
| #2-21  | Camassia scilloides           | Wild Hyacinth                  | 32   | No Bid      | No Bid      | No Bid      | \$ 1,760.00 | No Bid      | No Bid      |
| #2-22  | Carex bebbii                  | Bebb's Oval Sedge              | 32   | No Bid      | No Bid      | No Bid      | \$ 480.00   | No Bid      | \$ 768.00   |
| #2-23  | Carex bicknellii              | Copper-shouldered Oval Sedge   | 96   | \$ 2,400.00 | No Bid      | \$ 1,502.40 | \$ 1,584.00 | No Bid      | \$ 1,248.00 |

|       |                           |                        |       |    |          |        |          |          |          |          |          |
|-------|---------------------------|------------------------|-------|----|----------|--------|----------|----------|----------|----------|----------|
| #2-24 | Carex blanda              | Common Wood Sedge      | 96    |    | No Bid   | No Bid | No Bid   | No Bid   | No Bid   | No Bid   | No Bid   |
| #2-25 | Carex brevior             | Plains Oval Sedge      | 96    | \$ | 1,200.00 | No Bid | No Bid   | \$       | 1,056.00 | No Bid   | No Bid   |
| #2-26 | Carex cristatella         | Crested Sedge          | 16    |    | No Bid   | No Bid | No Bid   | No Bid   | No Bid   | No Bid   | No Bid   |
| #2-27 | Carex molesta             | Field Oval Sedge       | 96    |    | No Bid   | No Bid | \$       | 393.60   | \$       | 1,344.00 | No Bid   |
| #2-28 | Chamaecrista fasciculata  | Partridge Pea          | 640   |    | No Bid   | \$     | 403.20   | \$       | 384.00   | No Bid   | No Bid   |
| #2-29 | Cirsium discolor          | Pasture Thistle        | 32    |    | No Bid   | No Bid | No Bid   | No Bid   | No Bid   | No Bid   | \$       |
| #2-30 | Coreopsis palmata         | Prairie Coreopsis      | 48    |    | No Bid   | No Bid | \$       | 3,000.00 | No Bid   | \$       | 2,112.00 |
| #2-31 | Dalea candida             | White Prairie Clover   | 96    |    | No Bid   | \$     | 180.48   | \$       | 57.60    | No Bid   | No Bid   |
| #2-32 | Dalea purpurea            | Purple Prairie Clover  | 144   |    | No Bid   | \$     | 224.64   | \$       | 72.00    | No Bid   | \$       |
| #2-33 | Desmodium illinoensis     | Illinois Tick Trefoil  | 48    |    | No Bid   | No Bid | \$       | 153.60   | No Bid   | No Bid   | No Bid   |
| #2-34 | Dodecatheon meadia        | Midland Shooting Star  | 16    |    | No Bid   | No Bid | No Bid   | No Bid   | No Bid   | No Bid   | \$       |
| #2-35 | Echinacea pallida         | Pale Purple Coneflower | 480   |    | No Bid   | No Bid | \$       | 600.00   | \$       | 2,880.00 | No Bid   |
| #2-36 | Elymus canadensis         | Canada Wild Rye        | 1120  |    | No Bid   | No Bid | No Bid   | No Bid   | \$       | 1,540.00 | \$       |
| #2-37 | Eupatorium perfoliatum    | Boneset                | 2     |    | No Bid   | No Bid | \$       | 50.00    | \$       | 64.00    | \$       |
| #2-38 | Euphorbia corollata       | Flowering Spurge       | 48    |    | No Bid   | No Bid | No Bid   | No Bid   | No Bid   | No Bid   | No Bid   |
| #2-39 | Euthamia graminifolia     | Grass-leaved Goldenrod | 6     |    | No Bid   | No Bid | \$       | 375.00   | No Bid   | \$       | 360.00   |
| #2-40 | Galium boreale            | Northern Bedstraw      | 4     |    | No Bid   | No Bid | No Bid   | No Bid   | No Bid   | No Bid   | \$       |
| #2-41 | Gentianella quinquefolia  | Stiff Gentian          | 4     |    | No Bid   | No Bid | No Bid   | No Bid   | No Bid   | No Bid   | No Bid   |
| #2-42 | Helenium autumnale        | Sneezeweed             | 4     |    | No Bid   | No Bid | \$       | 28.00    | \$       | 704.00   | No Bid   |
| #2-43 | Helianthus grosseserratus | Saw-tooth Sunflower    | 32    |    | No Bid   | No Bid | \$       | 320.00   | \$       | 7,680.00 | \$       |
| #2-44 | Helianthus mollis         | Downy Sunflower        | 64    |    | No Bid   | No Bid | \$       | 1,600.00 | No Bid   | No Bid   | No Bid   |
| #2-45 | Helianthus pauciflorus    | Prairie Sunflower      | 32    |    | No Bid   | No Bid | No Bid   | No Bid   | No Bid   | No Bid   | No Bid   |
| #2-46 | Heliopsis helianthoides   | Early Sunflower        | 384   | \$ | 1,344.00 | \$     | 480.00   | \$       | 326.40   | \$       | 768.00   |
| #2-47 | Heuchera richardsonii     | Prairie Alumroot       | 2     | \$ | 180.00   | No Bid | \$       | 130.00   | \$       | 210.00   | No Bid   |
| #2-48 | Juncus dudleyi            | Dudley's Rush          | 1     | \$ | 60.00    | No Bid | No Bid   | \$       | 35.00    | No Bid   | \$       |
| #2-49 | Koeleria macrantha        | June Grass             | 48    | \$ | 720.00   | No Bid | \$       | 600.00   | \$       | 816.00   | No Bid   |
| #2-50 | Liatris aspera            | Button Blazing Star    | 144   | \$ | 5,760.00 | No Bid | No Bid   | No Bid   | No Bid   | No Bid   | No Bid   |
| #2-51 | Lobelia spicata           | Pale Spiked Lobelia    | 2     | \$ | 100.00   | No Bid | No Bid   | No Bid   | No Bid   | No Bid   | No Bid   |
| #2-52 | Lolium multiflorum        | Annual Rye Grass       | 12800 |    | No Bid   | No Bid | \$       | 640.00   | No Bid   | No Bid   | \$       |
| #2-53 | Monarda fistulosa         | Wild Bergamot          | 48    |    | No Bid   | \$     | 240.00   | \$       | 196.80   | \$       | 600.00   |
| #2-54 | Oenothera pilosella       | Prairie Sundrops       | 3     |    | No Bid   | No Bid | No Bid   | No Bid   | \$       | 282.00   | No Bid   |
| #2-55 | Panicum virgatum          | Switch Grass           | 240   |    | No Bid   | \$     | 151.20   | \$       | 156.00   | No Bid   | \$       |
| #2-56 | Parthenium integrifolium  | Wild Quinine           | 192   |    | No Bid   | \$     | 2,160.00 | No Bid   | No Bid   | \$       | 3,072.00 |
| #2-57 | Pedicularis canadensis    | Wood Betony            | 64    |    | No Bid   | No Bid | No Bid   | No Bid   | No Bid   | No Bid   | \$       |
| #2-58 | Penstemon digitalis       | Foxglove Beardtongue   | 24    | \$ | 360.00   | No Bid | \$       | 98.40    | \$       | 216.00   | \$       |
| #2-59 | Phlox pilosa              | Prairie Phlox          | 3     |    | No Bid   | No Bid | No Bid   | No Bid   | No Bid   | No Bid   | No Bid   |
| #2-60 | Pycnanthemum tenuifolium  | Slender Mountain Mint  | 4     |    | No Bid   | No Bid | No Bid   | No Bid   | No Bid   | No Bid   | No Bid   |
| #2-61 | Pycnanthemum virginianum  | Mountain Mint          | 5     | \$ | 150.00   | \$     | 93.75    | \$       | 109.50   | \$       | 150.00   |
| #2-62 | Ratibida pinnata          | Yellow Coneflower      | 96    |    | No Bid   | No Bid | \$       | 134.40   | \$       | 360.00   | \$       |
| #2-63 | Rosa carolina             | Pasture Rose           | 8     |    | No Bid   | No Bid | No Bid   | No Bid   | No Bid   | No Bid   | No Bid   |
| #2-64 | Rudbeckia hirta           | Black-eyed Susan       | 160   |    | No Bid   | \$     | 150.40   | \$       | 96.00    | \$       | 320.00   |
| #2-65 | Rudbeckia subtomentosa    | Sweet Black-eyed Susan | 32    | \$ | 160.00   | \$     | 249.92   | \$       | 160.00   | \$       | 512.00   |
| #2-66 | Rudbeckia triloba         | Brown-eyed Susan       | 32    |    | No Bid   | \$     | 80.00    | \$       | 48.00    | \$       | 352.00   |
| #2-67 | Schizachyrium scoparium   | Little Bluestem        | 1600  |    | No Bid   | No Bid | No Bid   | \$       | 2,400.00 | \$       | 2,800.00 |
| #2-68 | Silene regia              | Royal Catchfly         | 1     |    | No Bid   | No Bid | No Bid   | \$       | 84.00    | No Bid   | No Bid   |

|       |                              |                                |     |             |           |             |             |             |              |
|-------|------------------------------|--------------------------------|-----|-------------|-----------|-------------|-------------|-------------|--------------|
| #2-69 | Silphium integrifolium       | Rosin Weed                     | 384 | No Bid      | No Bid    | \$ 3,110.40 | No Bid      | No Bid      | \$ 10,752.00 |
| #2-70 | Silphium laciniatum          | Compass Plant                  | 96  | \$ 720.00   | No Bid    | \$ 960.00   | No Bid      | \$ 2,688.00 | No Bid       |
| #2-71 | Silphium terebinthinaceum    | Prairie Dock                   | 192 | \$ 1,440.00 | No Bid    | No Bid      | No Bid      | \$ 4,032.00 | \$ 1,296.00  |
| #2-72 | Sisyrinchium albidum         | Common Blue-Eyed Grass         | 16  | No Bid      | No Bid    | No Bid      | No Bid      | No Bid      | No Bid       |
| #2-73 | Solidago gigantea            | Late Goldenrod                 | 8   | No Bid      | No Bid    | No Bid      | No Bid      | \$ 374.40   | No Bid       |
| #2-74 | Solidago juncea              | Early Goldenrod                | 4   | No Bid      | No Bid    | No Bid      | 120.00      | \$ 84.00    | \$ 108.00    |
| #2-75 | Solidago speciosa            | Showy Goldenrod                | 16  | \$ 960.00   | No Bid    | \$ 214.40   | No Bid      | \$ 704.00   | \$ 384.00    |
| #2-76 | Sorghastrum nutans           | Indian Grass                   | 240 | \$ 240.00   | No Bid    | \$ 132.00   | No Bid      | \$ 132.00   | \$ 96.00     |
| #2-77 | Spartina pectinata           | Cord Grass                     | 48  | No Bid      | No Bid    | No Bid      | No Bid      | \$ 768.00   | No Bid       |
| #2-78 | Sporobolus heterolepis       | Prairie Dropseed               | 800 | No Bid      | No Bid    | \$ 7,280.00 | No Bid      | No Bid      | \$ 7,400.00  |
| #2-79 | Symphotrichum ericoides      | Heath Aster                    | 4   | No Bid      | No Bid    | No Bid      | No Bid      | \$ 244.00   | No Bid       |
| #2-80 | Symphotrichum laeve          | Smooth Blue Aster              | 32  | No Bid      | No Bid    | \$ 300.80   | \$ 600.00   | \$ 352.00   | \$ 296.00    |
| #2-81 | Symphotrichum lanceolatum    | Panicked Aster                 | 4   | \$ 200.00   | No Bid    | No Bid      | \$ 176.00   | \$ 112.00   | \$ 160.00    |
| #2-82 | Symphotrichum novae-angliae  | New England Aster              | 48  | \$ 480.00   | No Bid    | \$ 820.80   | \$ 1,800.00 | \$ 960.00   | \$ 540.00    |
| #2-83 | Symphotrichum oblongifolium  | Aromatic Aster                 | 16  | No Bid      | No Bid    | No Bid      | No Bid      | No Bid      | No Bid       |
| #2-84 | Symphotrichum oolentangiense | Sky Blue Aster                 | 8   | No Bid      | No Bid    | No Bid      | \$ 300.00   | \$ 100.00   | No Bid       |
| #2-85 | Symphotrichum puniceum       | Bristly Aster                  | 8   | No Bid      | No Bid    | No Bid      | \$ 440.00   | No Bid      | \$ 384.00    |
| #2-86 | Taenidia integerrima         | Yellow Pimpernel               | 48  | No Bid      | No Bid    | No Bid      | No Bid      | No Bid      | No Bid       |
| #2-87 | Tradescantia ohimensis       | Ohio Spiderwort                | 192 | No Bid      | No Bid    | \$ 3,004.80 | \$ 4,320.00 | No Bid      | \$ 2,592.00  |
| #2-88 | Verbena stricta              | Hoary Vervain                  | 16  | \$ 96.00    | No Bid    | \$ 65.60    | \$ 120.00   | No Bid      | \$ 88.00     |
| #2-89 | Vernonia fasciculata         | Common Ironweed                | 4   | No Bid      | No Bid    | No Bid      | \$ 72.00    | \$ 37.20    | No Bid       |
| #2-90 | Veronicastrum virginicum     | Culver's Root                  | 5   | \$ 160.00   | No Bid    | \$ 187.50   | \$ 375.00   | \$ 310.00   | \$ 240.00    |
| #2-91 | Zizia aptera                 | Heart-leaved Golden Alexanders | 16  | No Bid      | No Bid    | \$ 214.40   | No Bid      | No Bid      | No Bid       |
| #2-92 | Zizia aurea                  | Golden Alexanders              | 96  | No Bid      | \$ 240.00 | \$ 211.20   | No Bid      | \$ 480.00   | \$ 720.00    |



Group, Ltd. of Woodridge, Illinois.

Project 12 - Virgil Forest Preserve. Bid of \$9,920, submitted by Bluestem Ecological Services.

Project 13 - Raceway Woods Forest Preserve. Bid of \$40,361, submitted by Pizzo and Associates, Ltd.

Project 14 - Raceway Woods Forest Preserve. Bid of \$23,690, submitted by Pizzo and Associates, Ltd.; and

WHEREAS, the total for the preceding 14 projects is \$347,335.

NOW, THEREFORE, BE IT RESOLVED by the Commissioners of the Forest Preserve District of Kane County, Kane County, Illinois, that the qualified, lowest bids for thinning of trees and cutting of brush by Pizzo and Associates of Leland, Illinois, for a total contract cost of \$270,147 for projects 1, 2, 3, 5, 6, 8, 13, and 14; ENCAP, Inc. of DeKalb, Illinois, for a total contract cost of \$23,265 for project 4; by Bluestem Ecological Services of Marengo, Illinois, for a total contract cost of \$33,955 for projects 7, 9, 10, 11, and 12; and by V3 Construction Group, Ltd. of Woodridge, Illinois, for a total contract cost of \$19,968 for project 11; as listed above, in the total amount of \$347,335 be, and hereby are, accepted and approved.

APPROVED AND PASSED on this 9th day of September, 2025.

---

Bill Lenert  
President, Kane Forest Preserve  
Kane County, Illinois

---

Mohammad Iqbal  
Secretary, Kane Forest Preserve  
Kane County, Illinois



# AGENDA MEMORANDUM

---

**DATE:** August 28, 2025

**TO:** Forest Preserve District Planning and Utilization Committee

**FROM:** Patrick Chess, Director of Natural Resources  
Ben Haberthur, Executive Director

**SUBJECT:** Presentation and Approval of Bids for Fourteen Tree and Brush Clearing Projects

---

**PURPOSE:**

The purpose of this memorandum is to provide the Committee with information to consider the approval of bids for invasive brush and tree clearing at portions of the following: Aurora West, Burnidge Dick Young, Schweitzer Woods, Bliss Woods, Bowes Creek Greenway, Elburn, Pingree Grove, Stearns Road, Virgil, and Raceway Woods Forest Preserves.

**BACKGROUND:**

The objectives of these projects are to remove non-native brush and small mesic trees in degraded oak woodlands and large-scale tallgrass prairie restorations.

Woody invasive species, such as common buckthorn (*Rhamnus cathartica*) and bush honeysuckle (*Lonicera spp.*), are some of the other primary threats to biodiversity in Kane County's forests. These species create a thick mid-story cover that prevents light from reaching native understory plants. They also grow very well in shade; oak saplings do not. This adaptation prevents the regeneration of native trees. Grassland invasive species, like callery pear (*Pyrus calleryana*), have similar impacts to prairie communities by choking out the native grasses and forbs.

Mechanical removal of these invasive species, combined with chemical follow-up, will help to restore the ecosystems to a healthier condition. This, in turn, will provide better habitat quality for the entire suite of wildlife that these preserves support.

Contractors were sought to bid on clearing projects across numerous, heavily-infested forest preserves. Projects are as follows:

- **Project 1 – Aurora West Forest Preserve in Aurora.** Tree and brush clearing will focus on approximately 62.4 acres of restored prairie.
- **Project 2 – Burnidge Forest Preserve in Elgin.** Tree and brush clearing will focus on approximately 53 acres of restored prairie.
- **Project 3 – Dick Young Forest Preserve in Batavia.** Tree and brush clearing will focus on approximately 77.6 acres of restored prairie.
- **Project 4 – Schweitzer Woods Forest Preserve in West Dundee.** Tree and brush clearing will focus on approximately 42.3 acres of savanna restoration.
- **Project 5 – Bliss Woods Forest Preserve in Sugar Grove.** Tree and brush clearing will focus on

approximately 46.7 acres of oak woodland and mesic floodplain woods.

- **Project 6 – Bliss Woods Forest Preserve in Sugar Grove.** Tree and brush clearing will focus on approximately 21.8 acres of oak woodland and mesic floodplain woods.
- **Project 7 – Bowes Creek Greenway in Elgin.** Tree and brush clearing will focus on 3.7 acres of floodplain woodland and pond berms.
- **Project 8 – Elburn Forest Preserve in Elburn.** Tree and brush clearing will focus on 39.2 acres of high-quality oak woodland.
- **Project 9 – Pingree Grove Forest Preserve in Pingree Grove.** Tree and brush clearing will focus on 13 acres of marsh edge.
- **Project 10 – Pingree Grove Forest Preserve in Pingree Grove.** Tree and brush clearing will focus on 10.2 acres of marsh edge.
- **Project 11 – Stearns Road Forest Preserve in South Elgin.** Tree and brush clearing will focus on 12.1 acres of floodplain along Brewster Creek.
- **Project 12 – Virgil Forest Preserve in Virgil.** Tree clearing will focus on a tree line following the ditch adjacent to agricultural land.
- **Project 13 – Raceway Woods Forest Preserve in Carpentersville.** Tree and brush clearing will focus on 25.5 acres of high-quality oak woodland.
- **Project 14 – Raceway Woods Forest Preserve in Carpentersville.** Tree and brush clearing will focus on 11.2 acres of high-quality oak woodland.

The District publicly advertised the bid and received 8 responses. The qualified, lowest bids for each option were as follows:

- **Project 1 – Aurora West Forest Preserve.** Bid of \$18,308, submitted by Pizzo and Associates, Ltd. of Leland, Illinois.
- **Project 2 – Burnidge Forest Preserve.** Bid of \$24,913, submitted by Pizzo and Associates, Ltd.
- **Project 3 – Dick Young Forest Preserve.** Bid of \$28,892, submitted by Pizzo and Associates, Ltd.
- **Project 4 – Schweitzer Woods Forest Preserve.** Bid of \$23,265, submitted by ENCAP, Inc. of DeKalb, Illinois.
- **Project 5 – Bliss Woods Forest Preserve.** Bid of \$55,295, submitted by Pizzo and Associates, Ltd.
- **Project 6 – Bliss Woods Forest Preserve.** Bid of \$31,310, submitted by Pizzo and Associates, Ltd.
- **Project 7 – Bowes Creek Greenway.** Bid of \$8,790, submitted by Bluestem Ecological Services of Marengo, Illinois.
- **Project 8 – Elburn Forest Preserve.** Bid of \$47,378, submitted by Pizzo and Associates, Ltd.
- **Project 9 – Pingree Grove Forest Preserve.** Bid of \$9,020, submitted by Bluestem Ecological Services.
- **Project 10 – Pingree Grove Forest Preserve.** Bid of \$6,225, submitted by Bluestem Ecological Services.
- **Project 11 – Stearns Road Forest Preserve.** Bid of \$19,968, submitted by V3 Construction Group, Ltd. of Woodridge, Illinois.
- **Project 12 – Virgil Forest Preserve.** Bid of \$9,920, submitted by Bluestem Ecological Services.

- **Project 13 – Raceway Woods Forest Preserve.** Bid of \$40,361, submitted by Pizzo and Associates, Ltd.
- **Project 14 – Raceway Woods Forest Preserve.** Bid of \$23,690, submitted by Pizzo and Associates, Ltd.

**FINANCIAL IMPACT:**

Funds totaling \$100,000 were budgeted in Fiscal Year 2025/26 for tree-thinning projects at several preserves.

Funds totaling \$100,000 are available in the Natural Resource Management Tree and Brush Thinning budget, Account #01-31-31-7063, to cover all of Project 1 (\$18,308), Project 2 (\$24,913), Project 3 (\$28,892) and Project 4 (\$23,265) at a total expense of \$95,378.

Funds totaling \$350,000 were budgeted in Fiscal Year 2025/26 for the Maple Esker Woodland project. Sufficient funds totaling \$278,186.56 are available in the Maple Esker Woodland project, Account #03-31-31-7060 Project #21011, to cover Projects 5 and 6 at a total expense of \$86,605.

Funds totaling \$35,000 were budgeted in Fiscal Year 2025/26 for Donated Lands Management (01-31-31-7066). Sufficient funds totaling \$35,000 are available to cover Project 7 at a total expense of \$8,790.

Funds totaling \$300,000 were budgeted in Fiscal Year 2025/26 for the Grand Trillium Woodland project. Sufficient funds totaling \$300,000 are available in the Grand Trillium Woodland project, Account #03-31-31-7060 Project #21012, to cover Project 8 at a total expense of \$47,378.

Funds totaling \$448,000 were budgeted in Fiscal Year 2025/26 for the Pingree Grove Wetland Bird Habitat Enhancement project. Sufficient funds totaling \$36,019.07 are available in the Pingree Grove Wetland Bird Habitat Enhancement project, Account #03-31-31-7060 Project #20604, to cover Projects 9 and 10 at a total expense of \$15,245.

Funds totaling \$200,000 were budgeted in Fiscal Year 2025/26 for the Stearns Road Natural Areas Improvement project. Sufficient funds totaling \$200,000 are available in the Stearns Road Natural Areas Improvement project, Account #03-31-31-7060 Project #21014, to cover Project 11 at a total expense of \$19,968.

Funds totaling \$35,000 were budgeted in Fiscal Year 2025/26 for the Virgil Ditch project. Sufficient funds totaling \$35,000 are available in the Virgil Ditch project, Account #03-31-31-7060 Project #21013, to cover Project 12 at a total expense of \$9,920.

Funds totaling \$100,000 were budgeted in Fiscal Year 2025/26 for the Raceway Woods Landscape Scale Restoration Grant project. Sufficient funds totaling \$100,000 are available in the Raceway Woods Landscape Scale Restoration Grant project, Account #03-31-31-7060 Project #21016, to cover Projects 13 and 14 at a total expense of \$64,051. This project is funded in part through a \$50,000 grant from the U.S. Forest Service for landscape scale restoration projects.

**RECOMMENDATION:**

Staff recommends the Committee approve the contracts for invasive tree and brush removal at portions of Aurora West, Burnidge, Dick Young, Schweitzer Woods, Bliss Woods, Bowes Creek Greenway, Elburn, Pingree Grove, Stearns Road, Virgil, and Raceway Woods Forest Preserves to the four separate qualified, lowest bidders as follows:

- Projects 1, 2, 3, 5, 6, 8, 13, and 14 – Pizzo and Associates of Leland, Illinois, for a total contract cost of \$270,147.
- Project 4 – ENCAP, Inc. of DeKalb, Illinois, for a total contract cost of \$23,265.
- Projects 7, 9, 10, and 12 – Bluestem Ecological Services of Marengo, Illinois, for a total contract cost of \$33,955.
- Project 11 – V3 Construction Group, Ltd. of Woodridge, Illinois, for a total contract cost of \$19,968.
- The total cost for all 14 projects is \$347,335.

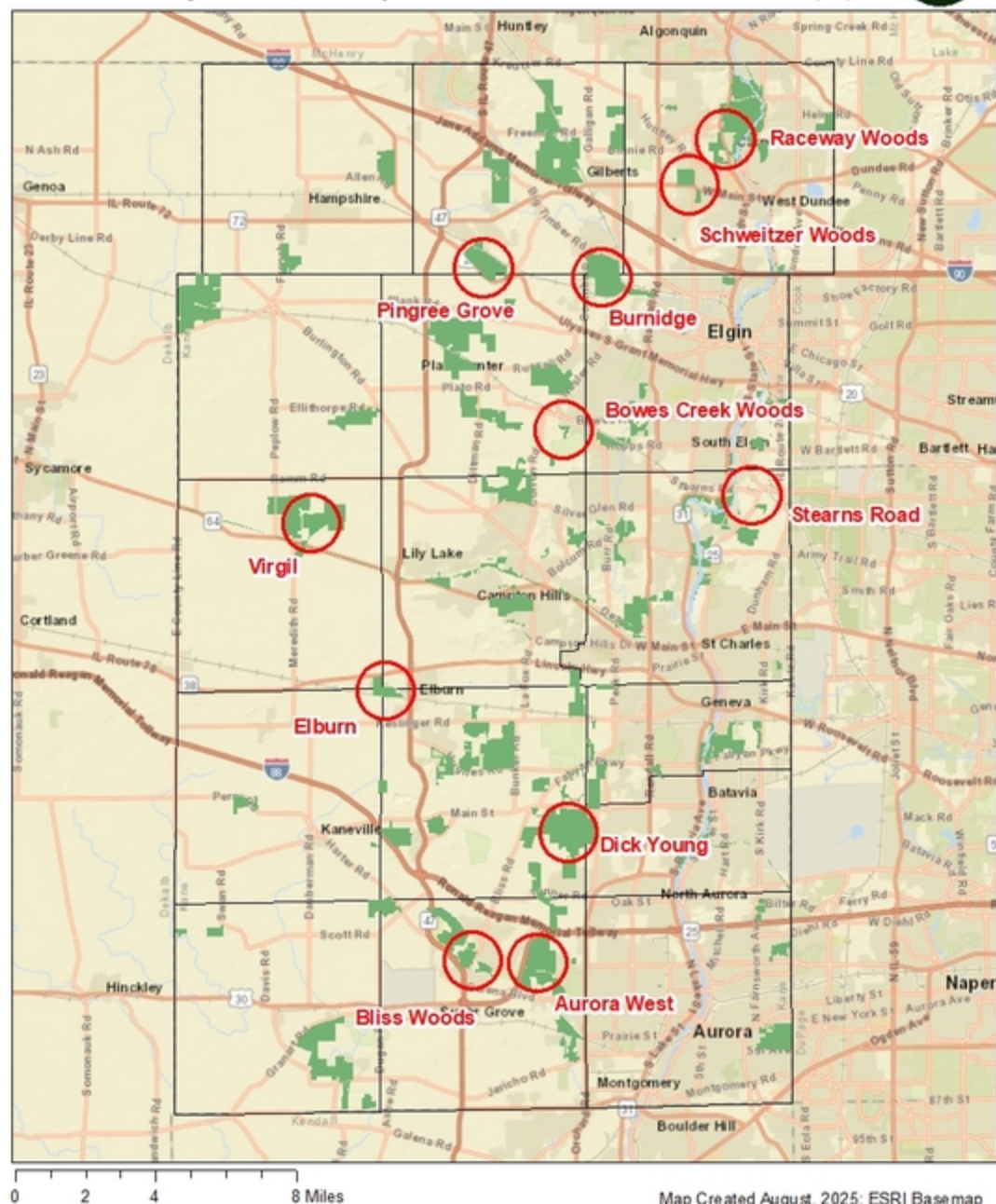
**ATTACHMENTS:**

*Bid Abstract*

*County Locator Map*

*Project Area Maps*

# Tree and Brush Clearing Kane County Locator Map



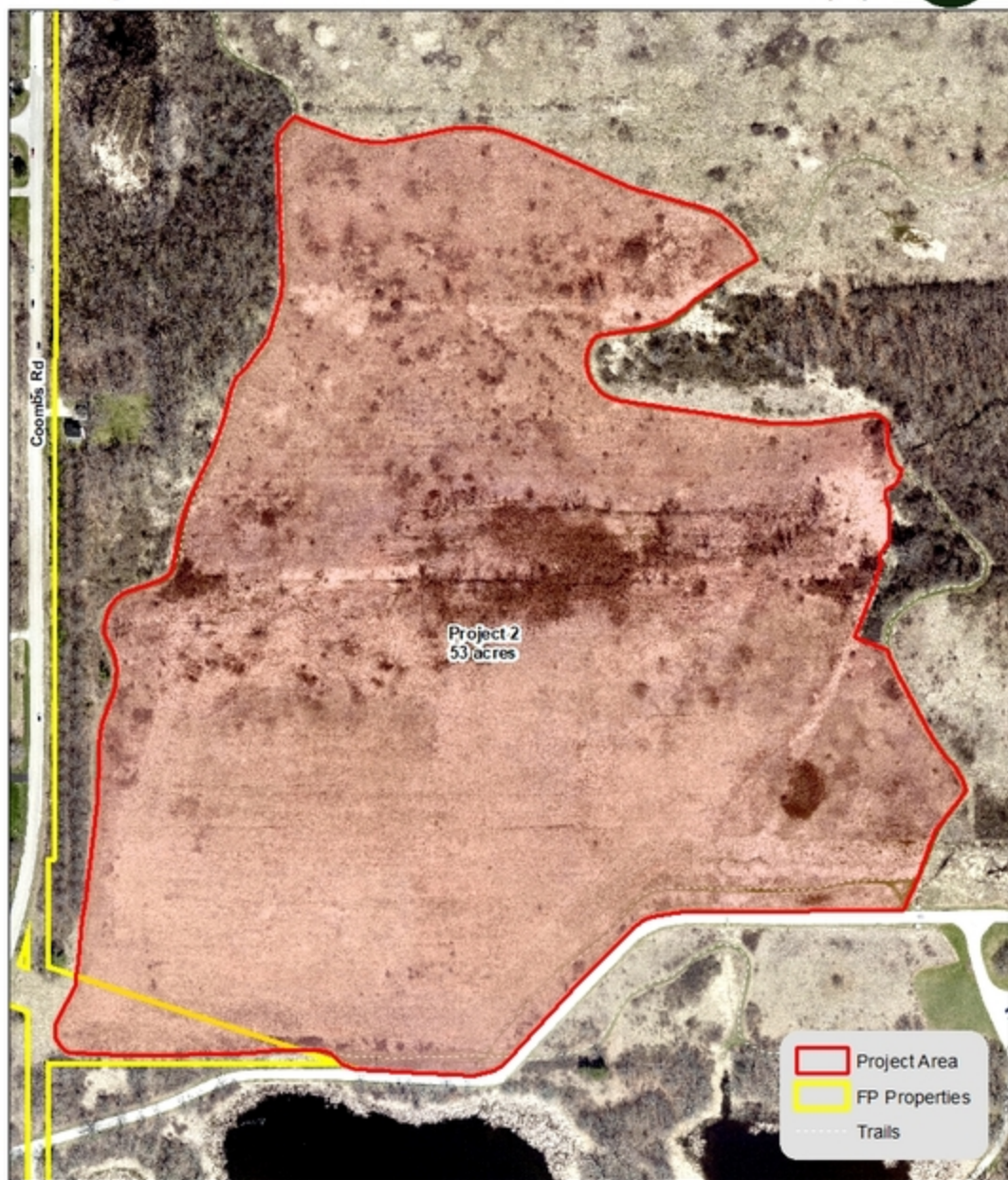
# Tree and Brush Clearing Aurora West Forest Preserve



0 200 400 800 Feet

Map Created June, 2025; 2024 Air Photo

# Tree and Brush Clearing Burnidge Forest Preserve



Map Created June, 2025; 2024 Air Photo

# Tree and Brush Clearing Dick Young Forest Preserve



0 285 570 1,140 Feet

Map Created June, 2025; 2024 Air Photo

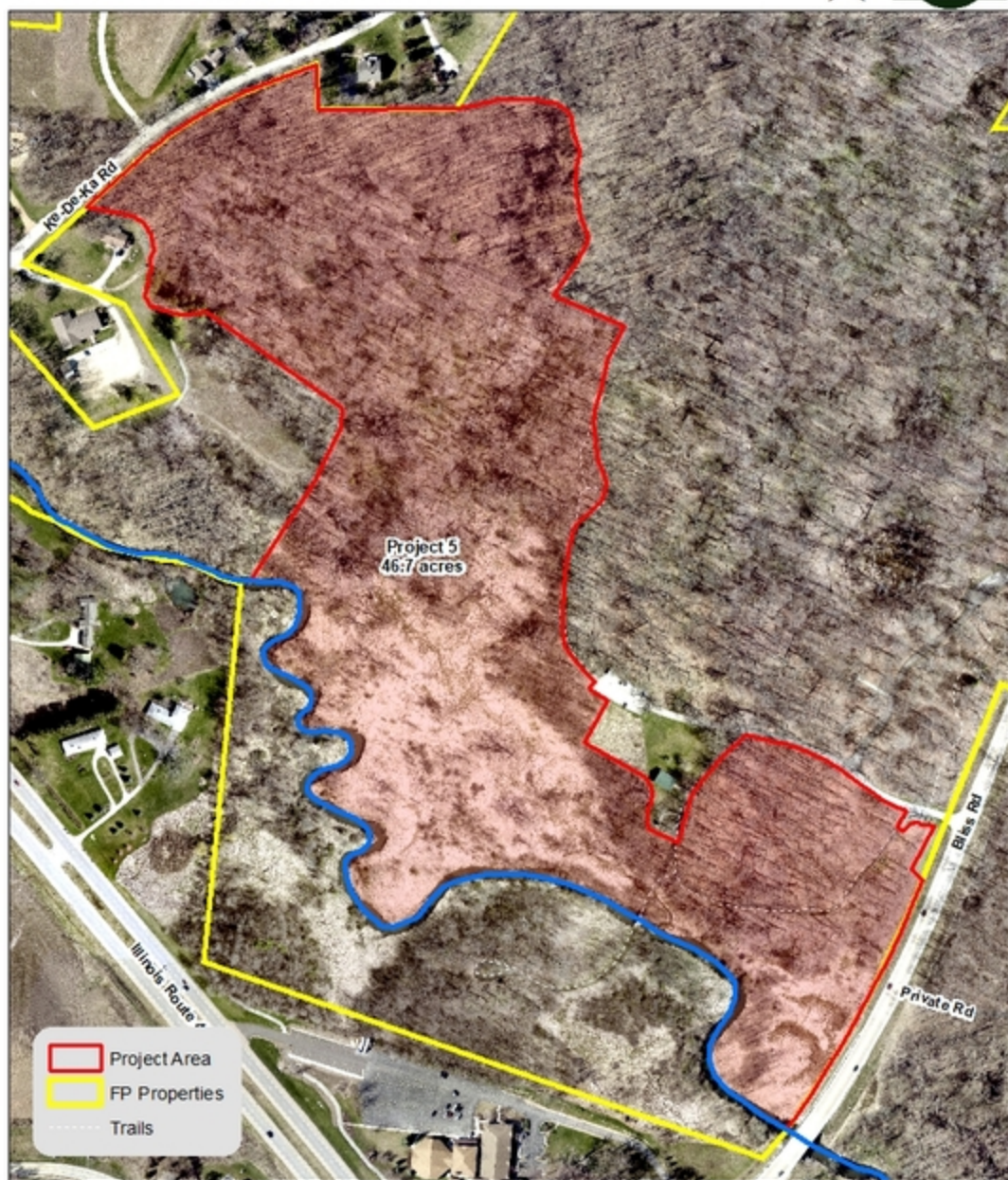
# Tree and Brush Clearing Schweitzer Woods Forest Preserve



0 205 410 820 Feet

Map Created June, 2025; 2024 Air Photo

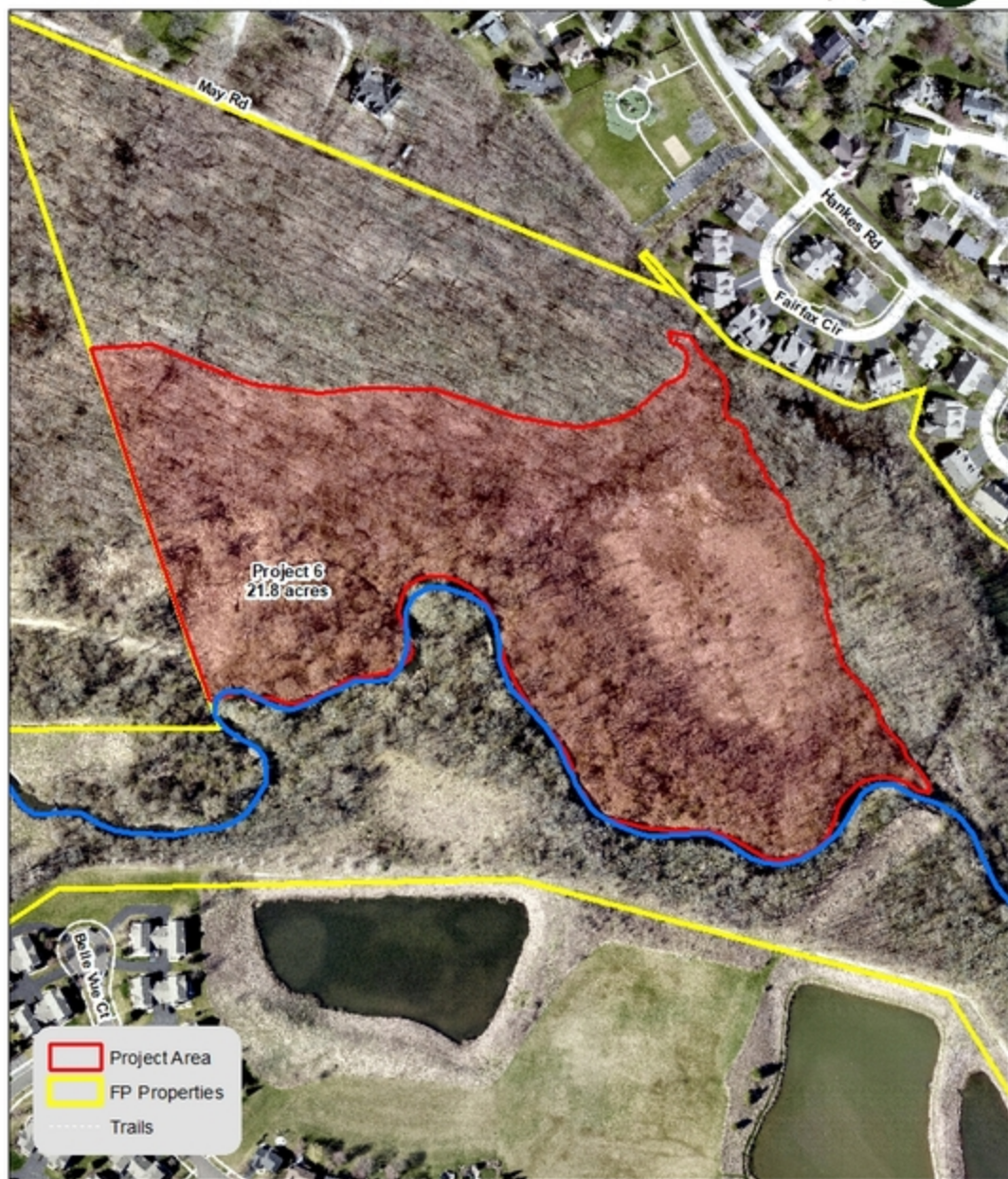
# Tree and Brush Clearing Bliss Woods Forest Preserve



0 180 360 720 Feet

Map Created June, 2025; 2024 Air Photo

# Tree and Brush Clearing Bliss Woods Forest Preserve



0 145 290 580 Feet

Map Created June, 2025; 2024 Air Photo

# Tree and Brush Clearing Bowes Creek Greenway



0 60 120 240 Feet

Map Created June, 2025; 2024 Air Photo

# Tree and Brush Clearing Elburn Forest Preserve



0 175 350 700 Feet

Map Created June, 2025; 2024 Air Photo

# Tree and Brush Clearing Pingree Grove Forest Preserve



0 110 220 440 Feet

Map Created June, 2025; 2024 Air Photo

# Tree and Brush Clearing Pingree Grove Forest Preserve



0 75 150 300 Feet

Map Created June, 2025; 2024 Air Photo

# Tree and Brush Clearing Stearns Rd Parcels



0 135 270 540 Feet

Map Created June, 2025; 2024 Air Photo

# Tree and Brush Clearing Virgil Forest Preserve



0 330 660 1,320 Feet

Map Created June, 2025; 2024 Air Photo

# Tree and Brush Clearing Raceway Woods Forest Preserve



0 112.5 225 450 Feet

Map Created July, 2025; 2024 Air Photo



## ABSTRACT OF BIDS TREE AND BRUSH THINNING

SB-FP-04-2526

| Bidder's Name  | Bluestem Ecological Services | Davey Resource Group, Inc. | ENCAP, Inc.  | HGS, LLC dba RES Environmental Operating Company, LLC | Integrated Lakes Management, Inc. | Pizzo and Associated, Ltd. | V3 Construction Group, Ltd. | Woods to Wetlands |
|--|------------------------------|----------------------------|--------------|---|-----------------------------------|----------------------------|-----------------------------|-------------------|
| City, State  | Marengo, IL                  | Elmhurst, IL               | DeKalb, IL   | Chicago, IL   | Waukegan, IL                      | Leland, IL                 | Woodridge, IL               | Streamwood, IL    |
| Project 1: Aurora West Forest Preserve- 62.4 acres       | No Bid                       | \$85,614.00                | \$34,320.00  | \$35,700.00   | \$35,748.00                       | \$18,308.00                | \$43,710.00                 | No Bid            |
| Project 2: Burnidge Forest Preserve- 53 acres            | \$50,110.00                  | \$130,053.80               | \$31,005.00  | \$34,100.00   | \$34,350.00                       | \$24,913.00                | \$56,800.00                 | No Bid            |
| Project 3: Dick Young Forest Preserve - 77.6 acres       | No Bid                       | \$108,915.00               | \$48,500.00  | \$39,500.00   | \$28,900.00                       | \$28,892.00                | \$53,260.00                 | No Bid            |
| Project 4: Schweitzer Woods Forest Preserve - 42.3 acres | \$47,610.00                  | \$102,054.00               | \$23,265.00  | \$28,500.00   | \$70,232.00                       | \$44,866.00                | \$32,760.00                 | No Bid            |
| Project 5: Bliss Woods Forest Preserve- 46.7 acres       | No Bid                       | No Bid                     | \$112,080.00 | \$82,700.00   | \$126,954.00                      | \$55,295.00                | \$86,928.00                 | No Bid            |
| Project 6: Bliss Woods Forest Preserve - 21.8 acres      | No Bid                       | No Bid                     | \$52,320.00  | \$44,700.00   | No Bid                            | \$31,310.00                | \$136,260.00                | No Bid            |
| Project 7: Bowes Creek Greenway - 3.7 acres              | \$8,790.00                   | \$24,661.00                | \$16,650.00  | \$30,900.00   | No Bid                            | \$61,856.00                | \$18,075.00                 | No Bid            |
| Project 8: Elburn Forest Preserve- 39.2 acres            | \$76,015.00                  | No Bid                     | \$101,920.00 | \$73,900.00   | \$94,515.00                       | \$47,378.00                | \$84,720.00                 | No Bid            |
| Project 9: Pingree Grove Forest Preserve- 13 acres       | \$9,020.00                   | \$28,405.00                | \$18,850.00  | \$19,400.00   | \$14,870.00                       | \$175,970.00               | \$20,176.00                 | \$28,199.00       |
| Project 10: Pingree Grove Forest Preserve- 10.2 acres    | \$6,225.00                   | \$27,535.00                | \$12,240.00  | \$15,000.00   | \$14,960.00                       | \$117,803.00               | \$12,160.00                 | \$20,398.00       |
| Project 11: Stearns Road Forest Preserve- 12.1 acres     | \$20,900.00                  | No Bid                     | \$35,090.00  | \$22,400.00   | No Bid                            | \$29,999.00                | \$19,968.00                 | No Bid            |
| Project 12: Virgil Forest Preserve- 5.4 acres            | \$9,920.00                   | No Bid                     | \$56,700.00  | No Bid  | No Bid                            | \$18,112.00                | \$58,520.00                 | No Bid            |
| Project 13: Raceway Woods Forest Preserve- 25.5 acres    | \$73,420.00                  | \$73,654.00                | \$96,900.00  | \$95,700.00   | No Bid                            | \$40,361.00                | \$95,220.00                 | No Bid            |
| Project 14: Raceway Woods- 11.2 acres                    | \$42,055.00                  | \$39,588.00                | \$42,560.00  | \$73,900.00   | No Bid                            | \$23,690.00                | \$94,350.00                 | No Bid            |

I have certified that I have opened, read and recorded all bids received in response to the invitation

David Petschke, Director of Finance

STATE OF ILLINOIS )  
COUNTY OF KANE ) SS.

**PRESENTATION/DISCUSSION NO. TMP-25-1033**

**MUIRHEAD SPRINGS WILDLIFE OBSERVATION DECK PRESENTATION**

STATE OF ILLINOIS     )  
COUNTY OF KANE     )                     SS.

**FP RESOLUTION NO. TMP-25-887**

**RESOLUTION AUTHORIZING THE DISTRICT TO APPLY FOR IDNR OSLAD  
GRANT FUNDS FOR A WILDLIFE OBSERVATION PLATFORM AND  
SUPPORTING IMPROVEMENTS AT MUIRHEAD SPRINGS FOREST  
PRESERVE**

WHEREAS, the Forest Preserve District of Kane County, Kane County, Illinois, desires to develop a wildlife observation platform and supporting improvements at Muirhead Springs Forest Preserve in Hampshire; and

WHEREAS, the District desires to seek a grant to assist with funding of the improvements which include a wildlife observation platform and trail improvements; and

WHEREAS, the District desires to seek the aid of the Illinois Department of Natural Resources (IDNR) through funding from the Open Space Land Acquisition & Development (OSLAD) Grant program; and

WHEREAS, OSLAD funding will provide up to 50% (\$600,000.00 cap) reimbursement for those funds spent on the project; and

WHEREAS, the Forest Preserve District of Kane County, hereby certifies and acknowledges that it has the sufficient funds necessary (includes cash and value of donated land) to complete the pending OSLAD project within the timeframes specified herein for project execution, and that failure to adhere to the specified project timeframe or failure to proceed with the project because of insufficient funds or change in local recreation priorities is sufficient cause for project grant termination which will also result in the ineligibility of the local project sponsor for subsequent Illinois IDNR outdoor recreation grant assistance consideration in the next two consecutive grant cycles following project termination; and

WHEREAS, It is understood that the project must be completed within the timeframe established. The OSLAD timeframe is two years as is specified in the project agreement. The Billing Certification Statement must be submitted within 45 days of the grant expiration date and the last reimbursement request must be submitted within one year of the grant expiration date. Failure to do so will result in the Project Sponsor forfeiting all project reimbursements and relieves IDNR from further payment obligations on the grant; and

WHEREAS, the District further acknowledges and certifies that it will comply with all terms, conditions and regulations of 1) the Open Space Lands Acquisition and Development (OSLAD) program (17 IL Adm. Code 3025); 2) the Illinois Grant Funds Recovery Act (30 ILCS 705); 3) the federal Uniform Relocation Assistance & Real Property Acquisition Policies Act of 1970 (P.L.

91-646) and/or the Illinois Displaced Persons Relocation Act (310 ILCS 40 et. seq.), as applicable; 4) the Illinois Human Rights Act (775 ILCS 5/1-101 et. seq.); 5) Title VI of the Civil Rights Act of 1964, (P.L. 83-352); 6) the Age Discrimination Act of 1975 (P.L. 94-135); 7) the Civil Rights Restoration Act of 1988, (P.L. 100-259); and 8) the Americans with Disabilities Act of 1990 (PL 101-336); and will maintain the project area in an attractive and safe condition, keep the facilities open to the general public during reasonable hours consistent with the type of facility, cease any farming operations, and obtain from the IDNR written approval for any change or conversion of approved outdoor recreation use of the project site prior to initiating such change or conversion; and for property acquired with OSLAD assistance, agree to place a covenant restriction on the project property deed at the time of recording that stipulates the property must be used, in perpetuity, for public outdoor recreation purposes in accordance with the OSLAD programs and cannot be sold or exchanged, in whole or part, to another party without approval from the IDNR, and that development at the site will commence within three years.

WHEREAS, the District certifies to the best of its knowledge that the information provided within the attached application is true and correct.

NOW, THEREFORE, BE IT RESOLVED, by the Board of Commissioners of the Forest Preserve District of Kane County, Kane County, Illinois, that the President be and hereby is authorized to seek grants from the Illinois Department of Natural Resources for the assistance in the development of improvements at the Muirhead Springs Forest Preserve.

APPROVED AND PASSED this 9th day of September, 2025.

---

Bill Lenert  
President, Kane Forest Preserve  
Kane County, Illinois

---

Mohammad Iqbal  
Secretary, Kane Forest Preserve  
Kane County, Illinois



# AGENDA MEMORANDUM

---

**DATE:** August 28, 2025

**TO:** Forest Preserve District Planning & Utilization Committee

**FROM:** Jennifer Rooks-Lopez, Director of Planning & Land Protection

**SUBJECT:** Presentation and Approval of a request to apply for IDNR OSLAD Grant Funds For A Wildlife Observation Platform and Supporting Improvements at Muirhead Springs Forest Preserve

---

**PURPOSE:**

The purpose of this memorandum is to provide the Committee with information to consider applying for an Illinois Department of Natural Resources (IDNR) Open Space Land Acquisitions & Development (OSLAD) Grant for improvements at Muirhead Springs Forest Preserve in Hampshire, IL.

**BACKGROUND:**

Muirhead Springs Forest Preserve contains the first wetland mitigation bank created by the District. The volume and diversity of birds that have returned to this wetland is unrivaled by any previous projects completed by the District. Multiple state and federal threatened and endangered species have been seen utilizing the site, and the word of this success is widespread amongst the “birding” community. As a result, birders have inundated the site hoping for glimpses of these rarities. This increase in visitors to the preserve has created issues with the establishment of the wetland plants required for the mitigation bank.

The proposed wildlife-observation platform was included as one of six promised capital projects for the 2024 Land Acquisition & Preserve Improvement Referendum. This project is comprised of the construction of a raised observation deck overlooking a reconstructed wetland popular with marsh birds and waterfowl. It will allow visitors of varying physical abilities access for bird watching with as minimal damage to the plant community as possible and no impact to the mitigation bank. Staff is requesting permission to apply for the IDNR OSLAD Grant to assist with funding the proposed improvements which, if awarded, would reimburse up to 50% (\$600,000.00 cap) for development and engineering.

**FINANCIAL IMPACT:**

There are no expenses required to submit the grant application.

**RECOMMENDATION:**

Staff recommends the Committee approve the request to apply for an IDNR OSLAD grant for the proposed improvements at Muirhead Springs Forest Preserve.

**ATTACHMENTS:**

*Muirhead Springs Location Map*

*Referendum Project Presentation*

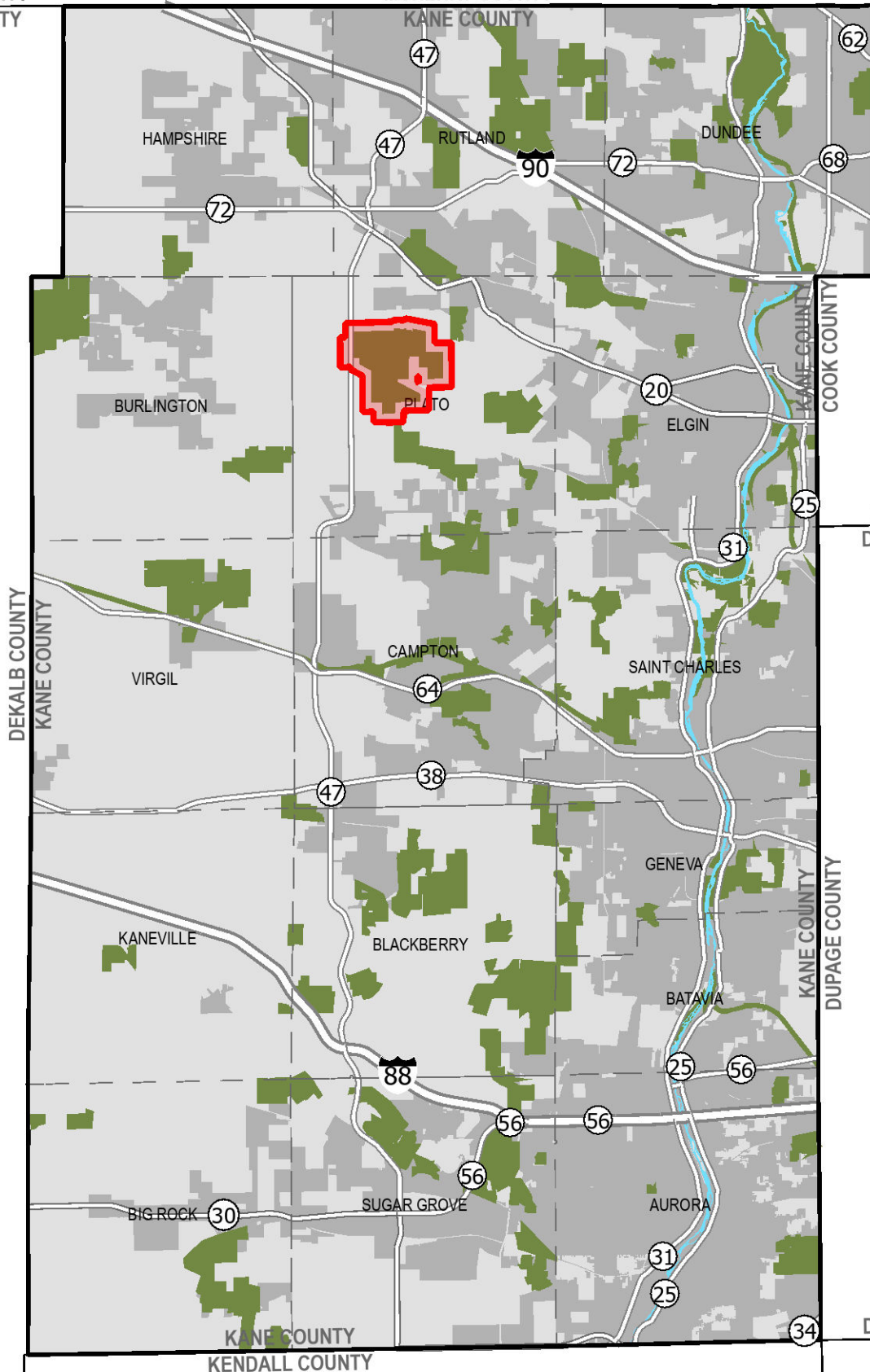
# Muirhead Springs F.P.

County Location Map

Hampshire, IL

MCHENRY COUNTY  
DEKALB COUNTY

MCHENRY COUNTY



COOK COUNTY  
DUPAGE COUNTY



- Townships
- Fox River
- Forest Preserves
- Municipalities



DUPAGE COUNTY  
WILL COUNTY

### Muirhead Springs Forest Preserve Multi-Level Wildlife Observation Platform

