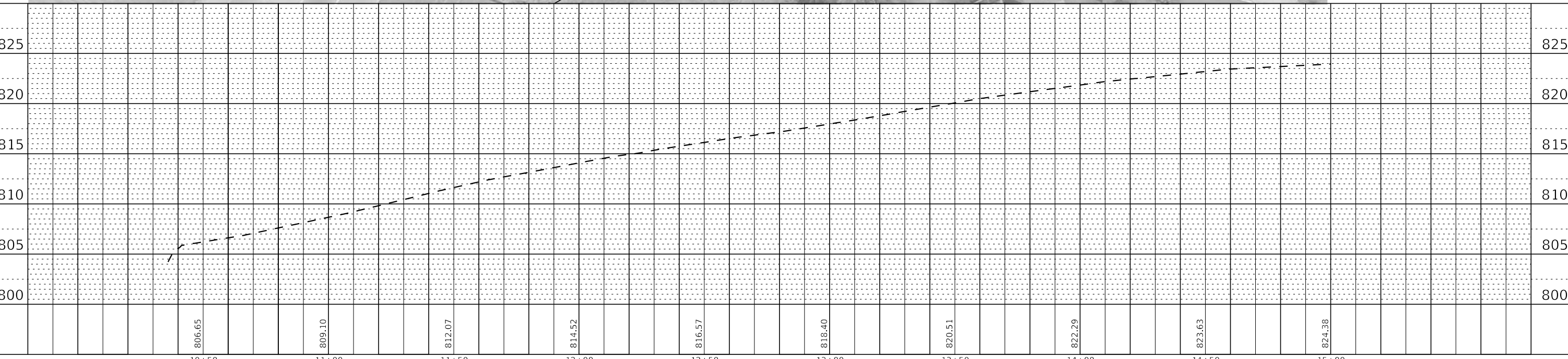


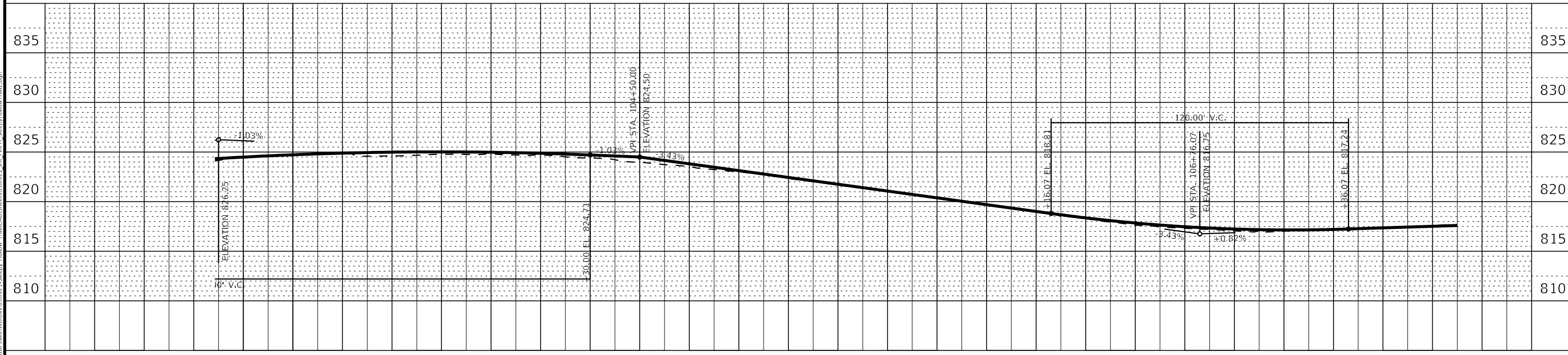
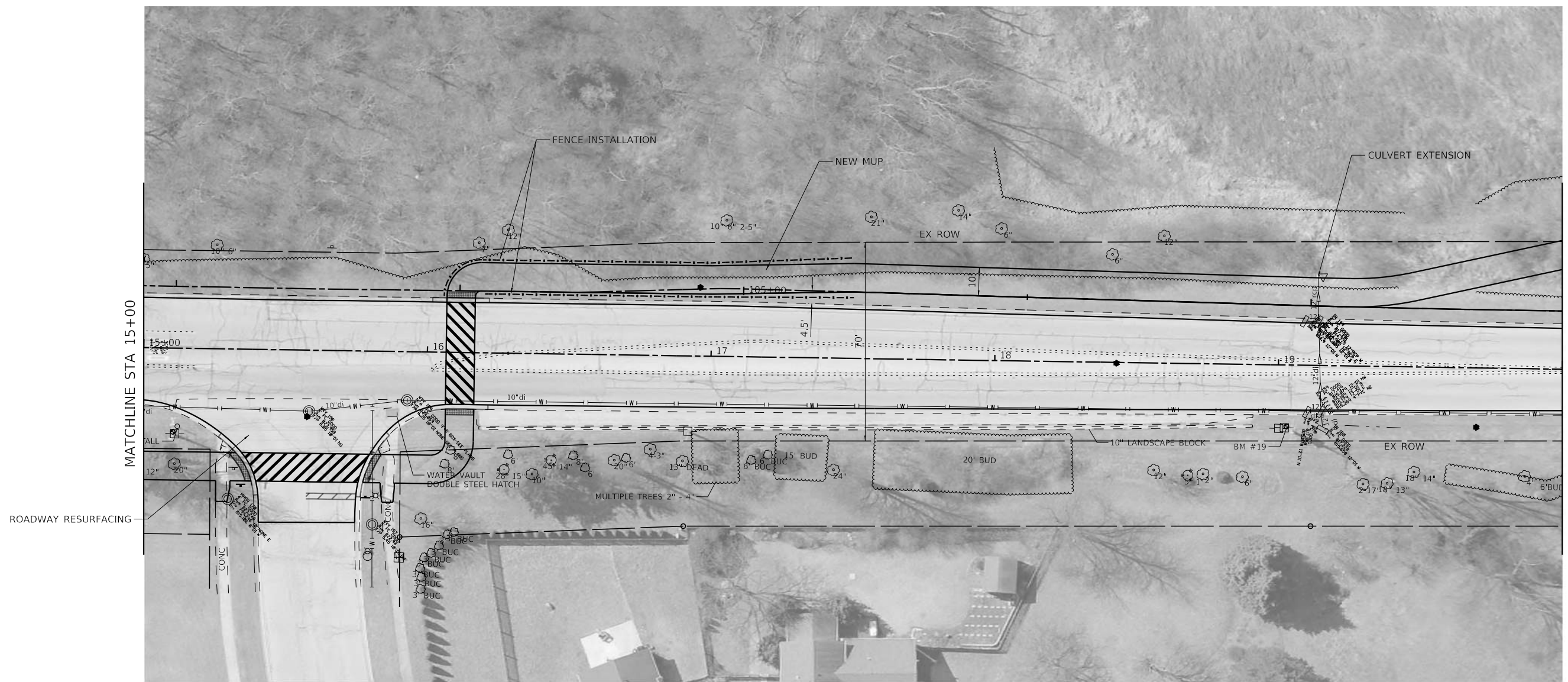
MATCHLINE STA 15+00



COPYRIGHT © BY BAXTER & WOODMAN, INC.  
 STATE OF ILLINOIS - PROFESSIONAL DESIGN FIRM  
 LICENSE NO. - 184-001121 - EXPIRES 4/30/2021  
 714HJ  
 MODEL - Default  
 FILE NAME: I:\Crystal Lake\WDM\200921-Sleepy Hollow Trail\CAD\Sheets\200921\_sht\_PlnPrf\_SleepyHollowTrail1.dgn

	USER NAME = 714HJ	DESIGNED -	REVISED -	<b>VILLAGE OF WEST DUNDEE</b> <b>SLEEPY HOLLOW ROAD</b>	<b>PLAN AND PROFILE</b>	F.A. RTE.	SECTION	COUNTY	TOTAL SHEETS	SHEET NO.
	PLOT SCALE = 40,000' / 1"	CHECKED -	REVISED -			KANE	11	2		
PLOT DATE = 8/20/2021	DATE = 05-12-21	FILE = 200921_sht_PlnPrf_SleepyHollowTrail1.dgn		SCALE:	SHEET	OF	SHEETS	STA.	TO STA.	ILLINOIS FED. AID PROJECT

COPYRIGHT © BY BAXTER & WOODMAN, INC.  
 STATE OF ILLINOIS - PROFESSIONAL DESIGN FIRM  
 LICENSE NO. - 184-001121 - EXPIRES 4/30/  
 7/14/17  
 MODEL - Default  
 FILE NAME: I:\Crystal Lake\WDM\200921-Sleepy Hollow Trail\CAD\Sheets\200921\_sht\_PlnPrf\_SleepyHollowTrail2.dgn



USER NAME = 714jif	DESIGNED -	REVISED -
PLOT SCALE = 40,000' / 1 in.	DRAWN -	REVISED -
PLOT DATE = 8/20/2021	CHECKED -	REVISED -
	DATE - 05-12-21	FILE - 200921_sht_PlnPrf_SleepyHollowTrail2.dgn

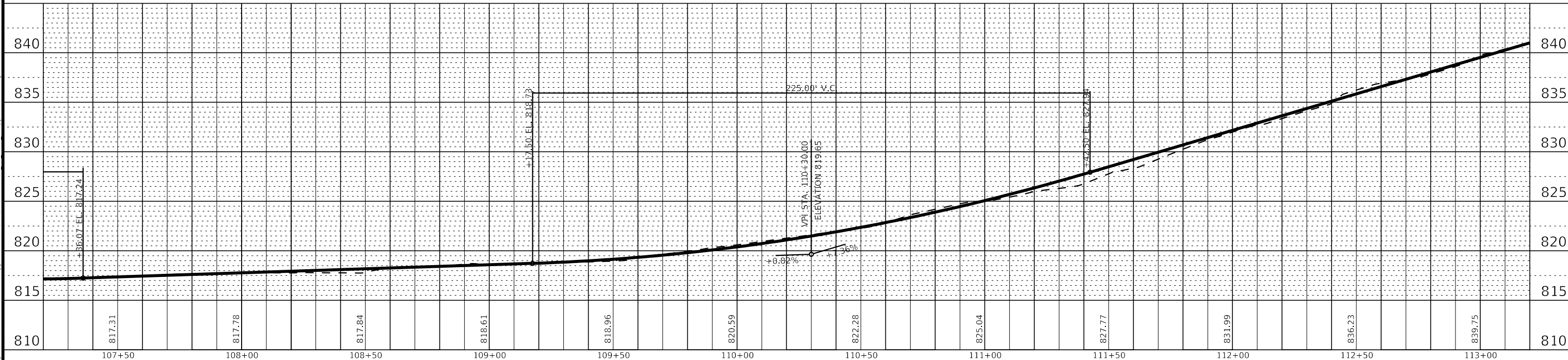
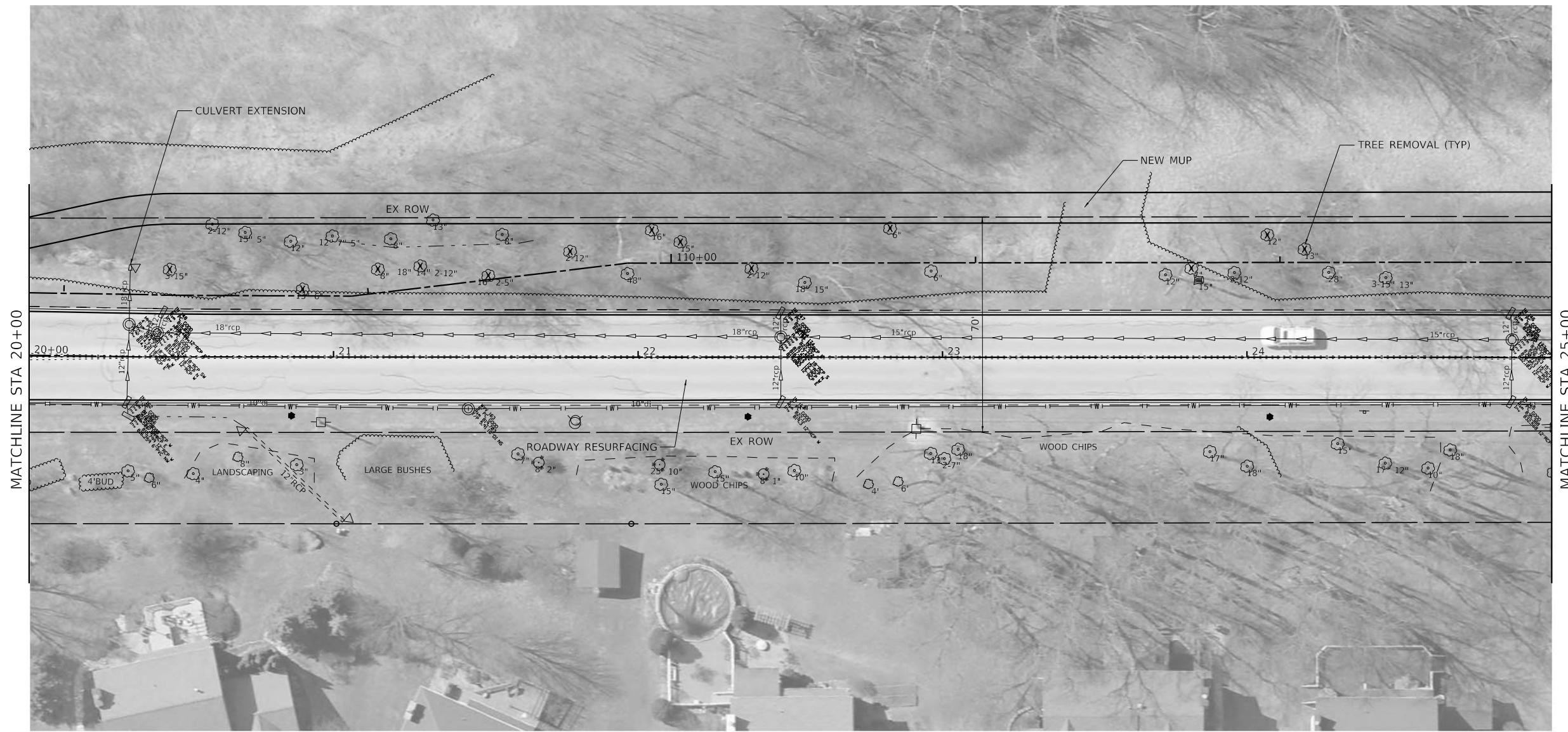
**VILLAGE OF WEST DUNDEE  
 SLEEPY HOLLOW ROAD**

**PLAN AND PROFILE**

SCALE: SHEET OF SHEETS STA. TO STA.

F.A. RTE.	SECTION	COUNTY	TOTAL SHEETS	SHEET NO.
		KANE	11	3
CONTRACT NO.				
ILLINOIS FED. AID PROJECT				

COPYRIGHT © BY BAXTER & WOODMAN, INC.  
 STATE OF ILLINOIS - PROFESSIONAL DESIGN FIRM  
 LICENSE NO. - 184-001121 - EXPIRES 4/30/  
 7/14/1f  
 MODEL - Default  
 FILE NAME: I:\Crystal Lake\WDM\200921-Sleepy Hollow Trail\CAD\Sheets\200921\_sht\_PlnPrf\_SleepyHollowTrail3.dgn

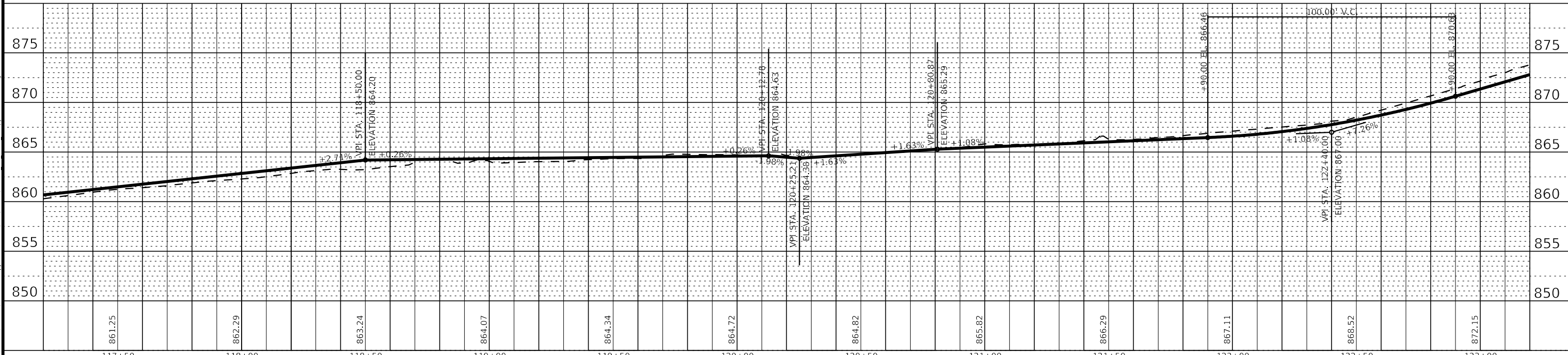
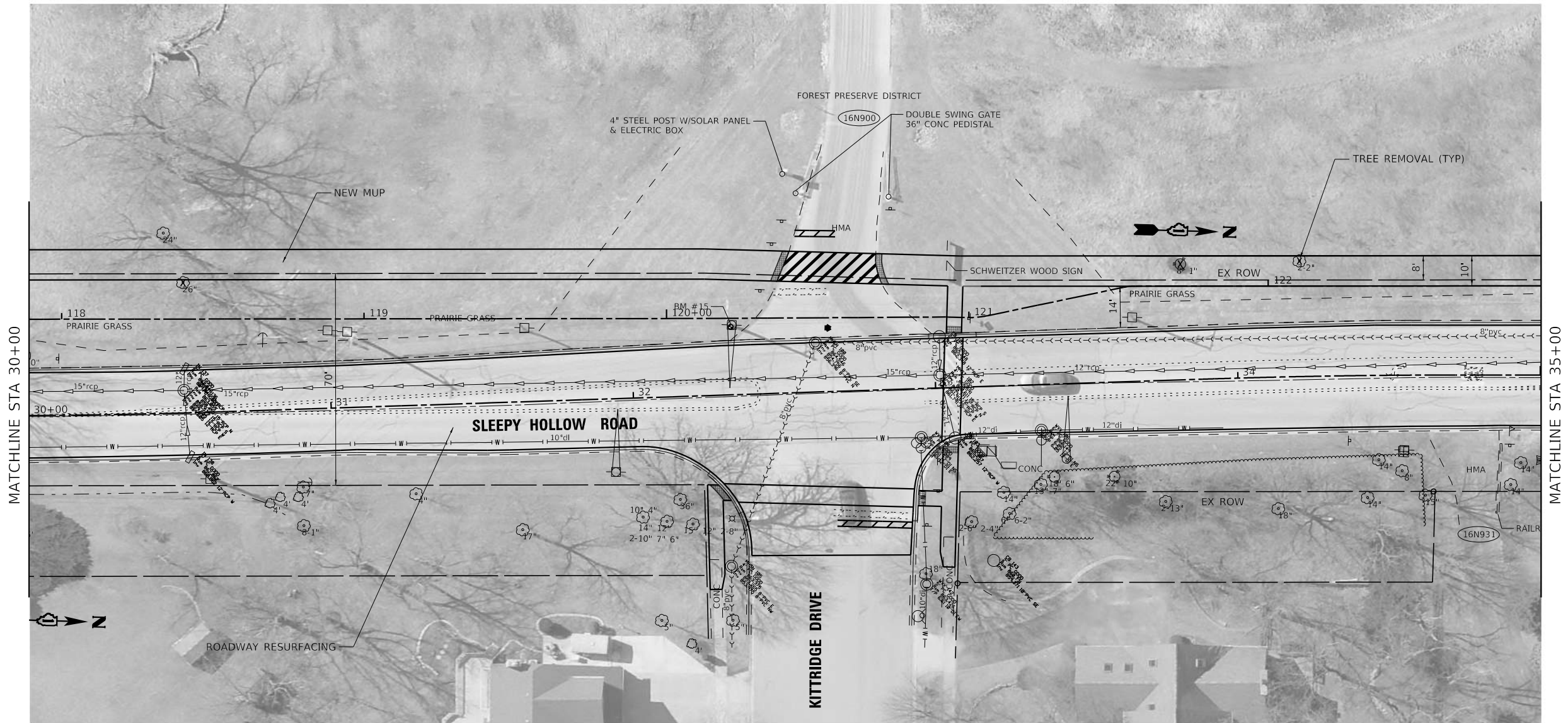


<b>BAXTER &amp; WOODMAN</b> Consulting Engineers	USER NAME = 714jlf DESIGNED - DRAWN - CHECKED - DATE = 05-12-21	REVISED - REVISED - REVISED - FILE - 200921_sht_PlnPrf_SleepyHollowTrail3.dgn	<b>VILLAGE OF WEST DUNDEE          SLEEPY HOLLOW ROAD</b>		<b>PLAN AND PROFILE</b>		SCALE:	SHEET OF SHEETS STA. TO STA.	F.A. RTE.	SECTION	COUNTY	TOTAL SHEETS	SHEET NO.
	KANE	ILLINOIS	11	4	CONTRACT NO.		ILLINOIS FED. AID PROJECT						



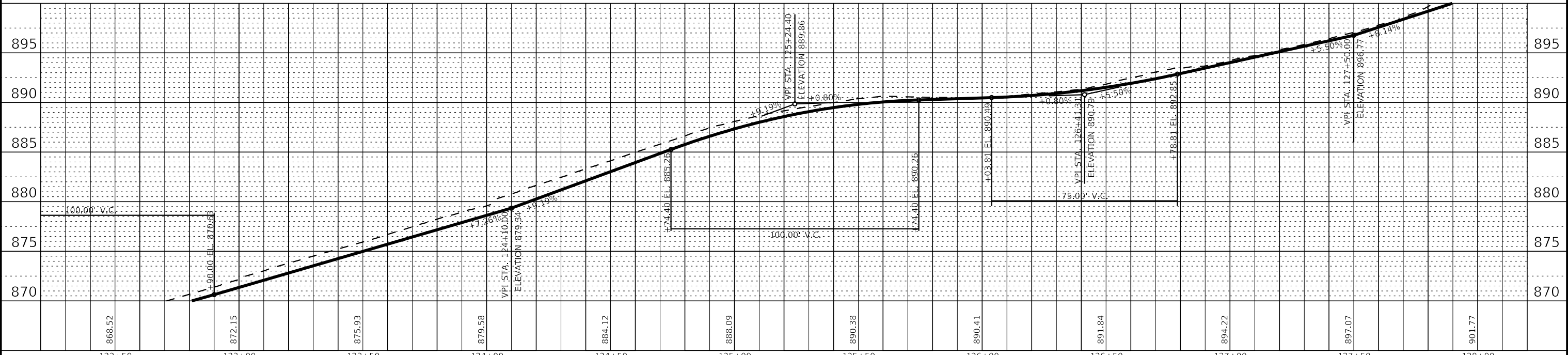
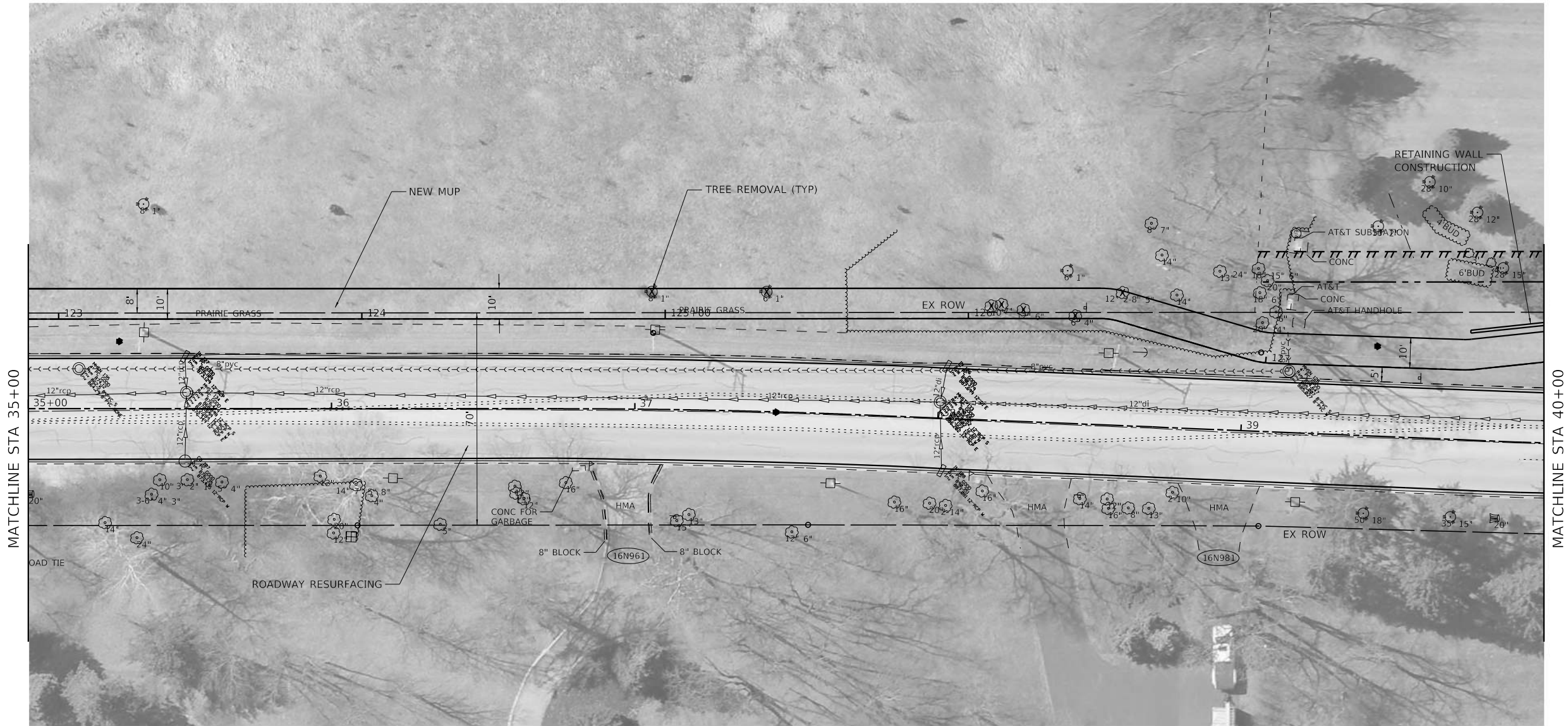


COPYRIGHT © BY BAXTER & WOODMAN, INC.  
 STATE OF ILLINOIS - PROFESSIONAL DESIGN FIRM  
 LICENSE NO. - 184-001121 - EXPIRES 4/30/  
 7/14/17  
 MODEL - Default  
 FILE NAME: I:\Crystal Lake\WDM\200921\Sleepy Hollow Trail\CAD\Sheets\200921\_sht\_PlnPrf\_SleepyHollowTrails.dgn



<b>BAXTER &amp; WOODMAN</b> Consulting Engineers		USER NAME = 714jlf	DESIGNED -	REVISED -	<b>VILLAGE OF WEST DUNDEE SLEEPY HOLLOW ROAD</b>	<b>PLAN AND PROFILE</b>				F.A. RTE.	SECTION	COUNTY	TOTAL SHEETS	SHEET NO.
		PLOT SCALE = 40.0000' / in.	DRAWN -	REVISED -		SCALE:	SHEET	OF	SHEETS	STA.	TO STA.	KANE	11	6
		PLOT DATE = 8/20/2021	CHECKED -	REVISED -		CONTRACT NO.								
		DATE = 05-12-21	FILE = 200921_sht_PlnPrf_SleepyHollowTrail5.dgn	ILLINOIS FED. AID PROJECT										

COPYRIGHT © BY BAXTER & WOODMAN, INC.  
 STATE OF ILLINOIS - PROFESSIONAL DESIGN FIRM  
 LICENSE NO. - 184-001121 - EXPIRES 4/30/  
 7/14/11  
 MODEL: Default  
 FILE NAME: I:\Crystal Lake\WDM\200921-Sleepy Hollow Trail\CAD\Sheets\200921\_sht\_PlnPrf\_SleepyHollowTrail.dgn

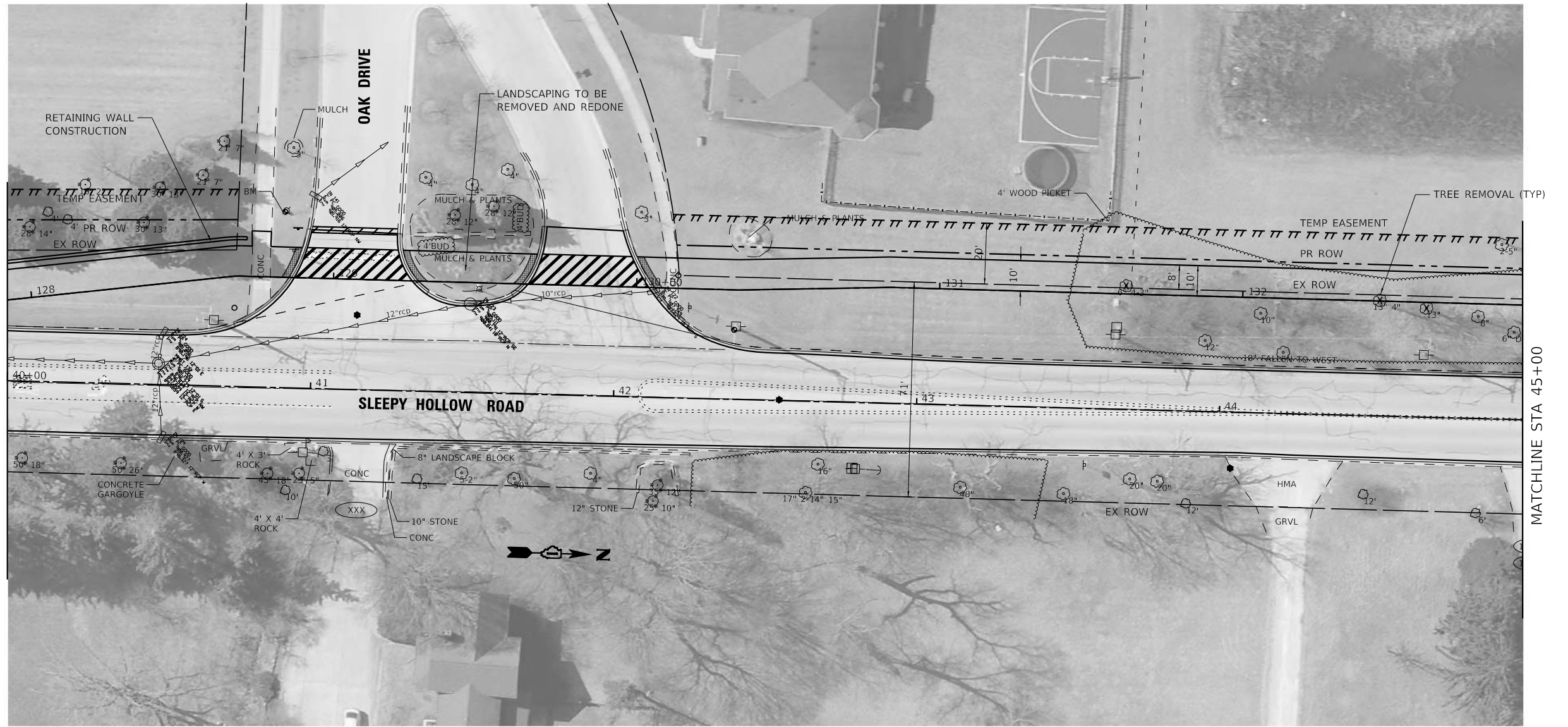


868.52	872.15	875.93	879.58	884.12	888.09	890.38	890.41	891.84	894.22	897.07	901.77
122+50	123+00	123+50	124+00	124+50	125+00	125+50	126+00	126+50	127+00	127+50	128+00

<b>BAXTER &amp; WOODMAN</b> Consulting Engineers		USER NAME = 714jlf DESIGNED - DRAWN - PLOT SCALE = 40,0000' / in. CHECKED - PLOT DATE = 8/20/2021	REVISED - REVISED - REVISED - DATE - 05-12-21	FILE - 200921_sht_PlnPrf_SleepyHollowTrail.dgn	<b>VILLAGE OF WEST DUNDEE</b> <b>SLEEPY HOLLOW ROAD</b>	<b>PLAN AND PROFILE</b>	SCALE: SHEET OF SHEETS STA. TO STA.	F.A. RTE. SECTION COUNTY KANE TOTAL SHEETS 11 SHEET NO. 7 CONTRACT NO. ILLINOIS FED. AID PROJECT
---	--	--	--	--	--	-------------------------	-------------------------------------	--

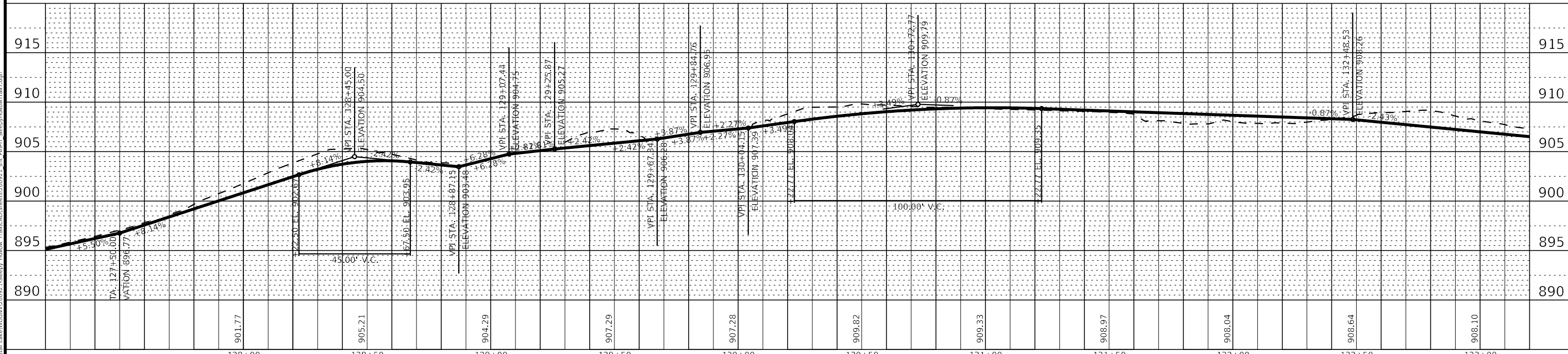


COPYRIGHT . BY BAXTER & WOODMAN, INC.  
 STATE OF ILLINOIS - PROFESSIONAL DESIGN FIRM  
 LICENSE NO. - 184-001121 - EXPIRES 4/30/  
 8/20/2021  
 MODEL: Default  
 FILE NAME: R:\Crystal Lake\WDM\200921\Sleepy Hollow Trail\CAD\Sheets\200921\_sht\_PlnPrf\_SleepyHollowTrail7.dgn



MATCHLINE STA 40+00

MATCHLINE STA 45+00



**BAXTER & WOODMAN**  
 Consulting Engineers

USER NAME = 714jlf	DESIGNED -	REVISED -
PLOT SCALE = 40.0000' / in.	DRAWN -	REVISED -
PLOT DATE = 8/20/2021	CHECKED -	REVISED -
	DATE - 05-12-21	FILE - 200921_sht_PlnPrf_SleepyHollowTrail7.dgn

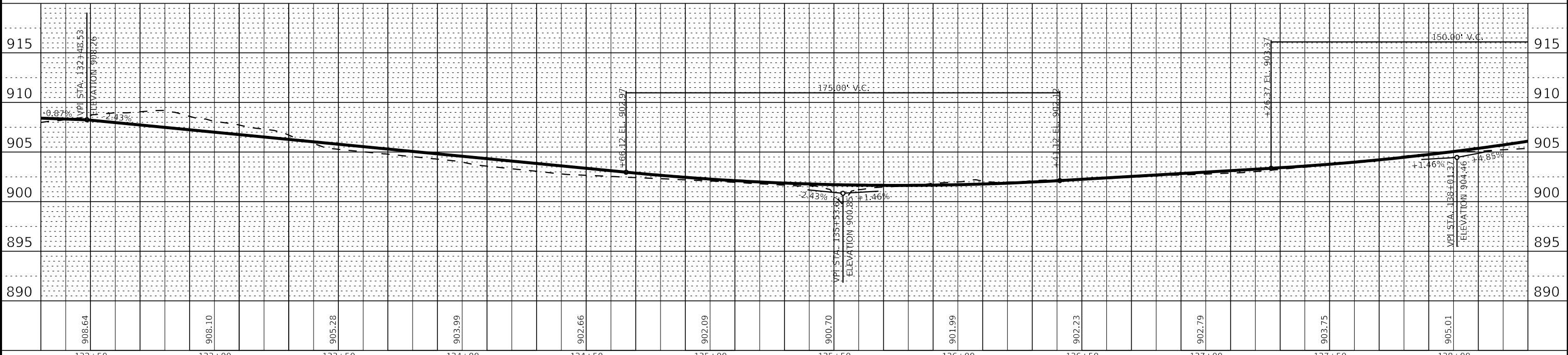
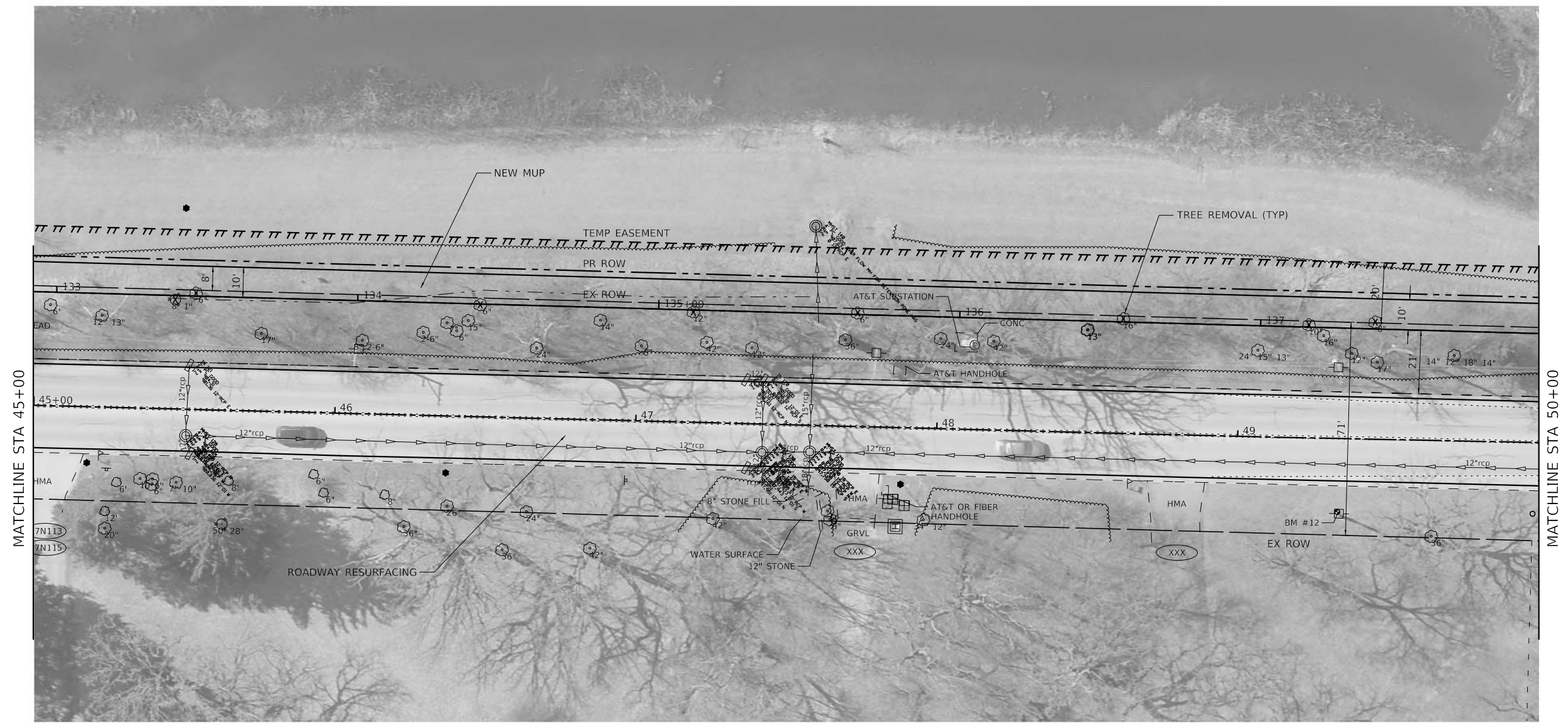
**VILLAGE OF WEST DUNDEE  
 SLEEPY HOLLOW ROAD**

**PLAN AND PROFILE**

SCALE: SHEET OF SHEETS STA. TO STA.

F.A. RTE.	SECTION	COUNTY	TOTAL SHEETS	SHEET NO.
		KANE	11	8
CONTRACT NO.				
ILLINOIS FED. AID PROJECT				

COPYRIGHT © BY BAXTER & WOODMAN, INC.  
 STATE OF ILLINOIS - PROFESSIONAL DESIGN FIRM  
 LICENSE NO. - 184-00121 - EXPIRES 4/30/  
 7/14/11  
 MODEL - Default  
 FILE NAME: I:\Crystal Lake\200921-Sleepy Hollow Trail\CAD\Sheets\200921\_sht\_PlnPrf\_SleepyHollowTrail8.dgn



132+50	133+00	133+50	134+00	134+50	135+00	135+50	136+00	136+50	137+00	137+50	138+00
908.64	908.10	905.28	903.99	902.66	902.09	900.70	901.99	902.23	902.79	903.75	905.01



USER NAME = 714jf	DESIGNED -	REVISED -
PLOT SCALE = 40,0000' / in.	DRAWN -	REVISED -
PLOT DATE = 8/20/2021	CHECKED -	REVISED -
	DATE - 05-12-21	FILE - 200921_sht_PlnPrf_SleepyHollowTrail8.dgn

VILLAGE OF WEST DUNDEE  
 SLEEPY HOLLOW ROAD

PLAN AND PROFILE

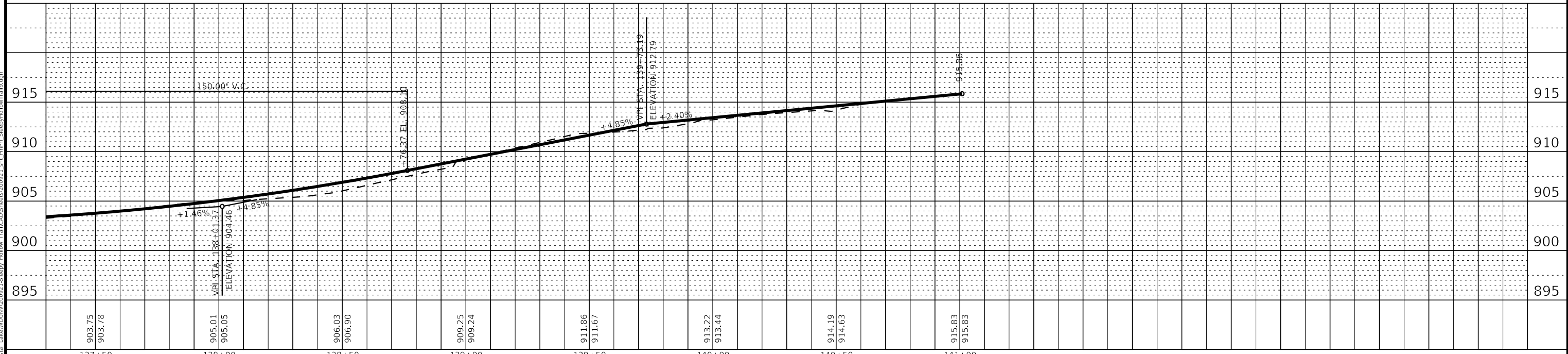
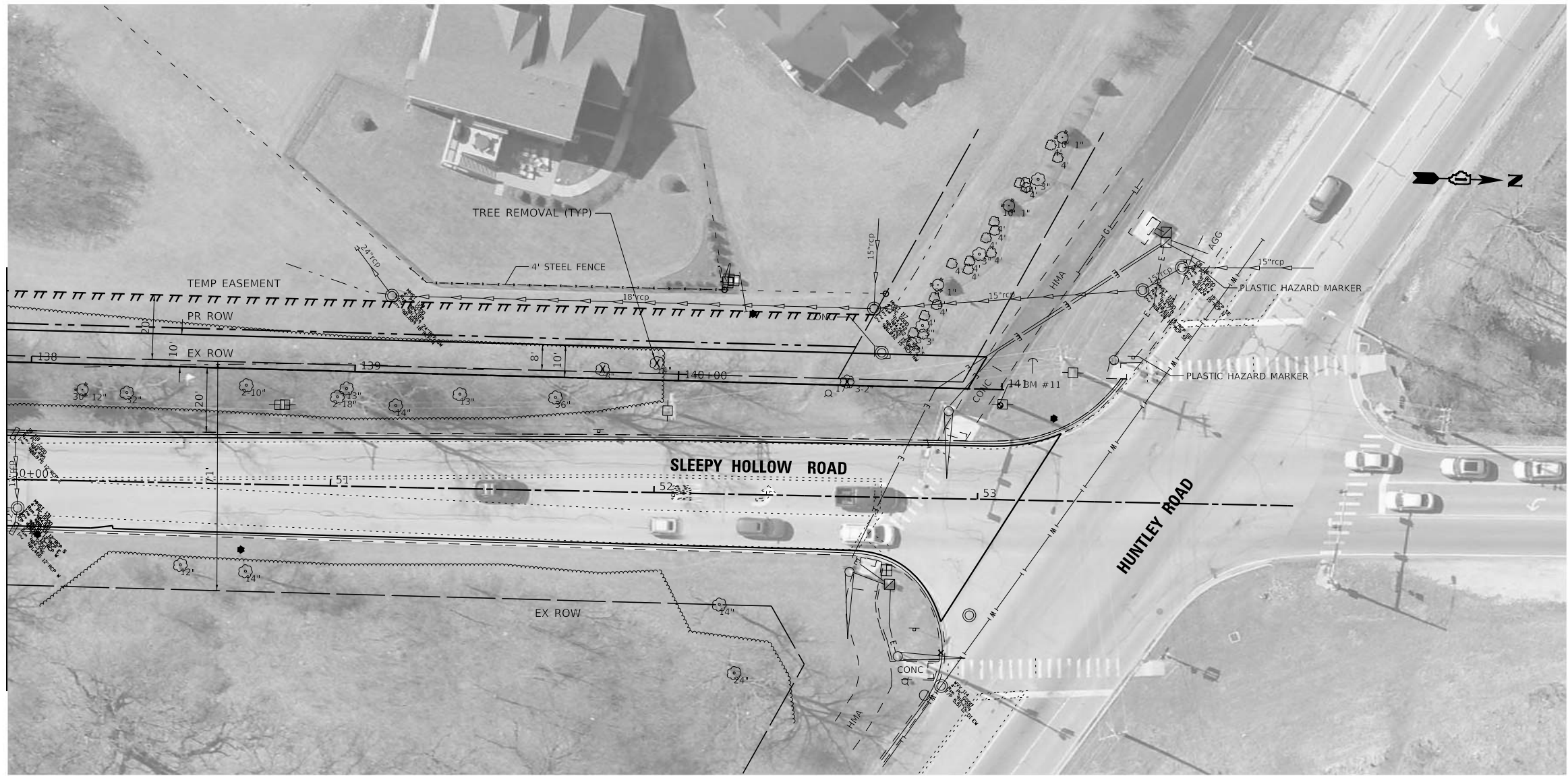
SCALE: SHEET OF SHEETS STA. TO STA.

F.A. RTE.	SECTION	COUNTY	TOTAL SHEETS	SHEET NO.
		KANE	11	9
CONTRACT NO.				
ILLINOIS FED. AID PROJECT				



COPYRIGHT © BY BAXTER & WOODMAN, INC.  
 STATE OF ILLINOIS - PROFESSIONAL DESIGN FIRM  
 LICENSE NO. - 184-001121 - EXPIRES 4/30/  
 7/14/11  
 MODEL: Default  
 FILE NAME: I:\Crystal Lake\W200921\Sleepy Hollow Trail\CAD\Sheets\200921\_sht\_PlnPrf\_SleepyHollowTrail9.dgn  
 ...:\pltdrv\pdrf\BW\_Default.plt  
 ...:\CAD\Plots\200921\_PlanSet.ctb  
 I:\Crystal Lake\W200921\Sleepy Hollow Trail\CAD\Sheets\200921\_sht\_PlnPrf\_SleepyHollowTrail9.dgn

MATCHLINE STA 50+00



STATION	ELEVATION	EXISTING ELEVATION	VERTICAL CURVE DATA
137+50	903.75	903.78	
138+00	905.01	905.05	VPI STA: 138+01.37, ELEVATION: 904.46
138+50	906.03	906.90	VPI STA: 139+53.19, ELEVATION: 912.79
139+00	909.25	909.24	VPI STA: 141+00.00, ELEVATION: 915.86
139+50	911.86	911.67	
140+00	913.22	913.44	
140+50	914.19	914.63	
141+00	915.83	915.83	



USER NAME = 714jlf	DESIGNED -	REVISED -
PLOT SCALE = 40.0000' / in.	DRAWN -	REVISED -
PLOT DATE = 8/20/2021	CHECKED -	REVISED -
	DATE - 05-12-21	FILE - 200921_sht_PlnPrf_SleepyHollowTrail9.dgn

VILLAGE OF WEST DUNDEE  
SLEEPY HOLLOW ROAD

PLAN AND PROFILE

SCALE: SHEET OF SHEETS STA. TO STA.

F.A. RTE.	SECTION	COUNTY	TOTAL SHEETS	SHEET NO.
		KANE	11	10
CONTRACT NO.				
ILLINOIS FED. AID PROJECT				