



# Kane County

## KC Agriculture Committee

### Agenda

Government Center  
719 S. Batavia Ave., Bldg. A  
Geneva, IL 60134

JUBY, Roth, Allan, Lenert, Penesis, Sanchez, Williams and ex-officio Pierog (County Chair)

---

**Thursday, August 21, 2025**

**10:30 AM**

**County Board Room**

---

#### **2025 Committee Goals**

Goals from the July Agriculture Committee meeting

- Revise County Code Definition of the Agriculture Committee
  - Awareness & Support of Agriculture - Raise public awareness and support for agriculture in Kane County as an industry sector and community resource
  - Farmland Protection - Work in concert with the Farmland Protection Commission and County Board to oversee the successful implementation of Kane County's Farmland Protection Ordinance and related conservation efforts, and pursue funding
  - Continue Growing for Kane Program - Direct the implementation of programs and policies that expand the production of locally grown foods and improve community access to fresh and healthy food choices, and pursue funding
    - Continue partnerships with Kane County Farm Bureau and Northern Illinois Food Bank
    - Implement current grant funded projects
    - Continue to apply for additional outside grants
    - Implement economic development projects for Agriculture
    - ARPA Small grants for farmers
    - Other projects identified by the Economic Development Strategic Plan for Kane County
- 

1. **Call To Order**
  2. **Roll Call**
  3. **Remote Attendance Requests**
  4. **Approval of Minutes: July 17, 2025**
  5. **Public Comment**
  6. **Partners**
    - A. Kane County Farm Bureau Updates (Steve Arnold, Manager)
    - B. Northern Illinois Food Bank Updates (Robert Desio, Senior Manager of Public Policy and Benefits)
  7. **Presentations/Announcements**
    - A. Amendments to Agricultural Conservation Easements (Sarahy Castro, Farmland Preservation Administrator)
-

- B. Growing for Kane Program Updates (Matt Tansley, Planner)

**8. New Business**

- A. **Resolution:** Approving an Amendment to the Deed of Agricultural Conservation Easement for the Evans Farm through the Kane County Farmland Protection Program
- B. **Resolution:** Approving an Amendment to the Deed of Agricultural Conservation Easement for the Peterson Farm through the Kane County Farmland Protection Program

**9. Executive Session (if needed)**

**10. Reports Placed On File**

**11. Adjournment**

STATE OF ILLINOIS )

SS.

COUNTY OF KANE )

**PRESENTATION/DISCUSSION NO. TMP-25-1008**

## KANE COUNTY FARM BUREAU UPDATES (STEVE ARNOLD, MANAGER)

STATE OF ILLINOIS )

SS.

COUNTY OF KANE )

**PRESENTATION/DISCUSSION NO. TMP-25-1009**

**NORTHERN ILLINOIS FOOD BANK UPDATES (ROBERT DESIO, SENIOR  
MANAGER OF PUBLIC POLICY AND BENEFITS)**

STATE OF ILLINOIS )

SS.

COUNTY OF KANE )

**PRESENTATION/DISCUSSION NO. TMP-25-1010**

## AMENDMENTS TO AGRICULTURAL CONSERVATION EASEMENTS (SARAHY CASTRO, FARMLAND PRESERVATION ADMINISTRATOR)

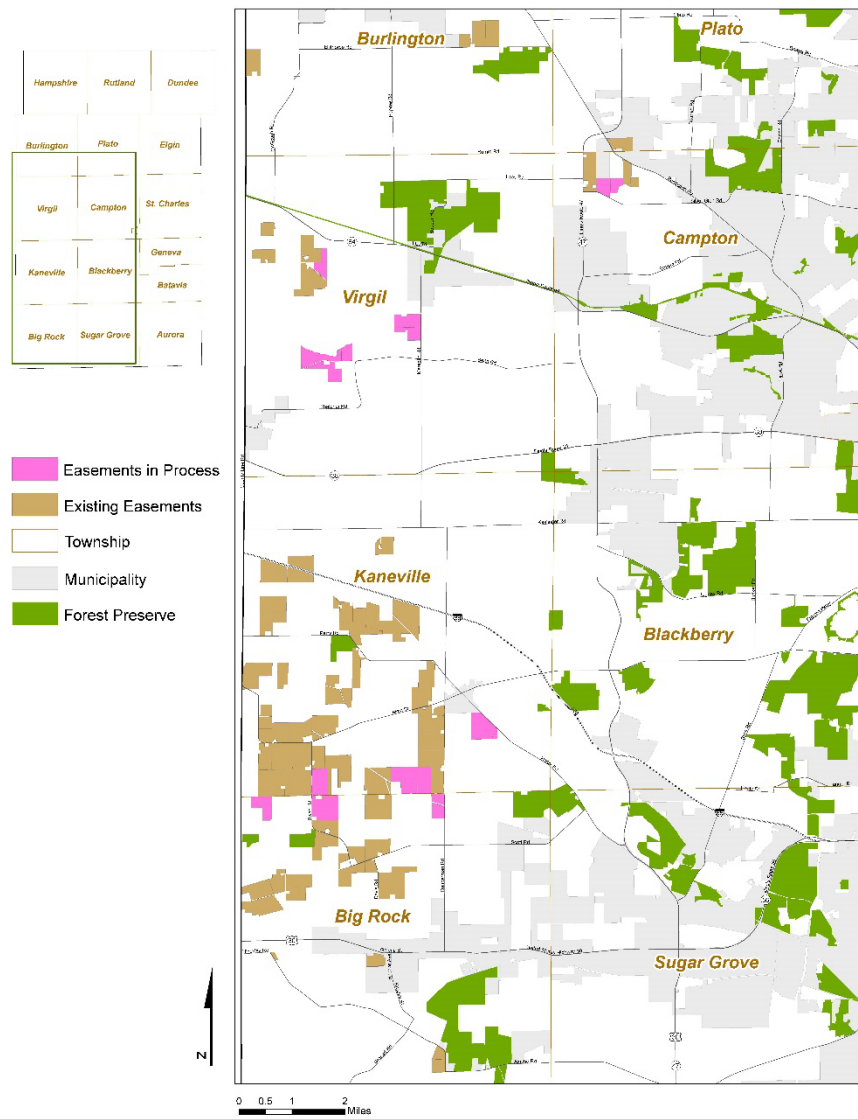
# Kane County Agriculture Committee

August 21, 2025

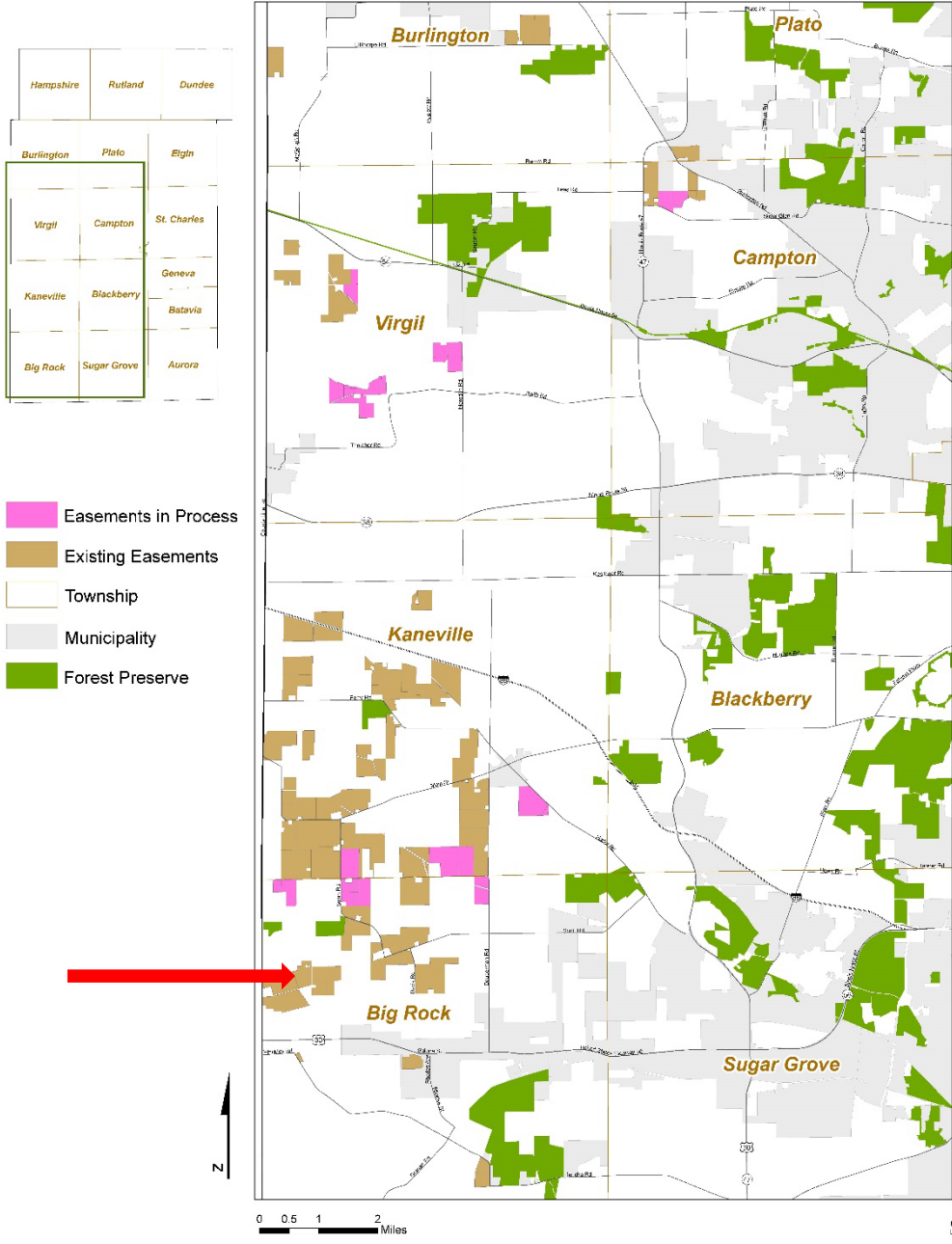


# Agenda

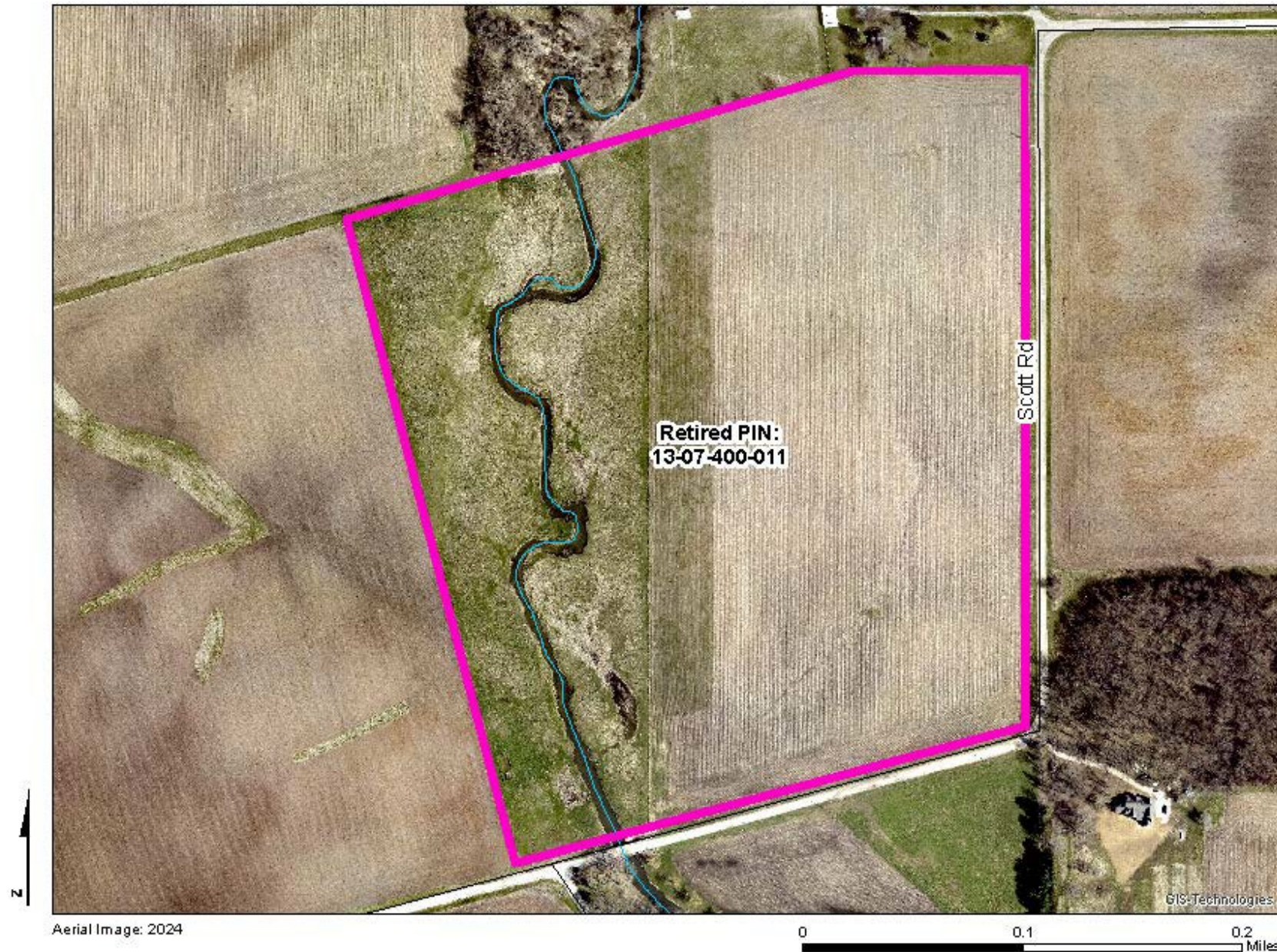
- Evans Farm – Big Rock Township – (amendment of agriculture easement)
- Peterson Farm – Virgil Township – (amendment of agriculture easement)



2025 Kane County Farmland Protection Program



# Evans Farm



# Evans Farm



# Recommendation

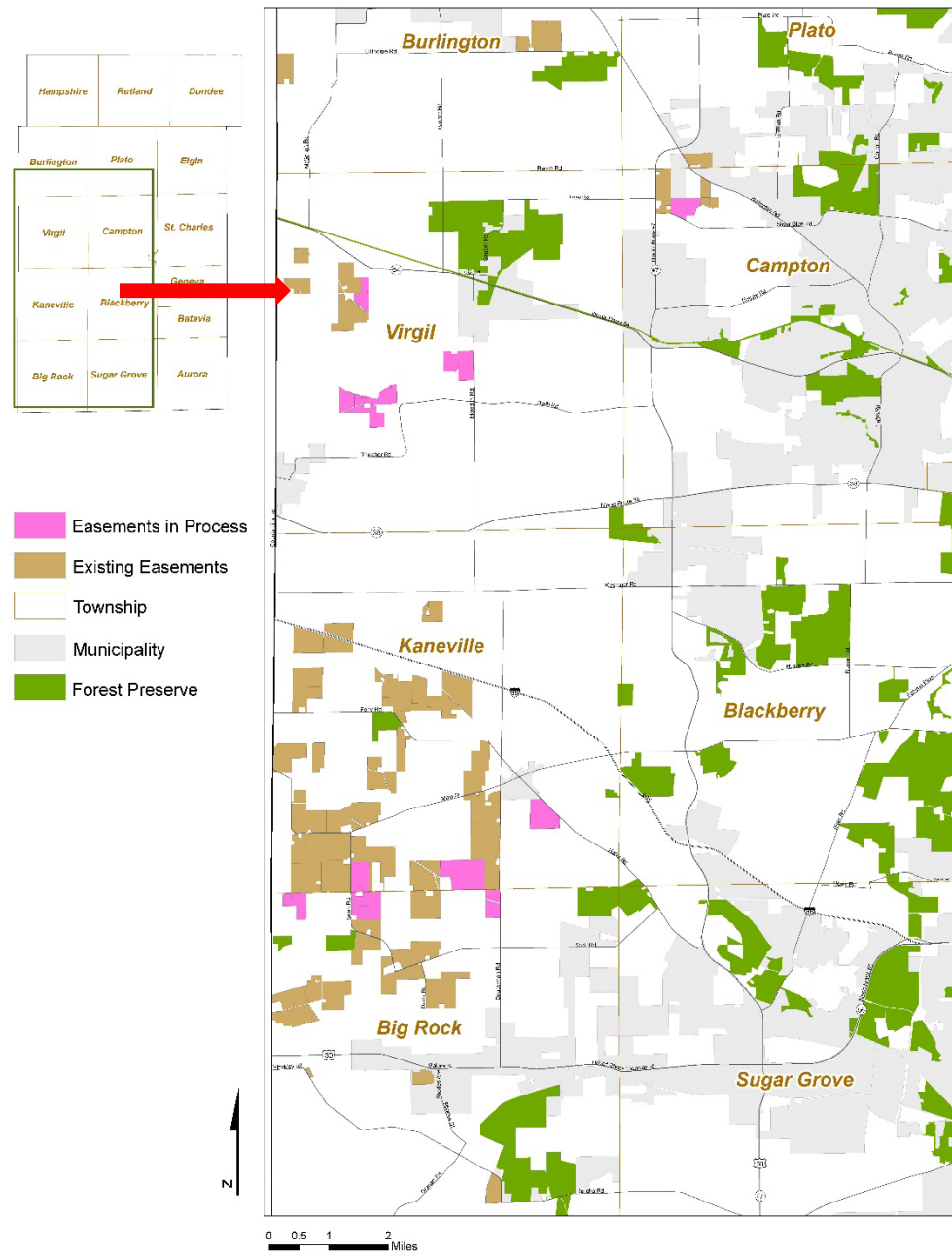
## Title

- Approving an amendment to the Deed of Agricultural Conservation Easement for the Evans Farm through the Kane County Farmland Protection Program.

## Summary

- This resolution authorizes the County Board to approve an amendment to the Deed of Agricultural Conservation Easement for the Evans Farm, permitting subdivision in accordance with the Statement of Purpose and the requirements of Ordinance 01-67.

# 2025 Kane County Farmland Protection Program



# R. Peterson Easement Property

PINs: 07-07-300-009, 07-07-400-003



 R. Peterson Easement

 Right of Way

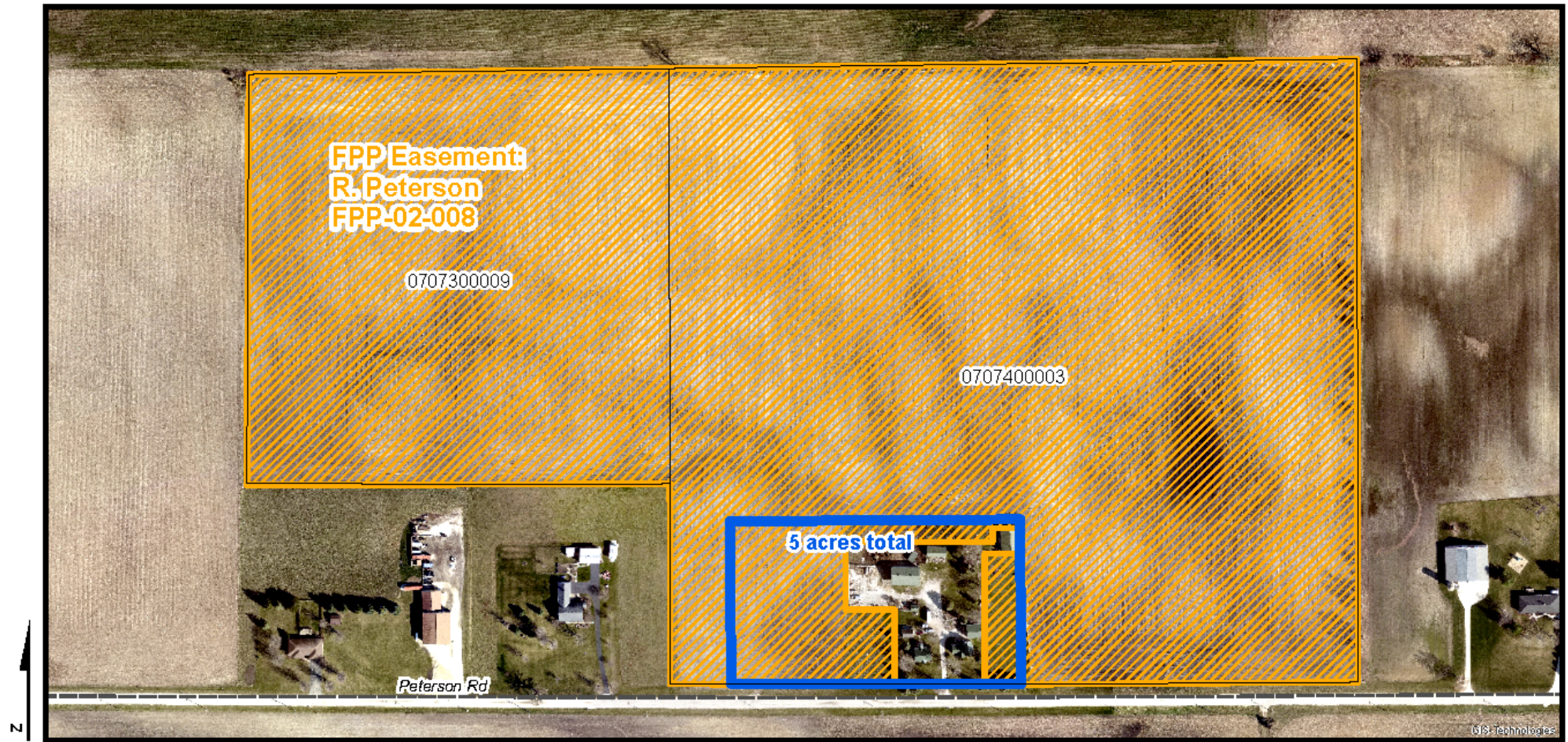
 Peterson Parcels

These layers do not represent a survey. No accuracy is assumed for the data delineated herein, either expressed or implied by Kane County or its employees. These layers are compiled from official records, including plats, surveys, recorded deeds, and contracts, and only contains information required for local government purposes. See the recorded documents for more detailed legal information.

Kane County  
Development  
COM - 7/25

# R. Peterson Easement Property

PINs: 07-07-300-009, 07-07-400-003



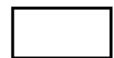
R. Peterson Easement



Proposed New 5 Acre Parcel



Right of Way



Peterson Parcels

These layers do not represent a survey. No accuracy is assumed for the data delineated herein, either expressed or implied by Kane County or its employees. These layers are compiled from official records, including plats, surveys, recorded deeds, and contracts, and only contains information required for local government purposes. See the recorded documents for more detailed legal information.

Kane County  
Development  
COM - 7/25

# Recommendation

## Title

- Approving an amendment to the Deed of Agricultural Conservation Easement for the Peterson Farm through the Kane County Farmland Protection Program.

## Summary

- This resolution authorizes the County Board to approve an amendment to the Deed of Agricultural Conservation Easement for the Peterson Farm, permitting subdivision in accordance with the Statement of Purpose and the requirements of Ordinance 01-67, subject to approval by the Zoning Board of Appeals for the proposed F1 Rural Residential zoning.

# Thank you!



STATE OF ILLINOIS )  
COUNTY OF KANE ) SS.

**PRESENTATION/DISCUSSION NO. TMP-25-1022**

**GROWING FOR KANE PROGRAM UPDATES (MATT TANSLEY, PLANNER)**



Soil Health Impact Assessment



Drone Seeding Field Day & Cover  
Crop Workshop

# Growing for Kane Updates

**Kane County Agriculture Committee**  
**August 21, 2025**  
**Matt Tansley, Planner**



## Soil Health Impact Assessment

### July 9 Kickoff Meeting

- Project team gathered to review workplan & schedule
- Determine primary analysis group: commodity crop producers
- Assign project responsibilities for NVA, Delta and Kane Co.
- Preview outreach activities for farmer engagement





## Soil Health Impact Assessment – Project Schedule

Project Activities	JUL	SEP	NOV	JAN	MAR
Kickoff Meeting					
Research & Data Gathering Strategy					
Secondary Research & Soil Data Gathering					
Business Analysis / Modeling					
Business Case Narrative					



## Drone Field Day – Flight Demonstration

- An alternative to airplane and helicopter seeding / spraying
- AgFly drones carry maximum of 50 to 100 lbs
- Route programable with autonomous setting
- Battery powered w/ 3,000 ft. signal range
- Drone seeding can occur before harvesting
- Multiple licensing requirements





## Drone Field Day – Cover Cropping Workshop

- U of I Extension is testing cover crops for weed management at St. Charles Horticulture Research Center
- Midwest Cover Crop Council – online tool for cover crop planning
- Farmer discussion of cover cropping – impacts on yields



**Illinois Extension**  
UNIVERSITY OF ILLINOIS URBANA-CHAMPAIGN



**Kane-DuPage  
Soil & Water  
Conservation  
District**

# Food & Farm Resiliency Grant Recipients Featured in Kane County Connects (More to come)

- [Wiltse's Farm](#)
- [Elder Oaks Farm](#) (formerly Fulbuschel Farm)
- [Garlic Breath Farm](#)
- [Charity Blooms](#)
- [Blacksmith Acres](#)
- [Ream's Country Bees](#)





Passed by the Kane County Board on September 9, 2025.

---

John A. Cunningham, MBA, JD, JD  
Clerk, County Board  
Kane County, Illinois

---

Corinne M. Pierog MA, MBA  
Chairman, County Board  
Kane County, Illinois

Vote:



## RESOLUTION / ORDINANCE EXECUTIVE SUMMARY ADDENDUM

### **Title**

Approving an Amendment to the Deed of Agricultural Conservation Easement for the Evans Farm Through the Kane County Farmland Protection Program

### **Committee Flow:**

Agriculture Committee, Executive Committee, County Board

### **Contact:**

Sarahy Castro, Farmland Preservation Administrator, 630-232-3483

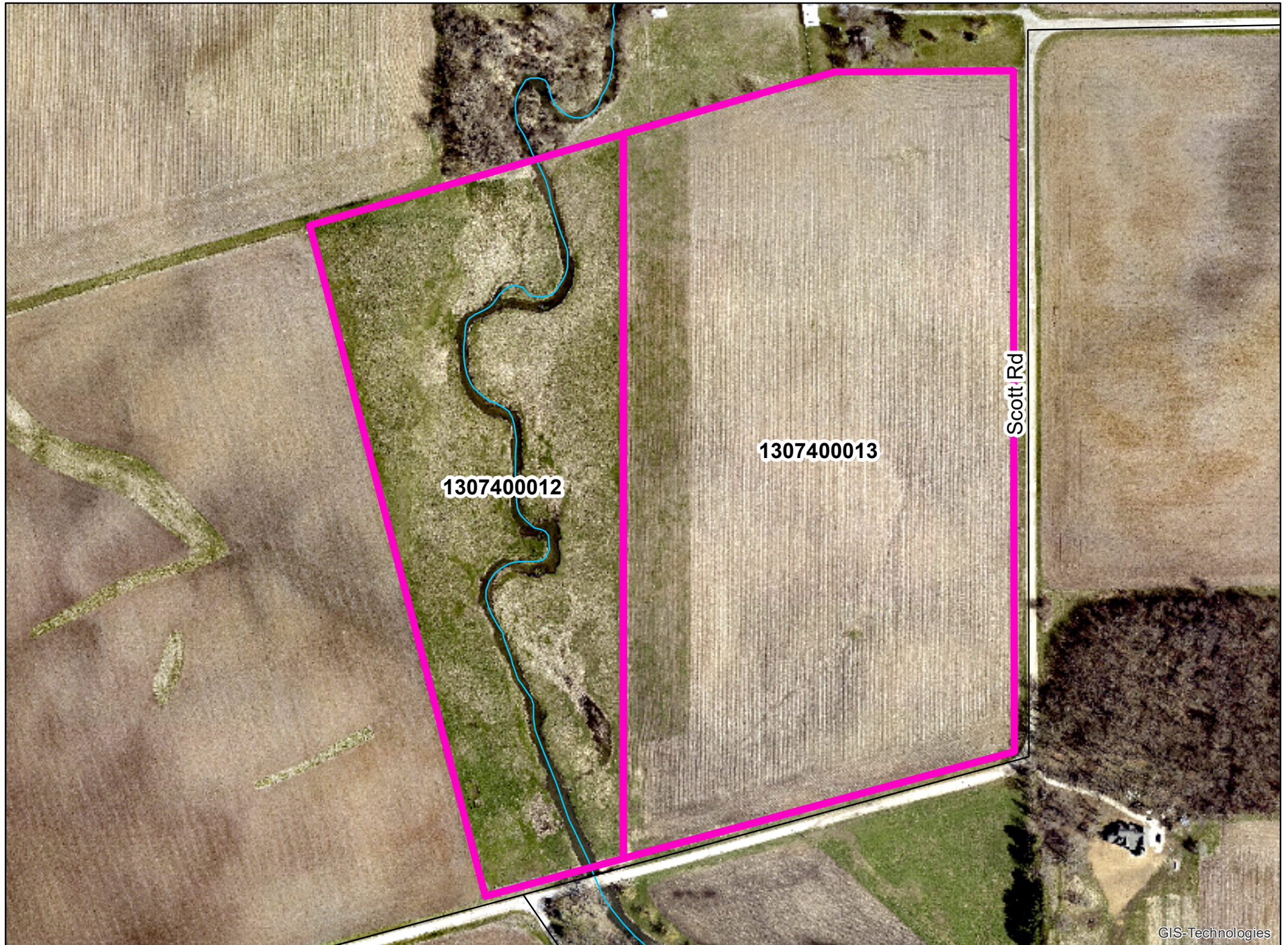
### **Budget Information:**

Was this item budgeted? N/A	Appropriation Amount: \$N/A
If not budgeted, explain funding source: N/A	
Was this item passed through the appropriate committee? Yes.	

### **Summary:**

This resolution authorizes the County Board to approve an amendment to the Deed of Agricultural Conservation Easement for the Evans Farm, permitting subdivision per Exhibit A, in accordance with the Statement of Purpose and the requirements of Ordinance 01-67.

# Evans Farm Exhibit A



Aerial Image: 2024

0 0.1 0.2 Miles



NOW, THEREFORE, BE IT RESOLVED by the Kane County Board that the Deed of Agricultural Conservation Easement for the Peterson Farm is hereby approved for amendment to allow subdivision per Exhibit B, consistent with the Statement of Purpose and the requirements of Ordinance 01-67, subject to approval by the Zoning Board of Appeals for the proposed F1 Rural Residential zoning.

Passed by the Kane County Board on September 9, 2025.

---

John A. Cunningham, MBA, JD, JD  
Clerk, County Board  
Kane County, Illinois

---

Corinne M. Pierog MA, MBA  
Chairman, County Board  
Kane County, Illinois

Vote:



## RESOLUTION / ORDINANCE EXECUTIVE SUMMARY ADDENDUM

### **Title**

Approving an Amendment to the Deed of Agricultural Conservation Easement for the Peterson Farm Through the Kane County Farmland Protection Program

### **Committee Flow:**

Agriculture Committee, Executive Committee, County Board

### **Contact:**

Sarahy Castro, Farmland Preservation Administrator, 630-232-3483

### **Budget Information:**

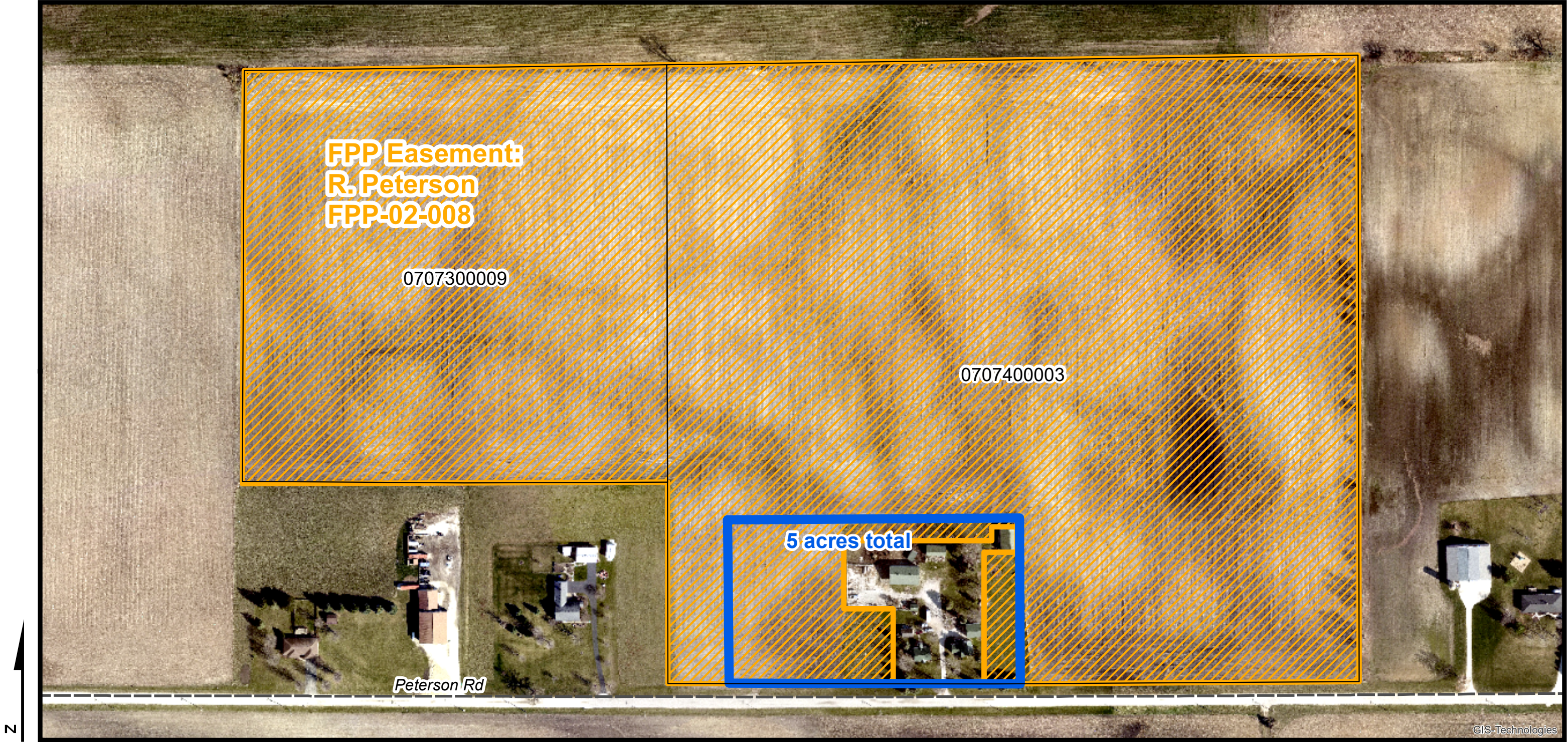
Was this item budgeted? N/A	Appropriation Amount: \$N/A
If not budgeted, explain funding source: N/A	
Was this item passed through the appropriate committee? Yes.	

### **Summary:**

This resolution authorizes the County Board to approve an amendment to the Deed of Agricultural Conservation Easement for the Peterson Farm, permitting subdivision per Exhibit B, in accordance with the Statement of Purpose and the requirements of Ordinance 01-67, subject to approval by the Zoning Board of Appeals for the proposed F1 Rural Residential zoning.





# R. Peterson Easement Property Exhibit B

PINs: 07-07-300-009, 07-07-400-003



Aerial Image: 2024

0 245 490 980 Feet

-  R. Peterson Easement
-  Proposed New 5 Acre Parcel
-  Right of Way
-  Peterson Parcels

These layers do not represent a survey. No accuracy is assumed for the data delineated herein, either expressed or implied by Kane County or its employees. These layers are compiled from official records, including plats, surveys, recorded deeds, and contracts, and only contains information required for local government purposes. See the recorded documents for more detailed legal information.

Kane County  
Development  
COM - 7/25